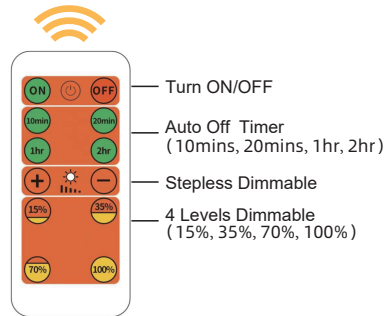


INSTRUCTION

Packing List

1X Lamp 1X Power Adapter 1X Support Plate
1X Tape 3X Expansion Screws
3X Steel Screws 1X Remote Control



Code matching before first usage:

- 1、 Remove the insulation sheet from remote control, then keep pressing OFF button and not release
- 2、 Plug power adapter into power socket, wait for 5~10 seconds, the lamp will flash once. The code matching is successful.

Remind:

If the code matching is failed, please don't worry, press the touch switch to turn on lamp and remove the power adapter from power socket. It can initialize the lamp, then begin new code matching process.

EN

Wall Light Remote Control

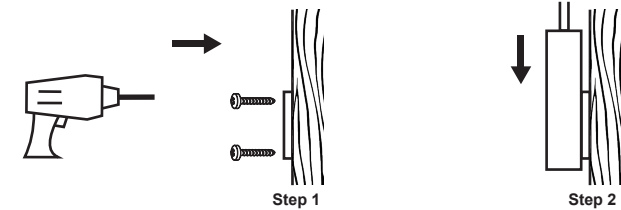
SKU	RS-W32	Control Mode	Remote Control
Material	Plastic ABS	Dimension	50.4 X 6 X 3 CM
Lighting Source	COB LED	Input Voltage	AC100-240V 50/60HZ
USB Output	DC5V Max.2A	Power	Max.5W
Lighting Brightness	Max.500Lm	Lighting Color	4000K
CRI	CRI>80	Waterproof Rate	IP20

FCC warning:

Any Changes or modifications not expressly approved by the party responsible for compliance could void the user's authority to operate the equipment.

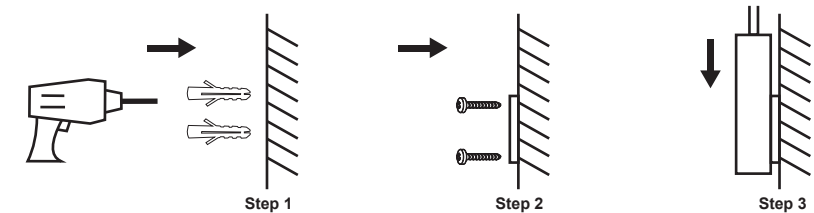
Installation Methods

Installation method 1



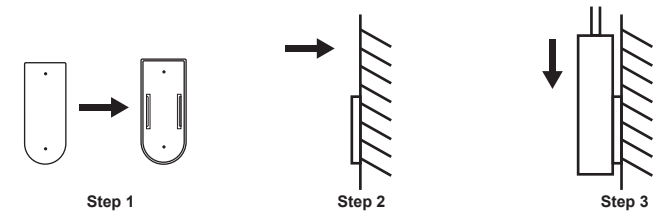
Fix the support plate on the wooden surface with steel screws, and then slide the lamp base onto the support plate.

Installation method 2



Fix the expansion screws on the wall, then fix the support plate on the wall with the steel screws, and then slide the lamp base onto the support plate.

Installation method 3



Use tape to stick the support plate on the required surface, and then slide the lamp base onto the support plate.

PRINCEWAY®

✉ service@princewaylighting.com

🌐 www.princewaylighting.com

Made in China



This device complies with part 15 of the FCC Rules. Operation is subject to the following two conditions: (1) This device may not cause harmful interference, and (2) this device must accept any interference received, including interference that may cause undesired operation.

FCC warning:

Any Changes or modifications not expressly approved by the party responsible for compliance could void the user's authority to operate the equipment.

Note: This equipment has been tested and found to comply with the limits for a Class B digital device, pursuant to part 15 of the FCC Rules. These limits are designed to provide reasonable protection against harmful interference in a residential installation. This equipment generates uses and can radiate radio frequency energy and, if not installed and used in accordance with the instructions, may cause harmful interference to radio communications. However, there is no guarantee that interference will not occur in a particular installation. If this equipment does cause harmful interference to radio or television reception, which can be determined by turning the equipment off and on, the user is encouraged to try to correct the interference by one or more of the following measures:

- Reorient or relocate the receiving antenna.
- Increase the separation between the equipment and receiver.
- Connect the equipment into an outlet on a circuit different from that to which the receiver is connected.
- Consult the dealer or an experienced radio/TV technician for help.

The device has been evaluated to meet general RF exposure requirement. The device can be used in portable exposure condition without restriction.