
 Foxtheon Energy

 Foxtheon Energy

 Foxtheon

 Foxtheon

 foxtheonenergy

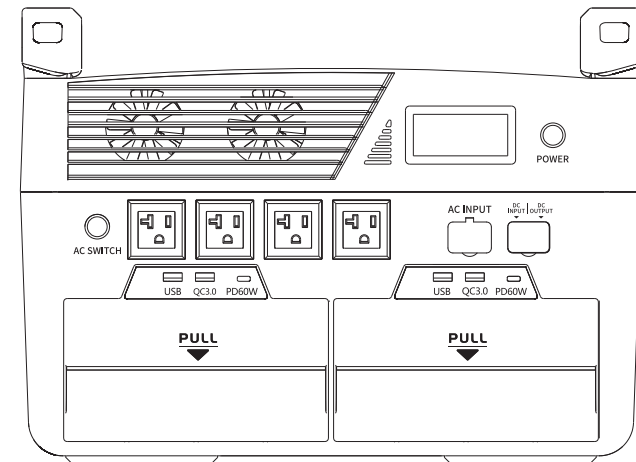
FCC Statement Changes or modifications not expressly approved by the party responsible for compliance could void the user's authority to operate the equipment. This equipment has been tested and found to comply with the limits for a Class B digital device, pursuant to Part 15 of the FCC Rules. These limits are designed to provide reasonable protection against harmful interference in a residential installation. This equipment generates uses and can radiate radio frequency energy and, if not installed and used in accordance with the instructions, may cause harmful interference to radio communications. However, there is no guarantee that interference will not occur in a particular installation. If this equipment does cause harmful interference to radio or television reception, which can be determined by turning the equipment off and on, the user is encouraged to try to correct the interference by one or more of the following measures:-- Reorient or relocate the receiving antenna.-- Increase the separation between the equipment and receiver.-- Connect the equipment into an outlet on a circuit different from that to which the receiver is connected.-- Consult the dealer or an experienced radio/TV technician for help This device complies with part 15 of the FCC rules. Operation is subject to the following two conditions (1) this device may not cause harmful interference, and (2) this device must accept any interference received, including interference that may cause undesired operation.

This equipment complies with FCC radiation exposure limits set forth for an uncontrolled environment. This equipment should be installed and operated with minimum distance 20cm between the radiator & your body."

Foxtheon iGo3600

Portable Power Station

User Manual-V1.0



Foxtheon

Disclaimer

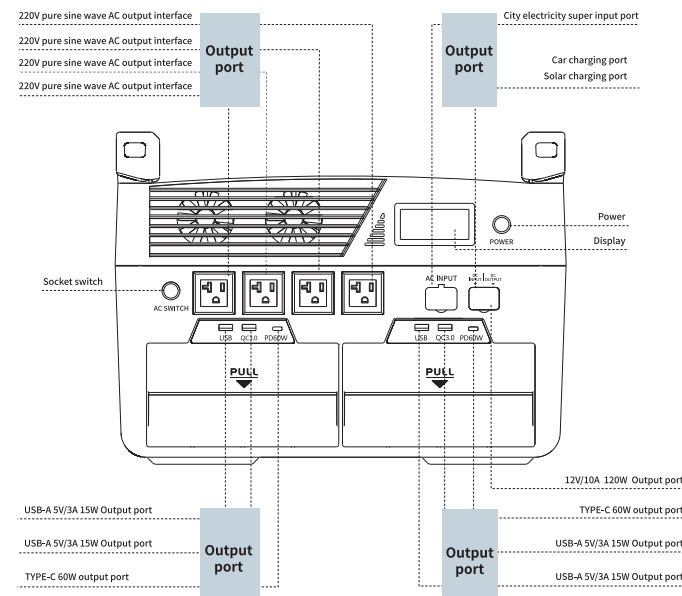
Read all safety tips, warning messages, terms of use, and disclaimers carefully. Refer to the terms of use and disclaimer in User Manual and stickers on the product before use. Users take full responsibility for all usage and operations. Familiarize yourself with the related regulations in your area. You are solely responsible for being aware of all relevant regulations and using Foxtheon products in a compliant way.

Introduction

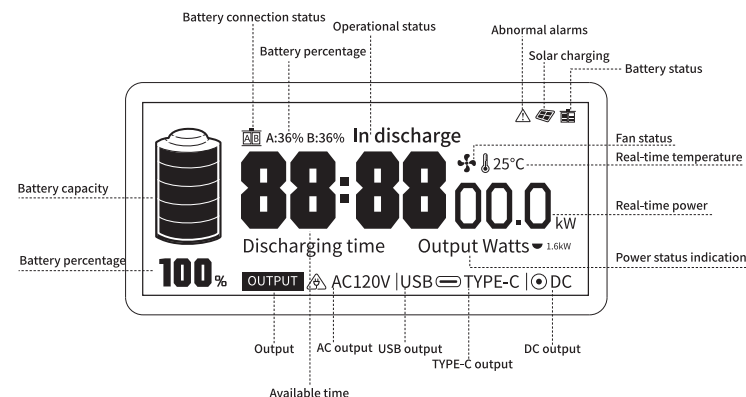
This product is a portable energy storage power station for home and outdoors, with large capacity, small size, lightweight, high safety, and large output power. It can be quickly split into two small portable power sources for separate use, and the two modules can rotate work to keep the load never powered off. Its multiple outlets can accommodate a variety of small household appliances, and its multiple charging methods can be used. This makes it an essential product for indoor and outdoor use.

Getting Started

1. Product Details



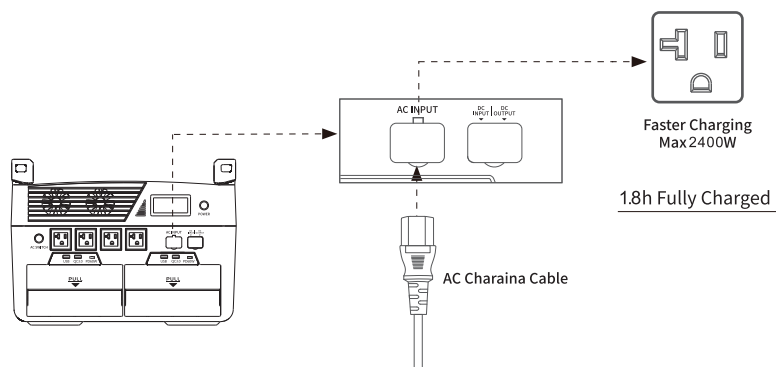
2. LCD Screen



How to Charge

1. 220V AC Input

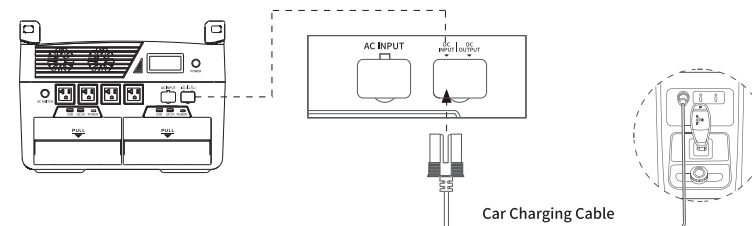
Use the provided AC charging cable to connect the mains and energy storage AC input terminals, and the power station will be charged automatically. When the power station is full, the LCD screen displays 100% power. When fully charged, disconnect the charging cable.



*20A socket is recommended for AC charging

2. Car Charging

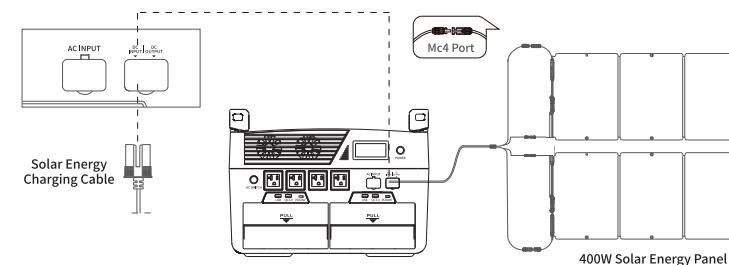
Use the provided DC charging cable to connect the vehicle output outlet and the power station EC5 input terminal, and the power station will be charged automatically. When the power station is fully charged, the LCD screen displays 100% power. When fully charged, disconnect the charging cable.



*The product can be charged by using the car charging interface on the car. The product supports 12V/24V car charging and the default charging current is 8A. It is recommended that the car should be charged in the starting state to avoid car battery loss and failure to start.

3. Solar Energy Charging

The solar energy transfer cable is used to connect the solar energy outlet and the power station EC5 input terminal. The power station will be charged automatically. When the power station is fully charged, the LCD screen displays 100% power. When fully charged, disconnect the charging cable.



*Before connecting the solar panel, ensure that the output voltage of the solar panel is within 12V-40V to avoid damage to the product.

How to Use

1. Turn on

Press the power switch to turn on the device. After the device is turned on, the screen enters the waiting interface. After 6 seconds, the screen enters the display status interface and the power switch indicator stays on.

2. Hibernation

The default hibernation time of the product is 15 minutes. If no operation is performed on the product for 15 minutes, the product enters the hibernation state and the shutdown screen is displayed.

3. Power off

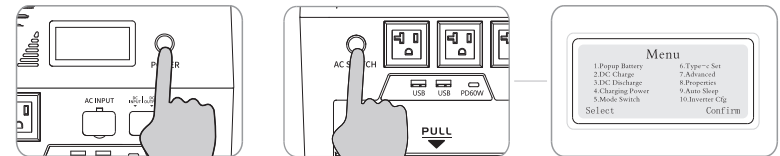
Press and hold the power switch for 2S, and the screen will display the usage of the power station, and then enter the shutdown interface.

4. Function setting interface

4.1 Press the power switch to start the power station;

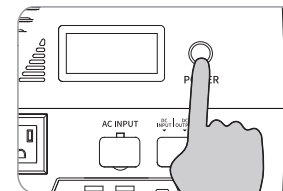
4.2 In the power startup interface, click the AC switch four times (must be in the startup interface state). After entering the startup interface,

Continuous click the power switch two times to enter the "Menu" interface;

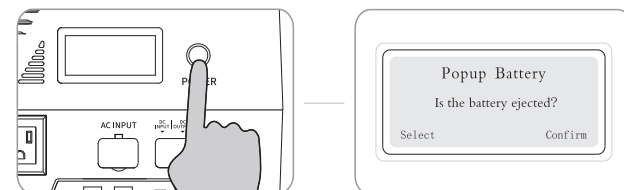


5. Instructions for battery pack's insertion, removal, and installation

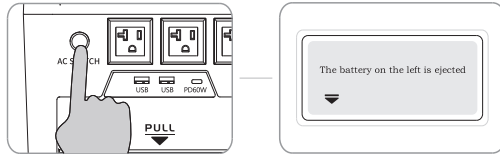
5. 1 Press the power switch to start the power station;



5. 2 In the power startup interface, continuous click the power switch two times to enter the "Popup Battery" interface;

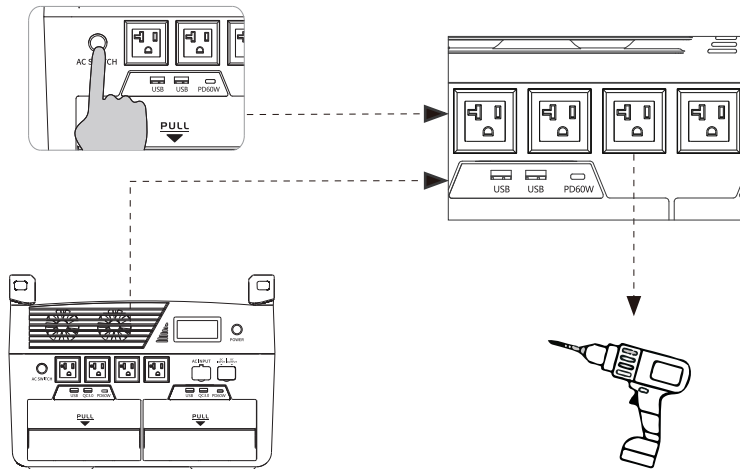


5. 3 Press the AC switch to eject the battery.



6. 220V AC Output

Under the startup state, press the AC switch and insert the electrical equipment when the key indicator lights up.



7. Vehicle Output

When the device is powered on, it can be directly inserted into the electrical equipment.

8. Type-C / USB Output

When the device is powered on, it can be directly inserted into the

electrical equipment.

9. Turn on and off the UPS

Turn on the Power and AC switch, hold down the AC switch for 5 seconds to enable the UPS function and the UPS icon is displayed. Hold down the AC switch for 5S or the Power switch for 2S to turn off the UPS. The UPS is shut down by default after it is powered on again.

FAQS

1. What type of battery is used in this product?

This product uses a high-quality solid lithium-ion battery.

2. What devices can be equipped at the AC output port of this product?

The AC output port of this product has a rated power of 3200W and a peak power of 3800W. It can power most consumer electronic products. However, it is recommended that you confirm the power of the electrical appliances before use, and ensure that the total power of all load devices is less than the rated power.

3. How do I know how long the product's power lasts?

The display screen displays the battery lifetime, which can be used to estimate the charging time required for general devices with stable power usage.

4. How do I know that the product is charging?

When charging, the display screen will show the remaining charging

time, and the power indicator circle outside the battery capacity percentage will rotate cyclically and indicate the input power.

5. How do I clean this product?

Wipe this product with a dry, soft, and clean cloth or tissue.

6. How do I store the product?

When storing this product, please turn the product off and then store it in a dry and ventilated place at room temperature. Do not store this product near water. When this product is stored for a long period, it is recommended that the battery be discharged to 30% and then charged to 80% every three months to extend the service life of this product.

7. Can this product be brought on board a plane?

No.

8. Is the actual output capacity consistent with the capacity indicated in the user manual?

The capacity marked in the user manual is the rated capacity of the battery pack. The actual output capacity of the product is lower than the capacity specified in the user manual because there is a certain efficiency loss during the charging and discharging process.

Safety Instructions

1. It is strictly prohibited to place this product near heat sources, such as

fire or heating furnaces.

2. It is strictly prohibited for this product to come into contact with any liquid. Do not immerse this product in water or allow it to get wet. Do not use this product in the rain, damp conditions, or wet environments.

3. Using this product in strong static or strong magnetic field environments is prohibited.

4. It is prohibited to disassemble this product in any way or puncture this product with sharp objects.

5. It is prohibited to use wires or other metal objects to cause this product to short-circuit.

6. Do not use unofficial components or accessories. If replacements are necessary, please visit Foxtheon's official sales channel for the relevant purchase information.

7. When using this product, please strictly follow the ambient temperature for use in this user manual. Overly high temperatures may cause the battery to catch fire or even explode; while overly low temperatures will seriously degrade product performance to the point that it can no longer meet normal use requirements.

8. It is prohibited to stack heavy objects on this product.

9. It is prohibited to block the fan during use, or keep the product in unventilated or dusty spaces.

10. Please avoid impacts, falling, dropping, or strong vibrations. In the case of severe external impact, please turn off the power immediately and stop using the product. Please keep the product properly secured during transport to avoid vibration and impact.

11. If the product accidentally falls into the water during use, place it in a safe open area, and keep away from the product until it has completely dried. Once dried, the product should not be re-used, and should be properly disposed of according to the method described in Section 2.2 "Disposal." If the product catches fire, please use a fire extinguisher or fire-fighting equipment in the following recommended order: water or mist, sand, fire blanket, dry powder, and carbon dioxide fire extinguisher.

12. If the interface of this product becomes dirty, wipe it off with a dry cloth.

13. Handle this product with care to prevent it from being damaged due to overturning. If the product is overturned and seriously damaged, immediately turn off the power and place the battery in an open area, being sure to keep it away from combustible materials and people; and

dispose of it following the requirements of local laws and regulations.

14. Keep this product out of reach of children and pets.

15. When conditions permit, be sure to fully discharge the battery of this product before placing the product in a designated battery recycling box. This product contains a battery, which is a hazardous chemical and is strictly prohibited from being placed in an ordinary garbage can. For relevant details, please comply with the local laws and regulations regarding battery recycling and disposal.

16. If the battery cannot be fully discharged due to the fault of the product itself, do not dispose of the battery in a battery recycling box directly. Contact a specialized battery recycling company for further disposal.

17. An over-discharged battery cannot be started. Please dispose of it as waste.

Specifications

General Info

Net Weight	Approximately 23.4kg
Dimensions	449x240x331mm
Capacity	3600Wh 57.6V

Output Ports	
AC (x4)	Pure sine wave, 100V-120V (60Hz) , max 2500W, surge 2800W
DC	13.6V=16A±1A, max200W
USB (x4)	5V=3A,15W*2;QC3.0*2,5V=3A 9V=2A 12V=1.5A 18W
Type-C (x2)	5V=3A 9V=3A 12V=3A 15V=3A 20V=3A, max60W

Input Ports	
AC Input	AC100V-120V (60Hz) , max2400W
DC Input	DC12V, max100W; DC24V, max200W
Solar Charging Input	12V-40V, max 400W

Battery Info	
Cell Chemistry	Solid lithium-ion battery
Cycle Life	The remaining capacity is still above 80% after 1500 cycles
Protection Type	High-temperature protection,

	low-temperature protection, over-discharge protection, over-charge protection, overload protection, short-circuit protection, and over-current protection
--	---

Environmental Operating Temperature	
Optimal Operating Temperature	20°C to 30°C
Discharge Temperature	-20°C to 60°C
Charge Temperature	-20°C to 60°C
Storage Temperature	-20°C to 45°C

Storage & Maintenance

1. Ideally, use and store the product between 20°C(68°F) to 30°C(86°F), and always keep it away from water, intense heat, and sharp objects. Do not store in temperatures above 45°C(113°F) or below -10°C (14°F) for an extended period.
2. Storing a battery with a low charge for a long period shortens its lifespan. iGo 3600 mitigates the damage by putting the battery into hibernation mode. To get the most out of the battery, make sure it is about 80% before putting the iGo 3600 into long-term storage, and then

once every three months, discharge the battery to 30% and recharge it back to 80%.

Abnormal indication and handling

code	specification	Recovery methods
E001	Battery A overcharge protection	Pause charging and wait for automatic recovery
E002	Battery A over-discharge protection	Pause the discharge and plug in the charging plug-in time to charge
E003	Battery A overcurrent protection	Pause the discharge and wait for automatic recovery
E004	Battery A overcurrent protection	Pause charging and wait for automatic recovery
E005	Battery A discharge overtemperature protection	Pause the discharge and wait for automatic recovery
E006	Battery A charging over temperature protection	Pause charging and wait for automatic recovery

E007	Battery A SOC protection	Pause the discharge and wait for automatic recovery
E008	Battery B overcharge protection	Pause charging and wait for automatic recovery
E009	Battery B over-discharge protection	Pause the discharge and plug in the charging plug-in time to charge
E010	Battery B overcurrent protection	Pause the discharge and wait for automatic recovery
E011	Battery B overcurrent protection	Pause charging and wait for automatic recovery
E012	Battery B discharge overtemperature protection	Pause the discharge and wait for automatic recovery
E013	Battery B charging overtemperature protection	Pause charging and wait for automatic recovery
E014	Battery B SOC protection	Pause the discharge and wait for automatic recovery
E015	Inverter input short circuit protection	Pause use, remove the load and charging plug, and restart the

		machine; If the fault cannot be removed, contact the manufacturer' s after-sales service;
E016	Inverter input overload protection	Pause the use and wait for automatic recovery to reduce the power
E017	Inverter input Undervoltage protection	Pause the use and plug in the charging plug-in time to charge
E018	Inverter input overvoltage protection	Pause for automatic recovery
E019	Inverter input overtemperature protection	Pause for automatic recovery
E020	LV hardware failure	Pause use, remove the load and charging plug, and restart the machine; If the fault cannot be removed, contact the manufacturer' s after-sales service;
E021	HC hardware failure	Pause use, remove the load and charging plug, and restart the

		machine; If the fault cannot be removed, contact the manufacturer' s after-sales service;
E022	Abnormal communication of inverter	Pause use, remove the load and charging plug, and restart the machine; If the fault cannot be removed, contact the manufacturer' s after-sales service;
E023	Inverter output overcurrent protection	Pause the use and wait for automatic recovery to reduce the power
E024	Inverter output short circuit protection	Pause for automatic recovery
E025	Inverter output under-voltage protection	Pause use, remove the load and charging plug, and restart the machine; If the fault cannot be removed, contact the manufacturer' s after-sales service;
E026	Inverter DC overvoltage protection	Pause for automatic recovery

		after-sales service;
E037	Abnormal MOS tube of battery A	Pause use, remove the load and charging plug, and restart the machine; If the fault cannot be removed, contact the manufacturer's after-sales service;
E038	Abnormal MOS tube of battery B	Pause use, remove the load and charging plug, and restart the machine; If the fault cannot be removed, contact the manufacturer's after-sales service;
W001	Low Battery Warning	The battery is low. You are advised to charge it right away
W002	Battery temperature alarm (charge 60°C discharge 65°C)	High battery temperature
W003	Inverter 1615 temperature alarm (120°C)	The internal inverter temperature is high. You are advised to reduce the power
W004	Inverter 8026 temperature alarm	The internal inverter temperature is high. You are advised to reduce the

	(80°C)	power
W005	Full bridge (aluminum cylinder) temperature alarm (100°C)	The internal inverter temperature is high. You are advised to reduce the power

What's In the Box

1. Outdoor portable energy storage power station host
2. Two battery modules
3. AC 100-120V/15A power cable
4. Vehicle charging cable
5. Vehicle recharge cable
6. Vehicle socket output cable
7. User manual
8. Qualification certificate

Contact us

Foxtheon Energy Technology (Fujian) Co., Ltd.
Web: www.foxtheon.com
E-mail: info@foxtheon.com
Address: Haixiyuan Hi-tech Zone, Fuzhou, China

E027	Inverter DC undervoltage protection	Pause for automatic recovery
E028	Inverter output zero crossing fault	Pause use, remove the load and charging plug, and restart the machine; If the fault cannot be removed, contact the manufacturer's after-sales service;
E029	Inverter output overtemperature protection	Pause for automatic recovery
E030	Inverter output overvoltage	Pause for automatic recovery
E031	Failure of the inverter parameter configuration	Pause use, remove the load and charging plug, and restart the machine; If the fault cannot be removed, contact the manufacturer's after-sales service;
E032	DC input voltage is abnormal. Procedure	Pause use, remove the load and charging plug, and restart the machine; If the fault cannot be

		removed, contact the manufacturer's after-sales service;
E033	Abnormal DC input voltage	Pause use, remove the load and charging plug, and restart the machine; If the fault cannot be removed, contact the manufacturer's after-sales service;
E034	Failure of inverter hardware	Pause use, remove the load and charging plug, and restart the machine; If the fault cannot be removed, contact the manufacturer's after-sales service;
E035	Abnormal sampling of battery A	Pause use, remove the load and charging plug, and restart the machine; If the fault cannot be removed, contact the manufacturer's after-sales service;
E036	Abnormal sampling of battery B	Pause use, remove the load and charging plug, and restart the machine; If the fault cannot be removed, contact the manufacturer's