

# Steam Boilers

## FSB10, FSB12, FSB15, FSB18



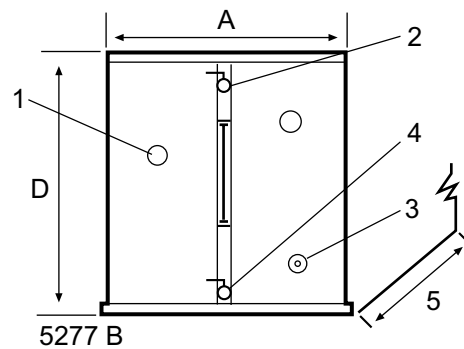
### Features and benefits

- Range of capacity from 13-25 kg steam/hour
- Steam boiler with electronic water level sensor, which ensures correct water level and long lifetime of the heating elements
- Free standing boiler
- Simple installation and maintenance
- Standard with integral water feed pump

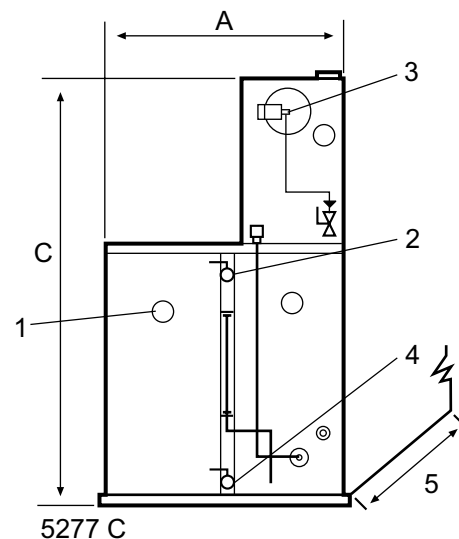
### Main options

- Tank for condensate recovery efficiency
- Variable heating control for energy saving when full capacity is not required

Electrical connections		FSB10	FSB12	FSB15	FSB18
Voltage					
208-240V 3 AC 50/60 Hz					
380-415V 3/3N AC 50/60 Hz		kW	kW	kW	kW
Boiler heating options		Heater			
Steam output	Groups	Rating			
13 kg/h	(5+5 optional)	10 kW	11	-	-
16 kg/h	(6+6 optional)	12 kW	-	13	-
20 kg/h	(7.5+7.5 opt.)	15 kW	-	-	16
25 kg/h	(9+9 optional)	18 kW	-	-	-
			-	-	19
Steam outlet, drain, water connections					
Steam	DN	15	15	15	15
Max. steam pressure	kPa	580	580	580	580
Water supply	int. dia. mm	13	13	13	13
Boiler drain	DN	15	15	15	15
Boiler details					
Vessel capacity	Litres	20	20	20	20
Shipping data					
	Net without tank, kg	84	84	84	84
	Net with tank, kg	113	113	113	113
Dimensions in mm					
A	Width	650	650	650	650
B	Depth	410	410	410	410
C	Height	1260	1260	1260	1260
D		700	700	700	700
1 Electrical connection					
2 Steam out-let					
3 Water supply					
4 Boiler drain					
5 Depth, front to back dimension 410 mm					



Standard



Boiler with tank

