

## Time setting

### Set



### Go



- A Normal position of the crown
- C Position for setting the time

To set the time, pull the crown out to position **C** and turn clockwise or anticlockwise. After resetting has been completed, press the crown back to position **A**.

## Date

### Set

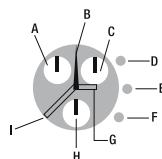


### Go



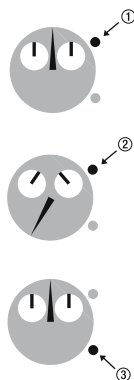
To set the date, pull the crown out to position **B**, and turn anticlockwise. After resetting has been completed, press the crown back to position **A**.

## Display



- A Minutes counter (60 minutes)
- B Seconds counter
- C  $\frac{1}{10}$  second counter
- D Push-button
- E Crown
- F Push-button
- G Hours hand
- H Seconds hand
- I Minutes hand

## Timing mode

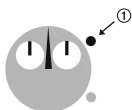


### Press...

1. The upper push-button to start the chronograph.
2. Once again to read the elapsed time.
3. The lower push-button to reset.

## Split time

Go



Stop



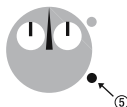
Go



Stop



Reset

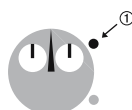


### Press...

1. The upper push-button to start the chronograph.
2. The lower push-button to read the intermediary time.
3. Once again to continue (repeat the last two actions as many times as you wish to read the intermediary time while the chrono carries on).
4. The upper push-button to stop finally.
5. The lower push-button to reset.

## Add Functions

Start



Read



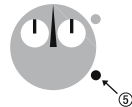
Restart



Read



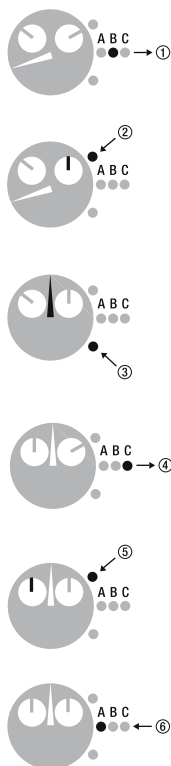
Reset



### Press...

1. The upper push-button to start.
2. Press the upper push-button to read the first time.
3. Press the upper push-button to restart the chronograph.
4. Press the upper push-button to read the additional time (repeat these two steps as many time as you wish).
5. Press the lower push-button to reset.

## Readjustment

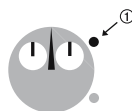


Adjusting the chronograph (ex: after battery change or a hard shock)

1. Pull the crown to position **B**.
2. Press the upper button to reach the position 12 h 00 with the hand of the  $\frac{1}{10}$  sec. counter.
3. Pull the lower button to reach the position 12 h 00 with the hand of the seconds.
4. Pull the crown to the position **C**.
5. Press the upper button to reach the position 12 h 00 with the hand of the minutes counter.
6. Press the crown to position **A**.

## Tachometer

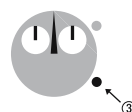
**Go**



**Stop**



**Reset**



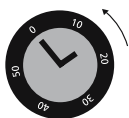
Measure the speed Base 100 or 1000m.

**Press...**

1. The upper push-button when an action starts.
2. Once again to stop after a distance of 100 or 1000 m. Read the speed indicated by the 60 seconds counter on the tachometer scale (km/h = kph).
3. The lower push-button to reset.

## turning bezel

### Set



### Read



## Using the adjustment ring

For setting the start time and duration of an activity. Line up the marker on the adjustment ring with the minute hand. Timing starts at the time indicated by the marker. The elapsed time is indicated by the minute hand pointing the number on the adjustment ring.

The previous text only applies to the adjustment ring for the dive function. Please refer to the enclosure for other functions such as the internet navigator (or similar).

## Internet Navigator Bezel

Swatch Internet Time is a universal time, all over the world, without time zones or geographic borders.

The current 24 hours are divided into 1000 Swatch beats. @000 Swatch Internet Time represents midnight (CET-wintertime) in Biel, Switzerland, the home of Swatch. If you live outside of Central European Time (CET-wintertime) refer to the «time zone map» and turn the Navigator Bezel until your indicated time zone number is at the 12 o'clock position. Read the Swatch Internet Time on the bezel that faces the hour hand. (If it is between two numbers, read the lesser numbers).

Note the small numbers on the dial facing the minute hand and add them to the numbers facing the hour hand.

# Timezone Map

