



MP152 PAK

MP3 & Video Player with FM Radio



Instruction Manual

Please read this manual carefully before operation

Table of Contents

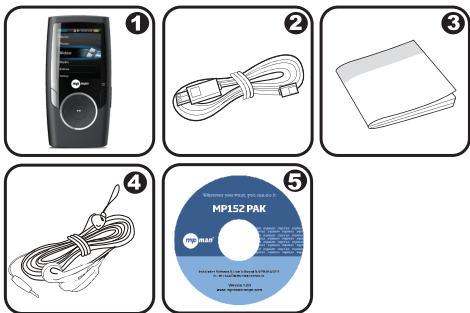
TABLE OF CONTENTS	2
PACKAGE CONTENTS	4
FEATURES	5
CONTROLS AT A GLANCE	6
Disabling the Controls	7
GETTING STARTED	8
Charging the Battery	8
Charging with a Computer	8
Turning the Player On/Off	8
Resetting the Player	9
MAIN MENU	10
Main Menu Controls	10
MUSIC MODE	11
Music Browser Controls	11
Now Playing Controls (Music Playback)	13
Quick Option Menu	14
PHOTO MODE	16
Photo Browser Controls	16
Photo Viewer Controls	17
VIDEO MODE	18
Video Browser Controls	18
Video Playback Controls	19
RADIO MODE	20
Radio Tuning Controls	20
TEXT MODE	23
Text Browser Controls	23
Text Reader Controls	23

Table of Contents

RECORD MODE	26
Voice Playing Controls	26
Quick Option Menu	26
EXPLORER MODE	29
Explorer Controls	29
SETUP MODE.....	30
TRANSFERRING FILES TO THE PLAYER	32
Transferring with Microsoft Windows	33
Transferring with Macintosh OS X.....	33
Disconnecting from a Computer	34
Microsoft Windows.....	34
Macintosh OS X.....	35
VIDEO CONVERSION	36
TROUBLESHOOTING.....	37
SPECIFICATIONS	40

Package Contents

Please make sure that the items shown below are included in the package. Should an item be missing, please contact the local retailer from which you purchased this product.

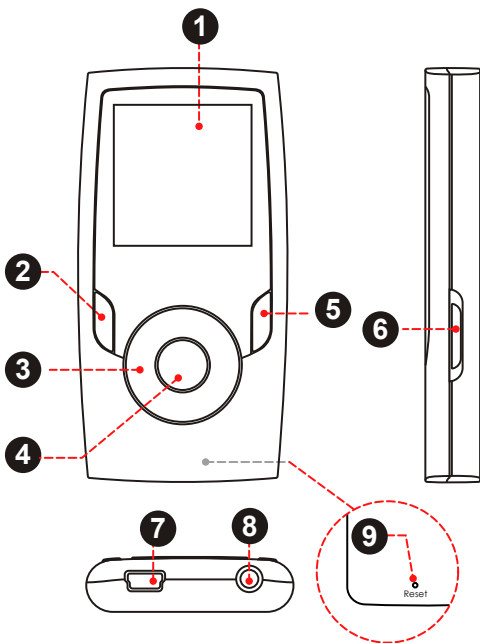


1. MP152 PAK
2. USB Cable
3. Instruction Manual & Documentation
4. Professional Stereo Earphones
5. Installation CD





Features

- ✦ Integrated flash memory
- ✦ 1.5" full-color LCD display
- ✦ Plays music, video, photos and text
- ✦ ID3 and LRC support for song and synchronized lyric information display
- ✦ Integrated Microphone for Digital Voice Recording
- ✦ Integrated FM Radio and Recorder
- ✦ USB 2.0 Hi-speed for fast file transfers

Controls at a Glance



Controls at a Glance

Front View		
1. LCD Display		
2. Menu Button		<MENU>
3. Control Buttons		<UP>
		<DOWN>
		<LEFT>
		<RIGHT>
4. Enter Button		<ENTER>
5. Option Button		<OPTION>
Side View		
6. Power/Hold Switch <i>Slide and hold the switch down for Power, slide it up for Hold.</i>		<POWER>
Bottom View		
7. USB Port/Charge		
8. 3.5mm Headphone Jack		
Rear View		
9. Reset Button		<RESET>

Getting Started

Charging the Battery

Your player has an integrated rechargeable battery. Upon initial use, the battery should be charged fully to ensure optimal performance and battery life.

If the player has not been used in a while, the battery may need to be recharged overnight (about 8 hours).



The battery used in this device may present a fire or chemical burn if mistreated. Do not disassemble, incinerate, or heat the battery. Do not leave the battery in a place subject to direct sunlight, or in a car with its windows closed.

Do not connect the player to a power source other than that which is indicated here or on the label as this may result in the risk of fire or electric shock.

Charging with a Computer

Your player can be charged through a USB computer connection. Use the supplied USB cable to connect the player to a high-power USB port of a computer. The computer must be powered on and not in sleep mode.



When the player is connected and charging, a USB symbol will be displayed on the player's screen.

Turning the Player On/Off

- ✦ To turn the player on, slide and hold the <POWER> switch down until the screen turns on.

Getting Started

- ✦ To turn the player off, slide and hold the <POWER> switch down until the screen turns off.

Resetting the Player

Reset the player if it should freeze and not respond or otherwise malfunction.

1. Disconnect your player if it is connected to a computer.
2. Use a paper clip to gently press the <RESET> button located on the rear of the player.

Disabling the Controls (Hold)

When the <POWER> switch is set to the “Hold” position, your player’s controls are disabled.

You may want to disable the controls to avoid turning on the player or activating the controls accidentally when it is in your pocket or bag.

- ✦ To disable the controls, slide the <POWER> switch up until it clicks into the “Hold” position.
- ✦ To enable the controls, slide the <POWER> switch down to release it from the “Hold” position.



A lock icon will appear on the screen when the controls are disabled. Re-enable the controls to continue.

Main Menu

When you turn on the player, you will see the Main menu. The Main menu gives you access to the different function modes of your player. These modes are:

- Music: Browse and play music.
- Photo: Browse and view Photos.
- Video: Browse and play Videos.
- Radio: Listen to FM radio broadcasts.
- Text: Browse and read text files.
- Record: Make or play voice recordings.
- Explorer: Browse all files.
- Setup: Adjust the player's options.



Select “Extras” from the Main Menu to get the “Text”, “Record”, and “Explorer” menus.

Main Menu Controls

- ✦ To browse through the different modes, press <UP> or <DOWN>.
- ✦ To select a mode, press the <ENTER> button.

Music Mode

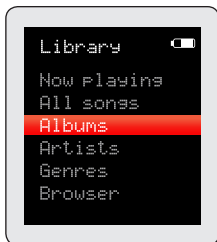
Browse for and play your music files.

i If you have loaded new music files onto the player, the music library will need to be refreshed when you enter Music mode. This process may take several minutes. You will not be able to access the Music Browser screen until you refresh the music library.

For more information about how to get music onto your player, please refer to the section “Transferring Files to the Player”.


Music Browser Controls

When you choose MUSIC mode from the Main menu, you will see the Music Browser screen. You can choose to browse your music by song name, album, artist, or genre, or you may choose “Browser” to view the music files and folders on the player.




Function	Key Action
To browse through the list	Press <UP> or <DOWN>
To select an item	Press <ENTER>
To return to the previous screen	Press <MENU>
To return to the Main menu	Hold <MENU>

Music Mode

-  *If your music files contain ID3 song information tags, you will be able to view your tracks by Artist, Album, or Genre. To view all files (including those that do not contain ID3 information), select “All Songs” or use the “Browser” option.*

If music is already playing, you will have the additional option to return to the Now Playing screen.


-  *Lyric display requires a “.LRC” lyric file which may be found on the internet or may be created with a Lyric file editor. Lyric files can contain synchronized timing information as well as lyric information.*

Lyric files must have the same name as its corresponding music file (e.g., “SongTitle1.lrc” and “SongTitle1.mp3”) and must be placed in the same directory.

Using the Quick Play List

To create a quick Play List that contains your favorite songs:

1. Select “Browser” from the Music Browser screen.
2. Use the Browser controls to select a song to add.
3. Press <OPTION>. The screen will display “Add to List”.
4. Press <ENTER> to finish adding the song to the Play List.

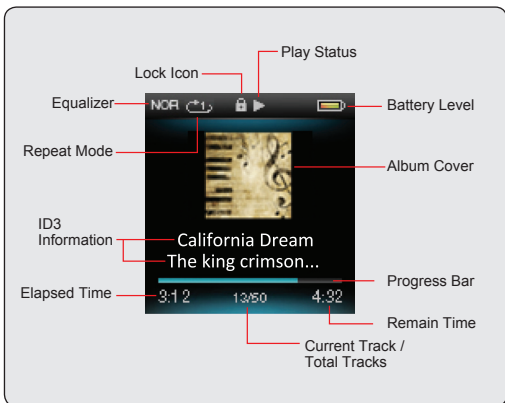
-  *This quick Play List can be played from the Quick Option menu of the Now Playing screen (see page 15 for more details).*

Music Mode

Now Playing Controls (Music Playback)

To start playing music, browse for a song and then press <ENTER> to start playback.

When a song is playing, the Now Playing screen appears (see below).



Music Mode

The following functions may be performed from the Now Playing screen.

Function	Key Action
To play the next track	Press <RIGHT>
To play the previous track	Press <LEFT>
To forward-scan quickly through the current track	Hold <RIGHT>
To reverse-scan quickly through the current track	Hold <LEFT>
To pause/resume playback	Press <ENTER>
To access the Quick Option menu (see below for details)	Press <OPTION>
To adjust the volume level	Press <UP> or <DOWN>
To return to the Music Browser screen	Press <MENU>
To return to the Main menu	Hold <MENU>

Quick Option Menu

To access the quick option menu, press <OPTION> on the Now Playing screen.

- ✦ To browse through the settings, press <UP> or <DOWN>
- ✦ To select a setting, press <ENTER>
- ✦ To return to the previous screen, press <MENU>

Music Mode

Equalizer

Select a digital equalizer preset to optimize the way the player processes audio signals. The options are: Normal, Pop, Rock, Classic, Jazz, and Bass.

Repeat

Change the repeat options to adjust the order in which tracks are played.

Item	Description
No Repeat	Play tracks in normal order and no repeat.
One	Play the current track repeatedly.
All	Play all tracks repeatedly.
RandomAll	Play all tracks in random order.
Dir Normal	Repeat all tracks in the current folder.

Library

Return to the Music Browser screen.

Play List

Select "Play List" and then "My List" to play a list of your favorite songs.



To add songs to the list, see the section "Music Mode > Music Browser Controls > Using the Quick Playlist".

Lyric

Set the Lyric display ON or OFF.

Photo Mode

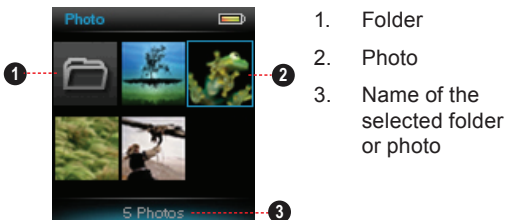
Browse for and view your photo files (JPG and BMP).



For more information about how to get Photos onto your player, please refer to the section “Transferring Files to the Player”.

Photo Browser Controls

When you choose PhotoS mode from the Main menu, you will see the Photo Browser screen. Your Photos will be displayed as thumbnail images.



Use the Photo Browser to find all Photo files loaded on your player.

Function	Key Action
To browse through the Photos & folders	Press <UP>, <DOWN>, <LEFT>, <RIGHT>
To select/view an item	Press <ENTER>
To return to the previous screen	Press <MENU>

Photo Mode

Function	Key Action
To return to the Main menu	Hold <MENU>

Photo Viewer Controls

To view a Photo, browse through the thumbnail Photos and then press <ENTER>.

The following functions may be performed from the Photo Viewer screen.

Function	Key Action
To view the next Photo	Press <RIGHT>
To view the previous Photo	Press <LEFT>
To start or stop slideshow mode	Press <ENTER>
To return to the Photo Browser screen	Press <MENU>
To return to the Main menu	Hold <MENU>

Video Mode

Browse for and play your Video files.



Your player supports MTV files encoded at 128 x 128 and 25 fps. Videos may need to be encoded with the included software for device playback.

For more information about converting video, please refer to the section “Video Conversion”.

For more information about how to get Videos onto your player, please refer to the section “Transferring Files to the Player”.

Video Browser Controls

When you choose VideoS mode from the Main menu, you will see the Video Browser screen.

Use the Video Browser to find all Video files loaded on your player.

Function	Key Action
To browse through the list of Video files & folders	Press <UP> or <DOWN>
To select/play an item	Press <ENTER>
To return to the previous screen	Press <MENU>
To return to the Main menu	Hold <MENU>

Video Playback Controls

The following functions may be performed from the Now Playing screen.

Video Mode

Function	Key Action
To play the next Video	Press <RIGHT>
To play the previous Video	Press <LEFT>
To forward-scan quickly through the current Video	Hold <RIGHT>
To reverse-scan quickly through the current Video	Hold <LEFT>
To pause/resume playback	Press <ENTER>
To adjust the volume level	Press <UP> or <DOWN>
To return to the Video Browser screen	Press <MENU>
To return to the Main menu	Hold <MENU>

Radio Mode

Listen to FM radio broadcasts.



You must have a pair of headphones connected to the headphone jack to receive FM broadcasts; your player will utilize the headphone cord as an antenna.

Radio Tuning Controls

When you choose RADIO from the Main menu, you will see the Radio Tuning screen. You can search for stations, tune to stations manually, or tune to preset stations.



You must have saved preset stations prior to using preset tuning mode. Hold <ENTER> to automatically save all stations within reception range as preset stations. This will overwrite all previously saved preset stations.

The following functions may be performed from the Radio Tuning screen.

Function	Key Action
To auto-save all available stations as preset stations	Hold <ENTER>
To tune to a higher station	Press <RIGHT>
To tune to a lower station	Press <LEFT>
To scan to the next highest station (normal mode only)	Hold <RIGHT>
To scan to the next lowest station (normal mode only)	Hold <LEFT>
To access the Quick Option Menu	Press <OPTION>

Radio Mode

Function	Key Action
To adjust the volume level	Press <UP> or <DOWN>
To return to the Main menu	Hold <MENU>

Quick Option Menu

To access the quick option menu, press <OPTION> on the Radio screen.

- ✦ To browse through the settings, press <UP> or <DOWN>
- ✦ To select a setting, press <ENTER>
- ✦ To return to the previous screen, press <MENU>

Preset/Manual

Set the FM Tuning mode to Manual or Preset.

Save/Delete Channel

Manual Mode: Save the current station to the Preset Station list.

Preset Mode: Delete station(s) from the Preset Station list.

Forced Mono

Set the stereo reception on or off.

Radio Mode

Sensitivity

Set the sensitivity of Auto-Scan feature.

Auto Presetting

Scan for all stations in broadcast reception range. The player will automatically seek and save all frequencies with a broadcast signal to the Preset Station list.



The auto scan feature will overwrite any previously stored Preset Stations.

Area

Set the FM frequency range area (Worldwide, World (US), World (JP)).

FM Record


Make recordings of FM radio broadcasts.

The player will start the recording immediately.

1. Press <ENTER> to pause recording; press <ENTER> again to resume recording.
2. Press <MENU> to stop and save the recording. The recorded file will be saved to the folder "FM.IN.DIR" and named "FMXXXX.WAV" where XXXX corresponds to the numerical sequence in which the recording was made (numbering starts from 0001)

Text Mode

Read text files loaded on your player (TXT).

 For more information about how to get text files onto your player, please refer to the section “Transferring Files to the Player”.

Text Browser Controls

When you choose Text from the Main menu, you will see the Text Browser Screen.

- ✦ Choose “All EBooks” to view all text files on the player.
- ✦ If text is already reading, you will have the additional option to return to the “Now Reading” screen.

Use the Text Browser to find all text files loaded on your player.

Function	Key Action
To browse through the list of text files & folders	Press <UP> or <DOWN>
To select/view an item	Press <ENTER>
To return to the previous screen	Press <MENU>

Text Reader Controls

The following functions may be performed from the Text Display screen.

Text Mode

Function	Key Action
To read the next page	Press <DOWN>
To read the previous page	Press <UP>
To toggle the auto-scroll function	Press <ENTER>
To return to the Text Browser screen	Press <MENU>
To return to the Main menu	Hold <MENU>

Quick Option Menu

The Quick Option menu gives you easy access to your player's option settings.

Press <OPTION> to access the Quick Option menu.

Go to Page

Skip to a page directly.

- ✦ Press <LEFT> or <RIGHT> to select a field to adjust.
- ✦ Press <UP> or <DOWN> to adjust the selected field.
- ✦ Press <ENTER> to confirm.

Bookmark

Select to Save Bookmark, Load Bookmark, or Delete Bookmark.

Text Mode

The player will display the previous bookmark(s) after you confirm Bookmark from the Quick Option menu.

- ✦ Press <UP> or <DOWN> to display the desired bookmark, then press <ENTER>:
 - ✧ Save Bookmark: Save the current location as a bookmark.
 - ✧ Load Bookmark: Open (go to) the desired bookmark that you choosed just now.
 - ✧ Delete Bookmark: Delete the desired bookmark that you choosed just now.
- ✦ When you toogle to the last bookmark, press <ENTER> twice to save the current location as a new bookmark.

Set Font Color

Set the text color of the display.

Auto Scroll

Set the auto page scroll on or off.

Auto Scroll Time

Press <UP> or <DOWN> to adjust the amount of time between pages during Auto Scroll mode.

Record Mode

Play your digital voice recording files or record sounds from external audio sources.

Voice Playing Controls

The following functions may be performed from the Voice Playing screen.

Function	Key Action
To play the next track	Press <RIGHT>
To play the previous track	Press <LEFT>
To forward-scan quickly through the current track	Hold <RIGHT>
To reverse-scan quickly through the current track	Hold <LEFT>
To pause/resume playback	Press <ENTER>
To access the Quick Option menu (see below for details)	Press <OPTION>
To adjust the volume level	Press <UP> or <DOWN>
To return to the Main menu	Hold <MENU>

Quick Option Menu

To access the quick option menu, press and hold <ENTER> on the Voice Playing screen.

Record Mode

- ✦ To browse through the settings, press <UP> or <DOWN>
- ✦ To select a setting, press <ENTER>
- ✦ To return to the previous screen, press <LEFT>

Repeat

Change the repeat options to adjust the order in which tracks are played.

Item	Description
No Repeat	Play tracks in normal order and no repeat.
One	Play the current track repeatedly.
All	Play all tracks repeatedly.
RandomAll	Play all tracks in random order.
Dir Normal	Repeat all tracks in the current folder.

Quality

Set the quality of the recording.



Lower quality recordings will take up less memory than higher qual-ity recordings.

Start Record

Make voice recordings through the integrated microphone located on the back of your player.

The player will start the recording immediately.

Record Mode

1. Press <ENTER> to pause recording; press <ENTER> again to resume recording.
2. Press <MENU> to stop and save the recording. The recorded file will be saved to the folder "MICIN.DIR" and named "MICXXXX.WAV" where XXXX corresponds to the numerical sequence in which the recording was made (numbering starts from 0001).

Explorer Mode

Enter Explorer mode to view and delete folders and files loaded on your player.

To enter Explorer mode, select and confirm EXPLORER from the Main Menu.

Explorer Controls

When you choose EXPLORER mode from the Main menu, you will see the File Explorer screen. You can find and delete files or folders from the player.

Function	Key Action
To browse through the list of files & folders	Press <UP> or <DOWN>
To select a folder	Press <ENTER>
To return to the previous screen	Press <MENU>
To delete a selected item	Press <OPTION>
To return to the Main menu	Hold <MENU>

Setup Mode

Enter the Setup mode to set your player's system options.

To enter Settings mode, select SETUP in the Main menu.

Function	Key Action
To browse through the options	Press <UP> or <DOWN>
To select an item	Press <ENTER>
To cancel and return to the previous screen	Press <MENU>
To return to the Main menu	Hold <MENU>

The following options are available. Some of these options may be set from the Quick Option menus.

Item	Description
Display	
Backlight	Adjust the duration of time (in seconds) that the backlight will remain on after a key press. A setting of "Always On" will keep the backlight on continuously.
Time	

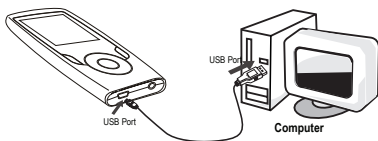
Setup Mode

Item	Description
Sleep	Set a sleep timer to turn the player off automatically.
Language	
--	Set the language that the on-screen menus appear in.
Sys Tools	
Format	It may become necessary to format your player if data or files become corrupt. You may choose either Quick or Complete formatting. A Complete format will take more time.
Reset	Restore all of the player's settings to their factory-default state.
Sys Info	View Firmware & Memory Usage information.
Sort	Sort all music that loaded on your player. Select "Force Sort" to update the music library immediately. This process may take several minutes if you have transferred music files to the player recently.

Transferring Files to the Player

Connect the player to a computer with the USB 2.0 cable provided to:

- ✦ Transfer files to and from your player
- ✦ Perform basic file management functions.



Upon connection:

- ✦ Your computer will automatically recognize the player as a Removable Disk.
- ✦ To open the player to view files, double-click the icon that appears.

Once you have opened the player's folder, simply drag and drop files to the player as you would a floppy disk.

- ✦ Copy music files to the root directory.
- ✦ Copy Video files to the "Video.DIR" folder
- ✦ Copy photo files to the "PHOTO.DIR" folder
- ✦ Copy text files to the "TEXT.DIR" folder.

Transferring Files to the Player

If you need further assistance with transferring files, please refer to your operating system's instruction manual or on-screen help. If you are using media management software such as iTunes, Winamp, or Windows Media Player, please refer to their documentation for support.

Transferring with Microsoft Windows

1. Open a file explorer window. Locate the files you would like to transfer from your computer. Select the files/folders with the mouse and press CTRL-C (copy) on the keyboard.
2. Double-click the "My Computer" icon on your desktop and then double-click the icon that represents your player (e.g., MP152 PAK / Removable Disk). The computer will display all files and folders currently stored in the player.
3. Press CTRL-V (paste) on the keyboard to transfer the files you selected in Step 1 to the player.

Transferring with Macintosh OS X

1. Open a finder window. Locate the files you would like to transfer from your computer. Select the files/folders with the mouse and press APPLE-C (copy) on the keyboard.
2. Click on the Removable Disk icon located on the left side of the finder window. The computer will display all files and folders currently stored in the player.

Transferring Files to the Player

3. Press APPLE-V (paste) on the keyboard to transfer the files you selected in Step 1 to the player.

Disconnecting from a Computer

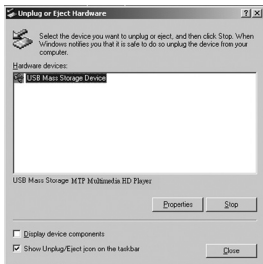
To avoid data loss or file/firmware corruption, disconnect the player as instructed below or as by your specific operating system.

Microsoft Windows

1. Double-click the green arrow in the taskbar located on the lower-right side of the computer screen (Safely Remove Hardware).



2. **Safely Remove Hardware:** Select “USB Mass Storage Device” from the list that appears and then click on “Stop”.



Stop a Hardware Device:

Select “USB Mass Stor-

age Device” from the list that appears and then click on “OK”.

3. When the “Safe to Remove Hardware” window appears, click the OK button and disconnect the USB cable from the player and your computer.

Transferring Files to the Player

Macintosh OS X

1. On the left side of the Finder Window, identify the appropriate Removable Disk icon.
2. Click on the “Eject” arrow on the right of the Removable Disk icon.
3. Disconnect the USB cable from the player and your computer.



Video Conversion

For Video and music synchronisation and conversion, please use MPMANAGER software supplied in the CD ROM.

This software can be used also for UPDATE of your player

MPMANAGER manual is included in your CDROM

Troubleshooting

If you have a problem with this device, please read the troubleshooting guide below.

The player does not turn on.

- ✦ Ensure that the player is fully charged. Try charging the player overnight (8 hours).
- ✦ Reset the player (use a paper clip to gently press the Reset button on the rear of the player) and try again.

The buttons do not work.

- ✦ Reset the player (use a paper clip to gently press the Reset button on the rear of the player) and try again.

I cannot transfer files to the player.

- ✦ Ensure that your computer is running a supported operating system.
- ✦ If using a USB extension cable, ensure that it is securely attached to the player and the PC, or try using another USB cable.
- ✦ If you have connected the player through a USB hub, try connecting the player directly to your computer.
- ✦ Ensure that the player's memory capacity is not full.

There is no sound during playback.

Troubleshooting

- ✦ Check the volume level.
- ✦ Ensure that the headphones are attached securely to the player.

The sound quality of the music is poor.

- ✦ Try playing the file on your computer. If the sound quality is still poor, try downloading the file again or re-encoding the file yourself.
- ✦ Ensure that the bit rate of the file is not too low. The higher the bit rate of the file, the better it will sound. The minimum recommended bitrate is 128kbps for MP3s and 96kbps for WMAs.
- ✦ Try lowering the volume of the player.
- ✦ Ensure that the headphones are attached securely to the player.

The player will not play my music file.

- ✦ Ensure that the file is in a compatible format.
- ✦ The file may be copy-protected and you no longer have authorization to play this file. If you feel this is in error, please contact the service from which you downloaded the file.

The LCD characters are corrupted or something is wrong with the display.

- ✦ Ensure that the correct menu language has been set.

Troubleshooting

- ✦ Reset the player (use a paper clip to gently press the Reset button on the rear of the player) and try again.

The player has malfunctioned.

- ✦ Reset the player (use a paper clip to gently press the Reset button on the rear of the player) and try again.

Specifications

Display Type	1.5" Full-Color LCD @ 128x128
Memory	MP152 PAK FM 2GB: 2GB Flash MP152 PAK FM 4GB: 4GB Flash MP152 PAK FM 8GB: 8GB Flash
Audio Format Support	MP3, WMA
Video Format Support	MTV: 128x128, 25fps
Photo Format Support	JPG, BMP
Song Info Support	ID3, Windows Media
FM Frequency Range	87.5 - 108.0MHz
PC Interface	USB 2.0 (MSC)
Plug and Play Support	Windows 2000/XP/Vista Macintosh OS X
Audio Output	3.5mm Stereo (Headphone)
Audio Input	Integrated Microphone
Power Supply	Rechargeable Lithium-Polymer Battery USB Charge
Play Time	Music: 15 hours*
Unit Dimensions	1.65" x 3.18" x 0.38" (WHD)

Specifications and manual are subject to change without notice.

** Music play time is an estimated value based on playing an MP3 encoded at 128 kbps. Actual play time may vary depending on encoding method used and other factors.*

For more information please check our website

www.mpmaneurope.com



CE



A pleine puissance, l'écoute prolongée du baladeur peut endommager l'oreille de l'utilisateur