

iriver

T10

<http://www.iriveramerica.com>

Instruction Manual

T10

Thank you for your purchase.
Please read this manual carefully
before using your new player.

Firmware Upgradable™



iriver <http://www.iriveramerica.com>

- Some features might not be available in every region.

Before using the product

Welcome	03
Homepage	03
Copyrights/Certification/Trademarks/Limited Liability	04

Chapter 1 | Getting started

Components	07
Location of Controls	08
Connection/Installation	10

Chapter 2 | Quick start

Basic Usage	15
-------------------	----

Chapter 3 | Basic operation

MUSIC	19
BROWSER	26
IMAGE VIEWER	27
*FM RADIO	29
RECORDING	34

* Only for models including FM Radio function

Chapter 4 | Useful features

Menu Configuration	39
Menu Operation	40
Customizing the Function Settings	42
Listening to Audible™ files	57

Chapter 5 | Customer Support

Firmware Upgrade	61
Troubleshooting	62
Specification	63
Safety Information	64
FCC Certification	65



Welcome

Thank you for your iriver purchase

Thank you for your iriver purchase.

The T10 comes complete with a long list of advanced features. It is important that you read the manual to ensure that you get the most out of your new player.

<http://www.iriveramerica.com>

Obtain information about your player, look for updates, and find answers to questions at our web site.

- iriver website address is www.iriveramerica.com.
- The site provides product information and customer support.
- Use the firmware (system software) upgrade function of our products from the site to continuously improve the product performance.



Copyrights/Certification/Trademarks/Limited Liability

Copyrights


- iriver Limited has all the rights of the patent, trademark, literary property and intellectual property related to this manual. You may not reproduce any part of this manual unless authorized by iriver Limited. You can be punished by using any part of this manual illegally.
- The software, audio and video which have an intellectual property are protected by copyright and international laws. It is user's responsibilities when he/she reproduce or distribute the contents created by this product.
- The companies, institutions, products, people and events used in examples are not real data. We don't have any intension to be related with any companies, institutions, products, people and events through this manual and should not draw inferences. User's are responsible for observing the copyrights and intellectual properties.

©1999~2006 iriver Limited, All rights reserved

Certification

CE, FCC, MIC

Trademarks

- Windows 2000, Windows XP and Windows Media Player are the registered trademarks of Microsoft Corp.
-  is a trademark of SRS Labs, Inc. WOW technology is incorporated under license from SRS Labs, Inc.

Limited Liability

- Neither the Manufacturer, importers nor dealers is responsible for any accidental damage including bodily injury or any damage resulting from misuse or unsuitable operation by you.
- The information on this manual is prepared with the current player specifications. The manufacturer, iriver Limited, is adding new features to the product and may persistently apply new technologies hereafter. All standards may be changed at any time without notice.



Chapter

1

Components	07
Locating the controls	08
Product	08
LCD Screen display	09
Connection/Installation	10
Connecting to the PC	10
Connecting the earphones	11
Replacing the battery	11
Easy Start CD Installation	12



Components

• Accessories subject to change without notice and may vary from image shown.

Earphone



USB cable



Installation CD



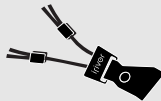
User Manual/ Warranty card/Quick Start Guide



Battery(AA Type, 1EA)



Neck strap for carrying



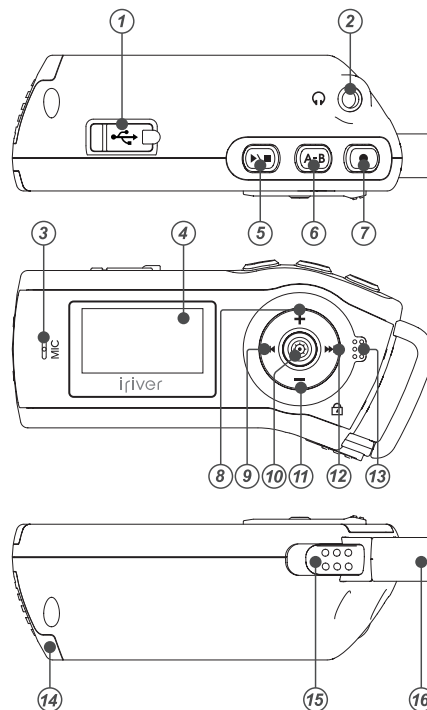
Carrying Case



Locating the controls

• Your player may differ slightly from that shown in the illustrations.

Product

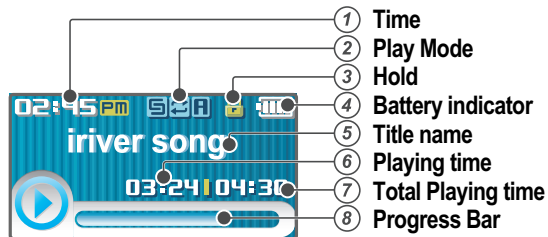


- ① USB connection port
- ② Earphone Jack
- ③ Microphone
- ④ LCD Screen
- ⑤ Play/Stop button
- ⑥ A-B (Interval repeat) button
- ⑦ Recording button
- ⑧ Volume + button
- ⑨ Previous/Fast Reverse button
- ⑩ NAVI/MENU button
- ⑪ Volume - button
- ⑫ Next/Fast forward button
- ⑬ Hold Switch
- ⑭ Battery cover
- ⑮ Neck Strap Locker
- ⑯ Neck Strap

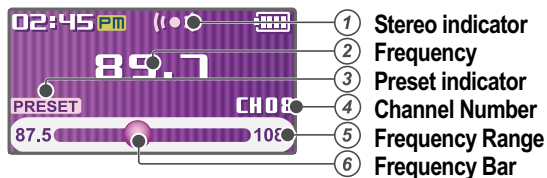
Locating the controls

LCD Screen display

1. MUSIC Mode



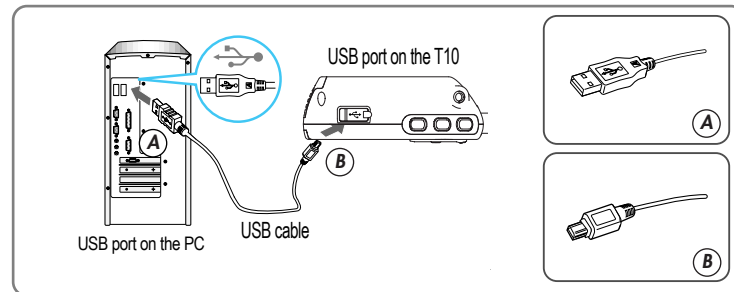
2. *FM RADIO Mode * Only for models including FM Radio function



Connection/Installation

Connecting to the PC

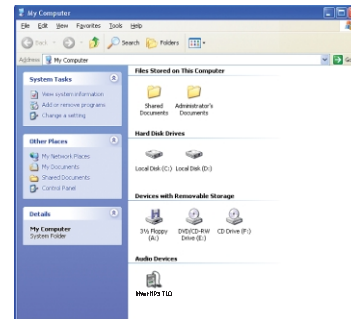
1. Connect the USB cable(provided) to the USB port on the player and to your PC.



2. Turn on the player, "USB Connect" icon will appear on the LCD screen of the player.



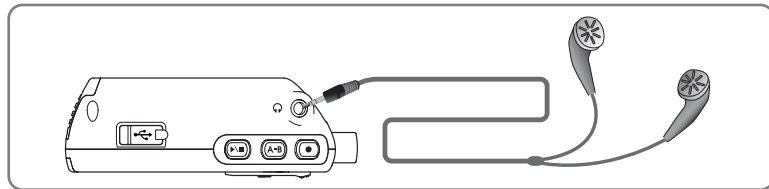
3. Once installed, open Windows Explorer and an additional drive should be listed called "iriver MP3 T10".



Connection/Installation

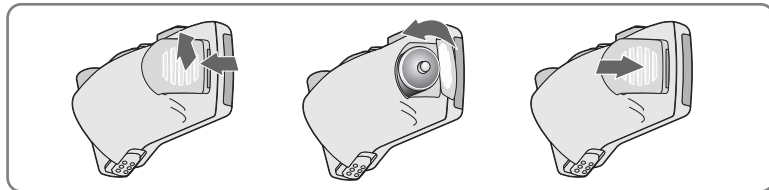
Connecting the earphones

1. Connect the earphones jack to the earphone socket on the player.



Replacing the battery

1. Open the battery cover.
2. Insert the battery. (AA 1.5V type x 1ea)
Be sure to match the + and - ends of the battery with the diagram inside the battery compartment.
3. Close the battery cover.



Note

- To avoid corrosion, remove the battery if the player is not to be used for a long time.
- Remove dead battery immediately to avoid damage from corrosion.
- When corrosion occurs, wipe the battery compartment immediately with a dry cloth and insert a new battery.

Connection/Installation

Easy Start CD Installation

1. Insert the Easy Start CD into the CD or DVD drive of a computer.
2. Follow the on-screen instructions on the computer to complete the installation of Windows Media Player 11.

iriver www.iriveramerica.com

Chapter

2

Basic Usage	15
Turning on/off the player	15
Playing a music file	15
Adjusting the volume	16
Selecting the function mode	16



Basic Usage

Turning on/off the player



1 Turning on the player

Press the ►/■ button to turn on the player.

Previous function mode will be displayed.



Note

- If the player does not power ON, please replace your battery.



2 Turning off the player

Press and hold the ►/■ button.

Turns off the player.



Playing a music file



1 When powered on, press and hold ⚙ button to display the function mode screen.

Press ◀◀, ▶▶ button to choose the desired function mode. Press ⚙ button to enter.



2 Press ◀◀, ▶▶ button to choose the desired music file.

Press ⚙ button to start playback.



Basic Usage

Adjusting the volume



1 Adjusting the volume

During the music file playback, press +, - button to adjust volume level.

- + : Increase volume level.
- : Decrease volume level.



Selecting the function mode



1 When powered on, press and hold ⚙ button to display the function mode screen.

Press ◀◀, ▶▶ button to choose the desired function mode.



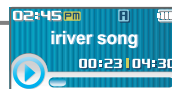
Note

<Only for models including FM Radio function>



2 Press ⚙ button to enter.

Press ►/■ button to cancel.



Basic operation



Chapter

3

MUSIC	19
Playing a music file	19
Changing playback mode	21
A-B Repeat	22
Changing the sound EQ	22
Getting music on your player	23
Deleting a file or folder on the player	25
Creating a iQuickList file on the player	25
BROWSER	26
BROWSER	26
IMAGE VIEWER	27
IMAGE VIEWER	27
Adding image file to player	27
*FM RADIO	29
Listening to *FM radio	29
Searching for a frequency - Manual Scan	30
Searching for a frequency - Auto Scan	30
Saving for a frequency - Manually	31
Saving for a frequency - Automatically	32
Selecting preset memory	32
Deleting a channel	33
RECORDING	34
To record *FM station	34
Recording voice	35
Note for recording	36
To play a recorded file	36

* Only for models including FM Radio function



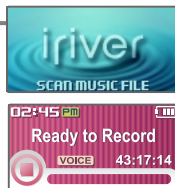
MUSIC

Playing a music file



1 Release HOLD switch, then press ►/■ button to turn on the player.

Previous function mode will display.



2 Press and hold ⚙ button to display the function mode screen. Press ◀◀, ▶▶ button to select [MUSIC] mode, then press ⚙ button to enter.



3 Use the ◀◀, ▶▶, +, - buttons to select a music file.

- ◀◀ : to go the upper folder
- ▶▶ : to go the sub folder
- + - : to select a file

To exit file list screen, press ►/■ button.



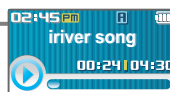
MUSIC



4 Press the ⚙ button to start music playback.

Press ►/■ to pause music playback.

Press ►/■ again to continue playing.



5 Adjusting the volume

During the music file playback, press +, - button to adjust volume level.

+ : Increase volume level.

- : Decrease volume level.



6 Skipping to previous/next file

During the music file playback, press ◀◀, ▶▶ button to skip to the previous/next file

◀◀ : previous file ▶▶ : next file



7 Fast searching

Press and hold the ◀◀, ▶▶ button for fast-forward or fast-reverse playback.

◀◀ : fast-rewind ▶▶ : fast-forward

Release the button for normal playback.



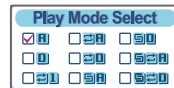


MUSIC

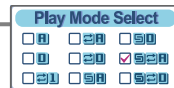
Changing playback mode



- While playing a music file, press the **●** button to display the playback mode select screen.



- Press the **◀◀, ▶▶, +, -** button to select desired playback mode.



The playback mode is changed to the selected mode.



Note

- The following icons are displayed to indicate playback mode.

Normal playback		Play all files in the player, then stop.
		Play all files in the current folder(playlist), then stop.
Repeat playback		Play a single file repeatedly.
		Play all files in the player repeatedly.
		Play all files in the current folder(playlist) repeatedly.
Shuffle playback		Randomly play all files in the player, then stop.
		Randomly play all files in the current folder(playlist), then stop.
Shuffle playback repeatedly.		Randomly play all files in the player repeatedly.
		Randomly play all files in the current folder(playlist) repeatedly.



MUSIC

A-B Repeat



- Press **A-B** button while playing to select the beginning (A) point.



- Press **A-B** button again to select the end (B) point.
Play a selected interval repeatedly.



To cancel interval repeat, press the **A-B** button.

Changing the sound EQ



- During the music file playback or pause, press **A-B** button, to display the EQ SELECT screen.



Note

- You can select one of the following EQ types:
NORMAL, CLASSIC, LIVE, POP, ROCK, JAZZ, U BASS, METAL, DANCE, PARTY, SRS, USER EQ



- Press the **◀◀, ▶▶, +, -** button to select desired sound EQ.
The sound is changed to the selected EQ.





MUSIC

Getting music on your player

Get the latest Windows Media Player

In order to copy music to your player, you must have Windows Media Player 11 installed.

The Easy Start CD should include the proper version of Windows Media Player.

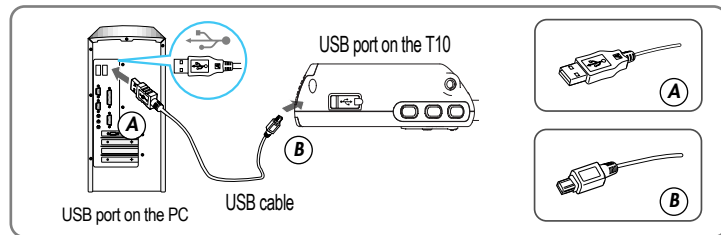
Windows Media Player 11 can also be found online at : www.microsoft.com/windows/windowsmedia/download/

Once Windows Media Player has been updated, use the following steps to load music onto your player.

* Please note, purchased music can only be copied to this player using Windows XP and the latest version of Windows Media Player.

1. Connect T10 to your computer

- Connect the USB cable to the USB port on the player and to the PC.
- Power on the T10.



2. Open Windows Media Player 11.

- Click Start → All Programs → Accessories → Entertainment → Windows Media Player.
- Click "Sync" from the menu button near the top of the screen.

Your music library will be displayed on the left, and the device information on the right.



MUSIC

3. Locate a song in the library and right-click on it.

Select **Add to "Sync List"**.

A "Sync List" will appear on the right side of Windows Media Player listing all the songs to be added to your player.

Repeat this step for all the songs you would like to add to your player.



- Click **Start Sync** to transfer the items on your Sync list to the player. A progress indicator will show each file transferring. When complete, copied songs will appear in the "Files You Added" list. Disconnect the player from your computer and enjoy your music!



Note

- If you prefer having your music library automatically synchronized to T10 :
 - Click the arrow below Sync tab, and select **iriver MP3 T10 - Set Up Sync**.
 - Select "Sync this device automatically" option.



MUSIC

Deleting a file or folder on the player



- 1 While in stop mode, press the button to display music list screen.
Select a file or folder to delete by using the , , , button.



: to go the upper folder : to go the sub folder
, : to select a file

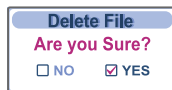
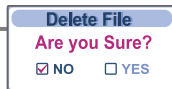


- 2 Press the A-B button to display Delete File or Folder screen.
Select "YES" by using the , button to delete, then press the button.



File or folder is deleted on the player.

- You can only delete an empty folder.



Creating a iQuickList file on the player



- 1 While in stop mode, press the button to display music list screen.
Select a file to add to iQuickList by using the , , , button.



: to go the upper folder : to go the sub folder
, : to select a file

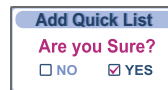
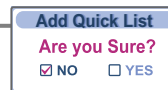


BROWSER

You can create on-the-fly quicklist(iQuickList) on the device without a computer.



- 2 Press and hold the A-B button to add the track to iQuickList.
Select "YES" by using the , button to add, then press the button.
iQuicklist.pla will be saved on the root and select the file to play iQuickList.



Note

- You can remove a track from iQuickList by pressing A-B button.
(It does not delete the file itself from the device)
- Removing a track from iQuickList is not available during playback.
- Only , , , , and are available when playlist playback.

BROWSER



- 1 Press and hold the button to display the function mode screen.
Press the , button to select [BROWSER] mode, then press the button to enter.



- 2 File list screen is displayed on the LCD screen.





IMAGE VIEWER

IMAGE VIEWER



- 1** While BROWSER mode, select a image file by using the ◀◀, ▶▶, +, - button.
Press the ⚙ button to to view .

◀◀ : to go the upper folder ▶▶ : to go the sub folder
+ , - : to select a file
⚙ : to execute image viewer



Note

- Image file may not display if file is damaged.
- Only 4/8/16/24 bit Mono/Color BMP file can be displayed.
- RLE type BMP file is not supported.

Adding image file to player

1. Connect the player and PC using the cable supplied with the player and power it on. (Refer to page 10.)
2. Open "Start - My Computer".

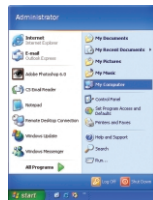
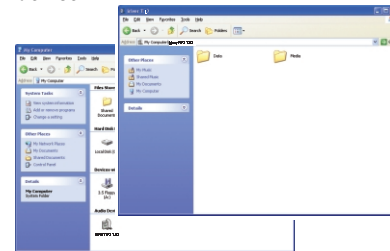
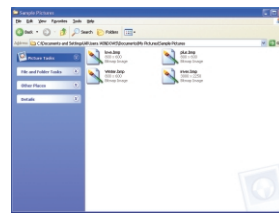
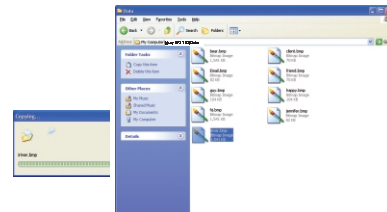
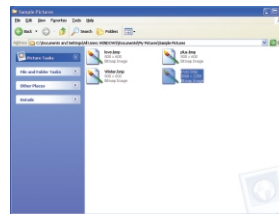


IMAGE VIEWER

3. Locate your image files(BMP), usually found in "My Documents" then "My Pictures", keep this folder open.
4. Open a second My Computer window. Double click on the **iriver MP3 T10** device.



5. To get images on the player, drag and drop the image files from your PC to a temporary folder in the iriver MP3 T10 portable device.
6. A progress window will appear while files are copying.



7. Disconnect the USB cable once all copying has finished.



*FM RADIO

* Only for models including FM Radio function

Listening to FM radio



- 1 Press and hold button to display the function mode Screen.
Press the , button to select [FM RADIO], then press the button to confirm.

The previous station is displayed.



- 2 Press the , button to select your desired station.



- 3 To change STEREO/MONO
Press the button to change Stereo or Mono.

The station is changed to stereo or mono.



Note

- In areas where the signal is weak, some channels may be unavailable, or reception may be poor.



*FM RADIO

* Only for models including FM Radio function

Searching for a FM radio frequency - Manual Scan



- 1 If PRESET is displayed, first press the button to exit PRESET mode.
Press the , button to select your desired station.



- 1 If PRESET is displayed, first press the button to exit PRESET mode.
To automatically locate a station press and hold the , button.

The player will quickly scan through each frequency and stop at the next station that can be tuned in.



Note

- While in Preset mode, auto scan functions are not available.



*FM RADIO * Only for models including FM Radio function

Saving an FM Radio frequency - Manually



1 If PRESET is displayed, first press the button to exit PRESET mode.

Press the , button to select your desired station.

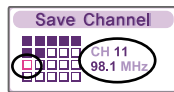
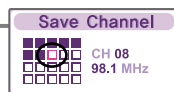


2 Press the button to display Save Channel screen.

Press the , , , button to select your desired channel number.



: Saved : not used



3 Press the button to save.

To exit the Save Channel screen, press the button.



Note

- Up to 20 stations can be saved.



*FM RADIO * Only for models including FM Radio function

Saving an FM Radio frequency - Automatically



1 If PRESET is displayed, first press the button to exit PRESET mode.

Press and hold the button to automatically select stations and save them in sequential order.



Selecting preset memory



1 If PRESET is not displayed, first press the button to enter PRESET mode.

Press the , button to select your desired channel.



Note

- When the player does not have any preset stations, EMPTY will be displayed at Preset mode, then fade out.

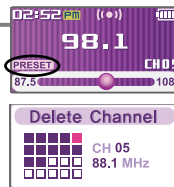


*FM RADIO * Only for models including FM Radio function

Deleting a channel



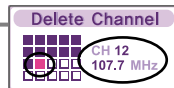
- 1 If PRESET is not displayed, first press the button to enter PRESET mode. Press the A-B button to display Delete Channel screen.



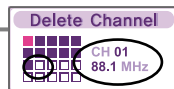
- 2 Select the channel to delete by using the , , , button.

You can delete only saved channel.

- : Saved channel : Selected channel
- : not used channel



- 3 Press the A-B button to delete selected channel. Press the button to exit Delete Channel screen.



Note

- When the player does not have any preset stations, EMPTY will be displayed when pressing the button.



RECORDING

To record *FM station * Only for models including FM Radio function



- 1 Press and hold the button to display function mode screen. Select the [FM RADIO] by using the , button, then press button.



- 2 Press the button during FM reception. The station will be recorded.
Press button to pause the recording process.
Press button again to restart recording.



- 3 Press the button again to stop recording. The recorded file is saved.



Note




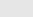
- The recorded file is saved as TMMDDXXX.MP3 in the RECORD folder.
(T:Tuner, MM:Month, DD:day, XXX:sequential number)
- Volume can not be controlled while recording.
- You can adjust recording quality at the SETTINGS-RECORDING-FM SETTING.(Refer to page 48)



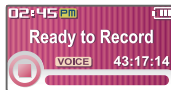
RECORDING



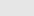
Recording voice




- 1 Press and hold the  button to display function mode screen.
Select the [RECORDING] by using the ,  button, then press  button.

The recording standby screen is displayed.



- 2 Press the  button to begin recording.
Press  button to pause the recording process.
Press  button again to restart recording.



- 3 Press the  button to stop recording.
The recorded file is saved and then the recording standby screen is displayed.



Note

- The recorded file is saved as VMMDDXXX.MP3 in the VOICE folder.
(V:Voice, MM:Month, DD:day, XXX:sequential number)
- Volume can not be controlled while recording.
- You can adjust recording quality at the SETTINGS-RECORDING-VOICE SETTING. (Refer to page 48)



RECORDING





Note for recording

The recording will be stop if






- the amount of recorded data exceeds the capacity.
- the battery is low.

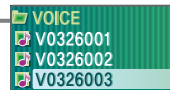
To play a recorded file



- 1 Press and hold the  button to display function mode screen.
Select the [BROWSER] by using the ,  button, then press  button.



- 2 Select a recorded file in the RECORD or VOICE folder by using the , , ,  button, then press  button.



The selected file will begin playing back.

Useful features



Chapter

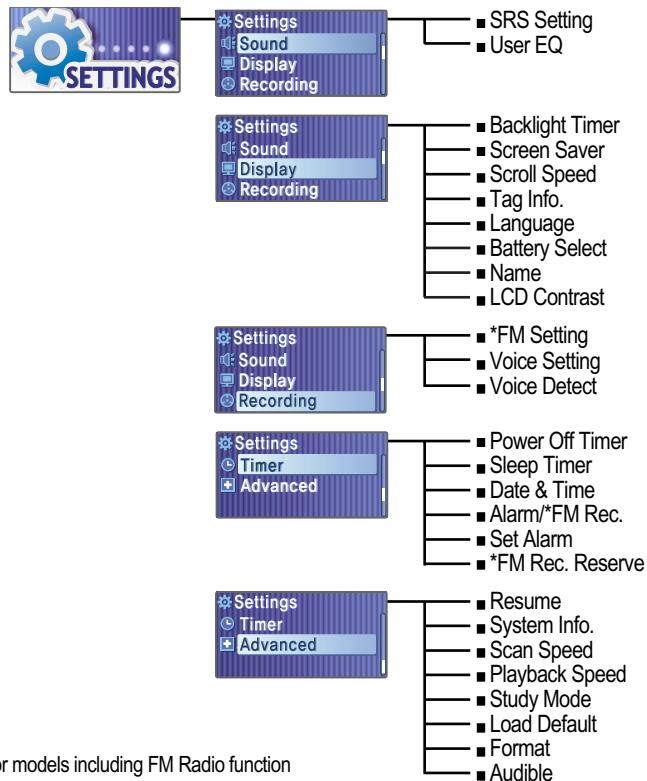
4

Menu configuration	39
Menu operation	40
Enter Settings Menu	40
Enter Sub Menu	40
Set the menu functions	41
Exit sub menu	41
Customizing the function settings	42
Sound	42
Display	43
Recording	48
Timer	50
Advanced	53
Listening to Audible™ files	57
What is Audible™ ?	57
Transferring Audible™ files	57
Sections	57
Bookmarks	58



Menu configuration

- Functions are subject to change with different firmware versions.
- Users can configure their own settings.



* Only for models including FM Radio function



Menu operation

Enter Settings Menu



1

Press and hold the button to display the Mode screen.
Press the , button to select [SETTINGS] mode.



2

Press the button to display the Settings screen.
Press the , button to move the Settings menu.

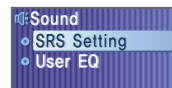


Enter Sub Menu



1

Press the button to enter the sub menu screen.



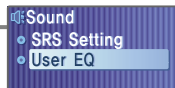


Menu operation

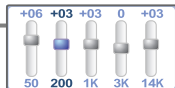
Set the menu functions



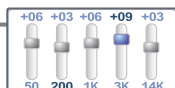
1 Press the +, - button to select sub menu.



2 Press the ⚙ button to enter Sub Menu setting screen.



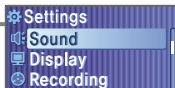
3 You can set, cancel or change sub menu by pressing the ⏮, ⏭, +, -, ⚙ button.



Exit sub menu



1 Press the ►/■ button to exit sub menu.



Customizing the function settings (Menu)

Sound

1. SRS Setting

Sets the 3D sound effect. SRS, FOCUS, TruBass, and Boost are available.

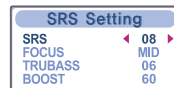
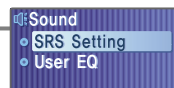
SRS : Adjust the SRS value.

FOCUS : Adjust the sound resolution value.

TRUBASS : Adjust the TruBass value.

BOOST : Adjust the sound boost value.

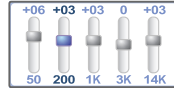
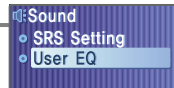
Use proper boost value depends on the earphones or headphone characteristics.



2. User EQ

You can adjust the sound to your preference.

There are 5 band frequency steps, set from <-15dB> ~ <+15dB> by 1dB increments.





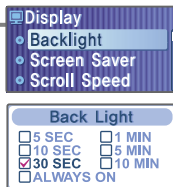
Customizing the function settings (Menu)

Display

1. Backlight

You can adjust the time that the Backlight stays on.

The Backlight can be set to: <5 SEC>, <10 SEC>, <30 SEC>, <1 MIN>, <5 MIN>, <10 MIN> or <ALWAYS ON>.



2. Screen Saver

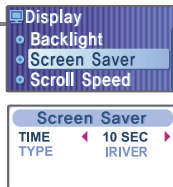
Automatically display screen saver after a selected time at playback mode.

The TIME can be set to :

<OFF>, <10 SEC>, <30 SEC>, <1 MIN>, or <3 MIN> .

The TYPE can be set to :

<IRIVER>, <SPECTRUM> or <WAVEFORM>.



Customizing the function settings (Menu)

Display

3. Scroll Speed

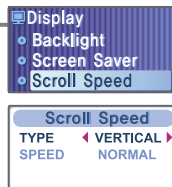
Select scroll type and speed of the current title playback information.

The scroll type can be set to :

<VERTICAL> or <HORIZONTAL>.

The scroll speed can be set to :

<SLOW>, <NORMAL> or <FAST>.



4. Tag Info.

You can select to display the information of music file by using lyrics or Tag.

You can set to <ON>, <CAPTION OFF> or <OFF>.

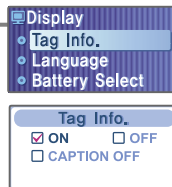
ON : Display lyrics or Tag information.

(Displayed as lyrics, Tag information or file name order)

CAPTION OFF : Display Tag information.

(Lyrics function does not activate)

OFF : Display file name of music file.





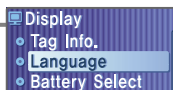
Customizing the function settings (Menu)

Display

5. Language

Select the language to display the file name, lyrics and Tag information.

Support 40 languages.

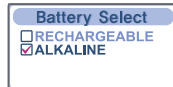


6. Battery Select

Select the current battery.

You can set <RECHARGEABLE> or <ALKALINE>.

The player will manage the battery indicator icon to better match the usage level.



Customizing the function settings (Menu)

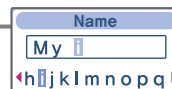
Display

7. Name

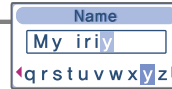
You can input your name or custom text.



1 Select the character by using ◀◀, ▶▶ button and press ⚙ button to input the character.



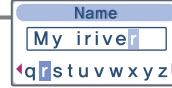
2 To move the cursor in the name window, use +, - button.



3 To delete the character, press ● button.
To scroll between English and your preferred language, use A-B button.



4 Press and hold ⚙ button to save and exit.





Customizing the function settings (Menu)

Display

8. LCD Contrast

Adjust the LCD screen contrast.

The LCD contrast can be adjust from <-10> to <+10>.



Customizing the function settings (Menu)

Recording

1. *FM Setting

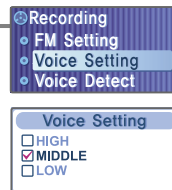
You can set recording quality (<HIGH>, <MIDDLE> or <LOW>) when recording FM.

* Only for models including FM Radio function



2. Voice Setting

You can set recording quality (<HIGH>, <MIDDLE> or <LOW>) when recording voice.





Customizing the function settings (Menu)

Recording

3. Voice Detect

The voice recording mode will automatically pause during silence. This is useful for recording over a long period of time to save memory.

LEVEL : Set the relative level of sound needed to activate the recorder. (<OFF>, <01>, <02>, <03>, <04> or <05>)

TIME(SEC) : Set the number of seconds of silence to record before pausing. (<OFF>, <01>, <02>, <03>, <05> or <10>)



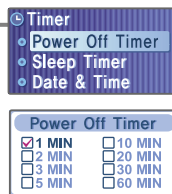
Customizing the function settings (Menu)

Timer

1. Power Off Timer

Automatically turns the power off at the stop mode.

Time range can be set from <1 MIN>, <2 MIN>, <3 MIN>, <5 MIN>, <10 MIN>, <20 MIN>, <30 MIN> or <60 MIN>.

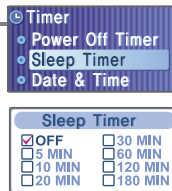


2. Sleep Timer

Automatically turns the power off after a fixed time.

Time range can be set from <OFF>, <5 MIN>, <10 MIN>, <20 MIN>, <30 MIN>, <60MIN>, <120 MIN> or <180 MIN>.

OFF : Sleep timer function does not activate.





Customizing the function settings (Menu)

Timer

3. Date & Time

Set the current date and time.



4. Alarm/*FM Rec.

OFF : The Alarm and FM Record functions are disabled and the player will not power on at either indicated time.

ALARM : At the time indicated in the "Set Alarm" setting the player will power on and begin music playback.

***FM RECORDING** : At the time indicated in the "FM Rec. Reserve" setting the player will power on and begin recording from the selected radio station.

* Only for models including FM Radio function

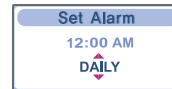


Customizing the function settings (Menu)

Timer

5. Set Alarm

Set the alarm time.



6. *FM Rec. Reserve

Set the time and station to be recorded.

* Only for models including FM Radio function



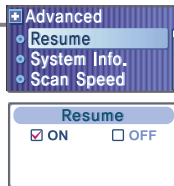


Customizing the function settings (Menu)

Advanced

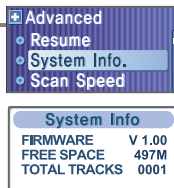
1. Resume

ON : Playback will resume from the previous location in a song when the player is stopped or powered off.
OFF : Playback begins from the first track after the player is stopped or powered off.



2. System Info.

You can check the firmware version information, free space memory and total number of tracks.



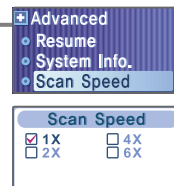
Customizing the function settings (Menu)

Advanced

3. Scan Speed

Adjust the speed of FF/RW(fast-forward/fast-rewind).

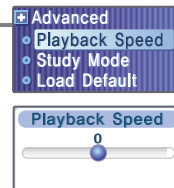
The Scan Speed can be set from <1X>, <2X>, <4X> or <6X>.



4. Playback Speed

Adjust the speed of playback.

The Playback Speed can be set from <-5 > to <+5>.





Customizing the function settings (Menu)

Advanced

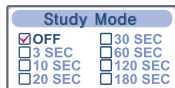
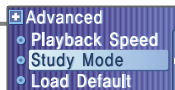
5. Study Mode

While playing, press and hold **⏮**, **⏭** button will skip the set time ahead or current track .

Time range can be set from <OFF>, <3 SEC>, <10 SEC>, <20 SEC>, <30 SEC>, <60 SEC>, <120 SEC> or <180 SEC>.

When the Study Mode is set , **⏮** icon will be displayed.

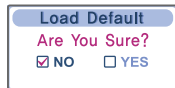
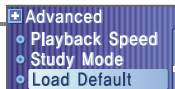
OFF : Study Mode function does not activate.



6. Load Default

Reset menus to the original factory settings.

■ When the Load Default is done, the player will be rebooted automatically.



Customizing the function settings (Menu)

Advanced

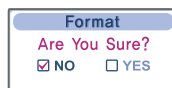
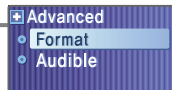
7. Format

Memory is formatted and all saved files are deleted.

Before formatting can begin, you must backup all data stored on the player.

Care must be taken as formatted files can not be recovered.

■ When the Format is done, the player will be rebooted automatically.

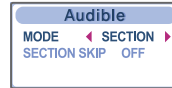


8. Audible™

Changes Audible Mode, and set Section Skip ON/OFF.

- Audible Mode can be either <Section> or <Bookmark>.
- When Section Skip is ON, pressing and holding **⏮**, **⏭** button while playing Audible™ file will skip to the previous or next section of the current track.

Please refer to "Using Audible™ files" section for more details.





Listening to Audible™ files

What is Audible™ ?

Audible™ is one of the leading suppliers of spoken audio entertainment and educational programming. Audible™ offers over 80,000 hours of audio programs. For more information, please visit Audible.com® at <http://www.audible.com>

Transferring Audible™ files

To transfer Audible™ files to T10, you should use AudibleManager. Please visit Audible.com® at <http://www.audible.com>, in the Device Center.

Sections

Each Audible™ file is broken into segments called sections. Configure “Mode” as “Section” in the Settings → Advanced → Audible menu to browse for the sections while listening to Audible™ file. If you configure “SECTION SKIP” as “ON” in the Settings → Advanced menu, clicking and holding ⏮, ⏭ will skip to the previous or next section of the current Audible™ file.

- Click and hold ⚙ to display section list. Click +, - to browse for the section you want to listen to, and click ⚙ to play the section.
- Click A-B to escape from the section list.



Listening to Audible™ files

Bookmarks

You can add bookmarks in each Audible™ file, so that you can always return to your favorite part.

Configure “Mode” as “Bookmark” in the Settings → Advanced → Audible menu to browse for the bookmarks while listening to Audible™ file.

- While listening to Audible™ file, click ⚙ to add a bookmark.
- Click and hold ⚙ to display bookmark list. Click ⏮, ⏭ to delete a bookmark, and click and hold ⏮, ⏭ to delete all bookmarks.
- Click +, - to browse for the bookmark you want to listen to, and click ⚙ to play from the bookmark.
- Click A-B to escape from the bookmark list.

You can add up to 10 bookmarks in each Audible™ file.

iriver www.iriveramerica.com

Chapter

5

Firmware Upgrade	61
Troubleshooting	62
Specification	63
Safety Information	64
FCC Certification	65



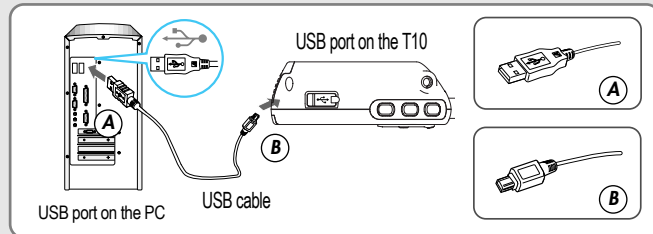
Firmware Upgrade

To update the firmware in T10, your computer need to be connected to the internet.

Firmware Upgrade

1 Please download the iriver Firmware Updater from www.iriveramerica.com/support/mtpupdate and unzip the file. Then you will see the shortcut to the updater on your computer. Double click the icon to start the iriver Firmware Updater.

2 Connect your device to the computer.



3 Follow the on-screen instructions to update the firmware on your T10.

4 When the update is complete, disconnect T10 from the computer. T10 may be rebooted several times after it is disconnected.

Note

- Before upgrading the firmware, check the condition of the battery. The firmware upgrade may fail due to battery power shortage.
- Do not turn the player off until the upgrade is completed.



Troubleshooting

Should any problem persist after you have checked these symptoms, consult your iriver dealer or contact support at www.iriveramerica.com.

Trouble	Solution
No Power.	<ul style="list-style-type: none"> ■ Check whether the HOLD switch on the player is ON (Switch to OFF position) ■ Check the condition of the battery. Insert a fresh battery.
No sound or distortion during playback.	<ul style="list-style-type: none"> ■ Check whether VOLUME is set to "0". ■ Firmly connect the earphones. ■ Check whether the plug is dirty. Clean the plug with a dry and soft cloth. ■ Corrupted MP3 or WMA files may make a static noise and the sound may cut off. Listen to your files on the PC to see if they are corrupted.
Characters in LCD are corrupted.	<ul style="list-style-type: none"> ■ Check out SETTINGS → Display → Language and confirm whether the right language has been selected. (Refer to page 45)
Poor *FM Reception.	<ul style="list-style-type: none"> ■ Adjust the position of the player and earphones. ■ Turn off the power of other electric devices near the player. ■ The Earphone cord functions as the antenna, they must be plugged in for best reception.
Failed download of MP3 file	<ul style="list-style-type: none"> ■ Check the condition of the battery. ■ Check the connection between your computer and the player to ensure that the cable is secure. ■ Check whether the player's memory is full.
The title saved in T10 are not played.	<ul style="list-style-type: none"> ■ T10 supports up to 700 music files and 700 folders.

* Only for models including FM Radio function



Specifications

Memory Capacity		1 GB*	2 GB*
Model No.		T10 1GB	T10 2GB
Category	Item	Specifications	
Audio	Frequency range	20 Hz ~ 20 KHz	
	Headphone Output	(L)15 mW + (R)15 mW (16 Ohm) max. Volume	
	S/N ratio	90 dB(MP3)	
**FM Tuner	FM Frequency range	87.5 MHz ~ 108 MHz	
	S/N ratio	60 dB	
	Antenna	Headphone/Earphone-Cord Antenna	
File Playback	File Type	MPEG 1/2/2.5 Layer 3, WMA, OGG, ASF	
	Bit Rate	8 Kbps ~ 320 Kbps	
	Tag Info	ID3 V1, ID3 V2.2.0, ID3 V2.3.0, ID3 V2.4.0	
	Max. Playtime	Approx. 53 hours (128 Kbps, MP3, Vol 20, LCD off, EQ Normal, Alkaline "AA" 2400mAh)	
Recording	Max. Recording time (@32Kbps)	1 GB	2 GB
		Approx. 72 hours	Approx. 144 hours
Display	LCD	65,000 color 1.01 inch CSTN	
	Language	40 languages	
General	Dimension	85.8 (W) x 40.8 (D) x 29.4 (H) mm	
	Weight	49 g (without battery)	
	Battery	AA Type Alkaline battery 1EA	
	Operational Temperature	-5 °C ~ 40 °C	

* 1 MB = 1,000,000 Bytes / 1 GB = 1,000 MB = 1,000,000,000 Bytes

Not all memory available for storage. Memory is not expandable.

** Only for models including FM Radio function



Safety Information

For Safety

- Avoid dropping or impacting the player.
The player is designed to operate while walking or running, but dropping or excessively impacting the player may cause damage.
- Avoid contacting the player with water.
Damage to the internal parts of the player may occur if the player comes into contact with water. If your player gets wet, dry the outside with a soft cloth as soon as possible.
- Do not leave the player in a location near heat sources, or in a place subject to direct sunlight, excessive dust or sand, moisture, rain, mechanical shock, unlevelled surface, or in a car with its windows closed.
- Remove the battery if player is unused for long periods of time.
Battery left in the player for a long time can corrode and damage the device.
- All data stored on this device may be erased by an excessive impact, a thunder or an electricity failure, etc. on the device.
The manufacturer does not warrant and will not be held responsible in any way for damages or loss of data, including loss of data stored on this device, resulting from an excessive impact, a thunder or an electricity failure. You will be responsible for safe-guarding all data stored on this device.

On headphones and earphones

- Road Safety
Do not use headphones/earphones while driving, cycling, or operating any motorized vehicle. It may create a traffic hazard and is illegal in some areas. It can also be potentially dangerous to play your headset at high volume while walking, especially at pedestrian crossings. You should exercise extreme caution or discontinue use in potentially hazardous situations.
- Preventing hearing damage
Avoid using headphones/earphones at high volume. Hearing experts advise against continuously loud and extended play. If you experience a ringing in your ears, reduce volume or discontinue use.
- Consideration for others
Keep the volume at a moderate level. This will allow you to hear outside sound and to be considerate of the people around you.



THIS DEVICE COMPLIES WITH PART 15 OF THE FCC RULES. OPERATION IS SUBJECT TO THE FOLLOWING TWO CONDITIONS:

- (1) THIS DEVICE MAY NOT CAUSE HARMFUL INTERFERENCE, AND**
- (2) THIS DEVICE MUST ACCEPT ANY INTERFERENCE, RECEIVED, INCLUDING INTERFERENCE THAT MAY CAUSE UNDESIRED OPERATION.**

Note : This equipment has been tested and found to comply with the limits for a Class B digital device, pursuant to part 15 of the FCC Rules. These limits are designed to provide reasonable protection against harmful interference in a residential installation.

This equipment generates, uses and can radiate radio frequency energy and, if not installed and used in accordance with the instructions, may cause harmful interference to radio communications. However, there is no guarantee that interference will not occur in a particular installation. If this equipment does cause harmful interference to radio or television reception, which can be determined by turning the equipment off and on, the user is encouraged to try to correct the interference by one or more of the following measures :

- Reorient or relocate the receiving antenna.
- Increase the separation between the equipment and receiver.
- Connect the equipment into an outlet on a circuit different from that to which the receiver is connected.
- Consult the dealer or an experienced radio/TV technician for help.

NOTE : THE MANUFACTURER IS NOT RESPONSIBLE FOR ANY RADIO OR TV INTERFERENCE CAUSED BY UNAUTHORIZED MODIFICATIONS TO THIS EQUIPMENT. SUCH MODIFICATIONS COULD VOID THE USER'S AUTHORITY TO OPERATE THE EQUIPMENT.



Memo



Memo