

**OLYMPUS®**

DIGITAL CAMERA

# Stylus 600

## *μ* DIGITAL 600

### Basic Manual

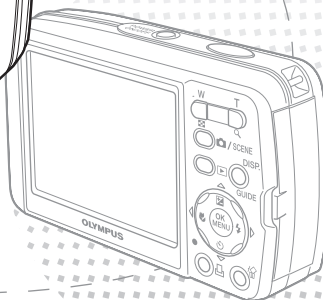
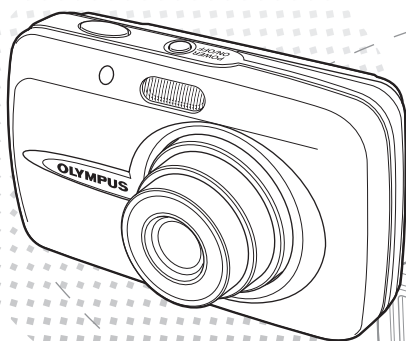
ENGLISH 2

FRANÇAIS 28

ESPAÑOL 54

DEUTSCH 80

РУССКИЙ 106

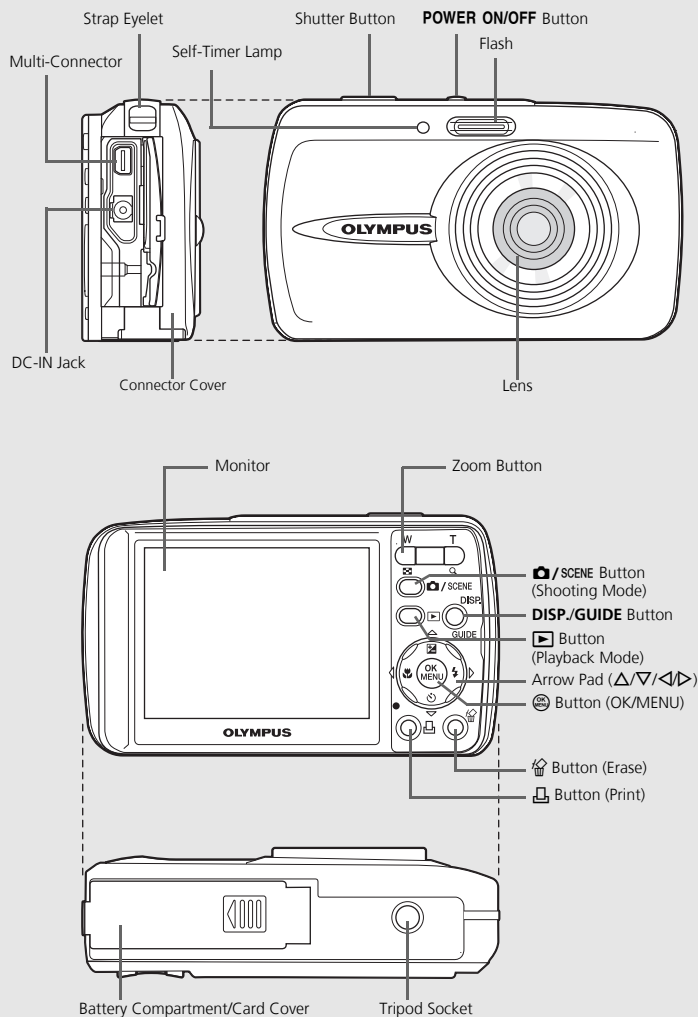


# Table of Contents

<b>CAMERA DIAGRAM .....</b>	<b>3</b>
<b>BEFORE YOU BEGIN .....</b>	<b>4</b>
<b>GETTING STARTED .....</b>	<b>5</b>
Step 1 Get Started .....	5
Step 2 Take a Picture.....	6
Step 3 Review or Erase a Picture.....	7
Step 4 Transfer Images.....	8
<b>BASIC OPERATION .....</b>	<b>10</b>
Holding the Camera.....	10
Shooting and Playback Mode Buttons .....	10
Shooting Mode Buttons .....	11
SCENE Modes .....	12
Macro Mode .....	12
Self-Timer .....	12
Flash Modes.....	13
Power Save Feature.....	13
<b>MENUS AND SETTINGS .....</b>	<b>14</b>
Top Menu .....	14
Erase All Pictures.....	14
Select a Language .....	14
Monitor Symbols & Icons.....	15
Thumbnail (Index) Display.....	16
<b>CONNECTING THE CAMERA.....</b>	<b>17</b>
Playback on a TV.....	17
Direct Printing (PictBridge).....	18
<b>OLYMPUS Master SOFTWARE .....</b>	<b>19</b>
<b>SPECIFICATIONS.....</b>	<b>20</b>
<b>SAFETY PRECAUTIONS .....</b>	<b>22</b>

- Before using your camera, read this manual carefully to ensure correct use.
- We recommend that you take test shots to get accustomed to your camera before taking important photographs.
- Please observe the safety precautions at the end of this manual.

# CAMERA DIAGRAM



En

# BEFORE YOU BEGIN

## Gather these items (box contents)



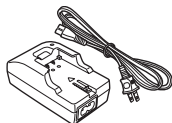
Digital Camera



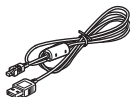
Strap



LI-12B Lithium Ion Battery



LI-10C Battery Charger



USB Cable (light gray)



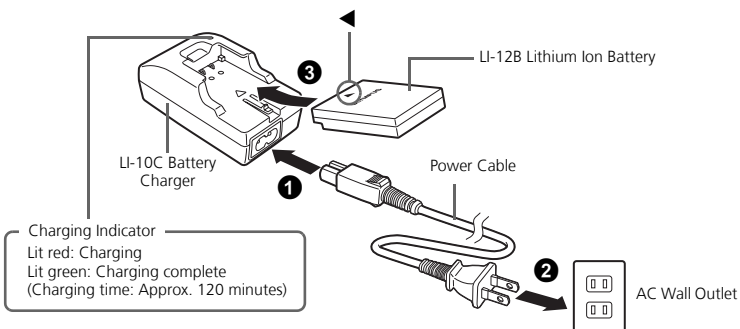
Video Cable (black)



OLYMPUS Master Software CD-ROM

Items not shown: Advanced Manual (CD-ROM), Basic Manual (this manual), warranty card. Contents may vary depending on purchase location.

## Charge the battery (recommended\*)

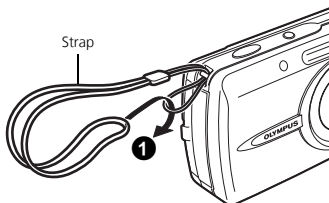


\*Battery comes partially charged.

# 1

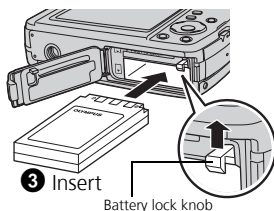
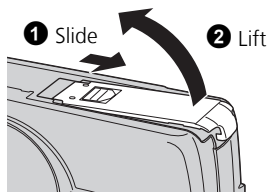
## GET STARTED

### a. Attach the strap



- Pull the strap tight so that it does not come loose.

### b. Insert the battery

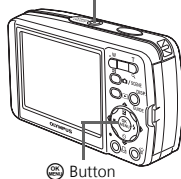


En

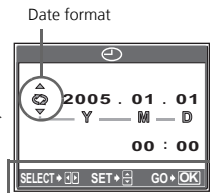
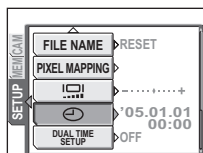
### c. Set the date and time

- 1 Press **POWER ON/OFF** button to turn the camera on.
- 2 Press **OK** to display the top menu, and select [MODE MENU] > [SETUP] > [⌚].
- 3 Press **Δ/∇** to set an item. Press **◀/▶** to select the next field.

POWER ON/OFF Button



OK Button



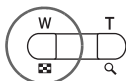
Date format

Operation guide

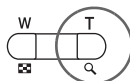
## 2 TAKE A PICTURE

### a. Zoom

Zoom Out:



Zoom In:



### b. Focus

- Using the monitor, place the AF target mark over your subject.

Green Lamp



AF Target Mark

(Pressed Halfway)



- Press and hold the shutter button halfway to lock the focus.
  - The green lamp indicates the focus is locked.

### c. Take the picture

- Press the shutter button completely to take the picture.

(Pressed Completely)

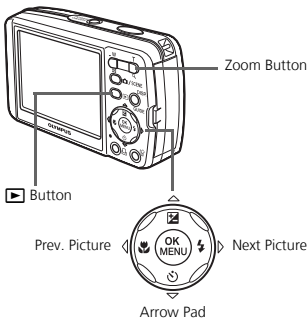


# 3

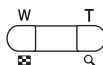
## REVIEW OR ERASE A PICTURE


### a. Press the button

- The last picture taken will be displayed.




### b. Take a closer look



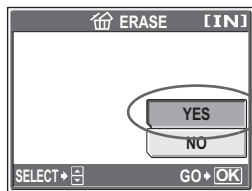
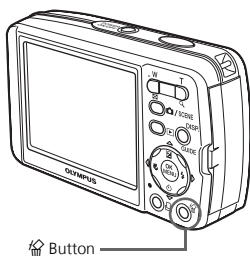
- Press T or W to zoom in or out.
- Press  to return to the original size.
- Press  $\Delta/\nabla$  or  $\triangleleft/\triangleright$  to scroll around.





Press the /SCENE button to return to shooting mode.

En

### c. To erase a picture



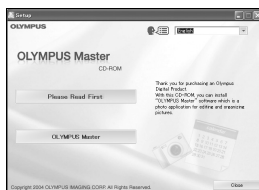
- 1 Display the picture you want to erase.
- 2 Press the  button.
- 3 Select [YES], and press .
  - The picture is permanently erased.

# 4 TRANSFER IMAGES

En

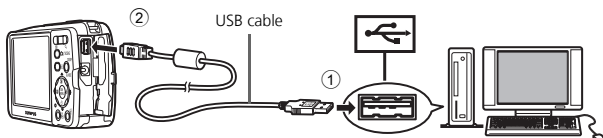
## a. Install the software


- 1 Insert the OLYMPUS Master CD-ROM.
- 2 **Windows:** Click the "OLYMPUS Master" button.  
**Macintosh:** Double-click the "Installer" icon.
- 3 Simply follow the on-screen instructions.

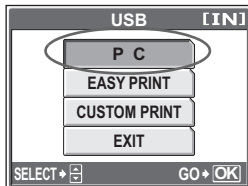


## b. Connect the camera to the computer

- 1 Connect the camera and computer using the USB cable (included).
  - The monitor will turn on automatically.



- 2 Select [PC] on the monitor, and press .

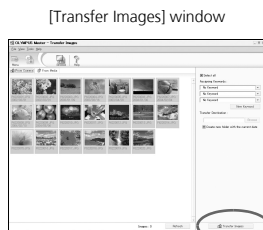


- Your PC will now recognize your camera as a removable storage drive.



## c. Transfer images to the computer

- 1 With the camera now connected, open OLYMPUS Master.
  - The [Transfer Images] window is displayed.
- 2 Select the images you want to transfer, and click the [Transfer Images] button.



[Transfer Images] button

If the [Transfer Images] window is not displayed automatically:

- a. Click the "Transfer Images" icon on the OLYMPUS Master main menu.
- b. Click the "From Camera" icon.



### Tips

- For more detailed information regarding camera setup and usage, please refer to the camera's "Advanced Manual" provided on CD-ROM.
- For more details on using the OLYMPUS Master software, please refer to the (electronic) reference manual located in the OLYMPUS Master folder on your hard drive. For additional assistance, refer to the "Help" file in the OLYMPUS Master software.

# BASIC OPERATION

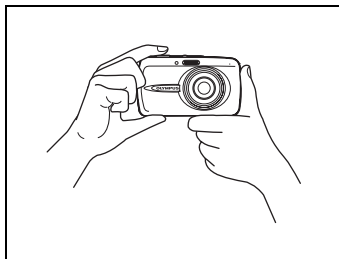
## Holding the Camera

Pictures can sometimes appear blurred as the result of moving the camera while the shutter button is being pressed.

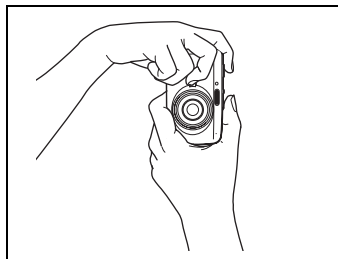
To prevent the camera from moving, hold the camera firmly with both hands while keeping your elbows at your sides. When taking pictures with the camera in the vertical position, hold the camera so that the flash is positioned above the lens. Keep your fingers and the strap away from the lens and flash.

En


Horizontal grip

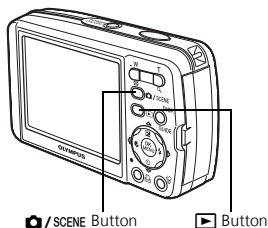


Vertical grip



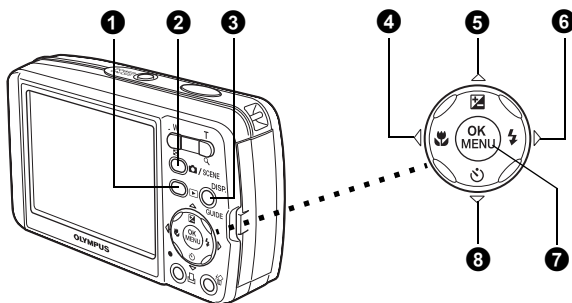
## Shooting and Playback Mode Buttons

Shooting mode is for taking pictures and adjusting shooting settings, whereas playback mode is for displaying, editing and erasing pictures you have taken. Press the  button to turn the camera on in playback mode.



## Shooting Mode Buttons

While in shooting mode, use these buttons for quick access to some of the more commonly used features.



En

### 1 button (Playback Mode)

The camera switches to playback mode.

### 2 / SCENE button (Shooting Mode)

Use this button to optimize shooting settings for a particular scene or subject.

### 3 **DISP./GUIDE** button

Press the **DISP./GUIDE** button repeatedly to display the composition guide lines and histogram.

Select a menu item, and press the **DISP./GUIDE** button to display an explanation of its function.

### 4 button (Macro Mode)

Use macro or super macro mode when taking close-up pictures such as of a flower.

### 5 button (Exposure Compensation)

Use this setting to overexpose (+) or underexpose (–) a picture.

### 6 button (Flash Mode)

Select from 4 flash modes – Auto, Red-eye reduction, Fill-in flash, or Flash off.

### 7 button (OK/MENU)

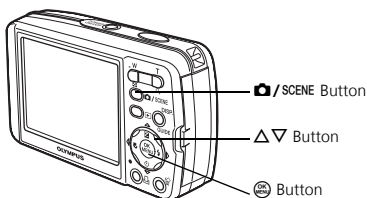
Press this button to display camera menu options (described on next pages). This button is also used to confirm selections.

### 8 button (Self-timer)

Select the self-timer to delay the shot approximately 12 seconds from when the shutter button is pressed.

## SCENE Modes

- 1 Press the / SCENE button in shooting mode.



En

- 2 Press  $\Delta/\nabla$  to select a scene mode, and press .

### Shooting Scene Modes

- PORTRAIT
- LANDSCAPE
- LANDSCAPE+PORTRAIT
- NIGHT SCENE
- NIGHT+PORTRAIT
- SPORT
- INDOOR
- CANDLE
- SELF PORTRAIT
- AVAILABLE LIGHT PORTRAIT
- SUNSET
- FIREWORKS
- MUSEUM
- CUISINE
- BEHIND GLASS
- DOCUMENTS
- AUCTION
- SHOOT & SELECT1
- SHOOT & SELECT2
- BEACH & SNOW
- UNDER WATER WIDE1
- UNDER WATER WIDE2
- UNDER WATER MACRO
- REDUCING BLUR
- MOVIE

## Macro Mode

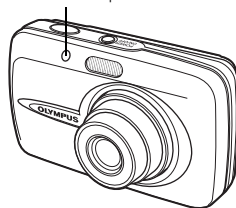
- This mode lets you take pictures as close as 20 cm/8 in. to your subject.
- Use this mode to take pictures as close as 7 cm/2.8 in. to your subject. In mode, the position of the zoom lens is fixed.

- 1 Select [] or [] by repeatedly pressing  $\triangleleft$  [].




## Self-Timer

- 1 Press  $\nabla$  [] to set [].
- 2 Press the shutter button fully to take the picture.
  - The self-timer lamp lights for approximately 10 seconds after the shutter button is pressed, then starts blinking. After blinking for approximately 2 seconds, the picture is taken.

Self-Timer Lamp



## Flash Modes




- ❶ Select the flash mode by repeatedly pressing  .
  - If not used for approximately 2 seconds, the camera applies the current settings, and the setting screen disappears.
- ❷ Press the shutter button halfway.
  - When the flash is set to fire, the  mark lights.
- ❸ Press the shutter button completely to take the picture.

### Flash working range:

W (max.): Approx. 4.0 m (13.1 ft.)

T (max.): Approx. 2.5 m (8.2 ft.)

En

Icon	Flash Mode	Description
No indication	Auto flash	The flash fires automatically in low light or backlight conditions.
	Red-eye reduction flash	The red-eye reduction flash mode significantly reduces this phenomenon by emitting pre-flashes before firing the regular flash.
	Fill-in flash	The flash fires regardless of the available light.
	Flash off	The flash does not fire even in low light conditions.

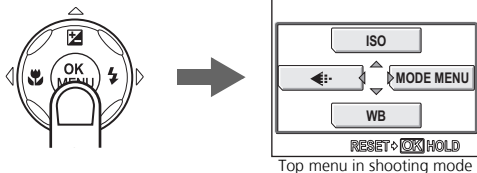
## Power Save Feature

- To save battery power, the camera automatically enters sleep mode and stops operating if not used for 3 minutes. Operate the shutter button or zoom button to reactivate the camera.
- If the camera is not operated for 15 minutes after the camera enters sleep mode, it automatically retracts the lens and turns off. To resume operation, turn on the power again.

# MENUS AND SETTINGS

## Top Menu

- 1 Press to display the camera's menu on the monitor.
- 2 Use the arrow pad (///) and to navigate and select menu items.



Top menu in shooting mode

### ISO

The higher the ISO, the higher the camera's light sensitivity and ability to shoot in low light conditions.

### Record Mode

Choose from several different image quality and resolutions.

### WB White Balance

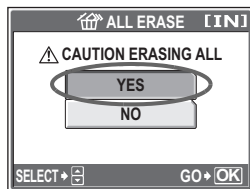
Automatically or manually balance color to compensate for varying lighting conditions.

### MODE MENU

Contains language selection, start up options, date and time, erasing all pictures, etc.

## Erase All Pictures

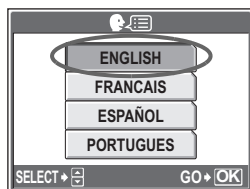
- 1 Press and select [MODE MENU] > [MEMORY (CARD)] > [ALL ERASE].
- 2 Select [YES] and press .
- All the pictures are erased.



## Select a Language

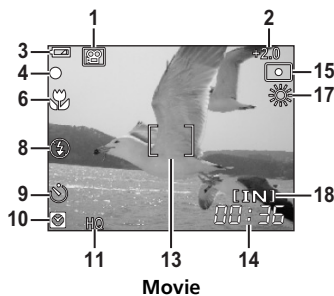
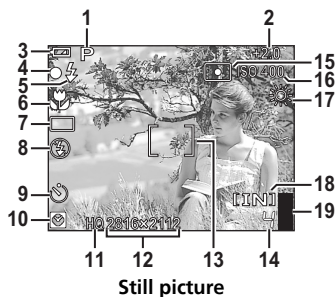
You can select a language for on-screen display. Available languages vary depending on the area where you purchased this camera.

- 1 Press to display the top menu, and select [MODE MENU] > [SETUP] > .
- 2 Select a language and press .



## Monitor Symbols & Icons

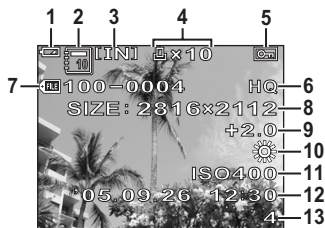
### ● Monitor – Shooting Mode



En

	Items	Indications
1	Shooting modes	P, [ ], [ ], [ ], [ ], [ ], [ ], etc.
2	Exposure compensation	-2.0 – +2.0
3	Battery check	[ ] = full power, [ ] = low power
4	Green lamp	O = Auto Focus Lock
5	Flash standby Camera movement warning Flash charge	⚡ (Lit) ⚡ (Blinks)
6	Macro mode Super macro mode	[ ] s [ ]
7	Drive	[ ], [ ], HI [ ]
8	Flash mode	[ ], [ ], [ ]
9	Self-timer	[ ]
10	Dual time	[ ]
11	Record mode	SHQ, HQ, SQ1, SQ2
12	Image size	2816 × 2112, 2560 × 1920, 640 × 480, etc.
13	AF target mark	[ ]
14	Number of storable still pictures Remaining recording time	4 00:36
15	Spot metering	[ ]
16	ISO	ISO 64 – ISO 1600
17	White balance	[ ], [ ], [ ], [ ] – [ ]
18	Current memory	[IN] (internal memory), [xD] (card)
19	Memory gauge	[ ], [ ], [ ], [ ] (maximum reached)

## ● Monitor – Playback mode



Still picture



Movie

En

	Items	Indications
1	Battery check	= full power,  = low power
2	Album	
3	Current memory	[IN] (internal memory), [xD] (card)
4	Print reservation/Number of prints Movie	x10
5	Protect	
6	Record mode	SHQ, HQ, SQ1, SQ2
7	File number	100-0004
8	Image size	2816 × 2112, 2560 × 1920, 640 × 480, etc.
9	Exposure compensation	-2.0 – +2.0
10	White balance	WB AUTO, , , ,  –
11	ISO	ISO 64 – ISO 1600
12	Date and time	05.09.26 12:30
13	Number of frames Elapsed time/Total recording time	4 00:00/00:36

## Thumbnail (Index) Display

This function lets you show several pictures at the same time on the monitor when reviewing pictures.

- 1 Press the zoom button toward W () to switch to the thumbnail (index) display.

- Use the arrow pad (, , , ) to select a picture and press to display it in single frame playback.
- Press the zoom button to display the pictures in 4, 9, 16 or 25 frames.



Index display

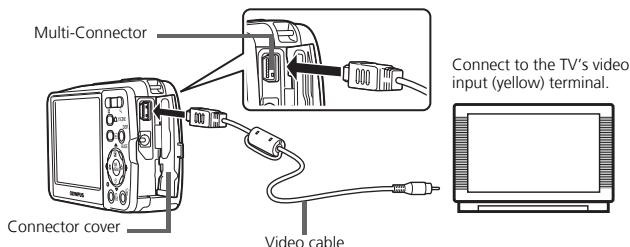


## CONNECTING THE CAMERA


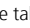
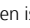
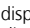
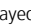
### Playback on a TV

Use the video cable provided with the camera to playback recorded images on your TV. Both still pictures and movies can be played back.

- 1 Make sure that the TV and camera are turned off. Connect the multi-connector on the camera to the video input terminal on the TV using the video cable.



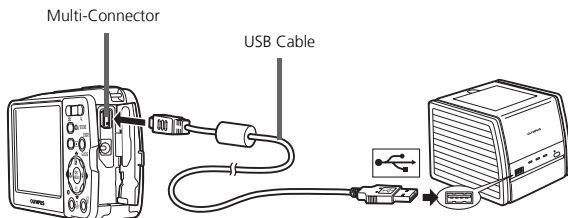
En

- 2 Turn the TV on and set it to the video input mode.
  - For details of switching to video input, refer to your TV's instruction manual.
- 3 Press the  button to turn the camera on.
  - The last picture taken is displayed on the TV. Use the arrow pad (, , , ) to select the picture you want to display.

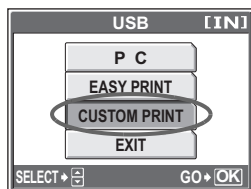
## Direct Printing (PictBridge)

Using the provided USB cable, you may connect your camera directly to a PictBridge compatible printer such as the Olympus P-11 to make prints.

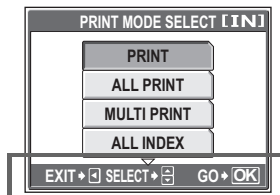
- 1 Connect one end of the provided USB cable into the camera's multi-connector and the other end into the printer's USB connector.



- 2 Select [CUSTOM PRINT] on the camera's monitor and press .
  - After the [ONE MOMENT] screen disappears, the camera and printer are connected.
  - Select [EASY PRINT] to make just one print of the selected picture quickly.



- 3 Use the arrow pad (, , , ) to select pictures and make prints.



Follow the operation guide displayed here.

# OLYMPUS Master SOFTWARE

OLYMPUS Master Software: Use this software to download pictures from the camera, view, organize, retouch, e-mail and print your digital pictures and movies and more! This CD also contains the complete software reference manual in Adobe Acrobat (PDF) format.



## ● System Requirements

En

OS	Windows 98SE/Me/2000 Professional/XP or Mac OS X (10.2 or later)
CPU	Pentium III 500 MHz/Power PC G3, or faster
RAM	128 MB or more (256 MB or more recommended)
Hard Disk	300 MB or more free space
Connection	USB port
Monitor	1024 × 768 pixels resolution or more with minimum 65,536 colors (Windows), 32,000 colors (Macintosh)

**For the latest support information, visit the Olympus website**  
(<http://www.olympus.com/digital>)

## ● Upgrade (OLYMPUS Master Plus)

In addition to the functions in OLYMPUS Master, the OLYMPUS Master Plus features movie editing, album printing, contact sheet printing, HTML album, free stitch panorama, CD/DVD writing functions, and a lot more, allowing you to greatly expand your digital photograph capabilities.

You can upgrade your software to OLYMPUS Master Plus via the Internet. You need to have OLYMPUS Master installed in a computer with an Internet connection.



## User Registration

Register your camera when you install OLYMPUS Master to activate your warranty, receive notifications of software and camera firmware updates, and more.

# SPECIFICATIONS

## ● Camera

- Product type : Digital camera (for shooting and displaying)
- Recording system : Digital recording, JPEG (in accordance with Design rule for Camera File system (DCF))
- Still pictures : Exif 2.2, Digital Print Order Format (DPOF), PRINT Image Matching III, PictBridge
- Applicable standards : QuickTime Motion JPEG
- Movie : Internal memory
- Memory : xD-Picture Card (16 MB to 1GB)

No. of storable pictures when using the internal memory

Still pictures

Record mode	Image size	Number of storable still pictures
SHQ	2816 × 2112	2
HQ		5
SQ1	2560 × 1920	6
	2272 × 1704	8
	2048 × 1536	9
	1600 × 1200	12
SQ2	1280 × 960	18
	1024 × 768	28
	640 × 480	46

Movie

Record mode	Image size	Remaining recording time
SHQ	640 × 480 (15 frames/sec.)	6 sec.
HQ	320 × 240 (15 frames/sec.)	20 sec.
SQ	160 × 120 (15 frames/sec.)	54 sec.

- No. of pictures when fully charged : Approx. 330 (based on CIPA battery life measurement standards)
- No. of effective pixels : 6,000,000 pixels
- Image pickup device : 1/2.5" CCD (primary color filter), 6,400,000 pixels (gross)
- Lens : Olympus lens 5.8 to 17.4 mm, f3.1 to 5.2 (equivalent to 35 to 105 mm on a 35 mm camera)
- Photometric system : Digital ESP metering, spot metering system
- Shutter speed : 4 to 1/1000 sec.
- Shooting range : 0.5 m (1.6 ft.) to ∞ (W/T) (normal)  
0.2 m (0.7 ft.) to ∞ (W/T) (macro mode)  
0.07 m (2.8 in.) to 0.5 m (19.7 in.) (T only) (super macro mode)
- Monitor : 2.5" TFT color LCD display, 115,000 pixels

Flash charge time	: Approx. 6 sec. (for full flash discharge at room temperature using a new fully charged battery)
Outer connector	: DC-IN jack USB connector/VIDEO OUT jack (multi-connector)
Automatic calendar system	: 2000 up to 2099
Water resistance	
Type	: Equivalent to IEC Standard publication 529 IPX4 (under OLYMPUS test conditions)
Meaning	: Camera is not damaged by water spray from any direction.
Operating environment	
Temperature	: 0°C to 40°C (32°F to 104°F) (operation)/ -20°C to 60°C (-4°F to 140°F) (storage)
Humidity	: 30% to 90% (operation)/10% to 90% (storage)
Power supply	: One Olympus lithium ion battery (LI-12B) or Olympus AC adapter
Dimensions	: 97 mm (W) × 55 mm (H) × 26.5 mm (D) (3.8 × 2.2 × 1.1 in.) excluding protrusions
Weight	: 140 g (4.9 oz) without battery and card

En

## ● **Lithium ion battery (LI-12B)**

Product type	: Lithium ion rechargeable battery
Standard voltage	: DC 3.7 V
Standard capacity	: 1230 mAh
Battery life	: Approx. 300 full recharges (varies on usage)
Operating environment	
Temperature	: 0°C to 40°C (32°F to 104°F) (charging)/ -10°C to 60°C (14°F to 140°F) (operation)/ 0°C to 30°C (32°F to 86°F) (storage)
Dimensions	: 32 × 46 × 10 mm (1.3 × 1.8 × 0.4 in.)
Weight	: Approx. 30 g (1 oz)

## ● **Battery charger (LI-10C)**

Power requirements	: AC 100 to 240 V (50 to 60 Hz) 9 VA (100 V) to 16 VA (240 V)
Output	: DC 4.2 V, 860 mA
Charging time	: Approx. 120 min.
Operating environment	
Temperature	: 0°C to 40°C (32°F to 104°F) (operation)/ -20°C to 60°C (-4°F to 140°F) (storage)
Dimensions	: 46 × 36.5 × 85 mm (1.8 × 1.4 × 3.3 in.)
Weight	: Approx. 70 g (2.3 oz)

Design and specifications subject to change without notice.

# SAFETY PRECAUTIONS

## Weatherproof feature

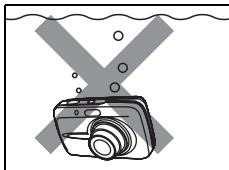
This camera is weatherproof, but it cannot be used underwater. Olympus will not assume any responsibility for malfunction of the camera caused by water getting inside as a result of misuse by the user. The camera is weatherproof and is not damaged by water spray from any direction.

Observe the following precautions when using the camera.

En



- Do not wash the camera with water.

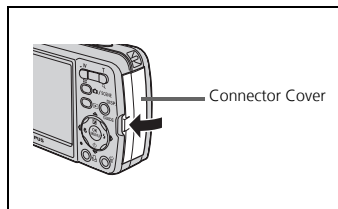
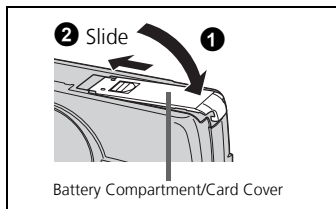


- Do not drop the camera into water.



- Do not take pictures underwater.

**Water may get inside the camera if the battery compartment/card cover or connector cover are not firmly closed.**



- If the camera gets splashed, wipe the water off as soon as possible with a dry cloth.
- The rechargeable battery and other camera accessories are not weatherproof.

**CAUTION**

**RISK OF ELECTRICAL SHOCK  
DO NOT OPEN**



**CAUTION:** TO REDUCE THE RISK OF ELECTRICAL SHOCK, DO NOT REMOVE COVER (OR BACK). NO USER-SERVICEABLE PARTS INSIDE. REFER SERVICING TO QUALIFIED OLYMPUS SERVICE PERSONNEL.



An exclamation mark enclosed in a triangle alerts you to important operating and maintenance instructions in the documentation provided with the product.

**DANGER**

If the product is used without observing the information given under this symbol, serious injury or death may result.

**WARNINGS**

If the product is used without observing the information given under this symbol, injury or death may result.

**CAUTION**

If the product is used without observing the information given under this symbol, minor personal injury, damage to the equipment, or loss of valuable data may result.

**WARNING!**

**TO AVOID THE RISK OF FIRE OR ELECTRICAL SHOCK, NEVER DISASSEMBLE, EXPOSE THIS PRODUCT TO WATER OR OPERATE IN A HIGH HUMIDITY ENVIRONMENT.**

## General Precautions

**Read All Instructions** — Before you use the product, read all operating instructions. Save all manuals and documentation for future reference.

**Cleaning** — Always unplug this product from the wall outlet before cleaning. Use only a damp cloth for cleaning. Never use any type of liquid or aerosol cleaner, or any type of organic solvent to clean this product.

**Attachments** — For your safety, and to avoid damaging the product, use only accessories recommended by Olympus.

**Water and Moisture** — For precautions on products with weatherproof designs, read the weatherproofing sections.

**Location** — To avoid damage to the product, mount the product securely on a stable tripod, stand, or bracket.

**Power Source** — Connect this product only to the power source described on the product label.

**Lightning** — If a lightning storm occurs while using an AC adapter, remove it from the wall outlet immediately.

**Foreign Objects** — To avoid personal injury, never insert a metal object into the product.

**Heat** — Never use or store this product near any heat source such as a radiator, heat register, stove, or any type of equipment or appliance that generates heat, including stereo amplifiers.

## Handling the Camera



### WARNING

- **Do not use the camera near flammable or explosive gases.**
- **Do not use the flash on people (infants, small children, etc.) at close range.**
  - You must be at least 1 m (3 ft.) away from the faces of your subjects. Firing the flash too close to the subject's eyes could cause a momentary loss of vision.
- **Keep young children and infants away from the camera.**
  - Always use and store the camera out of the reach of young children and infants to prevent the following dangerous situations which could cause serious injury:
    - Becoming entangled in the camera strap, causing strangulation.
    - Accidentally swallowing the battery, cards or other small parts.
    - Accidentally firing the flash into their own eyes or those of another child.
    - Accidentally being injured by the moving parts of the camera.
- **Do not look at the sun or strong lights with the camera.**
- **Do not use or store the camera in dusty or humid places.**
- **Do not cover the flash with a hand while firing.**



### CAUTION

- **Stop using the camera immediately if you notice any unusual odors, noise, or smoke around it.**
  - Never remove the batteries with bare hands, which may cause a fire or burn your hands.
- **Never hold or operate the camera with wet hands.**
- **Do not leave the camera in places where it may be subject to extremely high temperatures.**
  - Doing so may cause parts to deteriorate and, in some circumstances, cause the camera to catch fire. Do not use the charger or AC adapter if it is covered (such as a blanket). This could cause overheating, resulting in fire.
- **Handle the camera with care to avoid getting a low-temperature burn.**
  - When the camera contains metal parts, overheating can result in a low-temperature burn. Pay attention to the following:
    - When used for a long period, the camera will get hot. If you hold on to the camera in this state, a low-temperature burn may be caused.
    - In places subject to extremely cold temperatures, the temperature of the camera's body may be lower than the environmental temperature. If possible, wear gloves when handling the camera in cold temperatures.
- **Be careful with the strap.**
  - Be careful with the strap when you carry the camera. It could easily catch on stray objects - and cause serious damage.



## Battery Handling Precautions

**Follow these important guidelines to prevent batteries from leaking, overheating, burning, exploding, or causing electrical shocks or burns.**



### DANGER

- The camera uses a lithium ion battery specified by Olympus. Charge the battery with the specified charger. Do not use any other chargers.
- Never heat or incinerate batteries.
- Take precautions when carrying or storing batteries to prevent them from coming into contact with any metal objects such as jewelry, pins, fasteners, etc.
- Never store batteries where they will be exposed to direct sunlight, or subjected to high temperatures in a hot vehicle, near a heat source, etc.
- To prevent causing battery leaks or damaging their terminals, carefully follow all instructions regarding the use of batteries. Never attempt to disassemble a battery or modify it in any way, by soldering, etc.
- If battery fluid gets into your eyes, flush your eyes immediately with clear, cold running water and seek medical attention immediately.
- Always store batteries out of the reach of small children. If a child accidentally swallows a battery, seek medical attention immediately.

En



### WARNING

- Keep batteries dry at all times.
- To prevent batteries from leaking, overheating, or causing a fire or explosion, use only batteries recommended for use with this product.
- Insert the battery carefully as described in the operating instructions.
- If rechargeable batteries have not been recharged within the specified time, stop charging them and do not use them.
- Do not use a battery if it is cracked or broken.
- If a battery leaks, becomes discolored or deformed, or becomes abnormal in any other way during operation, stop using the camera.
- If a battery leaks fluid onto your clothing or skin, remove the clothing and flush the affected area with clean, running cold water immediately. If the fluid burns your skin, seek medical attention immediately.
- Never subject batteries to strong shocks or continuous vibration.



### CAUTION

- Before loading, always inspect the battery carefully for leaks, discoloration, warping, or any other abnormality.
- The battery may become hot during prolonged use. To avoid minor burns, do not remove it immediately after using the camera.
- Always unload the battery from the camera before storing the camera for a long period.

## For customers in Europe



"CE" mark indicates that this product complies with the European requirements for safety, health, environment and customer protection. "CE" mark cameras are intended for sales in Europe.



This symbol [crossed-out wheeled bin WEEE Annex IV] indicates separate collection of waste electrical and electronic equipment in the EU countries. Please do not throw the equipment into the domestic refuse. Please use the return and collection systems available in your country for the disposal of this product.

En

## Trademarks

- IBM is a registered trademark of International Business Machines Corporation.
- Microsoft and Windows are registered trademarks of Microsoft Corporation.
- Macintosh is a trademark of Apple Computer Inc.
- xD-Picture Card™ is a trademark.
- All other company and product names are registered trademarks and/or trademarks of their respective owners.
- The standards for camera file systems referred to in this manual are the "Design Rule for Camera File System/DCF" standards stipulated by the Japan Electronics and Information Technology Industries Association (JEITA).

## Provisions of warranty

1. If this product proves to be defective, although it has been used properly (in accordance with the written Handling Care and Operating instructions supplied with it), during a period of two years from the date of purchase from an authorized Olympus distributor within the business area of Olympus Imaging Europa GmbH as stipulated in the authorized distributors list this product will be repaired, or at Olympus's option replaced, free of charge. To claim under this warranty the customer must take the product and this Warranty Certificate before the end of the two year warranty period to the dealer where the product was purchased or any other Olympus service station within the business area of Olympus Imaging Europa GmbH as stipulated in the authorized distributor list. During the one year period of the World Wide Warranty the customer may turn the product in at any Olympus service station. Please notice that not in all countries such Olympus service station exists.
2. The customer shall transport the product to the dealer or Olympus authorized service station at his own risk and shall be responsible for any costs incurred in transporting the product.
3. This warranty does not cover the following and the customer will be required to pay repair charge, even for defects occurring within the warranty period referred to above.
  - (a) Any defect that occurs due to mishandling (such as an operation performed that is not mentioned in the Handling Care or other sections of the instructions, etc.)
  - (b) Any defect that occurs due to repair, modification, cleaning, etc. performed by anyone other than Olympus or an Olympus authorized service station.
  - (c) Any defect or damage that occurs due to transport, a fall, shock, etc. after purchase of the product.
  - (d) Any defect or damage that occurs due to fire, earthquake, flood damage, thunderbolt, other natural disasters, environmental pollution and irregular voltage sources.
  - (e) Any defect that occurs due to careless or improper storage (such as keeping the product under conditions of high temperature and humidity, near insect repellents such as naphthalene or harmful drugs, etc.), improper maintenance, etc.
  - (f) Any defect that occurs due to exhausted batteries, etc.
  - (g) Any defect that occurs due to sand, mud, etc. entering the inside of the product casing.
  - (h) When this Warranty Certificate is not returned with the product.
  - (i) When any alterations whatsoever are made to the Warranty Certificate regarding the year, month and date of purchase, the customer's name, the dealer's name, and the serial number.
  - (j) When proof of purchase is not presented with this Warranty Certificate.
4. This Warranty applies to the product only; the Warranty does not apply to any other accessory equipment, such as the case, strap, lens cap and batteries.
5. Olympus's sole liability under this warranty shall be limited to repairing or replacing the product. Any liability for indirect or consequential loss or damage of any kind incurred or suffered by the customer due to a defect of the product, and in particular any loss or damage caused to any lenses, films, other equipment or accessories used with the product or for any loss resulting from a delay in repair or loss of data, is excluded. Compelling regulations by law remain unaffected by this.

## Notes regarding warranty maintenance

1. This warranty will only be valid if the Warranty Certificate is duly completed by Olympus or an authorized dealer or other documents contain sufficient proof. Therefore, please make sure that your name, the name of the dealer, the serial number and the year, month and date of purchase are all completed or the original invoice or the sales receipt (indicating the dealer's name, the date of purchase and product type) is attached to this Warranty Certificate. Olympus reserves the right to refuse free-of-charge service if neither Warranty Certificate is completed nor the above document is attached or if the information contained in it is incomplete or illegible.
  2. Since this Warranty Certificate will not be re-issued, keep it in a safe place.
- \* Please refer to the appended list for the authorized international Olympus service network.

## Disclaimer of Warranty

Olympus makes no representations or warranties, either expressed or implied, by or concerning any content of these written materials or software, and in no event shall be liable for any impelled warranty purchase are all completed or the original invoice or the sales receipt of merchantability or fitness for any particular purpose or for any consequential, incidental or indirect damages (including but not limited to damages for loss of business profits, business interruption and loss of business information) arising from the use of inability to use these written materials or software. Some states do not allow the exclusion or limitation of liability for consequential or incidental damages, so the above limitations may not apply to you.

# OLYMPUS®

<http://www.olympus.com/>

## OLYMPUS IMAGING CORP.

Shinjuku Monolith, 3-1 Nishi-Shinjuku 2-chome, Shinjuku-ku, Tokyo, Japan

## OLYMPUS IMAGING AMERICA INC.

Two Corporate Center Drive, P.O. Box 9058, Melville, NY 11747-9058, U.S.A. Tel. 631-844-5000

### Technical Support (USA)

24/7 online automated help: <http://www.olympusamerica.com/support>

Phone customer support: Tel. 1-888-553-4448 (Toll-free)

Our phone customer support is available from 8 am to 10 pm

(Monday to Friday) ET

E-Mail: [distec@olympus.com](mailto:distec@olympus.com)

Olympus software updates can be obtained at: <http://www.olympus.com/digital>

## OLYMPUS IMAGING EUROPA GMBH

Premises: Wendenstrasse 14-18, 20097 Hamburg, Germany

Tel: +49 40-23 77 3-0 / Fax: +49 40-23 07 61

Goods delivery: Bredowstrasse 20, 22113 Hamburg, Germany

Letters: Postfach 10 49 08, 20034 Hamburg, Germany

### European Technical Customer Support:

Please visit our homepage <http://www.olympus-europa.com>

or call our TOLL FREE NUMBER\* : **00800 - 67 10 83 00**

for Austria, Belgium, Denmark, Finland, France, Germany, Italy, Luxemburg, Netherlands,  
Norway, Portugal, Spain, Sweden, Switzerland, United Kingdom

\* Please note some (mobile) phone service providers do not permit access or request an  
additional prefix to +800 numbers.

For all European Countries not listed and in case that you can't get connected  
to the above mentioned number, please make use of the following

CHARGED NUMBERS: **+49 180 5 - 67 10 83** or **+49 40 - 237 73 899**

Our Technical Customer Support is available from 9 am to 6 pm MET (Monday to Friday)