

LG Network Storage

Quick Installation Guide

N1T1/N1A1



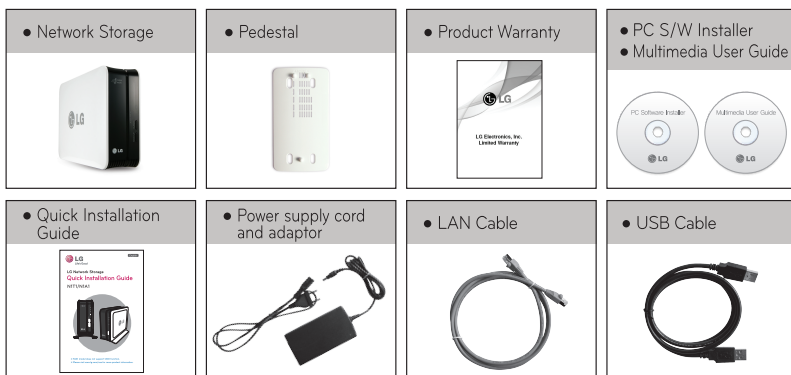
- ※ N1A1 model does not support ODD function.
- ※ Please visit www.lg.com/nas for more product information.

■ Table of Contents ■

1. Package Contents	02	6-4. Using LG Network Storage Using Back-up Button	13
2. Names of Product Parts	03	6-5. Using LG Network Storage Using mode change switch	14
3. Installing the Product Installing LG Network Storage	04	Supplementary [For Professionals]	
4-1. Installing the Program Installing NAS Detector	05	1. To Install in PC without Optical Disk Device	15
4-2. Installing the Program Using NAS Detector	06	2-1. If Cannot Set up an Automatic Router (UPnP Setting) When Setting DDNS Setting Port for External Connection (Port Forwarding Setup)	16
5-1. Setting LG Network Storage Running Web Menu	07	2-2. If Cannot Set up an Automatic Router (UPnP Setting) When Setting DDNS Disable Firewall for a Router(DMZ Setup): Setting a Router	17
5-2. Setting LG Network Storage Adding User/Granting Authority by Folder ..	08	2-3. If Cannot Set up an Automatic Router (UPnP Setting) When Setting DDNS Disabling Firewall for a Router(DMZ Setup): How to Disable Firewall for a Router in Each Case ..	18
5-3. Setting LG Network Storage Setting Remote Control/DDNS Setting	09		
6-1. Using LG Network Storage File Up/Download	10		
6-2. Using LG Network Storage Opening Network Folder	11		
6-3. Using LG Network Storage Connecting Network Drive	12		

1. Package Contents

☞ Thank you for purchasing LG Electronics Network Storage.
Before installation, please make sure you have all below.



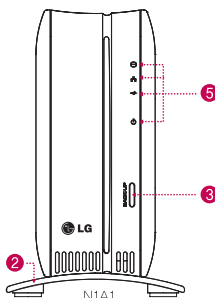
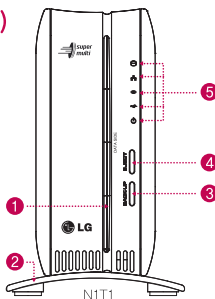
* Images or Pictures on the User Guide may differ for different models.

※ N1A1 model does not support ODD function.

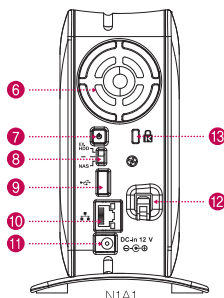
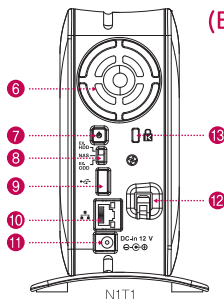
2. Names of Product Parts

After making sure you have the whole package, please learn the names of different parts.

(Front)



(Back)



1 ODD Slot hole : This is where you insert the disc. You should insert the disc having the writing side as a data side.

※ Supporting media are subject to change in accordance with the product.

※ N1T1 model contains a slot-type DVD drive and does not support Blu-ray media / 8cm disc.

2 Pedestal : You can place a Network Storage mainframe safely.

3 Back-up button : A button to back-up data of a disc or USB onto NAS.

4 ODD eject button : A button to eject a disc.

5 LED panel

6 Fan

7 Power button : A button to switch on and off the power supply.

※ If you shut down LG Network Storage using a button, press on the power button until you hear a buzzer sound. LG Network Storage starts shutting down if you remove your hand after the buzzer beeps, which means the start of shut-down.

8 Mode changing switch

9 USB port : USB 2.0 Interface.


10 LAN port : This is where you connect a LAN cable.

11 DC port : This is a port where you connect a power supply adaptor.

12 Adaptor cable holder : This helps to fix an adaptor cable and prevents it from falling out.

13 Kensington Lock : This is an antitheft lock ring.

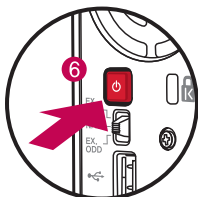
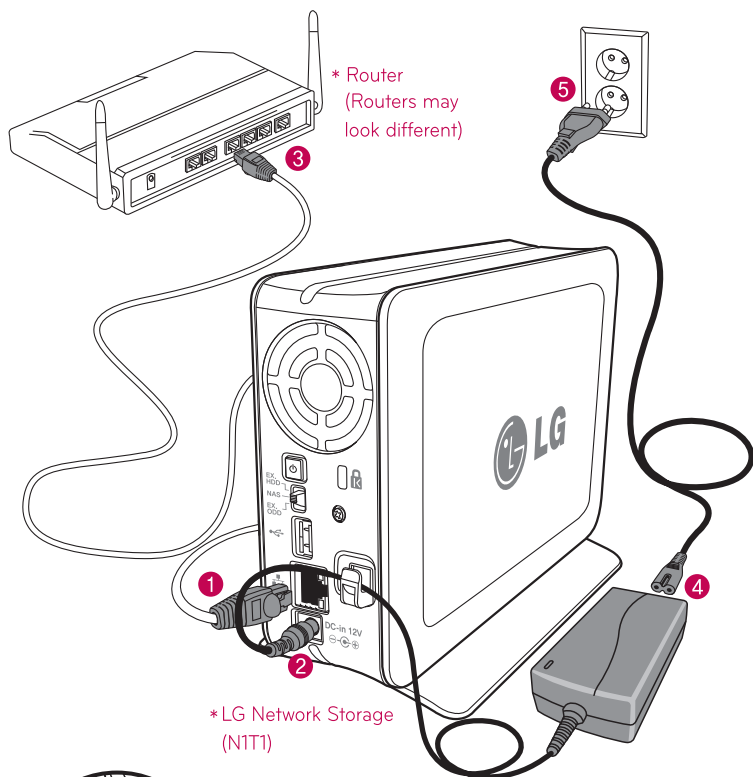
3. Installing the Product Installing LG Network Storage

 Install LG Network Storage as below in the numerical order.

Tip

You need a router for network.

※Refer to P. 18 for how to disable firewall for a router in different cases(DMZ setup).



When you turn on the power at the back of Network Storage, booting is completed with a cheerful alarm sound after approximately 40 seconds~1minute. (On normal connection state, a shape of network LED is turned on.)

4-1. Installing the Program Installing NAS Detector

1. Insert a disc 'LG Network Storage PC Software Installer' in the PC.

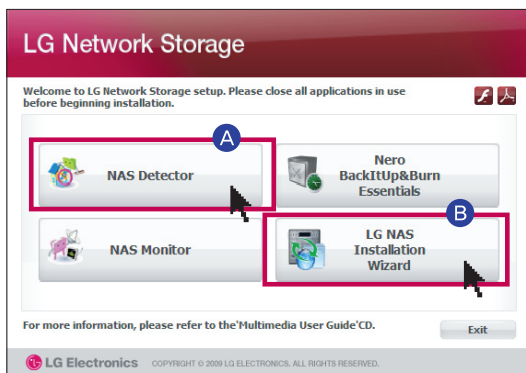


※ Caution


Do not insert in 'LG Network Storage'.

※ Refer to P. 15 when installing in PC without an optical disc(i.e. DVD).

2. A pop-up below will automatically appear.

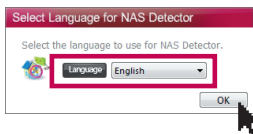


A Click 'NAS Detector'.

• Click the icon  in case a flash player is not installed in the PC.

- B LG NAS Install Wizard is a program that helps you to install NAS and set a complicated network easily. (Windows only)

3. Upon installation completion, choose a language you will use along with a creation of short-cut icon.



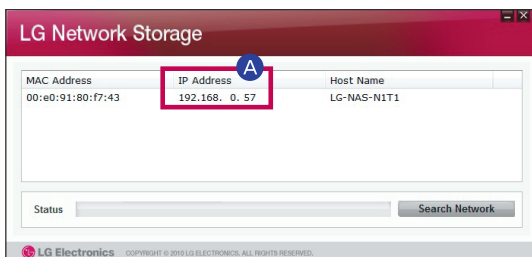
4-2. Installing the Program Using NAS Detector

Tip Refer to the manual in the program after installing the program, for more information about using a bundle program. (Comso Backup/Photo DVD Album/Cyberlink Product Category)

1. Double-click 'NAS Detector' icon.

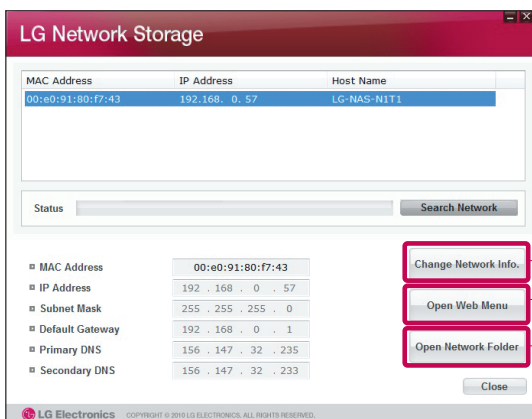


2. Click IP address.



A Click IP of searched Network storage and select 'Network Storage'.

※ If you cannot find network storage, connect the network storage and PC to the same router.



• Change information about IP address.

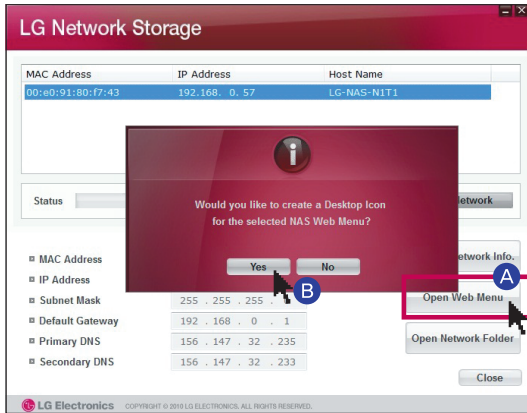
• Open the web menu of network storage (Refer to P. 7)

• Open the network folder of network storage (Refer to P. 11)

5 -1. Setting LG Network Storage Running Web Menu

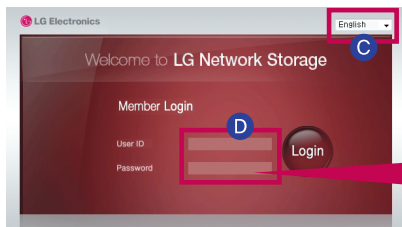
Tip

You can do administrative work, such as setting network information, managing sharing and service of network storage, store data using Blu-ray/DVD drive and set synchronization of a mobile device.



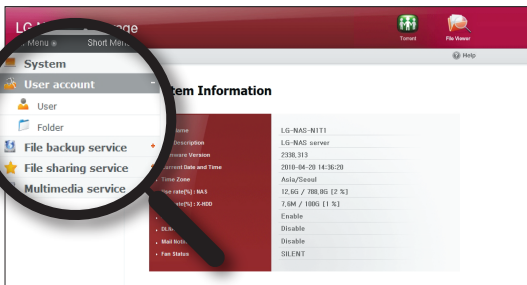
A Click 'Open web menu'.

B Select 'Go to web menu' on the pop-up screen.



C Select the language you want.

D Enter the ID 'admin' and password 'admin' to log in.



※ You can change network storage setting.

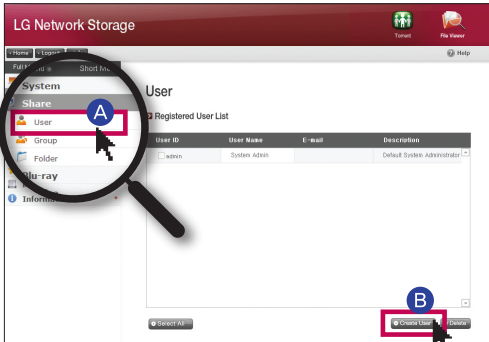
※ Change the password for security(Click web menu -> Share -> User -> 'Admin' and change the pass word).

5-2. Setting LG Network Storage

Add User/Grant Authorities by Folder

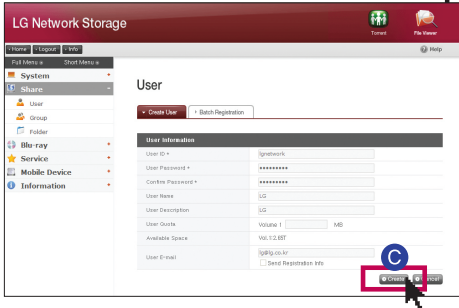
Tip Additional users can be added, besides the administrator.

1. Adding users.



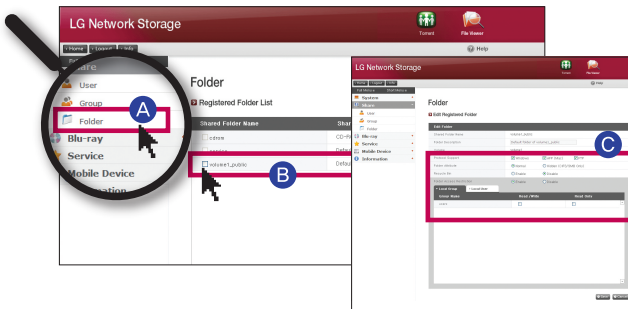
A Click Share and 'User'.

B Click 'Create User' to be added.



C Put ID/Password of the user be added, and click 'Create'.

2. Granting Authorities by Folder



A Click 'Folder'.

B 'Click 'Folder' to authorize.

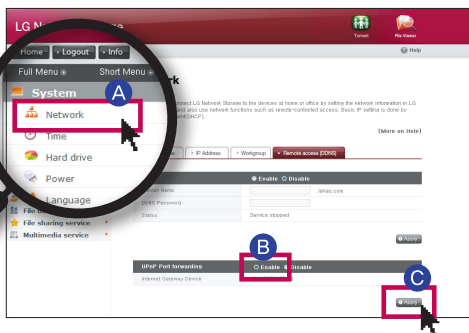
C Authorize users.

5 -3. Setting LG Network Storage

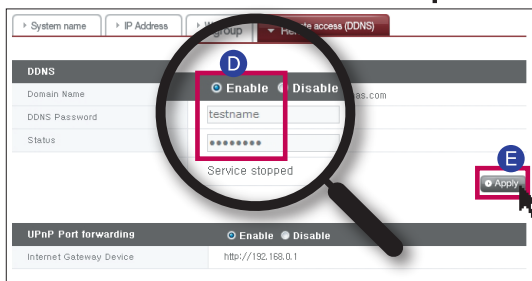
Setting Remote Control (DDNS Setting)

What is DDNS? (Dynamic Domain Name Service)

You will need a domain address in order to connect to the network in the remote controlling area.



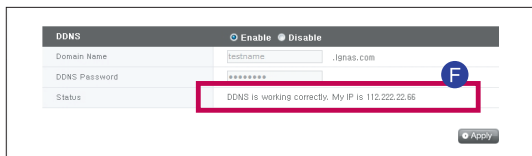
- A Go to web menu, and click System and 'Network'
- B Select 'Enable' for UPnP port forwarding
- C Click 'Apply' button.



- D Select 'Enable' for DDNS. Enter the domain name and password.
- E Click 'Apply' button.

※ Caution!

- Domain name should not include special characters or blank(Only English alphabets and numbers)
- If you select 'Disable' after registering the domain name, the existing domain will be deleted, and the domain name can be used in other network storages.
- Do not lose the password.



- F Text that says 'DDNS is working correctly' will appear and IP address will be set upon the completion of DDNS setting.

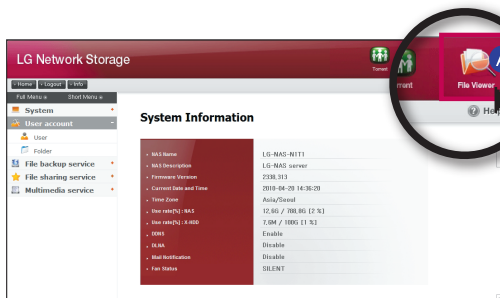
- ※ Run a test on the external connection by connecting to IP set by DDNS.
Once connected to the web menu, try connecting to the preset domain.

※ Now network storage is ready to use.

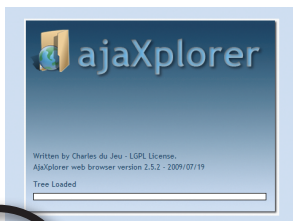
6-1. Using Network Storage File Up/Download

Tip

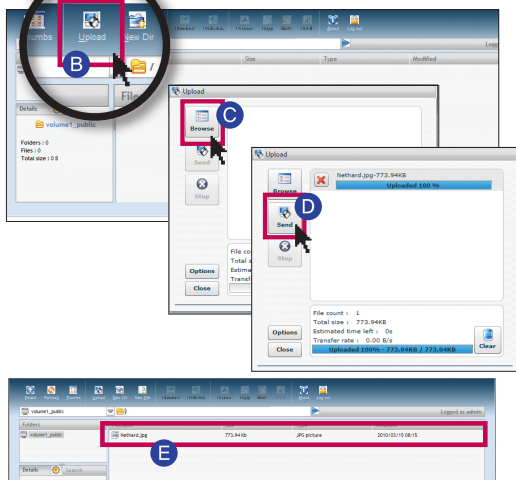
You can upload and download files from a remote-controlling area, using File Viewer.



A Click 'File Viewer' from web menu.



Web menu after loading



B Click 'Upload'.

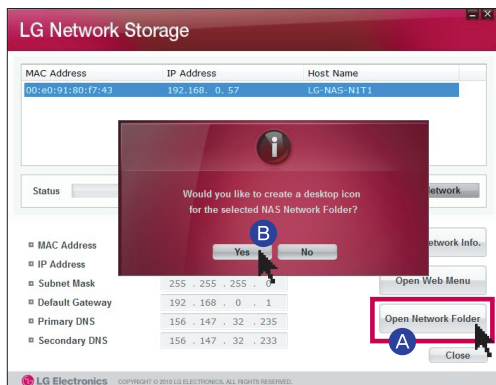
C Click 'Browse' and open the file

D Click 'Send'.

E Upload is complete.

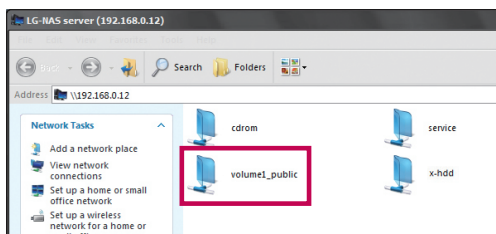
6-2. Using Network Storage Opening Network Folder

LG Network Storage can be used only at homes and offices where it is installed.



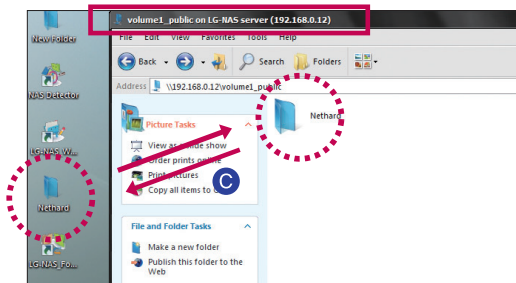
A Click 'Open Network Folder'

B 'Select 'Shortcut to Network Folder' on the pop-up screen



After opening the network folder, double-click 'volume1_public' to upload and download files as below.

※ When the Log In screen appears, refer to page12 D. (User ID: admin / Password: admin)

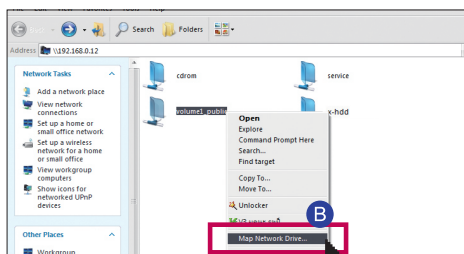


C Drag and drop to upload and download files.

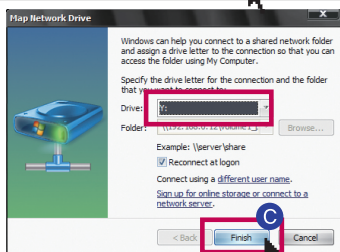
6-3. Using Network Storage Connecting to Network Drive

Tip

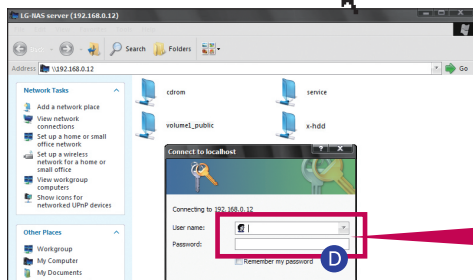
You can connect to network folder to use it on 'My Computer' just like PC HDD. Also, Network drive can be used only at homes or offices where Network Storage is installed.



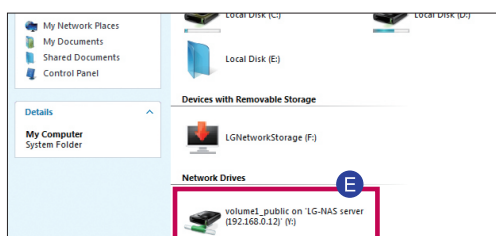
B Click the right button of the mouse and select 'Connect to Network Drive'.



C Select Drive and folder to access on the 'Connect to Network Drive' screen, and click 'Finish'.



D Enter the ID 'admin' and password 'admin' to log in.

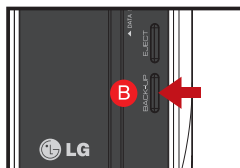



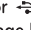
E The drive created in 'My Computer' can be used along with the hard disk.

6-4. Using Network Storage Using Back-up Button

 You can back up the data of USB or ODD onto Network Storage hard disk with a simple back-up button control.

※ N1A1 does not have an ODD function and can be backed up with USB only.



- A** Insert DVD/CD or USB in Network Storage.
- B** When DVD/CD or USB or inserted, press 'BACK-UP' button once.  or  LED blinks and it is backed up in Network Storage hard disk.

※ When ODD media (CD/DVD) and USB are simultaneously connected, back-up is progressed for the device, that is recognized at the latest.

- C** Once back-up is completed, alarm sound rings and USB part of the LED panel stops blinking simultaneously, and a folder is created with the name of the manufacturer of the storage device in service/backup/usb folder. This makes it be distinct from other devices in the future. In addition, a lower folder according to the back-up date is created and the whole content of the USB device is saved in LG Network Storage.

Folder name is automatically created as in the following.

Storage location	Name of the created folder
service/backup/usb	Name of the manufacturer of the storage device, serial number/type of file back-up/dates on which the folder is created

※ In case of a simple back-up when the same storage device is backed up more than several times, all of the data that is backed up at the latest are saved in Last Backup folder. When you back-up more than twice on the same date, serial number is attached at the back of the date. In a folder that is created for the first time, all of the data of an external storage device are saved. In folders created afterwards, added folders and files when compared to the data backed up at the latest are saved.

6-5. Using Network Storage Using mode change switch

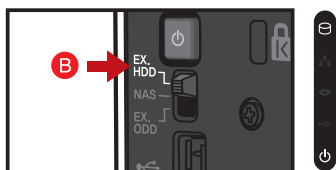
 You can use Network Storage also as external hard disk or external ODD (optical storage device) with a mode change switch.

※ N1A1 model does not support ODD function.



A You can use as Network Storage on 'NAS' mode.

※ Mode change while using 'NAS' mode
While you can use the switch, network connection state is disconnected.



B On 'EX. HDD' mode, you can connect Network Storage and PC using USB cable, and use it as an external hard disk.



C On 'EX. ODD' mode, you can use Network Storage and PC, and use it as an external ODD (optical storage device).

※ When the power supply is ON, use it immediately after switch change. When the power supply is OFF, ON booting after switch change.

※ Cautions

- If you change the switch into different mode before a buzzer beeps, switch function might not be efficient.
- If you change the switch during an operation, the pertinent operation fails and the pertinent mode switch function is performed. For example, if you change the mode switch on NAS mode during web burning, back-up or x-hdd format, a pertinent operation may fail or malfunction.

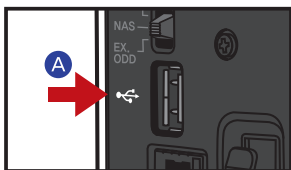
※ Cautions when using external HDD / ODD

- A maximum capacity of external HDD and external ODD supports at USB 2.0.

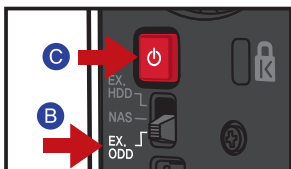
1. To Install in PC without Optical Disk Device

 Follow the instruction below to install in a PC without an optical disk device(i.e. DVD), such as a ultrathin laptop or a Netbook.

※ N1A1 model does not support ODD function.



A Connect PC and Network Storage you wish to connect using USB cable.

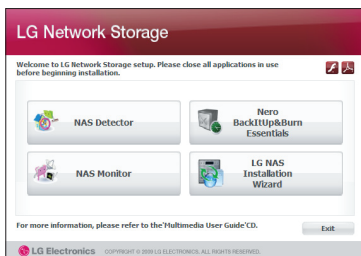


B Change 'Mode change switch' at the back of Network Storage to 'EX. ODD (external ODD mode)'.

C Press POWER button.




D Push in 'LG Network Storage PC Software Installer' disc as in the picture with the direction of an arrow as a data writing side.



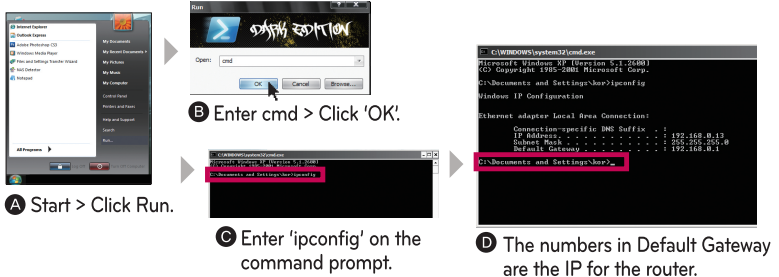
E When a pop-up appears on PC screen after a while, install 'NAS Detector'. (Refer to chapter 2 of page 5.)

If Cannot Set up an Automatic Router(UPnp Setting)

2-1. When Setting DDNS Setting Port for External Connection(Port Forwarding Setup)

 What is Port Forwarding? : It maps so that a certain port used on external internet and PC from the internal router can communicate with each other, and is safer than DMZ.

1. Check IP of the router



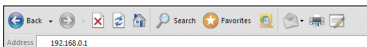
A Start > Click Run.

B Enter cmd > Click 'OK'.

C Enter 'ipconfig' on the command prompt.

D The numbers in Default Gateway are the IP for the router.

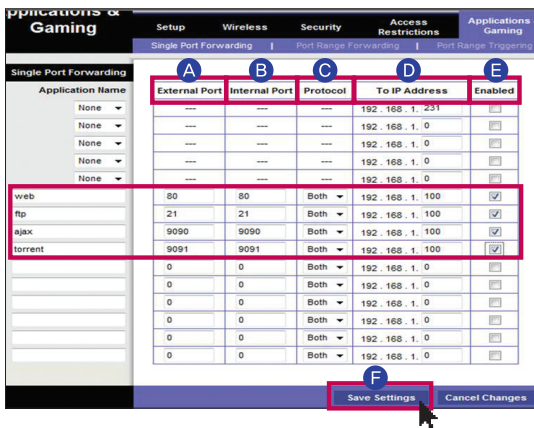
2. Log onto the router



Enter the IP in the address and log onto the router(Refer to the manual of the router when logging in with ID/Password)

3. Search for 'Port Forward' setting in the menu explorer and set as above.

※ The layout and terms may differ by router.




Application Name	External Port	Internal Port	Protocol	To IP Address	Enabled
web	80	80	Both	192.168.1.100	<input checked="" type="checkbox"/>
ftp	21	21	Both	192.168.1.100	<input checked="" type="checkbox"/>
ajax	9090	9090	Both	192.168.1.100	<input checked="" type="checkbox"/>
torrent	9091	9091	Both	192.168.1.100	<input checked="" type="checkbox"/>
	0	0	Both	192.168.1.0	<input type="checkbox"/>
	0	0	Both	192.168.1.0	<input type="checkbox"/>
	0	0	Both	192.168.1.0	<input type="checkbox"/>
	0	0	Both	192.168.1.0	<input type="checkbox"/>
	0	0	Both	192.168.1.0	<input type="checkbox"/>
	0	0	Both	192.168.1.0	<input type="checkbox"/>

F Save Settings

- A B** External Port / Internet port - Input the same type of service port
- Web - 80
 - FTP - 21
 - Ajax - 9090
 - Torrent - 9091
- C** Protocol : Select 'Both'
- D** To IP Address : Input the Network Storage IP for Service
- E** Check 'Enabled'.
- F** Click 'Save settings'.

If Cannot Set up an Automatic Router(UPnp Setting)

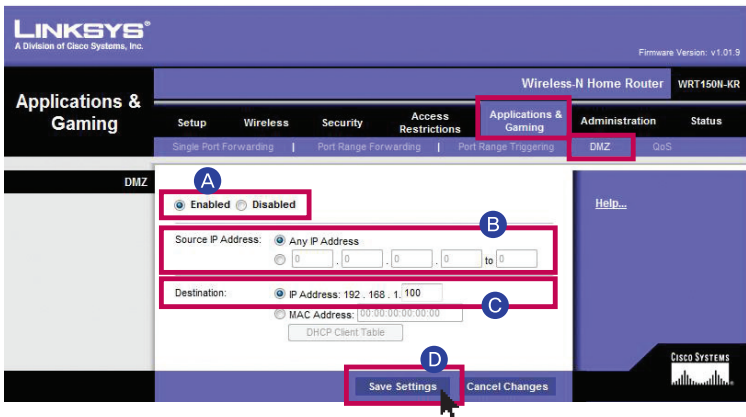
2-2. When Setting DDNS Disabling Firewall for a Router(DMZ Setup): Setting a Router

 What is DMZ? : DMS fixes problems that cannot be fixed externally because of a firewall from a router.

1. Refer to page 16 for IP check of the router and router login.

2. Find 'DMZ' in the menu explorer and set to the IP of LG Network Storage.

※ The layout and terms may differ by router.



The screenshot shows the Linksys web interface for a WRT150N-KR router. The 'Applications & Gaming' menu is expanded, and the 'DMZ' tab is selected. The 'DMZ' status is set to 'Enabled' (A). The 'Source IP Address' is set to 'Any IP Address' (B). The 'Destination' is set to 'IP Address: 192.168.1.100' (C). The 'Save Settings' button is highlighted (D).

A Click 'Enabled'!

B Source IP Address : Click 'Any IP Address'!

C Destination - IP Address : Input the Network Storage IP for Service.

D Click 'Save Settings' button.

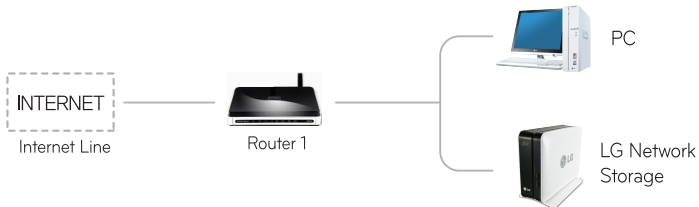
2-3. If Cannot Set up an Automatic Router(UPnp Setting) When Setting DDNS

2-3. Disabling Firewall for a Router(DMZ Setup): How to Disable Firewall for a Router in Each Case(1)



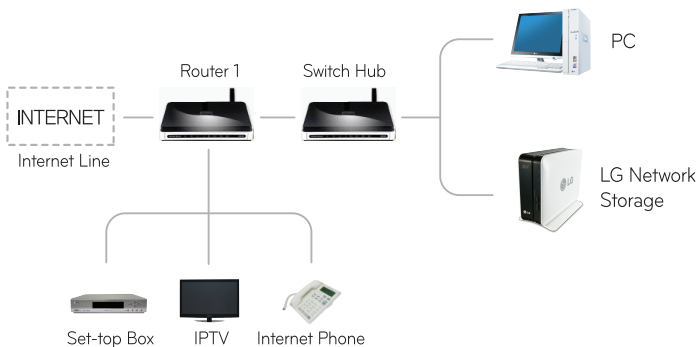
Please be aware that it may not be possible to play internet games in the PC, depending on the type of DMZ setting.

1. For Basic Connection



- Connect to the router and enter the internal IP for LG Network Storage in DMZ.

2. For Switch Hub



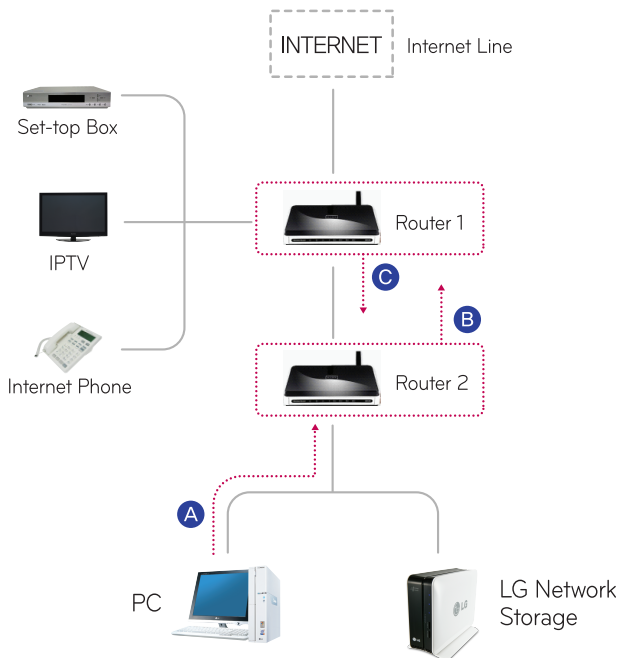
- Connect to the router and enter the internal IP for LG Network Storage in DMZ.

2-3. If Cannot Set up an Automatic Router(UPnP Setting) When Setting DDNS

Disabling Firewall for a Router(DMZ Setup): How to Disable Firewall for a Router in Each Case(2)

 Follow the instructions below to install in case you have two routers.

3. For 2 Routers



- A** Check IP of the router 2 in PC.
(Refer to 'Disable firewall of the router(DMZ Setup): Setting Router' on P. 17)
- B** Check WAN IP and gateway(IP of Router 1) on the setting screen of Router 2.
※ Refer to the router's manual.
- C** Connect to Router 1 and select DMZ setting(Refer to P. 17), and enter WAN IP from Router 2 in the DMZ IP of Router 1.
※ Router 1 includes the router offered by the internet provider.

Regulatory

Regulatory Notices



CAUTION

RISK OF ELECTRIC SHOCK
DO NOT OPEN



CAUTION: TO REDUCE THE RISK OF ELECTRIC SHOCK. DO NOT REMOVE COVER (OR BACK). NO USER-SERVICEABLE PARTS INSIDE. REFER SERVICING TO QUALIFIED SERVICE PERSONNEL.



This lightning flash with arrowhead symbol within an equilateral triangle is intended to alert the user to the presence of uninsulated dangerous voltage within the product's enclosure that may be of sufficient magnitude to constitute a risk of electric shock to persons.



The exclamation point within an equilateral triangle is intended to alert the user to the presence of important operating and maintenance (servicing) instructions in the literature accompanying the product.

Warnings:

- To reduce the risk of fire or electric shock, do not expose this apparatus to rain or moisture.
- To avoid shock hazard, disconnect all the cables and the power supply when you install the disconnected devices or open the covers of the system or attached devices. Electrical current from power, telephone, and communication cable is hazardous.
- To avoid electric shock, do not connect safety extra-low voltage (SELV) circuits to telephone-network voltage (TNV) circuits. LAN ports contain SELV circuits and WAN ports contain TNV circuits. Some LAN and WAN ports both use RJ-45 connectors. Use caution when connecting cables.
- Installation of the equipment must comply with local and national electrical codes.
- Do not insert the conductivity material to the product.

Regulatory

- Do not open the optical disk drive unit: no user adjustments or serviceable parts are inside. Use of controls, adjustments, or the performance of procedures other than those specified might result in hazardous radiation exposure. Avoid direct eye exposure with the laser beam contained in some drives.
- The apparatus power supply cord plug and appliance coupler are relied upon as the disconnect devices and shall remain readily accessible.

Safety Instructions

The appliance is not intended for use by young children or infirm persons without supervision.

Young children should be supervised to ensure that they do not play with appliance.

If the appliance is supplied from a cord extension set or an electrical portable outlet device, the cord extension set on electrical portable outlet device must be positioned so that it is not subject to splashing or ingress of moisture.

Cautions:

- Danger of explosion if battery is incorrectly replaced. Replace only with the same or equipment type.
- If the backup battery is incorrectly replaced, there is danger of explosion. The lithium battery contains lithium and can explode if it is not properly handled or disposed of.
Replace only with a battery of the type recommended by LG.
Risk of explosion if battery is replaced by an incorrect type. Dispose of used batteries according to the instructions.

Regulatory

FCC Notices (U.S. Only)

FCC, Class B

FCC WARNING: This equipment may generate or use radio frequency energy. Changes or modifications to this equipment may cause harmful interference unless the modifications are expressly approved in the instruction manual. The user could lose the authority to operate this equipment if an unauthorized change or modification is made.

REGULATORY INFORMATION: FCC PART 15

This product has been tested and found to comply with the limits for a Class B digital device, pursuant to Part 15 of the FCC Rules. These limits are designed to provide reasonable protection against harmful interference when the product is operated in a residential installation. This product generates, uses, and can radiate radio frequency energy and, if not installed and used in accordance with the instruction manual, may cause harmful interference to radio communications. However, there is no guarantee that interference will not occur in a particular installation. If this product does cause harmful interference to radio or television reception, which can be determined by turning the product off and on, the user is encouraged to try to correct the interference by one or more of the following measures:

- Reorient or relocate the receiving antenna.
- Increase the separation between the product and receiver.
- Connect the product into an outlet on a circuit different from that to which the receiver is connected.
- Consult a dealer or an experienced radio/television technician for help.

Industry Canada (Canada Only)

Industry Canada, Class B

This Class B digital apparatus complies with Canadian ICES-003.

Industry Canada, classe B

Cet appareil numérique de la classe B est conforme à la norme NMB-003 du Canada.

Regulatory

CE Notice (European Union)



LG Electronics hereby declares that this/these product(s) is/are in compliance with the essential requirements and other relevant provisions of Directive 2004/108/EC, 2006/95/EC, and 2009/125/EC.

European representative :

LG Electronics Service Europe B.V. Veluwezoom 15, 1327
AE Almere. The Netherlands
(Tel : +31-(0)36-547-8888)

Waste Electrical and Electronic Equipment (WEEE) Directive



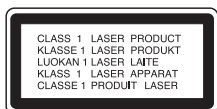
Disposal of your appliance

1. When this crossed-out wheeled bin symbol is attached to a product it means the product is covered by the European Directive 2002/96/EC.
2. All electrical and electric products should be disposed of separately from the municipal waste stream via designated collection facilities appointed by the government or the local authorities.
3. The correct disposal of your old appliance will help prevent potential negative consequences for the environment and human health.
4. For more detailed information about disposal of your old appliance, please contact your city office, waste disposal service or the shop where you purchased the product.

Laser Safety Statement

This product employs a Laser System. To ensure proper use of this product, please read the owner's manual carefully and retain it for future reference. Should the unit require maintenance, contact an authorized service centre. Use of controls, adjustments on the performance of procedures other than those specified herein may result in hazardous radiation exposure.

To prevent direct exposure to laser beam, do not try to open the enclosure. Visible laser radiation when opened. DO NOT STARE INTO BEAM.





www.lg.com/nas

P/N: MFL40014133(Ver. 1.00)