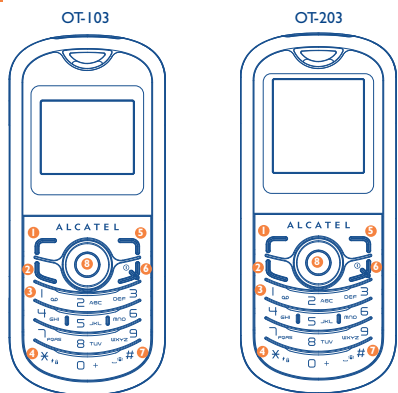


1 Your mobile



- 1 Left softkey
- 2 Pick up/Send call
- 3 Call memory
- 4 Voicemail
- 5 Lock/Unlock
- 6 Right softkey
- 7 Switch on/
- 8 Switch off
- 9 End call

Prolonged exposure to music at full volume on the music player may damage the listener's hearing. Set your phone volume safely. Use only headphones recommended by TCT Mobile Limited and its affiliates.

OT-103
OT-203
ALCATEL
mobile phones

- ⁽¹⁾ Depending on your network operator.
- ⁽²⁾ OT-103 only.
- ⁽³⁾ OT-203 only.

1.1 Keys

- Navigation key
 - Confirm an option (press the middle of the key)
 - Access "Templates" in "Messages" ⁽¹⁾ (long keypress in main screen)
 - Access favorite contact(s) ⁽²⁾ (long keypress in main screen)
- Pick up
 - Send a call
 - Access call memory (Redial) (short keypress)
- Switch on/Switch off the telephone (long keypress)
- End call
 - Return to the main screen
- Left softkey
- Right softkey
- Access your voicemail (long keypress)
- In edit mode
 - Short keypress: access the language list
 - Long keypress: enter zero
- In Edit mode:
 - Short keypress: change input methods
 - Long keypress: access the Symbols table
- From main screen
 - Short keypress: #
 - Long keypress: activate/deactivate the vibrator
- In edit mode:
 - Short keypress: (space)
 - Long keypress: add a word

- ⁽¹⁾ OT-103 only.
- ⁽²⁾ OT-203 only.

1.2 Main screen icons

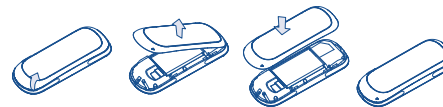
- Battery charge level.
- Vibration alert: your phone vibrates, but neither rings nor beeps except for the alarms.
- Headset connected.
- Call forwarding activated: your calls are forwarded.
- Alarm clock programmed.
- Voicemail message arrived.
- FM radio is on.
- Unanswered calls.
- Roaming.
- Line switching ⁽¹⁾: indicates the selected line.
- Shown only in no ciphering mode while calling, sending/receiving SMS.
- Level of network reception.
- Silence mode: your phone neither rings, beeps nor vibrates except for the alarms.
- Message unread.
- Keypad locked
- Stopwatch is active
- Ringtone alert
- Vibration and ringtone alert

- ⁽¹⁾ OT-103 only.
- ⁽²⁾ OT-203 only.
- ⁽³⁾ Depending on your network operator.

2 Getting started

2.1 Set-up

Removing and installing the back cover



Installing and removing the battery



Inserting and removing the SIM Card



Place the SIM card with the chip facing downwards and slide it into its housing. Make sure that it is correctly inserted. To remove the card, press it and slide it out.

2.2 Power on your phone

Hold down the key until the phone powers on.

2.3 Power off your phone

Hold down the key from the main screen.

3 Calls

3.1 Making a call

Dial the desired number then press the key to place the call. If you make a mistake, you can delete the incorrect digits by pressing the right softkey.

To hang up the call, press the key.

Making an emergency call

If your phone is covered by the network, dial emergency number and press the key to make an emergency call. This works even without a SIM card and without typing the PIN code or unlocking the keypad.

3.2 Calling your voicemail ⁽¹⁾

To access your voicemail, hold down the key.

3.3 Receiving a call

When you receive an incoming call, press the key to talk and then hang up using the key.

3.4 Available functions during the call

During a call, you can use your directory, short messages, etc. without losing your correspondent.

4 Call register

4.1 Call memory

You can access your call memory by pressing the key from the main screen.

4.2 My numbers

Type in or modify your telephone number or the number to access your voicemail and confirm by pressing . Your telephone number is usually written on your SIM card.

4.3 Billing

You can access different items with this option: Amount, Duration.

4.4 Call settings

You can access a number of items with this option: Call waiting, Call forwarding, Call barring, Answer mode, Auto redial...

4.5 Call control ⁽¹⁾

The menu serves you the dual purposes of cost monitoring and controlling during a call by the settings of "By cost" and "By duration".

5 Directory

5.1 Consulting your directory

To access the **directory** from the main screen, press the key and select the icon from the menu.

5.2 Creating a file

Select the directory in which you wish to create a file, press the "Options" softkey, select "Create file" then .

6 Messages

6.1 Create message

From the main menu select "Messages" to create text message. You can type a message, and you're also able to insert a pre-defined message from "Templates". While writing a message, select "Options" to access all the messaging options. You can save your messages that you send often to "Drafts" or "Templates".

7 Display ⁽¹⁾

7.1 Wallpaper

The wallpaper is displayed when you switch on your telephone.

7.2 Power On/Off ⁽³⁾

You can customise your welcome animation or image that appears when you switch on your phone. You can also customise your OFF screen with an image or animation.

7.3 Brightness

You may adjust black level with respect to LCD display by pressing the key.

8 Settings

From the main screen, select the icon menu and select the function of your choice in order to customise your telephone: Display ⁽²⁾, Clock, Keys, Dictionary, More settings...

- ⁽¹⁾ OT-103 only.
- ⁽²⁾ OT-203 only.
- ⁽³⁾ Depending on the model.

9 Tools

9.1 Organizer

Once you enter this menu from "Tools", there is a monthly-view calendar for you to keep track of important meetings, appointments, etc. Days with events entered will be marked in color.

9.2 Stopwatch

StopWatch is simple application for measuring time with possibility to register several results and suspend/resume measurement.

9.3 Alarm

Your mobile phone has a built-in alarm clock with a snooze feature.

9.4 Calculator

Hold down the key to get the decimal point. Confirm with the key or the left softkey.

9.5 Converter

Unit converter and Currency converter.

9.6 My shortcuts

Access the shortcuts already programmed. To programme new shortcuts: select "My shortcuts" if you want to create a quick access to a function, Directory, etc.

10 Games

Your Alcatel phone may include some games.

10.1 Game settings

It allows you to manage settings, in which you may set background music and vibration alert.

11 FM radio ⁽¹⁾

Your phone is equipped with an FM radio ⁽²⁾ with RDS functionality. You can use the application as a traditional FM radio with automatic tuning and saved channels or with parallel visual information related to the radio program on the display, if you tune to stations that offer Visual Radio service. You can listen to it while running other applications.

- ⁽¹⁾ OT-203 only.
- ⁽²⁾ The quality of the radio depends on the coverage of the radio station in that particular area.

12 Profiles

With this menu, you may personalise ringtones for different events and environments.

13 Latin input mode

To write messages, there are two writing methods:

- Normal: this mode allows you to type a text by choosing a letter or a sequence of characters associated with a key. Press the key several times until the desired letter is highlighted. When you release the key the highlight character is inserted into the text.
- Predictive with the Zi mode: this mode speeds up the writing of your text. Write the word by pressing a key between and and . Press the key once and the word will be modified each time you press a key. As you go on, the word will keep changing. Example: For "Tomorrow", press on the following keys: = Too -> -> tomorrow
- + key in edit mode
 - Short keypress: access the language list
 - Long keypress: enter zero

ALCATEL is a trademark of Alcatel-Lucent and used under license by TCT Mobile Limited.

All rights reserved © Copyright 2009 TCT Mobile Limited.

TCT Mobile Limited reserves the right to alter material or technical specification without prior notice.

