



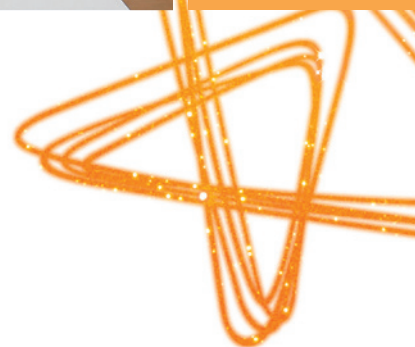
KONICA MINOLTA

The essentials of imaging



bizhub C20P

Smart and powerful in colour and b/w



Office system bizhub C20P

bizhub C20P, office system



Fast, quiet, economic: quality in colour and b/w

Small teams, workgroups and single users will welcome the bizhub C20P as their perfect versatile printing partner. Featuring latest Emperon controller technology this compact printer leaves nothing to be desired when it comes to creating everyday office documents – especially as it's convincingly economic to use. Its stylish design, virtually silent operation and clever functionality make it an asset on everybody's desktop!

■ The bizhub C20P is fast! It is ready to start after just 36 seconds warm-up and delivers 24 prints per minute in both colour and b/w. Via its built-in duplexer it produces immaculate double-sided prints at 100% productivity, saving on paper at the same time.

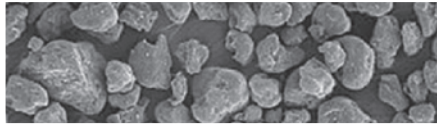
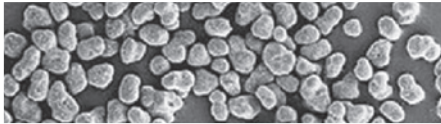
■ The bizhub C20P delivers quality! Thanks to Simitri® HD toner its prints are beautifully sharp and crisp whether in colour or b/w. This makes it the ideal allrounder to produce any type of office document: coloured presentations, handbooks, illustrated reports and whatever else is needed.

■ The bizhub C20P is quiet! With its amazingly low operating noise, it can hardly be heard during production – paired with its small footprint that's ideal for a prominent desktop position. And its easy front access to paper trays and consumables means even more user convenience.

→ Configurations

bizhub C20P 





Innovative technology, remarkable results

The bizhub C20P impresses its users with advanced technology and high flexibility. It integrates smoothly into existing setups anywhere, streamlining document output and enhancing the overall productivity of the team or workgroup.

- Equipped with Konica Minolta's latest Emperon™ controller technology, the bizhub C20P features a 500 MHz page-processor plus standard 256 MB RAM. The Emperon™ system ensures compatibility with PostScript 3 and PCL 6 and enables seamless integration into virtually any network. Native support of XPS, Microsoft Vista's XML paper specification, is also provided². With Gigabit Ethernet and high-speed USB 2.0 support connecting the bizhub C20P is straightforward and efficient.
- Thanks to the advanced capabilities of Simitri® HD, Konica Minolta's high definition polymerised toner, the bizhub C20P delivers better-than-average print quality and high durability. A unique edge enhancement process sharpens the contours of text and graphics – the result is a crisp and clear printed image, whether in colour or b/w.
- Its versatile media handling capabilities make the bizhub C20P a true professional when it comes to creating high-impact presentations, convincing reports, comprehensive manuals, business cards and more. Its standard 250-sheet paper tray is enhanced with a flexible 100-sheet multi-purpose tray via which up to 210 gsm paper can be fed. Where required, an optional lower paper feeder can increase the overall paper capacity to generous 850 pages.
- Access limitation and volume tracking ensure transparency of use and facilitate cost control. Colour printing for example can be limited to certain users, which can help keep print costs in check¹. Secure printing is also available², enabling users to delay printing by first setting a password on their computer, which they then need to enter in the printer display to release their job. Full confidentiality is thus guaranteed.
- Web-based device management is provided with PageScope Web Connection, informing users on the status and settings of the bizhub C20P right on their PC monitor. PageScope NetCare enhances the administrator support, providing fast access and simple monitoring on the network.





KONICA MINOLTA

Simitri HD
High Definition Polymerised Toner



Technical specifications

Printer specifications

Printing system

Electrostatic laser print
Tandem, indirect

Toner system

Simitri® HD polymerised toner

Print speed

Colour up to 24 ppm (A4)
Mono up to 24 ppm (A4)

1st print time

Colour 13 sec.
Mono 13 sec.

Warm-up time

Approx. 36 sec.

Print resolution

PhotoART 9600
(600 x 600 x 4-bit contone)

Controller CPU

500 MHz

Page description language

PostScript 3
PCL 6 (XL3.0)
PCL 5e/c
XPS²

Operating systems

Windows 2000/XP/XP64
Windows VISTA 32/64
Macintosh OSX 10.2, 3, 4
Server 2003/2003 x64
Linux: Redhat v9.0, SUSE v8.2

Interface

10-Base-T/100-Base-T/
1,000-Base-T Ethernet
USB 2.0
Bidirectional IEEE 1284 parallel

System specifications

Memory

Standard: 256 MB
Max.: 768 MB

Hard disc (optional)

40 GB

Paper size

A6–A4
Custom paper sizes
(92–216 mm x 148–356 mm)

Paper weight

60–210 gsm

Paper input capacity

Standard: 350 sheets
Max.: 850 sheets

Paper output capacity

Max.: 200 sheets face down standard

Automatic duplexing

A4
60–90 gsm

Power consumption

220–240 V / 50/60 Hz
550 Watts or less (average printing)
140 Watts or less (average standby)
1.2 KW or less (max.)

System dimensions (W x D x H, mm)

469 x 536 x 385

System weight

Approx. 34,5 kg

System features

Print Functions

ICC profile/Simulation support
Direct print¹ of TIFF, JPEG, PDF, XPS²
USB direct printing¹ of
TIFF, JPEG, PDF, XPS²
Job programming "Easy Set" – storable
print settings
Overlay, Watermark
Toner save mode

Security

Secure Print – code protected
(with optional hard disc)
IP filtering
Ipsec (IPv6) support
IEEE802.1x

Software

PageScope NetCare
PageScope Data Administrator
PageScope Direct Print Utility
PageScope Network Setup
PageScope EMS plug-in
PageScope Plug and Print
PageScope NDPS Gateway

¹ Optional CF card enables storing fonts/forms/overlays/colour-profiles, direct printing (PDF, TIFF and JPEG), Collating, Job Accounting and User/Department authentication. More than 1GB CF card is required for Collating.

² Optional hard disc kit enables Secure printing, Proof-then-Print, Print & Hold, Job storing and XPS emulation in addition to all extra functions with CF card¹.

- All specifications relating to paper capacity refer to A4-size paper of 80 gsm quality.
- All specifications relating to printing speeds refer to A4-size paper that is printed crosswise in multipage, simplex mode.
- The support and availability of the listed specifications and functionalities varies depending on operating systems, applications, network protocols as well as network and system configurations.
- The stated life expectancy of each consumable is based on specific operating conditions such as page coverage for a particular page size (5 % coverage of A4). The actual consumables life will vary depending on the use and other printing variables including page coverage, page size, media type, continuous or intermittent printing, ambient temperature and humidity.
- Some of the product illustrations contain optional accessories.
- Specifications and accessories are based on the information available at the time of printing, and are subject to change without notice.
Konica Minolta does not warrant that any prices or specifications mentioned will be error-free.
- Microsoft, Windows and the Windows logo are trademarks, or registered trademarks, of Microsoft Corporation in the United States and/or other countries.
- All other brand and product names may be registered trademarks or trademarks of their respective holders and are hereby acknowledged.
- Printed in Germany on chlorine-free bleached paper.

Your Konica Minolta Business Solutions Partner:



Konica Minolta
Business Solutions Europe GmbH
Europaallee 17
30855 Langenhagen • Germany
Tel.: +49 (0) 511 74 04-0
Fax: +49 (0) 511 74 10 50
www.konicaminolta.eu