

**Pioneer**

# **X-SMC01-K**

# **X-SMC01BT-W**

# **X-SMC01BT-K**

# **X-SMC01BT-S**

Slim Micro System

Discover the benefits of registering your product online at  
<http://www.pioneer.co.uk> (or <http://www.pioneer.eu>).

Operating Instructions

**COMPACT**  
**disc**  
DIGITAL AUDIO

 **Bluetooth®**

Made for



**iPod**



**iPhone**



**iPad**

## CAUTION

TO PREVENT THE RISK OF ELECTRIC SHOCK, DO NOT REMOVE COVER (OR BACK). NO USER-SERVICEABLE PARTS INSIDE. REFER SERVICING TO QUALIFIED SERVICE PERSONNEL.

D3-4-2-1-1\_B1\_En

## WARNING

This equipment is not waterproof. To prevent a fire or shock hazard, do not place any container filled with liquid near this equipment (such as a vase or flower pot) or expose it to dripping, splashing, rain or moisture.

D3-4-2-1-3\_A1\_En

## WARNING

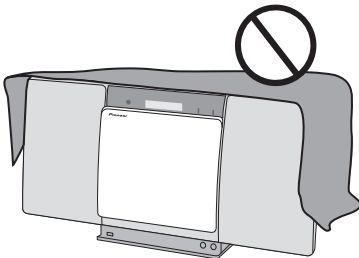
To prevent a fire hazard, do not place any naked flame sources (such as a lighted candle) on the equipment.

D3-4-2-1-7a\_A1\_En

## WARNING

Slots and openings in the cabinet are provided for ventilation to ensure reliable operation of the product, and to protect it from overheating. To prevent fire hazard, the openings should never be blocked or covered with items (such as newspapers, table-cloths, curtains) or by operating the equipment on thick carpet or a bed.

D3-4-2-1-7b\*\_A1\_En



## Operating Environment

Operating environment temperature and humidity:  
+5 °C to +35 °C (+41 °F to +95 °F); less than 85 %RH  
(cooling vents not blocked)

Do not install this unit in a poorly ventilated area, or in locations exposed to high humidity or direct sunlight (or strong artificial light).

D3-4-2-1-7c\*\_A2\_En

When using this product, confirm the safety information shown on the bottom of the unit and the AC adapter label.

D3-4-2-2-4\_B1\_En

This product is for general household purposes. Any failure due to use for other than household purposes (such as long-term use for business purposes in a restaurant or use in a car or ship) and which requires repair will be charged for even during the warranty period.

K041\_A1\_En

## CAUTION

The **STANDBY/ON** switch on this unit will not completely shut off all power from the AC outlet. Since the power cord serves as the main disconnect device for the unit, you will need to unplug it from the AC outlet to shut down all power. Therefore, make sure the unit has been installed so that the power cord can be easily unplugged from the AC outlet in case of an accident. To avoid fire hazard, the power cord should also be unplugged from the AC outlet when left unused for a long period of time (for example, when on vacation).

D3-4-2-2a\*\_A1\_En

## CAUTION

This product is a class 1 laser product classified under the Safety of laser products, IEC 60825-1:2007.

CLASS 1 LASER PRODUCT

D58-5-2-2a\_A1\_En

## WARNING

Store small parts out of the reach of children and infants. If accidentally swallowed, contact a doctor immediately.

D41-6-4\_A1\_En

## Store the AC adapter out of the reach of children and infants.

The AC adapter cord may accidentally wind around the neck and it may cause suffocation.

## Information for users on collection and disposal of old equipment and used batteries

(Symbol for equipment)



(Symbol examples) for batteries



These symbols on the products, packaging, and/or accompanying documents mean that used electrical and electronic products and batteries should not be mixed with general household waste.

For proper treatment, recovery and recycling of old products and used batteries, please take them to applicable collection points in accordance with your national legislation.

By disposing of these products and batteries correctly, you will help to save valuable resources and prevent any potential negative effects on human health and the environment which could otherwise arise from inappropriate waste handling.

For more information about collection and recycling of old products and batteries, please contact your local municipality, your waste disposal service or the point of sale where you purchased the items.

**These symbols are only valid in the European Union.**

**For countries outside the European Union:**

If you wish to discard these items, please contact your local authorities or dealer and ask for the correct method of disposal.

K058a\_A1\_En

### AC adapter caution

- Make sure to grasp the body of the AC adapter when removing it from the power outlet. If you pull the power cord, it may become damaged which could lead to fire and/or electrocution.
- Do not attempt to plug in or remove the AC adapter with wet hands. This may result in electrocution.
- Insert the prongs of the AC adapter all the way into the power outlet. If the connection is incomplete, heat may be generated which could lead to fire. Furthermore, contact with the connected prongs of the adapter may result in electrocution.
- Do not insert the AC adapter into a power outlet where the connection remains loose despite inserting the prongs all the way into the outlet. Heat may be generated which could lead to fire. Consult with the retailer or an electrician regarding replacement of the power outlet.
- Do not place the unit, a piece of furniture, etc., on the power cord, or pinch the cord. Never make a knot in the cord or tie it with other cords. The power cords should be routed such that they are not likely to be stepped on. A damaged AC adapter and power cord can cause a fire or give you an electrical shock. Check the AC adapter and the power cord once in a while. When you find it damaged, ask your nearest PIONEER authorized service center or your dealer for a replacement.

### Radio wave caution

This unit uses a 2.4 GHz radio wave frequency, which is a band used by other wireless systems (Microwave ovens and Cordless phones, etc.). In this event noise appears in your television image, there is the possibility this unit (including products supported by this unit) is causing signal interference with the antenna input connector of your television, video, satellite tuner, etc. In this event, increase the distance between the antenna input connector and this unit (including products supported by this unit).

- Pioneer is not responsible for any malfunction of the compatible Pioneer product due to communication error/malfunctions associated with your network connection and/or your connected equipment. Please contact your Internet service provider or network device manufacturer.
- A separate contract with/payment to an Internet service provider is required to use the Internet.

### POWER-CORD CAUTION

Handle the power cord by the plug. Do not pull out the plug by tugging the cord and never touch the power cord when your hands are wet as this could cause a short circuit or electric shock. Do not place the unit, a piece of furniture, etc., on the power cord, or pinch the cord. Never make a knot in the cord or tie it with other cords. The power cords should be routed such that they are not likely to be stepped on. A damaged power cord can cause a fire or give you an electrical shock. Check the power cord once in a while. When you find it damaged, ask your nearest PIONEER authorized service center or your dealer for a replacement.

S002\*\_A1\_En

Thank you for buying this Pioneer product.

Please read through these operating instructions so that you will know how to operate your model properly. After you have finished reading the instructions, put them in a safe place for future reference.

# Contents

## 01 Before you start

What's in the box .....	5
Loading the batteries in the remote control .....	5
Using the remote control .....	6
When moving the unit.....	6

## 02 Part names and functions

Remote control .....	7
Hang from the wall to use .....	8
Front panel .....	9
Top panel/Rear panel .....	10

## 03 Connections

Connecting antenna .....	11
Using external antennas.....	11
Plugging in .....	11

## 04 Getting started

To turn the power on .....	12
Setting the clock .....	12
General control .....	12
Input function.....	12
Display brightness control .....	12
Volume auto setting.....	12
Volume control.....	12
Muting.....	12
Sound controls .....	13
Equalizer.....	13
P.BASS control .....	13
Bass/treble control .....	13
Setting the wake-up timer .....	13
Calling the wake-up timer.....	14
Cancelling the wake-up timer.....	14
Using the wake-up timer.....	14
Using the sleep timer .....	14
Using Headphones .....	14

## 05 iPod/iPhone/iPad playback

Confirming what iPod/iPhone/iPad models are supported .....	15
Connecting iPod/iPhone/iPad using supplied iPad stand .....	15
Playing iPod/iPhone/iPad .....	16

## 06 Disc playback

Playing discs or files .....	17
Advanced CD or MP3/WMA disc playback .....	18
Direct track search .....	18
Repeat play.....	18
Random play .....	18
Programmed play (CD or MP3/WMA) .....	19
About downloading MP3/WMA .....	19
About folder playback order .....	19
Specify the folder to play.....	20
Switch the display contents .....	20

## 07 USB playback

Playing USB storage devices .....	21
Repeat play.....	21

Random play .....	21
Specify the folder to play.....	22
Switch the display contents .....	22
Playing in the desired order (Programmed Play) ....	22

## 08 Using the tuner

Listening to the radio broadcasts .....	23
Tuning.....	23
Saving station presets.....	23
To recall a memorised station .....	24
To scan the preset stations.....	24
To erase entire preset memory.....	24
Using the Radio Data System (RDS) .....	24
An introduction to RDS.....	24
Searching for RDS programs.....	24
Information provided by RDS .....	25
Using the Auto Station Program Memory (ASPM).....	25
Notes for RDS operation.....	25

## 09 Other connections

Connecting auxiliary components .....	26
---------------------------------------	----

## 10 Bluetooth® Audio playback (X-SMC01BT only)

Music playback using <i>Bluetooth</i> wireless technology .....	27
Remote control operation .....	27
Pairing with the unit (Initial registration) .....	27
Listen to music on the unit from a <i>Bluetooth</i> capable device .....	28
BT STANDBY .....	28
Radio wave caution .....	29
Scope of operation .....	29
Radio wave reflections .....	29
Precautions regarding connections to products supported by this unit .....	29

## 11 Additional information

Troubleshooting .....	30
Playable discs and formats .....	33
Regarding copy protected CDs .....	33
Supported audio file formats .....	33
Cautions on use .....	33
When moving this unit .....	33
Place of installation.....	33
Do not place objects on this unit.....	34
About condensation .....	34
Cleaning the product.....	34
Cleaning the lens.....	34
Handling discs .....	34
Storing .....	34
Cleaning discs.....	34
About specially shaped discs.....	34
About iPod/iPhone/iPad .....	35
Auto power off setting .....	35
Restoring all the settings to the defaults .....	35
Specifications .....	36

## Chapter 1:

## Before you start

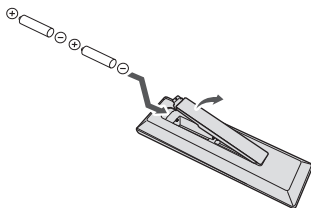
## What's in the box

Please confirm that the following accessories are in the box when you open it.

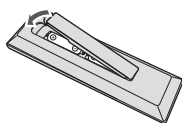
- Remote control
- AC adapter
- AAA batteries (R03) x 2
- FM wire antenna
- iPad stand
- Warranty card
- Quick start guide
- Operating instructions (CD-ROM)

## Loading the batteries in the remote control

**1** Open the rear lid and load the batteries as illustrated below.



**2** Close the rear lid.



The batteries included with the unit have been provided to allow you check product operation and may not last long. We recommend using alkaline batteries that have a longer life.

## ⚠ CAUTION

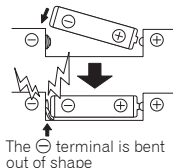
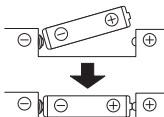
- When inserting the batteries, make sure not to damage the springs on the battery's  $\ominus$  terminals. This can cause batteries to leak or over heat.



Insert the battery by aligning the  $\ominus$  pole against the remote control's  $\ominus$  terminal



If a battery pushes and bends the  $\ominus$  terminal out of shape, there is possibility of the alkaline battery shorting out

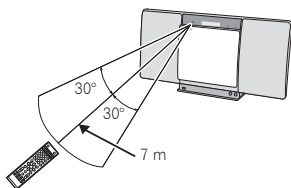


- Do not use any batteries other than the ones specified. Also, do not use a new battery together with an old one.
- When loading the batteries into the remote control, set them in the proper direction, as indicated by the polarity marks ( $\oplus$  and  $\ominus$ ).
- Do not heat batteries, disassemble them, or throw them into flames or water.
- Batteries may have different voltages, even if they are the same size and shape. Do not use different types of batteries together.
- To prevent leakage of battery fluid, remove the batteries if you do not plan to use the remote control for a long period of time (1 month or more). If the fluid should leak, wipe it carefully off the inside of the case, then insert new batteries. If a battery should leak and the fluid should get on your skin, flush it off with large quantities of water.
- When disposing of used batteries, please comply with governmental regulations or environmental public institution's rules that apply in your country/area.
- **WARNING**

Do not use or store batteries in direct sunlight or other excessively hot place, such as inside a car or near a heater. This can cause batteries to leak, overheat, explode or catch fire. It can also reduce the life or performance of batteries.

**Using the remote control**

The remote has a range of about 7 m at an angle of about 30° from the remote sensor.

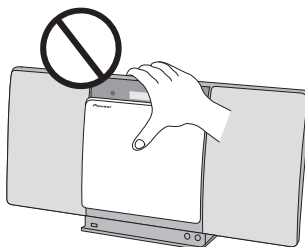


Keep in mind the following when using the remote control:

- Make sure that there are no obstacles between the remote and the remote sensor on the unit.
- Remote operation may become unreliable if strong sunlight or fluorescent light is shining on the unit's remote sensor.
- Remote controllers for different devices can interfere with each other. Avoid using remotes for other equipment located close to this unit.
- Replace the batteries when you notice a fall off in the operating range of the remote.

**When moving the unit**

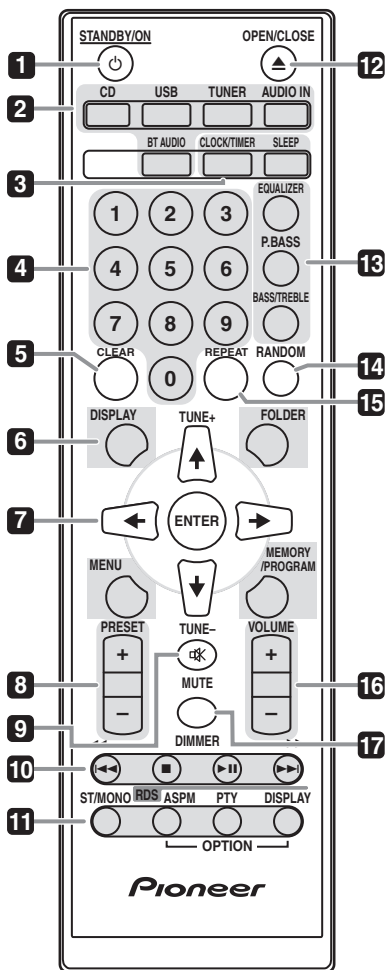
Do not hold the unit by the electric slide CD door when carrying the unit. It could damage the unit.



## Chapter 2:

# Part names and functions

## Remote control



### 1 STANDBY/ON

Switches the receiver between standby and on (page 12).

### 2 Input function buttons

Use to select the input source to this receiver (pages 16, 17, 21, 23, 26 and 27).

### 3 Control buttons CLOCK/TIMER

Use for setting the clock, as well as for setting and checking the timers (page 12).

#### SLEEP

See *Using the sleep timer* on page 14.

### 4 Numeric buttons (0 to 9)

Use to enter the number (page 18).

### 5 CLEAR

Use to clear the programmed play (page 19).

### 6 Control buttons DISPLAY

Press to change the display for songs playing back from CD or USB (page 20).

#### FOLDER

Use to select the folder of the MP3/WMA disc or USB mass storage device (page 19).

#### MENU

Used when displaying iPod/iPhone menu screen.

#### MEMORY/PROGRAM

Use to memory or program the MP3/WMA disc (page 19).

### 7 (TUNE +/-), ENTER

Use to select/switch system settings and modes, and to confirm actions.

Use **TUNE +/-** can be used to find radio frequencies (page 23).

### 8 PRESET +/-

Use to select preset radio stations (page 24).

### 9 MUTE

Mutes/unmutes the sound (page 12).

### 10 Playback control buttons

Use to control each function after you have selected it using the input function buttons (page 17).

### 11 Tuner control buttons ST/MONO

Use to switch the sound mode between stereo and monaural. (page 23)

### RDS ASPM

Use to search for RDS Auto station program memory (page 24).

### RDS PTY

Use to search for RDS program types (page 24).

### RDS DISPLAY

Press to change the RDS display for information mode (page 24).

### 12 OPEN/CLOSE

Use to open or close the electric slide CD door (page 17).

### 13 Sound control buttons

Adjust the sound quality (page 13).

### 14 RANDOM

Randomize order of track playback from a CD, iPod or USB (page 18).

### 15 REPEAT

Press to change the repeat play setting from a CD, iPod or USB (page 18).

### 16 Volume control buttons

Use to set the listening volume (page 12).

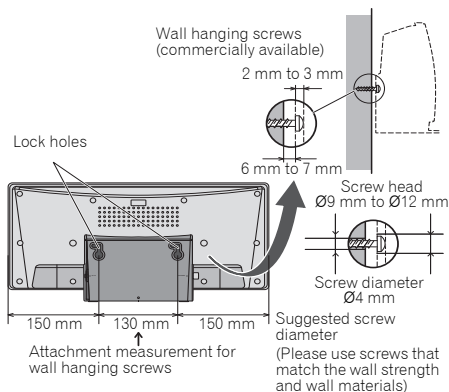
### 17 DIMMER

Dims or brightens the display. The brightness can be controlled in four steps (page 12).

## Hang from the wall to use

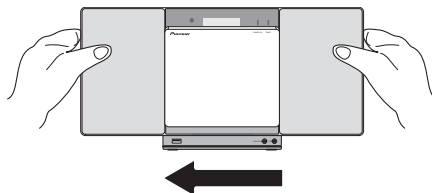
When hanging the unit from a wall, firmly screw the wall hanging screws (sold separately) into the wall, and confirm that the wall is capable of holding the unit safely. If the materials or strength of the wall cannot support the weight of the unit, then there is the possibility of the unit falling off.

### 1 Screw the wall hanging screws into the wall, putting them the specified attachment measurement (130 mm) apart.



### 2 Insert the wall hanging screws into the lock holes.

### 3 Slide to the left to secure in place. (Slide distance is around 10 mm)

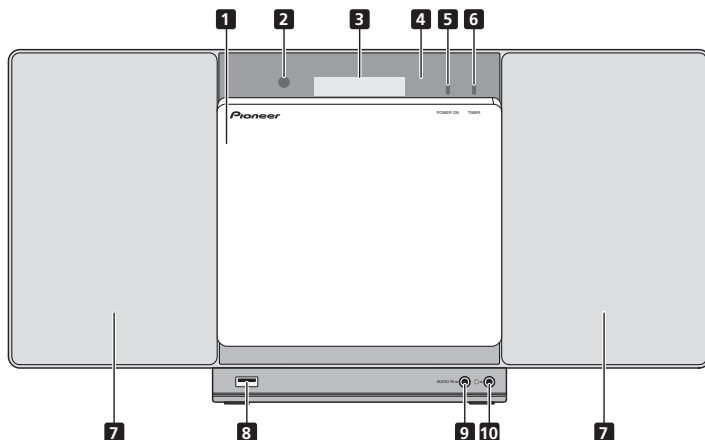


#### Note

- When attaching the unit to the wall, there is the possibility of it falling depending on how it is attached. Take due care to avoid any accidents.
- Select a location for the placement/installation of unit that is sufficiently strong enough to hold the weight of the unit. If you do not know the strength etc. of the wall, then consult with a professional.
- The company bears no responsibility for accidents or damages caused by inadequate installation/attachment, incorrect use, modifications, natural disasters etc.
- Place all cables along the wall to prevent anyone from tripping over them.
- Do not exchange the changeable panel while the unit is hanging from a wall.



## Front panel



### 1 Electric slide CD door

### 2 Remote sensor

Receives the signals from the remote control.

### 3 Main display

### 4 Display panel

### 5 POWER ON indicator

When the power is on, this indicator lights.

### 6 TIMER indicator

Lit when the unit power is off but when the timer setting is activated.

### 7 Speaker

### 8 USB terminal

Use to connect your USB mass storage device or Apple iPod/iPhone/iPad as an audio source (pages 15 and 21).

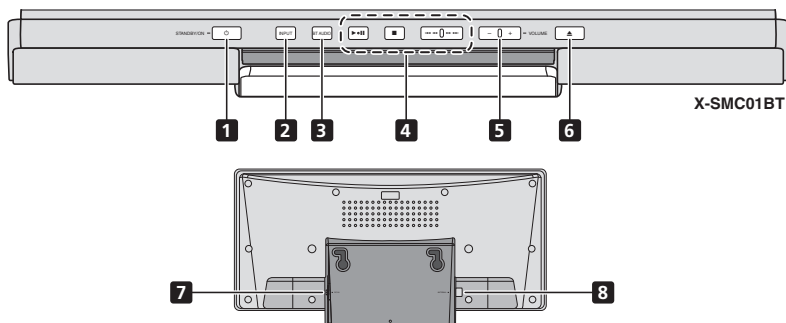
### 9 AUDIO IN socket

Use to connect an auxiliary component using a stereo minijack cable (page 26).

### 10 Headphone socket

Use to connect headphones. When the headphones are connected, there is no sound output from the speakers (page 14).

## Top panel/Rear panel



### 1 STANDBY/ON button

Switches the receiver between standby and on (page 12).

### 2 INPUT button

Selects the input source.

### 3 EQ button (X-SMC01)

Used when switching sound mode (page 13).

### BT AUDIO button (X-SMC01BT)

Used when playing back music from a device with *Bluetooth* functionality (page 27).

### 4 Playback control buttons

Select the desired track or file to be played back. Stop current playback. Stop playback or resume playback from the point where it was paused.

### 5 VOLUME +/-

Use to set the listening volume (page 12).

### 6 Disc tray open/close button

Use to open or close the electric slide CD door (page 17).

### 7 DC IN terminal

Plug the supplied AC adapter (page 11).

### 8 FM antenna socket

Connect provided FM wire antenna here (page 11).

## Chapter 3:

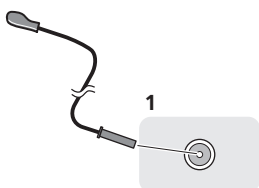
## Connections

**⚠ CAUTION**

- Be sure to turn off the power and unplug the power cord from the power outlet whenever making or changing connections.
- Connect the power cord after all the connections between devices have been completed.

**Connecting antenna**

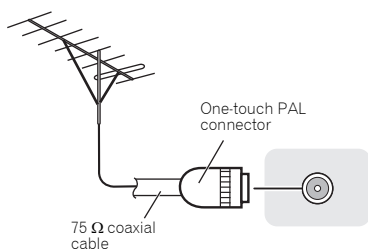
Connect the FM wire antenna as shown below. To improve reception and sound quality, connect external antennas (see *Using external antennas* below).

**1 Connect the FM wire antenna into the FM antenna socket.**

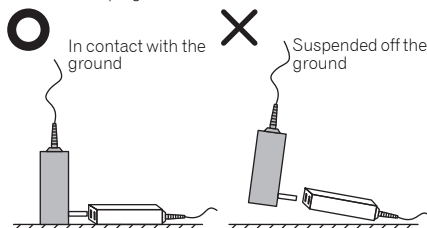
For best results, extend the FM antenna fully and fix to a wall or door frame. Don't drape loosely or leave coiled up.

**Using external antennas****To improve FM reception**

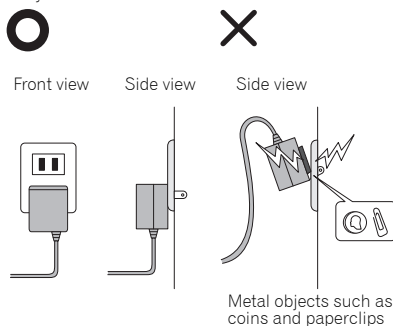
Use a PAL connector (not supplied) to connect an external FM antenna.

**Plugging in****⚠ CAUTION**

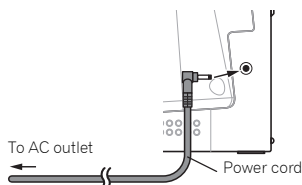
- Do not use any power cord other than the one supplied with this unit.
- Do not use the supplied power cord for any purpose other than that described below.
- The cord on the AC adaptor is 1.5 m long. Make sure that the body of the AC adaptor is not suspended off the ground during use, as this will place unnecessary force on the DC plug.



- When inserting the AC adaptor into a wall socket, make sure that there is no gap between the AC adaptor and the wall socket. Such a gap may cause a poor connection, and metal items like coins or paperclips falling into it may cause a short circuit and start a fire.



Connect the AC adaptor into a wall socket. Only connect the AC adaptor when all other connections to the unit have been completed.



## Chapter 4:

## Getting started

**To turn the power on**

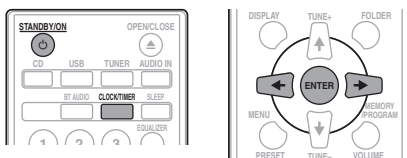
Press the **STANDBY/ON** to turn the power on.

**After use:**

Press the **STANDBY/ON** to enter the power stand-by mode.

**Note**

- In standby mode, if iPod/iPhone/iPad is connected, the unit turns charge mode.

**Setting the clock**

- 1 Press **STANDBY/ON** to turn the power on.
- 2 Press **CLOCK/TIMER** on the remote control. "CLOCK" is shown on the main display.
- 3 Press **ENTER**.
- 4 Press **←/→** to set the day, then press **ENTER**.
- 5 Press **←/→** to set the hour, then press **ENTER**.
- 6 Press **←/→** to set the minute, then press **ENTER** to confirm.
- 7 Press **ENTER**.

**To confirm the time display:**

Press the **CLOCK/TIMER**. The time display will appear for about 10 seconds.

**To readjust the clock:**

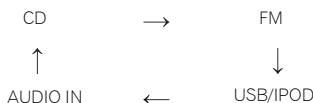
Perform "Setting the clock" from step 1.

**Note**

- When power supply is restored after unit is plugged in again or after a power failure, reset the clock.

**General control****Input function**

When the **INPUT** on main unit is pressed, the current function will change to different mode. Press the **INPUT** repeatedly to select desired function.

**X-SMC01****X-SMC01BT****Display brightness control**

Press **DIMMER** to dims the display brightness. The brightness can be controlled in four steps.

**Volume auto setting**

If you turn off and on the main unit with the volume set to 31 or higher, the volume starts at 30 and sets in to the last set level.

**Volume control**

Press the **VOLUME +/-** on the unit or press **VOLUME +/-** on the remote control to increase or decrease the volume.

**CAUTION**

- The sound level at a given volume setting depends on speaker efficiency, location, and various other factors. It is advisable to avoid exposure to high volume levels. Do not turn the volume on to full at switch on. Listen to music at moderate levels. Excessive sound pressure from earphones and headphones can cause hearing loss.

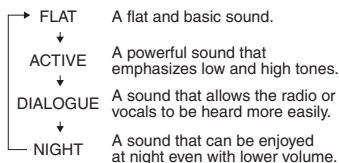
**Muting**

The volume is muted temporarily when pressing the **MUTE** on the remote control. Press again to restore the volume.

## Sound controls

### Equalizer

When the **EQUALIZER** is pressed, the current mode setting will be displayed. To change to a different mode, press the **EQUALIZER** repeatedly until the desired sound mode appears.



### P.BASS control

When the power is first turned on, the unit will enter the **P.BASS** mode which emphasises the bass frequencies. To cancel the **P.BASS** mode, press the **P.BASS** on the remote control.

### Bass/treble control

Press the **BASS/TREBLE**, then press **↑/↓/←/→** to adjust the bass or treble.

#### Note

- The **EQUALIZER** and **P.BASS** cannot operate simultaneously. The most recently selected of these two functions will be the one used.
- **BASS/TREBLE** can operate alongside either the **EQUALIZER** or **P.BASS**.

**When one of the above two functions is selected, the function that is not selected will be displayed as follows.**

- 1 When **P.BASS** setting (ON/OFF) is changed
  - **EQUALIZER** : FLAT
- 2 When **EQUALIZER** setting is changed
  - **P.BASS** : OFF

## Setting the wake-up timer

Used to change the existing timer setting, or to set a new timer.

- 1 Press **⏻** **STANDBY/ON** to turn the power on.
- 2 Press and hold **CLOCK/TIMER**.
- 3 Press **←/→** to select "**ONCE**" or "**DAILY**", then press **ENTER**.
  - ONCE** – Works once only at a preset time.
  - DAILY** – Works at the preset time on a preset day.
- 4 Press **←/→** to select "**TIMER SET**", then press **ENTER**.
- 5 Press **←/→** to select the timer playback source, then press **ENTER**.
  - **CD, FM, USB/IPOD, BT AUDIO** (X-SMC01BT only) and **AUDIO IN** can be selected as the playback source.
- 6 Press **←/→** to select the timer day, then press **ENTER**.
- 7 Press **←/→** to set the hour, then press **ENTER**.
- 8 Press **←/→** to set the minute, then press **ENTER**.
  - Set the time to finish as in steps 7 and 8 above.
- 9 Adjust the volume press **VOLUME +/-**, then press **ENTER**.
- 10 Press **⏻** **STANDBY/ON** to enter the power standby mode.
  - The **TIMER** indicator lights up.

### Calling the wake-up timer

An existing timer setting can be reused.

- 1 Follow steps 1 to 3 in "Setting the wake-up timer".
- 2 Press **←/→** to select "TIMER ON", then press **ENTER**.

### Cancelling the wake-up timer

Turn off the timer setting.

- 1 Follow steps 1 to 3 in "Setting the wake-up timer".
- 2 Press **←/→** to select "TIMER OFF", then press **ENTER**.

### Using the wake-up timer

- 1 Press **⏻** STANDBY/ON to turn the power off.
- 2 At the wake-up time, this unit will turn on automatically and play the selected input function.



#### Note

- If at the wake-up time an iPod/iPhone/iPad is not connected to the unit or a disc is not inserted, the unit will be turned on but will not play back the track.
- Some discs may not be played automatically at the wake-up time.
- When setting the timer set at least one minute between the start and end time.

### Using the sleep timer

The sleep timer switches off the unit after a specified time so you can fall asleep without worrying about it.

- 1 Press **SLEEP** repeatedly to select a switch off time.

Choose between 10 min, 20 min, 30 min, 60 min, 90 min, 120 min, 150 min, 180 min or OFF. The newly set value displays for 3 seconds, and then the setting is completed.



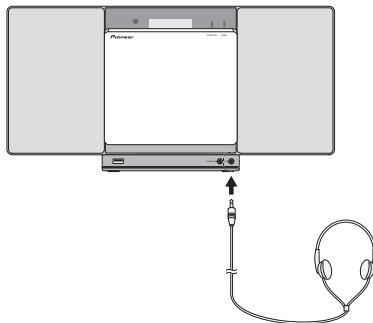
#### Note

- The sleep timer can be set by pressing **SLEEP** while the remaining time is displayed.

### Using Headphones

Connect the headphones plug to the **PHONES** terminal.

When the headphones are connected, there is no sound output from the speakers.



- Do not turn the volume on to full at switch on and listen to music at moderate levels. Excessive sound pressure from earphones and headphones can cause hearing loss.
- Before plugging in or unplugging the headphone, reduce the volume.
- Be sure your headphone has a 3.5 mm diameter plug and impedance between 16  $\Omega$  and 50  $\Omega$ . The recommended impedance is 32  $\Omega$ .

## Chapter 5:

## iPod/iPhone/iPad playback

Merely by connecting your iPod/iPhone/iPad to this unit, you can enjoy high-quality sound from your iPod/iPhone/iPad. Playback setting for iPod/iPhone/iPad music can be performed from this unit or the iPod/iPhone/iPad itself.

- This unit cannot be used to record CD, tuner or other content on an iPod/iPhone/iPad.

### Confirming what iPod/iPhone/iPad models are supported

The iPod/iPhone/iPad playable on this unit are shown below.

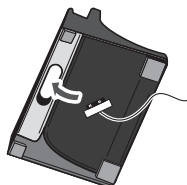
iPod/iPhone/iPad	USB Terminal (Audio only)
iPod nano 3G/4G/5G/6G/7G	✓
iPod touch 1G/2G/3G/4G/5G	✓
iPhone	✓
iPhone 3G	✓
iPhone 3GS	✓
iPhone 4	✓
iPhone 4s	✓
iPhone 5	✓
iPhone 5s	✓
iPhone 5c	✓
iPad mini	✓
iPad (3/4G)	✓
iPad 2	✓
iPad	✓

#### Note

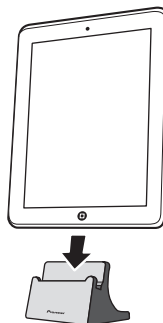
- Pioneer does not guarantee that this unit plays iPod/iPhone/iPad models other than the ones specified.
- Some functions may be restricted depending on the model or software version.
- iPod/iPhone/iPad is licensed for reproduction of non-copyrighted materials or materials the user is legally permitted to reproduce.
- Features such as the equalizer cannot be controlled using this system, and we recommend switching the equalizer off before connecting.
- Pioneer cannot under any circumstances accept responsibility for any direct or indirect loss arising from any inconvenience or loss of recorded material resulting from iPod/iPhone/iPad failure.
- For detailed instructions on using the iPod/iPhone/iPad, please refer to the manual supplied with the iPod/iPhone/iPad.
- This system has been developed and tested for the software version of iPod/iPhone/iPad indicated on the website of Pioneer (<http://pioneer.jp/homeav/support/ios/eu/>).
- Installing software versions other than indicated on the website of Pioneer to your iPod/iPhone/iPad may result in incompatibility with this system.

### Connecting iPod/iPhone/iPad using supplied iPad stand

- 1 Connect the iPod/iPhone/iPad cable to the USB terminal on the front of the unit.
- 2 Pass the iPod/iPhone/iPad cable through the bottom of the stand and connect it to the iPod/iPhone/iPad.



- 3 Set the iPod/iPhone/iPad on the stand.



## Playing iPod/iPhone/iPad

### 1 Connect your iPod/iPhone/iPad.

- If an iPod/iPhone/iPad is connected while the unit is turned on, playback of the iPod/iPhone/iPad will not begin.

### 2 Press USB as the input source.

"USB/IPOD" is shown on the main display.

### 3 When the recognition is completed, will begin playing automatically.



#### Note

- For detailed instructions on using the iPod/iPhone/iPad, please refer to the manual supplied with the iPod/iPhone/iPad.
- iPod/iPhone/iPad recharging occurs whenever an iPod/iPhone/iPad is connected to this unit. (This function is supported in standby mode as well.)
- When input is switched from iPod to another function, iPod/iPhone/iPad playback is temporarily stopped.
- When iPod/iPhone/iPad is not playing and no operations have been performed for more than 20 minutes, the unit will automatically power off.
- Auto power off can be switched to **ON/OFF** (page 35).



#### Important

If this unit cannot play your iPod/iPhone/iPad, perform the following troubleshooting checks:

- Check whether the iPod/iPhone/iPad is supported by this unit.
- Reconnect the iPod/iPhone/iPad to the unit. If this doesn't seem to work, try resetting your iPod/iPhone/iPad.
- Check that iPod/iPhone/iPad software is supported by the unit.

If the iPod/iPhone/iPad cannot be operated, check the following items:

- Is the iPod/iPhone/iPad connected correctly? Reconnect the iPod/iPhone/iPad to the unit.
- Is the iPod/iPhone/iPad experiencing a hangup? Try resetting the iPod/iPhone/iPad, and reconnect it to the unit.



## Chapter 6:

## Disc playback

This system can play back a standard CD, CD-R/RW in the CD format and CD-R/RW with MP3 or WMA files, but cannot record on them. Some audio CD-R and CD-RW discs may not be playable due to the state of the disc or the device that was used for recording.

**MP3:**

MP3 is a form of compression. It is an acronym which stands for MPEG Audio Layer 3. MP3 is a type of audio code which is processed by significant compression from the original audio source with very little loss in sound quality.

- This system supports MPEG-1/2 Audio Layer 3 (Sampling rates: 8 kHz to 48 kHz; Bit rates: 64 kbps to 384 kbps).
- During VBR file playback, time counter in the display may differ from its actual playback time.

**WMA:**

WMA (Windows Media Audio) files are Advanced System Format files that include audio files which are compressed with Windows Media Audio codec. WMA is developed by Microsoft as an audio format file for Windows Media Player.

- This system supports WMA (Sampling rates: 32 kHz/44.1 kHz/48 kHz; Bit rates: 64 kbps to 320 kbps).
- During VBR file playback, time counter in the display may differ from its actual playback time.

## Playing discs or files

1 Press **⏻** STANDBY/ON to turn the power on.

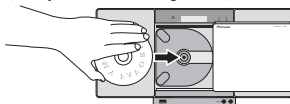
2 Press **CD** on the remote control or **INPUT** repeatedly on the main unit to select CD input.

3 Press **▲** OPEN/CLOSE to open the electric slide CD door.

4 Insert the disc.

Insert the disc with the printed label facing outward (you can see it).

Insert the disc while pressing down on it until the centre of the disc is held in place (until you hear a clicking sound).



5 Press **▲** OPEN/CLOSE to close the electric slide CD door.

6 Press **▶II** to start playback.

After the last track is played, the unit will stop automatically.

**⚠ CAUTION**

- Do not touch the lens.
- Be careful not to get your hand or headphone cable caught when opening and closing the slide door.
- Do not insert two or more discs into the disc tray at once.
- Do not play discs of special shapes (heart, octagon, etc). It may cause malfunctions.
- Do not touch the electric slide CD door when it is moving.
- If power is lost while the electric slide CD door is open, wait until the power is restored.

**📌 Note**

- Due to the structure of the disc information, it takes longer to read an MP3/WMA disc than a normal CD (approximately 20 to 90 seconds).
- When the beginning of the first track is reached during fast reverse, the unit will enter the playback mode (only for CD).
- If TV or radio interference occurs during CD operation, move the unit away from the TV or radio.

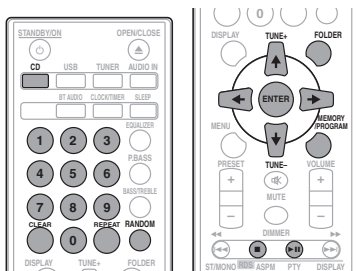
**⚙ Tip**

- When no operation has done in CD mode and the audio file is not played for more than 20 minutes, the power will automatically turn off.
- Auto power off can be switched to **ON/OFF** (page 35).

## Various disc functions

Function	Main unit	Remote control	Operation
Play			Press in the stop mode.
Stop			Press in the playback mode.
Pause			Press in the playback mode. Press <b>▶II</b> to resume playback from the paused point.
Track up/down			Press in the playback or stop mode. If you press the button in the stop mode, press <b>▶II</b> to start the desired track.
Fast forward/reverse			Press and hold down in the playback mode. Release the button to resume playback.

## Advanced CD or MP3/WMA disc playback



### Direct track search

By using the numeric buttons, the desired tracks on the current disc can be played.

**Use the numeric buttons on the remote control to select the desired track whilst playing the selected disc.**

#### Note

- A track number higher than the number of tracks on the disc cannot be selected.

### To stop playback:

Press ■.

### Repeat play

Repeat play can play one track, all tracks or a programmed sequence continuously.

#### To repeat one track:

Press **REPEAT** repeatedly until "RPT ONE" appears. Press **ENTER**.

#### To repeat all tracks:

Press **REPEAT** repeatedly until "RPT ALL" appears. Press **ENTER**.

#### To repeat desired tracks:

Perform steps 1 to 5 in "Programmed play (CD or MP3/WMA)" section on next page and then press **REPEAT** repeatedly until "RPT ALL" appears. Press **ENTER**.

#### To cancel repeat play:

Press **REPEAT** repeatedly until "RPT OFF" appears. Press **ENTER**.

#### Note

- After performing repeat play, be sure to press ■. Otherwise, the disc will play continuously.
- During repeat play, random play is not possible.

### Random play

The tracks on the disc can be played in random order automatically.

#### To random play all tracks:

Press **RANDOM** repeatedly until "RDM ON" appears. Press **ENTER**.

#### To cancel random play:

Press **RANDOM** repeatedly until "RDM OFF" appears. Press **ENTER**.

#### Note

- In random play, the unit will select and play tracks automatically. (You cannot select the order of the tracks.)
- During random play, repeat play is not possible.

## Programmed play (CD or MP3/WMA)

You can choose up to 32 selections for playback in the order you like.

- 1 Whilst in the stop mode, press **MEMORY/PROGRAM** on the remote control to enter the programming save mode.
- 2 Press **◀◀ ▶▶** or the numeric buttons on the remote control to select the desired tracks.
- 3 Press **ENTER** to save folder and track number.
- 4 Repeat steps 2 to 3 for other folder/tracks. Up to 32 tracks can be programmed.
  - If you want to check the programmed tracks, press **MEMORY/PROGRAM**.
  - If you make a mistake, the last programmed tracks will be canceled by pressing **CLEAR**.
- 5 Press **▶II** to start playback.

### To cancel the programmed play mode:

To cancel the programmed play, press **■** twice on the remote control. The display will show "PRG CLR" and all the programmed content will be cleared.

### Adding tracks to the program:

Press the **MEMORY/PROGRAM**. Then follow steps 2 to 3 to add tracks.

#### Note

- When a disc is ejected anything programmed is cleared.
- If you press the **⏻** **STANDBY/ON** to enter the standby mode or change the function from **CD** to another, the programmed selections will be cleared.
- During the program operation, random play is not possible.

## About downloading MP3/WMA

There are many music sites on the internet that you can download MP3/WMA music files. Follow the instructions from the website on how to download the music files. You can then play back these downloaded music files by burning them to a CD-R/RW disc.

- Your downloaded song/files are for personal use only. Any other usage of the song without owner's permission, is against the law.

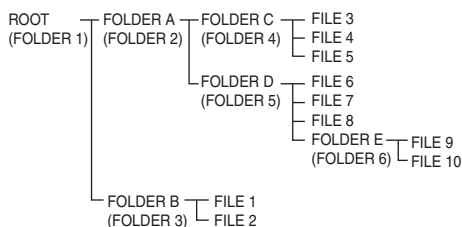
## About folder playback order

If MP3/WMA files are recorded in several folders, a folder number will be set to each folder automatically.

These folders can be selected by the **FOLDER** on the remote control. If there is no supported file formats inside the selected folder, the folder is skipped and the next folder will be selected.

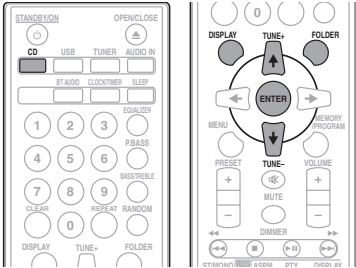
Example: How the folder numbers are assigned if MP3/WMA format files are recorded are as shown below.

- 1 **ROOT folder is set as FOLDER 1.**
- 2 **As for folders inside ROOT folder (FOLDER A and FOLDER B), the folder which is recorded earlier on the disc will be set as FOLDER 2 and FOLDER 3.**
- 3 **As for folder inside FOLDER A (FOLDER C and FOLDER D), the folder which is recorded earlier on the disc will be set as FOLDER 4 and FOLDER 5.**
- 4 **FOLDER E that is inside FOLDER D will be set as FOLDER 6.**
  - The folder and file order information which is recorded on the disc depends on the writing software. There maybe possibilities that this unit will playback the files not according to our expected playback order.
  - From a disc with MP3/WMA files up to 255 folders and 999 files (including non playable files) can be read.



**Specify the folder to play**

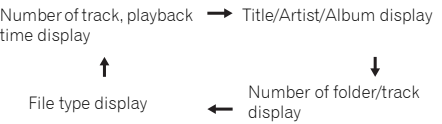
To specify the folder to play, perform the following steps.



- 1 Press CD, and load an MP3/WMA disc.
- 2 Press FOLDER, and press **↑/↓** to select desired playback folder.
- 3 Press ENTER.
- Playback will start from the first song of the selected folder.
- Even if it is stopped, it is possible to press **↑/↓**, to select a folder.

**Switch the display contents**

- 1 Press DISPLAY.
- If the title, artist and album name has been written to the file, that information will be displayed. (The unit can only display alphanumeric characters. Non-alphanumeric character are displayed as "\*\*".)



- Note**
- "Copyright protected WMA files" or "Unsupported files" cannot be played back. In these case the files will be skipped automatically.
  - There may be cases where no information can be displayed.
  - Displaying title, artist and album name is only supported for MP3 files.

## Chapter 7: USB playback

### Playing USB storage devices

It is possible to listen to two-channel audio using the USB interface on the front of this receiver.

- Pioneer does not guarantee that any file recorded on a USB storage device will play or that power will be supplied to a USB storage device. Also note that Pioneer will accept no responsibility whatsoever for loss of files on USB storage devices caused by connection to this unit.

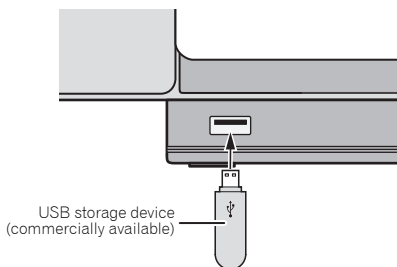
#### 1 Press USB as the input source.

"**USB/iPOD**" is shown on the main display.

#### 2 Connect the USB storage device.

The number of folders or files stored on the connected USB storage device appear on the main display automatically.

- This receiver does not support a USB hub.
- If an iPod/iPhone/iPad is connected to the unit, the unit will automatically begin charging it.



#### 3 When the recognition is completed, press ► to start playback.

- When changing to a different input source, stop the USB memory playback first, before changing.

#### 4 Disconnect USB storage device from the USB terminal.

Turn the power off before removing the USB storage device.

#### Note

- USB flash drive that supports USB 2.0 can be used.
- This unit may not recognize a USB storage device, play files or supply power to a USB storage device. For details, see *When a USB storage device is connected* on page 32.
- When a USB storage device is not playing and no operations have been performed for more than 20 minutes, the unit will automatically power off.
- Auto power off can be switched to **ON/OFF** (page 35).

### Repeat play

Repeat play can play one track, all tracks or a programmed sequence continuously.

#### To repeat one track:

Press **REPEAT** repeatedly until "RPT ONE" appears. Press **ENTER**.

#### To repeat all tracks:

Press **REPEAT** repeatedly until "RPT ALL" appears. Press **ENTER**.

#### To repeat desired tracks:

Perform steps 1 to 5 in "Programmed play (CD or MP3/WMA)" section on next page and then press **REPEAT** repeatedly until "RPT ALL" appears. Press **ENTER**.

#### To cancel repeat play:

Press **REPEAT** repeatedly until "RPT OFF" appears. Press **ENTER**.

#### Note

- After performing repeat play, be sure to press **■**. Otherwise, the file of USB storage device will play continuously.
- During repeat play, random play is not possible.

### Random play

The file of USB storage device can be played in random order automatically.

#### To random play all tracks:

Press **RANDOM** repeatedly until "RDM ON" appears. Press **ENTER**.

#### To cancel random play:

Press **RANDOM** repeatedly until "RDM OFF" appears. Press **ENTER**.

#### Note

- In random play, the unit will select and play tracks automatically. (You cannot select the order of the tracks.)
- During random play, repeat play is not possible.

**Specify the folder to play**

To specify the folder to play, perform the following steps.

**1 Press USB, and connect the USB storage device.**

**2 Press FOLDER, and press ↑/↓ to select desired playback folder.**

**3 Press ENTER.**

Playback will start from the first song of the selected folder.

- Even if it is stopped, it is possible to press ↑/↓, to select a folder.

**Switch the display contents**

The unit can display the information recorded in the USB storage device. For details, see *Switch the display contents* on page 20.

---

**Playing in the desired order  
(Programmed Play)**

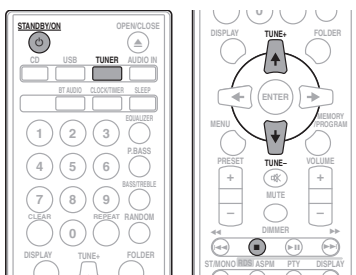
The unit can play folders stored on a USB storage device in the desired order. For details, see *Programmed play (CD or MP3/WMA)* on page 19.

## Chapter 8:

## Using the tuner

## Listening to the radio broadcasts

The following steps show you how to tune in to FM radio broadcasts using the automatic (search) and manual (step) tuning functions. Once you are tuned to a station you can memorize the frequency for recall later. See *Saving station presets* below for more on how to do this.



## Tuning

- 1 Press the **STANDBY/ON** to turn the power on.
- 2 Press **TUNER**.
- 3 Press **TUNE +/-** on the remote control to tune in to the desired station.

## Automatic tuning:

Press and hold **TUNE +/-**, scanning will start automatically and the tuner will stop at the first receivable broadcast station.

## Manual tuning:

Press the **TUNE +/-** repeatedly to tune in to the desired station.

## Note

- When radio interference occurs, automatic tuning may stop automatically at that point.
- Automatic tuning will skip weak signal stations.
- To stop the automatic tuning, press ■.
- When an RDS (Radio Data System) station is tuned in, the frequency will be displayed first. Finally, the station name will appear.
- Full auto tuning can be achieved for RDS stations using Auto Station Program Memory (ASPM) mode, see page 25.

## To receive an FM stereo transmission:

- Press **ST/MONO** to select stereo mode and "AUTO" will be displayed.

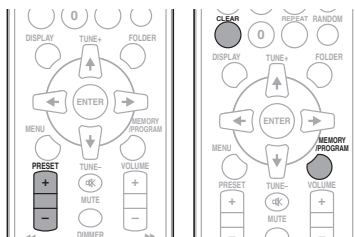
## Improving poor FM reception:

## 1 Press ST/MONO repeatedly to select MONO.

This will change the tuner from stereo to mono and usually improve the reception.

## Saving station presets

If you often listen to a particular radio station, it's convenient to have the receiver store the frequency for easy recall whenever you want to listen to that station (Preset tuning). This saves the effort of manually tuning in each time. This unit can memorize up to 30 stations.



## 1 Tune to a station you want to memorize.

See *Tuning* above for more on this.

## 2 Press MEMORY/PROGRAM.

The preset number will flash.

## 3 Press PRESET +/- to select the preset channel number.

## 4 Press MEMORY/PROGRAM to store that station in memory.

If the preset number has changed from flashing to lighting, before the station is memorised, repeat the operation from step 2.

- Repeat steps 1 to 4 to set other stations, or to change a preset station. When a new station is stored in the memory, the station previously memorised for that preset channel number will be erased.

## Note

- The backup function protects the memorised stations for a few hours should there be a power failure or the AC power cord become disconnected.

### To recall a memorised station

- 1 Press **PRESET +/-** to select the desired station.

### To scan the preset stations

The stations saved in the memory can be scanned automatically. (Preset memory scan)

- 1 Press and hold **PRESET +/-**.

The preset number will appear and the programmed stations will be tuned in sequentially, for 5 seconds each.

- 2 Press **PRESET +/-** again when the desired station is located.

### To erase entire preset memory

- 1 Press **TUNER** on the remote control.
- 2 Press **CLEAR** until "MEM CLR" appears.



#### Note

- All stations will be erased.

## Using the Radio Data System (RDS)

### An introduction to RDS

Radio Data System (RDS) is a system used by most FM radio stations to provide listeners with various kinds of information—the name of the station and the kind of show they're broadcasting, for example.

One feature of RDS is that you can search by type of program. For example, you can search for a station that's broadcasting a show with the program type, **JAZZ**.

You can search the following program types:

**NEWS** – News

**AFFAIRS** – Current Affairs

**INFO** – General Information

**SPORT** – Sport

**EDUCATE** – Educational

**DRAMA** – Radio plays, etc.

**CULTURE** – National or regional culture, theater, etc.

**SCIENCE** – Science and technology

**VARIED** – Usually talk-based material, such as quiz shows or interviews.

**POP M** – Pop music

**ROCK M** – Rock music

**EASY M** – Easy listening

**LIGHT M** – 'Light' classical music

**CLASSICS** – 'Serious' classical music

**OTHER M** – Music not fitting above categories

**WEATHER** – Weather reports

**FINANCE** – Stock market reports, commerce, trading, etc.

**CHILDREN** – Programs for children

**SOCIAL** – Social affairs

**RELIGION** – Programs concerning religion

**PHONE IN** – Public expressing their views by Phone

**TRAVEL** – Holiday-type travel rather than traffic announcements

**LEISURE** – Leisure interests and hobbies

**JAZZ** – Jazz

**COUNTRY** – Country music

**NATION M** – Popular music in a language other than English

**OLDIES** – Popular music from the '50s and '60s

**FOLK M** – Folk music

**DOCUMENT** – Documentary

**TEST** – Broadcasting when testing emergency broadcast equipment or receivers.

**ALARM** – Emergency announcement made under exceptional circumstances to give warning of events causing danger of a general nature.

### Searching for RDS programs

You can search a program type listed above.

- 1 Press **TUNER** on the remote control.

- RDS is only possible in the FM.

- 2 Press **RDS PTY** on the remote control.

"SELECT" will appear for about 6 seconds.

- 3 Press **←/→** to select the program type you want to hear.

Each time the button is pressed, the program type will appear. If the button is held down, the program type will appear continuously.

- 4 Whilst the selected program type is displayed (within 6 seconds), Press **RDS PTY** again.

After the selected program type has been lit for 2 seconds, "SEARCH" will appear, and the search operation will start.



#### Note

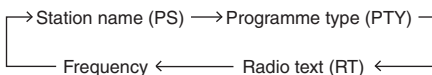
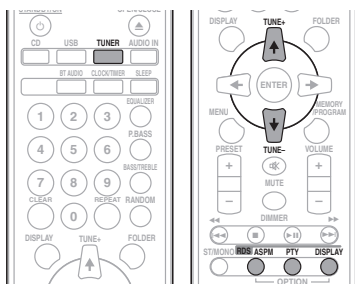
- If the display has stopped flashing, start again from step 2. If the unit finds a desired program type, the corresponding channel number will be lit for about 8 seconds, and then the station name will be displayed.
- If you want to listen to the same program type of another station, press the **RDS PTY** whilst the channel number or station name is flashing. The unit will look for the next station.



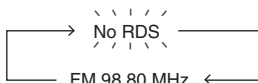
- If no station can be found, "NO FOUND" will appear for 4 seconds.

## Information provided by RDS

Each time the **RDS DISPLAY** is pressed, the display will switch as follows:



When tuning in to a station other than an RDS station or to an RDS station which sends weak signal, the display will change in the following order:



## Using the Auto Station Program Memory (ASPM)

Whilst in the ASPM operation mode, the tuner will automatically search for new RDS stations. Up to 30 stations can be stored.

If you have already stored some stations in memory, the number of new stations you can store will be less.

### 1 Press TUNER on the remote control.

### 2 Press and hold down RDS ASPM on the remote control.

After "**ASPM**" has flashed for about 4 seconds, scanning will start (87.5 MHz to 108 MHz).

After scanning, the number of stations stored in memory will be displayed for 4 seconds, and then "END" will appear for 4 seconds.

### To stop the ASPM operation before it is complete:

Press **■** whilst it is scanning for stations. The stations which are already stored in memory will be kept there.

### Note

- If the same station is broadcasting on different frequencies, the strongest frequency will be stored in memory.
- Any station which has the same frequency as the one stored in memory will not be stored.
- If 30 stations have already been stored in memory, the scan will be aborted. If you want to redo the ASPM operation, erase the preset memory.
- If no station have been stored in memory, "END" will appear for about 4 seconds.
- If the RDS signals are very weak, station names may not be stored in memory.
- The same station name can be stored in different channels.
- In a certain area or during certain time periods, the station names may temporarily be different.

## Notes for RDS operation

**If any of the following events occur, it does not mean that the unit is faulty:**

- "PS", "No PS" and a station name appear alternately, and properly.
- If a particular station is not broadcasting properly or a station is conducting tests, the RDS reception function may not work properly.
- When you receive an RDS station whose signal is too weak, information like the station name may not be displayed.
- "No PS", "No PTY" or "No RT" will flash for about 5 seconds, and then the frequency will be displayed.

### Notes for radio text:

- The first 8 characters of the radio text will appear and then they will scroll across the display.
- If you tune in to an RDS station which is not broadcasting any radio text, "No RT" will be displayed when you switch to the radio text position.
- Whilst radio text data is received or when the text contents change, "RT" will be displayed.

## Chapter 9:

## Other connections

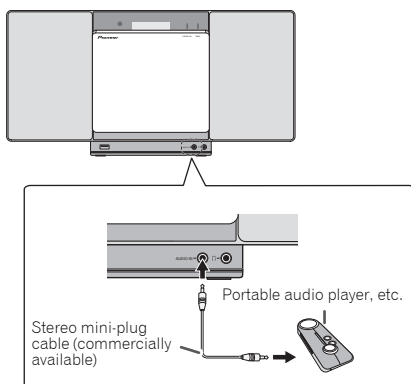
## ⚠ CAUTION

- Before making or changing the connections, switch off the power and disconnect the power cord from the AC outlet.

## Connecting auxiliary components

Connect the front panel **AUDIO IN** mini-plug jack to your auxiliary playback component.

- This method can be used to play music on this unit from iPod/iPhone/iPad that do not support use of an USB terminal.



### 1 Switch input by pressing the **INPUT** on the main unit or the **AUDIO IN** on the remote control.

When **INPUT** is selected "**AUDIO IN**" will be displayed on the main display.

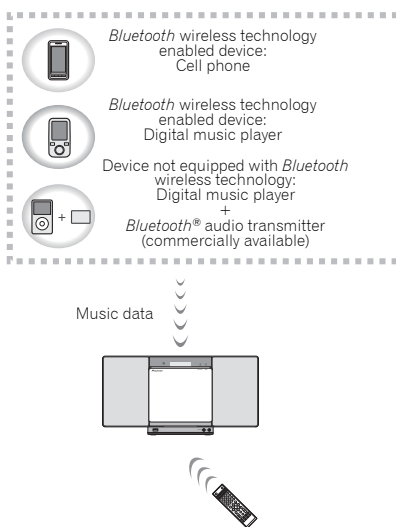
## 📌 Note

- If the **AUDIO IN** mini-plug jack is connected to auxiliary phones jack, the volume of the unit will be adjusted by the volume on the playback component. If the sound is distorted after you lower the volume of the unit, try lowering the volume on the auxiliary playback component.

## Chapter 10:

# Bluetooth® Audio playback (X-SMC01BT only)

## Music playback using Bluetooth wireless technology



The unit is capable of playing back music stored on *Bluetooth* capable devices (cell phones, digital music players etc.) wirelessly. You can also use a *Bluetooth* audio transmitter (sold separately) to enjoy music from devices that do not have *Bluetooth* functionality. Please refer to the user's manual for your *Bluetooth* capable device for more details.

### Note

- The *Bluetooth*® word mark and logos are registered trademarks owned by Bluetooth SIG, Inc. and any use of such marks by PIONEER CORPORATION is under license. Other trademarks and trade names are those of their respective owners.
- The *Bluetooth* wireless technology enabled device must support A2DP profiles.
- Pioneer does not guarantee proper connection and operation of this unit with all *Bluetooth* wireless technology enabled devices.

## Remote control operation

The remote control supplied with this unit allows you to play and stop media, and perform other operations.

### Note

- The *Bluetooth* wireless technology enabled device must support AVRCP profiles.
- Remote control operations cannot be guaranteed for all *Bluetooth* wireless technology enabled devices.

## Pairing with the unit (Initial registration)

In order for the unit to playback music stored on a *Bluetooth* capable device, pairing must first be performed. Pairing should be performed when first using the unit with the *Bluetooth* capable device, or when the pairing data on the device has been erased for any reason.

Pairing is a step required to allow communication using *Bluetooth* wireless technology to be carried out.

- Pairing is only performed the first time that you use the unit and the *Bluetooth* capable device together.
- In order to allow communication using *Bluetooth* wireless technology to take place, pairing must be performed on both the unit and the *Bluetooth* capable device.
- After pressing the **BT AUDIO** and switching to **BT AUDIO** input, perform the pairing procedure on the *Bluetooth* capable device. If pairing has been performed correctly, you will not need to perform the pairing procedures for the unit as shown below.

Please refer to the user's manual for your *Bluetooth* capable device for more details.

**1 Press the STANDBY/ON and turn the power to the unit on.**

**2 Press the BT AUDIO.**

The unit switches to **BT AUDIO** and **PAIRING** will be displayed.

**3 Turn on the power to the *Bluetooth* capable device that you wish to pair with, and perform pairing procedure on it.**

### Note

- This unit will be displayed as "X-SMC01" on all *Bluetooth* capable devices that you have.

Pairing will start.

- Place the *Bluetooth* capable device close to the unit.

- Please refer to the user's manual for your *Bluetooth* capable device for details on when pairing can be performed and the procedures required for pairing.
- When PIN code entry is requested, enter "0000". (This unit does not accept any PIN code setting other than "0000".)

#### 4 Confirm on the *Bluetooth* capable device that pairing has been completed.

If pairing with the *Bluetooth* capable device has been completed correctly, the name of the *Bluetooth* capable device will be displayed on the front panel of the unit. (Only single-byte alphanumeric characters can be displayed. Any character that cannot be displayed will be indicated by a "\*\*".)

### Listen to music on the unit from a *Bluetooth* capable device

#### 1 Press the BT AUDIO.

The unit will switch to **BT AUDIO** input.

#### 2 A *Bluetooth* connection will be created between the *Bluetooth* capable device and the unit.

Procedures for connecting to the unit should be performed from the *Bluetooth* capable device.

- Please refer to the user's manual for your *Bluetooth* capable device for details of the connection procedures.

#### 3 Playback music from the *Bluetooth* capable device.

#### Note

- When *Bluetooth* capable device is not playing and no operations have been performed for more than 20 minutes, the unit will automatically power off.
- Auto power off can be switched to **ON/OFF** (page 35).

### **BT STANDBY**

The following can be done when the unit is on standby with the **BT AUDIO** switched **ON**.

By selecting a *Bluetooth* capable device that already has a connection history (pairing has already been conducted) with this unit, this unit will automatically turn on with the **BT AUDIO** function.

#### **BT STANDBY settings**

Switch **ON/OFF** by long pressing the **BT AUDIO** button located on the top of the unit for 3 seconds.

The setting operation can only be performed by using the **BT AUDIO** button on the unit. The setting cannot be performed using the remote control.

#### Note

- When the **BT STANDBY** is **ON**, "BT STANDBY ON" is displayed on the main display.

- When the **BT STANDBY** is **OFF**, "BT STANDBY OFF" is displayed on the main display.

#### **Connection while in BT STANDBY mode with *Bluetooth* capable device**

When connection history (pairing has already been conducted) with a *Bluetooth* capable device exists for the unit during **BT STANDBY**, the unit can receive a connection request directly from the connection history.

The unit will start using the **BT AUDIO** function, and connect with a *Bluetooth* capable device.

Even devices that have already been paired with this unit will not connect during **BT STANDBY** in the following cases.

In such cases, delete pairing history from the *Bluetooth* wireless technology device and perform pairing again.

- Up to 8 pairing history can be recorded with this unit. If connecting to a *Bluetooth* wireless technology device over 8 units, the oldest pairing history will be deleted.
- If the settings are reset to the factory setting, all pairing history will be deleted.

## Radio wave caution

This unit uses a 2.4 GHz radio wave frequency, which is a band used by other wireless systems (see list below). To prevent noise or interrupted communication, do not use this unit nearby such devices, or make sure these devices are switched off during use.

- Cordless phones
- Cordless facsimiles
- Microwave ovens
- Wireless LAN devices (IEEE802.11b/g)
- Wireless AV equipment
- Wireless controllers for game systems
- Microwave-based health aids
- Some baby monitors

Other, less common, equipment that may operate on the same frequency:

- Anti-theft systems
- Amateur radio stations (HAM)
- Warehouse logistic management systems
- Discrimination systems for train or emergency vehicles



### Note

- In the event noise appears in your television image, there is the possibility that a *Bluetooth* wireless technology enabled device or this unit (including products supported by this unit) are causing signal interference with the antenna input connector of your television, video, satellite tuner, etc. In this event, increase the distance between the antenna input connector and the *Bluetooth* wireless technology enabled device or this unit (including products supported by this unit).
- If there is something obstructing the path between this unit (including devices supported by this unit) and the device equipped with *Bluetooth* wireless technology (such as a metal door, concrete wall, or insulation containing tinfoil), you may need to change the location of your system to prevent signal noise and interruptions.

## Scope of operation

Use of this unit is limited to home use. (Transmission distances may be reduced depending on communication environment).

In the following locations, poor condition or inability to receive radio waves may cause the audio to be interrupted or stopped:

- In reinforced concrete buildings or steel framed or iron-framed buildings.
- Near large metallic furniture.
- In a crowd of people or near a building or obstacle.
- In a location exposed to the magnetic field, static electricity or radio wave interference from radio communication equipment using the same frequency band (2.4 GHz) as this unit, such as a 2.4 GHz wireless LAN device (IEEE802.11b/g) or microwave oven.

- If you live in a heavily populated residential area (apartment, townhouse, etc.) and if your neighbor's microwave is placed near your system, you may experience radio wave interference. If this occurs, move your unit to a different place. When the microwave is not in use, there will be no radio wave interference.

## Radio wave reflections

The radio waves received by this unit include the radio wave coming directly from the device equipped with *Bluetooth* wireless technology (direct wave) and waves coming from various directions due to reflections by walls, furniture and building (reflected waves). The reflected waves (due to obstacles and reflecting objects) further produce a variety of reflected waves as well as variation in reception condition depending on locations. If the audio cannot be received properly due to this phenomenon, try moving the location of the device equipped with *Bluetooth* wireless technology a little. Also note that audio may be interrupted due to the reflected waves when a person crosses or approaches the space between this unit and the device equipped with *Bluetooth* wireless technology.

## Precautions regarding connections to products supported by this unit

- Complete connections for all devices supported by this unit, including all audio cords and power cables before connecting them to this unit.
- After completing connections to this unit, check the audio and power cables to confirm that they not twisted together.
- When disconnecting this unit, confirm that you have sufficient working space in the surrounding area.
- When changing connections of audio or other cables for products supported by this unit, confirm that you have sufficient working space in the surrounding area.

Chapter 11:

Additional information

Troubleshooting

Incorrect operations are often mistaken for trouble and malfunctions. If you think that there is something wrong with this component, check the points below. Sometimes the trouble may lie in another component. Investigate the other components and electrical appliances being used. If the trouble cannot be rectified even after exercising the checks listed below, ask your nearest Pioneer authorized service center or your dealer to carry out repair work.

- If the unit does not operate normally due to external effects such as static electricity disconnect the power plug from the outlet and insert again to return to normal operating conditions.

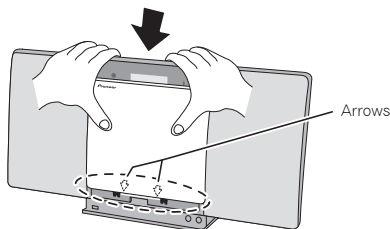
General problem

Problem	Check	Remedy
Settings you have made have been cleared.	Was the power cord unplugged?	When power cord is unplugged, the settings you have made is cleared. Please set the clock again. If you do not want to clear the settings, do not unplug the power cord.
Difference in volume between CDs, MP3, WMA, iPod/iPhone/iPad, Tuner and AUDIO IN.	This is not a problem with this unit.	The volume may sound differently depending on the input source and recording format.
This unit cannot be operated with the remote control.	Are you operating from far away?	Operate within 7 m, 30° of the remote sensor on the front panel (page 6).
	Is the remote control sensor exposed to direct sunlight or strong artificial light from a fluorescent bulb, etc.?	The remote control signals may not be received properly if the remote control sensor is exposed to direct sunlight or strong artificial light from a fluorescent bulb, etc.
	Are the batteries dead?	Replace the batteries (page 5).
Disc cannot be played.	Is the disc scratched?	Scratched discs may not play.
	Is the disc dirty?	Wipe the dirt off the disc (page 34).
	Is the disc inserted correctly?	Make sure that the printed label is facing outward, visible to you (page 17).
	Is this unit placed in a humid location?	There could be condensation inside. Wait a while for the condensation to evaporate. Do not place this unit near an air-conditioner, etc. (page 34).
Sound skips when the disc is played back.	Is the playback volume too loud?	If the sound skips when played back at a loud volume, reduce the playback volume (page 12).
Folder or file names are not recognized.	Have you exceeded the maximum number of folder or file names this unit can recognize?	Up to 255 folders can be recognized on one disc. Up to 999 files can be recognized within one folder. Depending on the folder structure, however, this unit may not be able to recognize certain folders or files.
The unit turns off automatically.		If no play back and no operation has done for 20 minutes or more, the unit turns off automatically. Auto power off can be switched to <b>ON/OFF</b> (page 35).

Problem	Check	Remedy
Unable to connect to a <i>Bluetooth</i> capable device, no sound comes out at all or sound cuts out when connected. (X-SMC01BT)	Are there any devices nearby that emit electromagnetic waves in the 2.4 GHz band (microwaves, wireless LAN devices, other <i>Bluetooth</i> capable devices etc.)?	If so, either move these devices away from the unit, or stop using other devices that emit electromagnetic waves.
	Is the <i>Bluetooth</i> capable device too far away from the unit, or is there something between them?	Place the <i>Bluetooth</i> capable device inside the same room, with no obstacles between them, and within a range of 10 m *. * Only a suggested range. The actual possible communication range may change depending upon the surrounding environment.
	Is the <i>Bluetooth</i> capable device set to a mode that allows for <i>Bluetooth</i> wireless communication?	Check the settings on the <i>Bluetooth</i> capable device.
	Has pairing not been completed successfully, or has either the unit or the <i>Bluetooth</i> capable device erased the previous pairing setting?	Perform the pairing operation again.
	Does the device you are trying to connect have a supported profile?	Please use a <i>Bluetooth</i> capable device that supports A2DP.

The panel for the electric slide CD door has fallen off.

It can be attached as follows.  
Align the line below the arrow and the bottom of the panel, then slide downward using both hands until you hear a clicking sound.



\* The panel is designed to be removable for repairs.

## Note

- If the panel is not attached correctly, the panel may not open or close properly. It may also cause irregular noise, so make sure the panel is positioned correctly.
- Disconnect from the AC outlet before attaching the panel.

### When a USB storage device is connected

Problem	Check	Remedy
USB storage device is not recognized.	Is the USB storage device properly connected?	Connect the device securely (all the way in).
	Is the USB storage device connected via a USB hub?	This unit does not support USB hubs. Connect the USB storage device directly.
	Is the USB storage device supported by this unit?	This unit only supports USB mass storage class devices.
		This unit supports portable flash memory and digital audio playback devices.
		Only the FAT16 and FAT32 file systems are supported. Other file systems (exFAT, NTFS, HFS etc.) are not supported.
		USB flash drive that supports USB 2.0 can be used.
	This is not a problem with this unit.	This device does not support the use of external hard disc drives.
		Turn the power off then back on.
File cannot be played.	Is the file copyright-protected (by DRM)?	Some USB storage devices may not be recognized properly.
		Copyright-protected files cannot be played.
	This is not a problem with this unit.	Files stored on a computer cannot be played.
Folder or file names are not displayed or are not properly displayed.	Do the folder or file names contain more than 30 characters?	It may not be possible to play some files.
		The maximum number of characters displayable for the folder and file names is 30.
Folder or file names are not displayed in alphabetical order.	This is not a problem with this unit.	The order in which the folder and file names are displayed depends on the order in which the folders or files were recorded on the USB storage device.
Much time is required to recognize the USB storage device.	What is the USB storage devices capacity?	Some time may be required to load the data when large capacity USB storage devices are connected (this could take several minutes).
Power is not supplied to the USB storage device.	Is <b>AUTH ERR</b> displayed on the front panel display? No power is supplied if the power consumption is too high.	Turn the power off then back on.
		Turn the power off, then disconnect and reconnect the USB storage device.
		Press <b>INPUT</b> to switch to the other mode, then switch again to the USB mode.

### When an iPod/iPhone/iPad is connected

Problem	Remedy
Can't operate the iPod/iPhone/iPad by the remote control.	Make sure the iPod/iPhone/iPad is connected correctly (refer to <i>Connecting iPod/iPhone/iPad using supplied iPad stand</i> on page 15).
Can't operate the iPod/iPhone/iPad.	Make sure the iPod/iPhone/iPad is connected correctly (refer to <i>Connecting iPod/iPhone/iPad using supplied iPad stand</i> on page 15). If the iPod/iPhone/iPad is experiencing a hangup, try resetting the iPod/iPhone/iPad, and reconnect it to the unit.



Playable discs and formats

Audio CD	<ul style="list-style-type: none"><li>Commercially available audio CDs</li><li>CD-R/ -RW/ -ROM discs containing music recorded in the CD-DA format</li></ul>
WMA	WMA files recorded on CD-R/ -RW/ -ROM discs or USB storage devices
MP3	MP3 files recorded on CD-R/ -RW/ -ROM discs or USB storage devices

- Only the discs that have been finalized can be played.
- Discs recorded in packet write mode (UDF format) are not compatible with this unit.
- Corporation and product names mentioned herein are trademarks or registered trademarks of the respective corporations.
- Only discs recorded in ISO9660 Level 1, Level 2 and Joliet can be played.
- Files protected by DRM (Digital Rights Management) cannot be played.



Note

- This unit does not support multisession discs or multiborder recording.
- Multisession/multiborder recording is a method in which data is recorded on a single disc in two or more sessions/borders. A "session" or "border" is one recording unit, consisting of a complete set of data from lead-in to lead-out.

Regarding copy protected CDs

This unit is designed to conform to the specifications of the audio CD format. This unit does not support the playback or function of discs that do not conform to these specifications.

Supported audio file formats

- This unit does not support lossless encoding.

Cautions on use

When moving this unit

When moving this unit, be sure to first check that there is no disc loaded and disconnect the iPod/iPhone/iPad. Then press **STANDBY/ON**, wait for "**STANDBY**" disappears on main display to turn off, then unplug the power cord. Damage may occur if the unit is transported or moved with a disc inserted, or when another device is connected to the USB terminal, or **AUDIO IN** mini-plug jack.

Place of installation

- Choose a stable place near the TV or stereo system being used with this unit.
- Do not place this unit on top of a TV or color monitor. Also install it away from cassette decks and other devices easily affected by magnetic forces.

Avoid the following locations:

- Places exposed to direct sunlight
- Humid or poorly ventilated places
- Extremely hot places
- Places exposed to vibrations
- Places in which there is much dust or cigarette smoke
- Places exposed to soot, steam or heat (kitchens, etc.)

### **Do not place objects on this unit**

Do not place any objects on top of this unit.

### **Do not obstruct the ventilation holes.**

Do not use this unit on shaggy rugs, beds, sofas, etc., or wrapped in cloth, etc. Doing so will prevent the heat from dispersing, leading to damage.

### **Do not expose to heat.**

Do not place this unit on top of an amplifier or other component that generates heat. When rack mounting it, to avoid the heat given off by the amplifier or other audio component, place it on a shelf below the amplifier.

- Turn off the unit's power when not using it.
- Depending on signal conditions, striped patterns may appear on a TV screen and noise may enter the sound of radio broadcasts when the unit's power is on. If this happens, turn the unit's power off.

### **About condensation**

If this unit is moved suddenly from a cold place into a warm room (in winter, for example) or if the temperature in the room in which this unit is installed rises suddenly due to heater operation, etc., water droplets (condensation) may form inside (on operating parts and the lens). When condensation is present, this unit will not operate properly and playback is not possible. Let this unit stand at room temperature for 1 or 2 hours with the power turned on (the time depends on the extent of condensation). The water droplets will dissipate and playback will become possible. Condensation can also occur in the summer if this unit is directly exposed to the air flow from an air-conditioner. If this happens, move this unit to a different place.

### **Cleaning the product**

- Unplug the power cord from the power outlet when cleaning this unit.
- Clean this unit using a soft cloth. For tough dirt, apply some neutral detergent diluted in 5 to 6 parts water to a soft cloth, wring out thoroughly, wipe off the dirt, then wipe again with a soft, dry cloth.
- Alcohol, thinner, benzene, insecticides, etc., could cause the print or paint to peel off. Also, leaving rubber or vinyl products in contact with this unit for long periods of time could mar the cabinet.
- When using chemical-impregnated wipes, etc., read the cautions included with the wipes carefully.

### **Cleaning the lens**

- This unit's lens should not become dirty in normal use, but if for some reason it should malfunction due to dust or dirt, consult your nearest Pioneer authorized service center. Although lens cleaners for players are commercially available, we advise against using them since some may damage the lens.

## **Handling discs**

### **Storing**

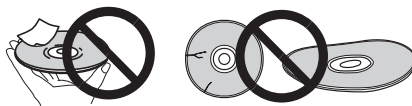
- Always place discs in their cases and store them vertically, avoiding hot, humid places, places exposed to direct sunlight and extremely cold places.
- Be sure to read the cautions included with the disc.

### **Cleaning discs**

- Discs may not play if there are fingerprints or dust on them. In this case, use a cleaning cloth, etc., to gently wipe the disc from the inside towards the outside. Do not use dirty cleaning cloths.



- Do not use benzene, thinner or other volatile chemicals. Also do not use record spray or antistatic agents.
- For tough dirt, apply some water to a soft cloth, wring out thoroughly, wipe off the dirt, then wipe off the moisture with a dry cloth.
- Do not use damaged (cracked or warped) discs.
- Do not let the signal surface of discs get scratched or dirty.
- Do not attach pieces of paper or stickers to discs. Doing so could warp discs, making it impossible to play them. Also note that rental discs often have labels attached to them, and the label's glue may have oozed out. Check that there is no glue around the edges of such labels before using rented discs.



### **About specially shaped discs**

Specially shaped discs (heart-shaped, hexagonal, etc.) cannot be played on this unit. Do not attempt to play such discs, as they could damage this unit.



## About iPod/iPhone/iPad



Bluetooth technology works with iPhone 5, iPhone 5s, iPhone 5c, iPhone 4s, iPhone 4, iPhone 3GS, iPhone 3G, iPhone, iPad (3rd and 4th generation), iPad 2, iPad, iPad mini, and iPod touch (2nd through 5th generation).

USB works with iPhone 5, iPhone 5s, iPhone 5c, iPhone 4s, iPhone 4, iPhone 3GS, iPhone 3G, iPhone, iPad (3rd and 4th generation), iPad 2, iPad, iPad mini, iPod touch (1st through 5th generation) and iPod nano (3rd through 7th generation).

"Made for iPod," "Made for iPhone," and "Made for iPad" mean that an electronic accessory has been designed to connect specifically to iPod, iPhone, or iPad, respectively, and has been certified by the developer to meet Apple performance standards. Apple is not responsible for the operation of this device or its compliance with safety and regulatory standards. Please note that the use of this accessory with iPod, iPhone, or iPad may affect wireless performance.

*iPad, iPhone, iPod, iPod nano and iPod touch are trademarks of Apple Inc., registered in the U.S. and other countries.*

## Auto power off setting

Long press the **■** on the unit for 3 seconds to switch auto power off setting **ON/OFF**.

The operation can be conducted using only the **■** on the unit. No need to set this using the remote control.

Initial setting is set to **ON**.

### Note

- When the auto power off is set to **ON**, "APD ON" will be displayed on the main display.
- When the auto power off is set to **OFF**, "APD OFF" will be displayed on the main display.

## Restoring all the settings to the defaults

Use the steps below to restore the all settings to their defaults.

- 1 Press **⏻** **STANDBY/ON** to turn the power on.
- 2 Press **CD** on the remote control or **INPUT** repeatedly on the main unit to select **CD** input.
- 3 Press **▲** **OPEN/CLOSE** to open the electric slide **CD** door.
- 4 Press **⏻** **STANDBY/ON** while pressing **■**.  
Use the buttons on this unit's top panel. "DEFAULT" is displayed while the settings are being restored. Power is turned off.

Specifications

• Amplifier section

RMS Power Output: 10 W + 10 W  
(1 kHz, 10 %, T.H.D., 8 Ω)

• Tuner section

Frequency Range (FM) 87.5 MHz to 108 MHz  
Antenna Input (FM) 75 Ω unbalanced

• Bluetooth (X-SMC01BT only)

Version Bluetooth Specification Ver. 2.1 + EDR  
Output Bluetooth Specification Class 2  
Estimated line-of-sight transmission distance\*

About 10 m  
Frequency range 2.4 GHz  
Modulation

FH-SS (Frequency Hopping Spread Spectrum)  
Supported Bluetooth profiles A2DP, AVRCP  
Supported Codec SBC (Subband Codec)  
Supported contents protection SCMS-T

\* The line-of-sight transmission distance is an estimate.

Actual transmission distances supported may differ  
depending on surrounding conditions.

• Miscellaneous

USB terminal 5 V, 2.1 A  
Power source AC 100 V to 240 V, 50 Hz/60 Hz  
Power consumption

Power on 25 W  
Power stand-by 0.5 W or less  
Power stand-by (BT STANDBY ON)\* 0.5 W or less  
\*X-SMC01BT only

Dimensions 430 mm (W) x 218 mm (H) x 114 mm (D)  
Weight (without package) 2.8 kg

• Speaker

Type  
Passive radiator  
Fullrange 6.6 cm cone  
Passive radiator 7.7 cm cone  
Playback frequency range 60 Hz to 20 kHz

• Accessories

Remote control 1  
AC adapter 1  
AAA batteries (R03) 2  
FM wire antenna 1  
iPad stand 1  
Warranty card  
Quick start guide  
Operating instructions (CD-ROM)

Note

- CD-ROM: Cannot be played on this unit.
- Specifications and the design are subject to possible modifications without notice, due to improvements.

## **Declaration of Conformity with regard to the R&TTE Directive 1999/5/EC**

Manufacturer:

**PIONEER CORPORATION**

1-1, Shin-ogura, Saiwai-ku,  
Kawasaki-shi, Kanagawa  
212-0031, Japan

EU Representative's:

**Pioneer Europe NV**

Haven 1087, Keetberglaan 1,  
9120 Melsele, Belgium  
<http://www.pioneer.eu>

[\*] X-SMC01BT-W, X-SMC01BT-K,  
X-SMC01BT-S



### **English:**

Hereby, Pioneer, declares that this [\*] is in compliance with the essential requirements and other relevant provisions of Directive 1999/5/EC.

### **Dansk:**

Undertegnede Pioneer erklærer herved, at følgende udstyr [\*] overholder de væsentlige krav og øvrige relevante krav i direktiv 1999/5/EF

### **Suomi:**

Pioneer vakuuttaa täten että [\*] tyypinen laite on direktiivin 1999/5/EY oleellisten vaatimusten ja sitä koskevien direktiivin muiden ehtojen mukainen.

### **Deutsch:**

Hiermit erklärt Pioneer, dass sich dieses [\*] in Übereinstimmung mit den grundlegenden Anforderungen und den anderen relevanten Vorschriften der Richtlinie 1999/5/EG befindet". (BMW i)

### **Nederlands:**

Hierbij verklaart Pioneer dat het toestel [\*] in overeenstemming is met de essentiële eisen en de andere relevante bepalingen van richtlijn 1999/5/EG

### **Ελληνικά:**

ΜΕ ΤΗΝ ΠΑΡΟΥΣΑ Pioneer ΔΗΛΩΝΕΙ ΟΤΙ [\*] ΣΥΜΜΟΡΦΩΝΕΤΑΙ ΠΡΟΣ ΤΙΣ ΟΥΣΙΩΔΕΙΣ ΑΠΑΙΤΗΣΕΙΣ ΚΑΙ ΤΙΣ ΛΟΙΠΕΣ ΣΧΕΤΙΚΕΣ ΔΙΑΤΑΞΕΙΣ ΤΗΣ ΟΔΗΓΙΑΣ 1999/5/ΕΚ

### **Français:**

Par la présente Pioneer déclare que l'appareil [\*] est conforme aux exigences essentielles et aux autres dispositions pertinentes de la directive 1999/5/CE

### **Italiano:**

Con la presente Pioneer dichiara che questo [\*] è conforme ai requisiti essenziali ed alle altre disposizioni pertinenti stabilite dalla direttiva 1999/5/CE.

### **Svenska:**

Härmed intygar Pioneer att denna [\*] står i överensstämmelse med de väsentliga egenskapskrav och övriga relevanta bestämmelser som framgår av direktiv 1999/5/EG.

### **Español:**

Por medio de la presente Pioneer declara que el [\*] cumple con los requisitos esenciales y cualesquiera otras disposiciones aplicables o exigibles de la Directiva 1999/5/CE

### **Português:**

Pioneer declara que este [\*] está conforme com os requisitos essenciais e outras disposições da Directiva 1999/5/CE.

### **Čeština:**

Pioneer tímto prohlašuje, že tento [\*] je ve shodě se základními požadavky a dalšími příslušnými ustanoveními směrnice 1999/5/ES

### **Eesti:**

Käesolevaga kinnitab Pioneer seadme [\*] vastavust direktiivi 1999/5/EÜ põhinõuetele ja nimetatud direktiivist tulenevatele teistele asjakohastele sätetele.

### **Magyar:**

Alulírott, Pioneer nyilatkozom, hogy a [\*] megfelel a vonatkozó alapvető követelményeknek és az 1999/5/EC irányelv egyéb előírásainak.

### **Latviešu valoda:**

Ar šo Pioneer deklarē, ka [\*] atbilst Direktīvas 1999/5/EK būtiskajām prasībām un citiem ar to saistītajiem noteikumiem.

### **Lietuvių kalba:**

Šiuo Pioneer deklaruoja, kad šis [\*] atitinka esminius reikalavimus ir kitas 1999/5/EB Direktyvos nuostatas.

### **Malti:**

Hawnhekk, Pioneer jiddikjara li dan [\*] jikkonforma mal-htiġijiet essenzjali u ma provvedimenti oħrajn relevanti li hemm fid-Dirrettiva 1999/5/EC

### **Slovenčina:**

Pioneer týmto vyhlasuje, že [\*] spĺňa základné požiadavky a všetky príslušné ustanovenia Smernice 1999/5/ES.

### **Slovenščina:**

Pioneer izjavlja, da je ta [\*] v skladu z bistvenimi zahtevami in ostalimi relevantnimi določili direktive 1999/5/ES.

### **Română:**

Prin prezenta, Pioneer declara ca acest [\*] este în conformitate cu cerințele esențiale si alte prevederi ale Directivei 1999/5/EU.

### **български:**

С настоящето, Pioneer декларира, че този [\*] отговаря на основните изисквания и други съответни постановления на Директива 1999/5/EC.

### **Polski:**

Niniejszym Pioneer oświadcza, że [\*] jest zgodny z zasadniczymi wymogami oraz pozostałymi stosownymi postanowieniami Dyrektywy 1999/5/EC

### **Norsk:**

Pioneer erklærer herved at utstyret [\*] er i samsvar med de grunnleggende krav og øvrige relevante krav i direktiv 1999/5/EF.

### **Íslenska:**

Hér með lýsir Pioneer yfir því að [\*] er í samræmi við grunnkröfur og aðrar kröfur, sem gerðar eru í tilskipun 1999/5/EC

### **Hrvatski:**

Ovime tvrtka Pioneer izjavlja da je ovaj [\*] u skladu osnovnim zahtjevima i ostalim odredbama Direktive 1999/5/EC.

**<http://www.pioneer.co.uk>**  
**<http://www.pioneer.eu>**

© 2013 PIONEER CORPORATION.  
All rights reserved.

---

**PIONEER CORPORATION**

1-1, Shin-ogura, Saiwai-ku, Kawasaki-shi, Kanagawa 212-0031, Japan

**PIONEER ELECTRONICS (USA) INC.**

P.O. BOX 1540, Long Beach, California 90801-1540, U.S.A. TEL: (800) 421-1404

**PIONEER ELECTRONICS OF CANADA, INC.**

340 Ferrier Street, Unit 2, Markham, Ontario L3R 2Z5, Canada TEL: 1-877-283-5901, 905-479-4411

**PIONEER EUROPE NV**

Haven 1087, Keetberglaan 1, B-9120 Melsele, Belgium TEL: 03/570.05.11

**PIONEER ELECTRONICS ASIACENTRE PTE. LTD.**

253 Alexandra Road, #04-01, Singapore 159936 TEL: 65-6472-7555

**PIONEER ELECTRONICS AUSTRALIA PTY. LTD.**

5 Arco Lane, Heatherton, Victoria, 3202, Australia, TEL: (03) 9586-6300

**PIONEER ELECTRONICS DE MEXICO S.A. DE C.V.**

Bldv.Manuel Avila Camacho 138 10 piso Col.Lomas de Chapultepec, Mexico, D.F. 11000 TEL: 55-9178-4270

K002\_B3\_En

<ARB7539-A>