

## IMPORTANT SAFEGUARDS

When using electrical appliances, basic safety precautions should always be followed to reduce the risk of fire, electric shock, and/or injury to persons, including the following:

- 1 Read all instructions and information in this instruction book and any other literature included in this carton referring to this product before operating or using this appliance.
- 2 Do not touch hot surfaces. Use handles or knobs.
- 3 To protect against fire, electric shock and personal injury do not immerse cord, plugs or appliance in water or other liquid.
- 4 Close supervision is necessary when any appliance is used by or near children.
- 5 Unplug from outlet when not in use and before cleaning. Allow to cool before putting on or taking off parts, and before cleaning the appliance.
- 6 Do not operate any appliance with a damaged cord or plug or after the appliance malfunctions or has been damaged in any way. Return appliance to the nearest authorized service centre for examination, repair or adjustment.
- 7 The use of accessory attachments not recommended by the appliance manufacturer may result in fire, electric shock or personal injury.
- 8 Do not use outdoors.
- 9 Do not let cord hang over edge of table or counter, or touch hot surfaces.
- 10 Do not place on or near a hot gas or electric burner, or in a heated oven.
- 11 Always turn appliance **"OFF"**, then plug cord into the wall outlet. To disconnect, turn switch to **"OFF"**, then remove plug from wall outlet.
- 12 Do not use appliance for other than intended household use.
- 13 Use extreme caution when using hot steam.

## SAVE THESE INSTRUCTIONS

## CAUTION

This appliance is for household use. Any servicing, other than cleaning and user maintenance, should be performed by an authorized service centre. Do not immerse base in water. To reduce the risk of fire or electric shock, do not disassemble the base. There are no user serviceable parts inside. Repair should be done by authorized service personnel only.

- 1 Check voltage to be sure that the voltage indicated on the nameplate agrees with your voltage.
- 2 Never use warm or hot water to fill the water tank. Use cold water only.
- 3 Keep your hands and the cord away from hot parts of the appliance during operation.
- 4 Never clean with scouring powders or hard implements. Simply use a soft cloth dampened with water.
- 5 To avoid your coffee maker scaling up, use purified or bottled water.

## INSTRUCTIONS FOR THE POWER SUPPLY CORD

- A A short power-supply cord is provided to reduce risks of getting tangled up or tripping over a longer cord.
- B Longer extension cords are available and may be used if care is exercised in their use.
- C If a long extension cord is used:
  - 1 the marked electrical rating of the extension cord should be at least as great as the electrical rating of the appliance.
  - 2 if the appliance is of the grounded type, the extension cord should be a grounding type
  - 3 the cable does not hang from the table to avoid the risk of getting caught up in it.

## GENERAL INFORMATION

The coffee machine is suitable to make espresso coffee using coffee beans and is equipped with a device for the distribution of steam and hot water.

This elegantly styled machine is designed for household use only. It is not suitable for continuous professional-type use.

**Warning. The manufacturer shall accept no liability for damage or injury caused by:**

- **improper use or use for other than the intended purposes;**
- **repairs carried out by anyone other than an authorised service centre;**
- **tampering with the power cord;**
- **tampering with any machine component;**
- **use of spare parts and accessories other than those supplied by the manufacturer.**

**The warranty will be invalidated in such cases.**

### ***TO FACILITATE INTERPRETATION***



A warning triangle draws attention to the instructions that are important for user safety. Please carefully abide by these instructions to avoid serious injury!

### ***HOW TO USE THESE OPERATING INSTRUCTIONS***

Keep these operating instructions in a safe place and make them available to anyone else who should use the coffee machine. For further information or an explanation of problems not completely or sufficiently addressed in these instructions, contact an authorised service centre.

## TECHNICAL SPECIFICATIONS

• Voltage rating	See rating plate on appliance
• Power rating	See rating plate on appliance
• Casing material	Metal
• Size (w x h x d) (mm)	285 x 375 x 400
• Weight (Kg)	9
• Cord length (mm)	1200
• Control panel	Front (Digital)
• Water tank (lit.)	2 - Extractible
• Power supply	See rating plate on appliance
• Pump pressure (bars)	15
• Boiler	Stainless steel
• Coffee container capacity (g.)	300 of coffee beans
• Grinders	Ceramic
• Quantity of ground coffee	8 g
• Dreg drawer capacity	13
• Safety devices	Boiler pressure safety valve safety thermostat

Subject to engineering and manufacturing changes as warranted by technological developments.

Machine in conformity with European Directive 89/336/EEC (Italian Legislative Decree 476 of 04/12/92) concerning electromagnetic compatibility.

**IN THE EVENT OF AN EMERGENCY**

Immediately unplug the appliance.

**THE APPLIANCE MAY ONLY BE USED**

- In a closed place.
- To prepare coffee, dispense hot water, froth milk or heat beverages using steam.
- For household use.
- By adults in full possession of their physical and mental capacities.

**NEVER USE THE APPLIANCE**

for purposes other than those indicated above to avoid hazards.

Never place any substances in the containers other than those specified in the instruction manual. When you fill a container, make sure all nearby containers are closed.

Fill the water tank only with fresh drinking water: hot water and/or other liquids may damage the machine. Do not use carbonated water. The coffee grinder may be adjusted only while it is running. Do not introduce your fingers or any material other than coffee beans into the coffee grinder. Before attempting to access the inside of the coffee grinder, switch OFF the machine and remove the plug from the electric socket.

**MAINS CONNECTION**

Connect the coffee machine to a suitable electric socket. The voltage must match the voltage specified on the appliance rating plate.

**INSTALLATION**

- Choose a perfectly level supporting surface. Do not place on a hot surface!
- Maintain a distance of 10 cm from walls and electric or gas burners.
- Do not keep at temperatures below 0 °C; the appliance may be damaged by freezing.
- The electric socket must be accessible at all times.
- The power cord must not be damaged, secured with clamps, placed on very hot surfaces etc.
- Do not let the power cord hang loosely (Warning: danger of tripping or of causing the appliance to fall).
- Do not use the power cord to carry or pull the coffee machine.

**HAZARDS**

- The appliance must not be used by children or by individuals unacquainted with the operating instructions.
- The appliance is dangerous for children. If left unattended it must be switched off.
- Do not leave the materials used to pack the appliance within children's reach.
- Do not direct a jet of hot steam and/or hot water toward yourself or others: danger of scalding.
- Do not introduce any objects through the openings in the appliance (Electrical hazard!).
- Do not touch the plug when your hands or feet are wet. Do not unplug the appliance by yanking at the power cord.
- Warning: contact with hot water, steam or and hot water/steam nozzle may cause burns.

**FAULTS**

- Do not use the appliance if it malfunctions or you suspect damage, e.g. after a fall.
- Repairs must be performed by an authorised service centre.
- Do not use an appliance with a defective power cord. The cord may be replaced exclusively by a service centre (Electrical hazard!).
- Switch off the appliance before opening the service door. Danger of burns!

**CLEANING / DESCALING**

- Before cleaning the appliance, unplug it and allow it to cool down.
- Avoid exposing the appliance to splashes of water. Do not immerge it in water.
- Do not dry machine components in a conventional or microwave oven.

**SPARE PARTS**

To guarantee safety, you should use only original spare parts and accessories.

**DISPOSAL**

- The packing materials can be recycled.
- Appliance: unplug the appliance and cut the power cord.
- Deliver the appliance and power cord to a service centre or public waste disposal facility.



**!** The messages displayed by the machine during operation are shown on pg.28.

**!** Important warning for using the "Aqua Prima Filter" can be found at page 28.



Check that all components are correctly placed.



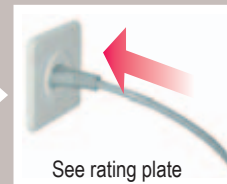
Fill the coffee bean container with coffee beans.



The "Aqua Prima" filter can be installed (see pg.27).



Fill the tank with fresh drinking water.



See rating plate  
Insert the plug into a suitable electric socket.



Move the ON/OFF switch to "I" to turn on the machine.



The machine is warming up; lights are flashing.



Place a container beneath the steam tube.



Turn the knob counter-clockwise to start loading the circuit.



Wait until a steady stream of water flows out from the nozzle.



Turn the knob clockwise to terminate the circuit-loading process.



Remove the container.



When lights remain steadily lit, the machine is ready for use.

**Note:** You must load the circuit before starting up the machine for the first time, if it has been inoperative for a lengthy period or if the water tank has been completely emptied. The circuit must be also loaded each time the light is steadily lit:



Check the date on "Aqua Prima" filter; if filter is past its date, replace it with a new one.



**Adjustment may be made only while the coffee grinder is operating.**

The fineness of the grind may be adjusted using the knob.

Coffee flows out too slowly. Press and turn.

Coffee flows out too fast. Press and turn.

Use coffee bean blends for espresso coffee makers. If you do not obtain the desired result, try using different coffee blends. Store coffee in a cool place, in a hermetically sealed container. You will note a change after dispensing 1 - 2 coffees.

If you set the grinder on too fine a grind (knob turned all the way anticlockwise) and the SBS control on "strong" (toward the right), coffee may flow out in a slow trickle or not at all.

**COFFEE IN CUPS** - You must adjust the dose before dispensing coffee. This adjustment will have an immediate effect on the coffee brewed.



To adapt the quantity of coffee brewed to the dimensions of cups.

Short coffee

Weak black coffee

**BIG CUPS**

To place the brew unit again in its position, pull it until it fits in.



To use big cups, press the button and push the brew unit until the end.

**For machines provided with SBS only.** - To adjust the strength and consistency of brewed coffee. The adjustment can also be made while brewing the coffee. This adjustment will have an immediate effect on the coffee brewed.



Café crème

Espresso coffee

Strong black coffee

**Warning! Hot water and steam may cause burns! Direct the steam tube toward the drip tray.**



COFFEE BEANS  
1 COFFEE

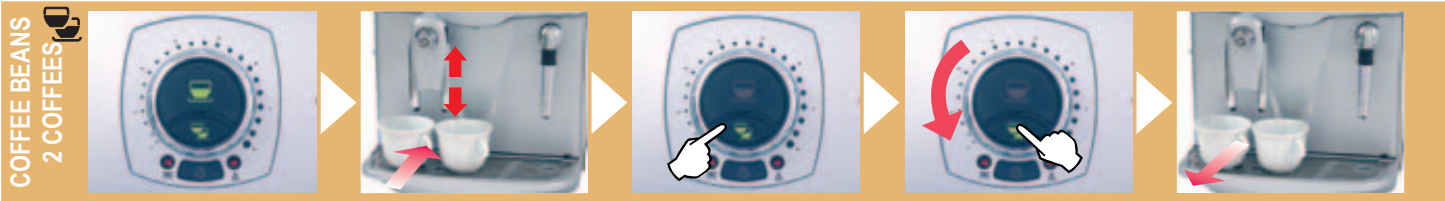
Make sure that the machine is ready.

Position a warm coffee cup beneath the brew unit.

Press the button to brew 1 coffee.

To stop brewing sooner, press the button or turn the knob.

When the machine stops making the coffee, remove the cup.



COFFEE BEANS  
2 COFFEES

Make sure that the machine is ready.

Position the warm coffee cups beneath the brew unit.

Press the button to brew 2 coffees.

To stop brewing sooner, press the button or turn the knob.

When the machine stops making the coffee, remove the cups.



HOT WATER

Place a container beneath the steam tube.

Turn the knob counter-clockwise to start dispensing water.

Wait.

When you reach the desired amount, close the knob.

Remove the container.





**Warning! Hot water and steam may cause burns! Direct the steam tube toward the drip tray.**

CAPPUCCINO



Fill a cup to 1/3 with cold milk.



Press the button to select the function.  
The light is flashing.



When the light is steadily lit, the machine is ready to release steam.



Open the knob to discharge any residual water.



When only steam comes out, close the knob.



Position the cup containing milk beneath the steam tube.



Open the knob to release steam.



Move the cup in a circular fashion to heat the milk evenly.



After frothing the milk, close the knob.



Remove the cup.



Press the button to restore the machine to normal operation.  
Lights are flashing.



Place a container beneath the steam tube.



Open the knob and dispense hot water.



When lights remain steadily lit, close the knob and remove the lid.



Dispense coffee into the cup to prepare a delicious cappuccino.

ENGLISH



**Warning! Hot water and steam may cause burns! Direct the steam tube toward the drip tray.**



Check the machine status. Press the button to select the function. The light is flashing. When the light is steadily lit, the machine is ready to release steam. Open the knob to discharge any residual water. When only steam comes out, close the knob.



Take and place the container beneath the hot water/steam tube. Open the knob to release steam. Move the container in a circular fashion to heat evenly. After you have finished, close the knob. Remove the container.



Press the button to restore the machine to normal operation. Lights are flashing. Place a container beneath the steam tube. Open the knob and dispense hot water. When lights remain steadily lit, close the knob and remove the lid. The machine is ready to brew coffee or dispense hot water.

**Warning! Never use vinegar as a descaling agent.** You can use any commercially available non-toxic, non-harmful descaling product for coffee machines. We recommend using a Saeco descaling agent.

Descaling is necessary every 2 months; should water be very hard, descale the machine more frequently. The machine must be on; it automatically controls the distribution of the descaling solution.



The machine must be descaled every 2 months. **Remove the filter, see page 27.**

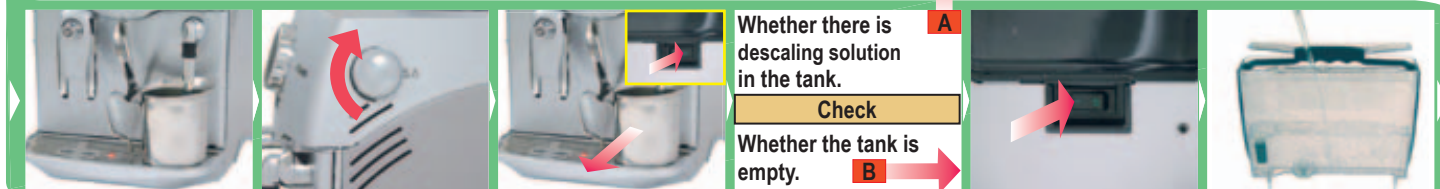
Switch off the machine.

Fill the water tank with the descaling solution.

Place a large receptacle beneath the steam tube.

Switch on the machine.

Open the knob. The descaling process starts.



Dispense the descaling solution into the receptacle.

After about 30 seconds close the knob.

Switch off the machine and remove the receptacle.

Whether there is descaling solution in the tank.  
**Check**  
Whether the tank is empty.

Switch on the machine.

Rinse out the tank and fill it with fresh drinking water.



Place a large receptacle beneath the steam tube.

Open the knob to rinse.

If the receptacle fills, empty it.

When no water is left, turn the knob to close the valve. Remove the container.

**Warning!** If the descaling cycle is interrupted, the water tank and internal machine circuits must be rinsed. Type "B" routing.

After descaling the machine, reload the machine circuit. Install the cartridge filter again in the water tank.

Do not dry the machine and/or its components in a microwave and/or conventional oven.

Do not immerge the machine in water and do not place any of its components in a dishwasher.



**BASIC CLEANING**

Turn the machine off. Unplug the machine.

Wash the water tank. Wash the filter inside it.

Remove the drip tray, empty it out and wash it.

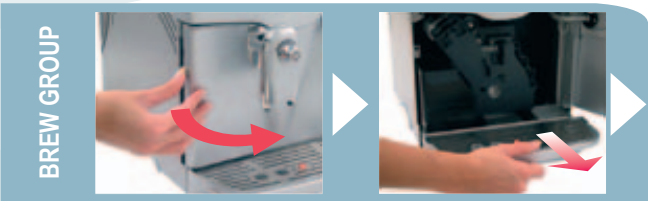
Remove the dregs drawer, empty it out and wash it.

Remove the “pannarello” and clean it.



Remove the brew unit and wash it with water.

Clean the machine, its components, and the brew group once a week at least.



**BREW GROUP**

Open the front door.

Remove the drip tray and the dregs drawer.



Press the PUSH button to release the brew group.

Unscrew the upper filter and wash it.

Fit the filter back in place when clean.

Wash the unit, dry it and fit it back in place. **Do not press the “PUSH” button.**

Set all machine components back in position. Close the door.



The filter must be replaced when signalled by the machine, see page 28.



Before descaling, remove the filter from the tank.

INSTALLATION



Remove the filter from the packing container.



Adjust the date to the current month.



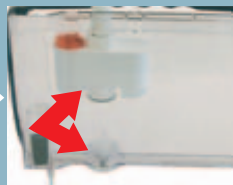
Insert the applicator and turn it clockwise to secure it to the filter.



Check where the filter positioning and reference mark is.



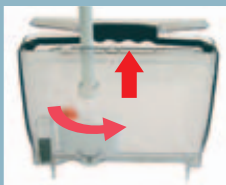
Put the filter into the empty tank.



The reference must be positioned in correspondence with the groove.



Press until the end limit.



Turn the applicator counter-clockwise and remove it from the tank.



Fill the tank with fresh drinkable water.



Position a container beneath the steam tube and turn the machine on.



Open the knob and dispense water.



Empty the water tank out at intervals.



When the tank is empty, fill it again with fresh drinkable water.



Press the button. When the light flashes, release the button.

It is possible to use the machine without filter, Saeco suggests its use. If filter is not used, the machine must be descaled more frequently.

You can now use your coffee machine.

The control panel display guides users and helps them to use the machine correctly.



Steadily lit

Fill the coffee bean container with coffee beans and start the coffee brewing cycle.  
Fill the water tank with fresh drinking water and load the circuits.  
Load the circuit.  
Empty the dregs drawer.

**Important note: the dregs drawer may be emptied only when the machine is on. The drawer must be removed for at least 5 seconds. If you empty the drawer with the machine off, you will not be able to dispense coffee the next time you switch the machine on.**



Flashing

Fit the brew unit properly in place.  
Fit the drip tray and dregs drawer properly in place.  
Close the front door.



Steadily lit

Replace the water filter in the tank.  
After replacing the filter in the tank, reset the alarm by pressing the button for 5 seconds until the light goes off.



Flashing

Too high boiler temperature, load the circuit.  
Let water flow out.

**ADDITIONAL INFORMATION FOR CORRECTLY USING THE “AQUA PRIMA” FILTER.**

- Please follow these simple instructions to correctly use the “Aqua prima” filter:
1. Keep the “Aqua prima” filter cool and away from sunlight; the room temperature should be between +5°C and +40°C;
  2. Do not use the filter in temperatures over 60°C.
  3. If the coffee machine is not used for 3 days, we recommend washing the “Aqua prima” filter;
  4. If the coffee machine is not used for more than 20 days, it is advisable to replace the filter.
  5. To store an already opened filter, seal it in a nylon bag and keep in the fridge; do not store it in the freezer to avoid damaging the filter properties.
  6. Before using the filter, leave it to soak in the water tank for 30 minutes.
  7. Once it is taken out of its pack, do not keep the filter in the open air.
  8. The filter must be replaced 90 days after opening the packing or after treating 60 litres of drinking water.

---

---

---

---

---



---





---

---

---

---

PROBLEMS	CAUSES	REMEDIES
The machine does not turn on.	The machine is not connected to the power supply.	Move the main switch to ON. Check the plug and the connection
The coffee is not hot enough.	The cups are cold.	Warm up the cups.
The machine does not brew coffee.	Knob positioned on too low a setting	Turn the knob clockwise to a higher setting.
No hot water or steam is dispensed.	The tube nozzle is clogged.	Clean the nozzle opening with a needle. 
A noise can be heard coming from the steam tube of the machine.		 <b>During this operation, the knob must be closed and the machine must be off.</b>
The machine takes a long time to warm up.	Excessive scale has built up.	Descale the machine.
The brew unit cannot be removed.	The unit has stopped in the wrong position.	Close the door and switch on the machine; the brew unit will move back into position.

PROBLEMS	CAUSES	REMEDIES
Coffee flows out in slow trickle or not at all.	Excessively fine grind  and SBS control turned to the right. 	Adjust to a coarser grind (turn the knob clockwise).  Turn the SBS control toward the left. 



## WICHTIGE VORSICHTSMASSNAHMEN

Bei der Verwendung von Elektrogeräten empfiehlt es sich, sich an einige Vorsichtsmaßnahmen zu halten, um die Gefahr von Brand, elektrischen Schlägen und Unfällen einzuschränken.

- 1 Alle in diesem oder jedem anderen in der Verpackung enthaltenen Heft angegebenen Anweisungen und Informationen aufmerksam durchlesen, ehe die Espressomaschine eingeschaltet oder benutzt wird.
- 2 Keine heißen Flächen berühren.
- 3 Netzkabel, Stecker oder den Maschinenkörper nicht in Wasser oder andere Flüssigkeit tauchen, um Brand, elektrische Schläge und Unfälle zu vermeiden.
- 4 Im Beisein von Kindern die Espressomaschine mit besonderer Vorsicht handhaben.
- 5 Den Stecker aus der Steckdose ziehen, sobald die Maschine nicht mehr benutzt wird oder gereinigt wird. Bevor Teile entnommen oder eingesetzt werden sowie vor der Reinigung die Maschine abkühlen lassen.
- 6 Keine kaputten oder defekten Geräte oder Geräte mit beschädigtem Netzkabel oder –stecker verwenden. Das schadhafte Gerät beim nächsten Händler oder Kundendienst prüfen, reparieren oder neu einstellen lassen.
- 7 Die Verwendung nicht vom Hersteller empfohlenen Zubehörs kann Brand, elektrische Schläge und Unfälle verursachen.
- 8 Die Espressomaschine nicht im Freien verwenden.
- 9 Das Kabel darf nicht vom Tisch herunterhängen oder heiße Flächen berühren.
- 10 Die Espressomaschine nicht in der Nähe von heißen Küchenherden oder Backöfen verwenden.
- 11 Prüfen, ob die Maschine sich in Stellung „0“ befindet, bevor man den Stecker einsteckt. Zum Ausschalten auf „0“ stellen, dann den Stecker aus der Steckdose ziehen.
- 12 Die Maschine nur im Haushalt verwenden.
- 13 Bei Verwendung von heißem Dampf mit äußerster Vorsicht verfahren.

## DIESE ANWEISUNGEN GUT AUFBEWAHREN

## HINWEISE

Diese Espressomaschine wurde ausschließlich für den Haushalt entwickelt. Sämtliche Eingriffe mit Ausnahme der Reinigung oder normalen Wartung dürfen ausschließlich durch den autorisierten Kundendienst vorgenommen werden. Das Gerät nicht in Wasser tauchen. Reparaturen dürfen nur durch Fachpersonal des autorisierten Kundendienstes erfolgen.

- 1 Sicherstellen, dass die auf dem Datenschild des Geräts angegebene Spannung mit der Ihres Netzanschlusses übereinstimmt.
- 2 Nie lauwarmes oder heißes Wasser in den Wasserbehälter füllen. Ausschließlich kaltes Wasser verwenden.
- 3 Während des Betriebs nie die heißen Teile oder das Netzkabel der Maschine berühren.
- 4 Keine Schleif- oder Scheuermittel zum Reinigen verwenden. Es genügt ein weicher Lappen mit Wasser.
- 5 Zur Vermeidung von Kalkablagerungen kohlensäurefreies Mineralwasser verwenden.

## BETRIEBSANLEITUNGEN ZUM NETZKABEL

- A Das mitgelieferte Netzkabel ist relativ kurz, damit es sich nicht verdrehen kann oder Sie darüber stolpern.
- B Längere Netzkabel können verwendet werden, doch sollte man dabei mit grösster Vorsicht vorgehen.
- C Sollte ein längeres Netzkabel verwendet werden, folgendes überprüfen:
  - 1 dass die auf der Verlängerungsschnur vermerkte Spannung mindestens der des Elektrogerätes entspricht;
  - 2 dass es einen Stecker mit drei Stiften (Erdung) hat, falls das Netzkabel des Elektrogerätes ebenfalls drei hat;
  - 3 Das Netzkabel darf nicht am Tisch herunterhängen; Sie könnten darüber stolpern.