

ES-1016B/1024B

Ethernet Switch

User's Guide

Version 1.00
9/2005

The logo for ZyXEL, featuring the word "ZyXEL" in a bold, blue, sans-serif font. The "Zy" is in a slightly larger font size than "XEL".

Copyright

Copyright © 2005 by ZyXEL Communications Corporation.

The contents of this publication may not be reproduced in any part or as a whole, transcribed, stored in a retrieval system, translated into any language, or transmitted in any form or by any means, electronic, mechanical, magnetic, optical, chemical, photocopying, manual, or otherwise, without the prior written permission of ZyXEL Communications Corporation.

Published by ZyXEL Communications Corporation. All rights reserved.

Disclaimer

ZyXEL does not assume any liability arising out of the application or use of any products, or software described herein. Neither does it convey any license under its patent rights nor the patent rights of others. ZyXEL further reserves the right to make changes in any products described herein without notice. This publication is subject to change without notice.

Interference Statements and Warnings

FCC Statement

This switch complies with Part 15 of the FCC rules. Operation is subject to the following two conditions:

- 1 This switch may not cause harmful interference.
- 2 This switch must accept any interference received, including interference that may cause undesired operations.

FCC Warning

This equipment has been tested and found to comply with the limits for a Class B digital switch, pursuant to Part 15 of the FCC Rules. These limits are designed to provide reasonable protection against harmful interference in a commercial environment. This equipment generates, uses, and can radiate radio frequency energy and, if not installed and used in accordance with the instruction manual, may cause harmful interference to radio communications. Operation of this equipment in a residential area is likely to cause harmful interference in which case the user will be required to correct the interference at his own expense.

CE Mark Warning:

This is a class B product. In a domestic environment this product may cause radio interference in which case the user may be required to take adequate measures.

Notice 1

Changes or modifications not expressly approved by the party responsible for compliance could void the user's authority to operate the equipment.

Certifications

- 1 Go to www.zyxel.com
- 2 Select your product from the drop-down list box on the ZyXEL home page to go to that product's page.
- 3 Select the certification you wish to view from this page.

Registration

Register your product online for free future product updates and information at www.zyxel.com for global products, or at www.us.zyxel.com for North American products.

Safety Warnings

For your safety, be sure to read and follow all warning notices and instructions.

- Do NOT open the device or unit. Opening or removing covers can expose you to dangerous high voltage points or other risks. ONLY qualified service personnel can service the device. Please contact your vendor for further information.
- Use ONLY the dedicated power supply for your device. Connect the power cord or power adaptor to the right supply voltage (110V AC in North America or 230V AC in Europe).
- Do NOT use the device if the power supply is damaged as it might cause electrocution.
- If the power supply is damaged, remove it from the power outlet.
- Do NOT attempt to repair the power supply. Contact your local vendor to order a new power supply.
- Place connecting cables carefully so that no one will step on them or stumble over them. Do NOT allow anything to rest on the power cord and do NOT locate the product where anyone can walk on the power cord.
- If you wall mount your device, make sure that no electrical, gas or water pipes will be damaged.
- Do NOT install nor use your device during a thunderstorm. There may be a remote risk of electric shock from lightning.
- Do NOT expose your device to dampness, dust or corrosive liquids.
- Do NOT use this product near water, for example, in a wet basement or near a swimming pool.
- Make sure to connect the cables to the correct ports.
- Do NOT obstruct the device ventilation slots, as insufficient airflow may harm your device.
- Do NOT store things on the device.
- Connect ONLY suitable accessories to the device.

ZyXEL Limited Warranty

ZyXEL warrants to the original end user (purchaser) that this product is free from any defects in materials or workmanship for a period of up to two years from the date of purchase. During the warranty period, and upon proof of purchase, should the product have indications of failure due to faulty workmanship and/or materials, ZyXEL will, at its discretion, repair or replace the defective products or components without charge for either parts or labor, and to whatever extent it shall deem necessary to restore the product or components to proper operating condition. Any replacement will consist of a new or re-manufactured functionally equivalent product of equal value, and will be solely at the discretion of ZyXEL. This warranty shall not apply if the product is modified, misused, tampered with, damaged by an act of God, or subjected to abnormal working conditions.

Note

Repair or replacement, as provided under this warranty, is the exclusive remedy of the purchaser. This warranty is in lieu of all other warranties, express or implied, including any implied warranty of merchantability or fitness for a particular use or purpose. ZyXEL shall in no event be held liable for indirect or consequential damages of any kind of character to the purchaser.

To obtain the services of this warranty, contact ZyXEL's Service Center for your Return Material Authorization number (RMA). Products must be returned Postage Prepaid. It is recommended that the unit be insured when shipped. Any returned products without proof of purchase or those with an out-dated warranty will be repaired or replaced (at the discretion of ZyXEL) and the customer will be billed for parts and labor. All repaired or replaced products will be shipped by ZyXEL to the corresponding return address, Postage Paid. This warranty gives you specific legal rights, and you may also have other rights that vary from country to country.

Customer Support

Please have the following information ready when you contact customer support.

- Product model and serial number.
- Warranty Information.
- Date that you received your device.
- Brief description of the problem and the steps you took to solve it.

METHOD	SUPPORT E-MAIL	TELEPHONE*	WEB SITE	REGULAR MAIL
LOCATION	SALES E-MAIL	FAX	FTP SITE	
CORPORATE HEADQUARTERS (WORLDWIDE)	support@zyxel.com.tw	+886-3-578-3942	www.zyxel.com www.europe.zyxel.com	ZyXEL Communications Corp. 6 Innovation Road II Science Park Hsinchu 300 Taiwan
	sales@zyxel.com.tw	+886-3-578-2439	ftp.zyxel.com ftp.europe.zyxel.com	
CZECH REPUBLIC	info@cz.zyxel.com	+420 241 091 350	www.zyxel.cz	ZyXEL Communications Czech s.r.o. Modranská 621 143 01 Praha 4 - Modrany Ceská Republika
	info@cz.zyxel.com	+420 241 091 359		
DENMARK	support@zyxel.dk	+45 39 55 07 00	www.zyxel.dk	ZyXEL Communications A/S Columbusvej 5 2860 Soeborg Denmark
	sales@zyxel.dk	+45 39 55 07 07		
FINLAND	support@zyxel.fi	+358-9-4780-8411	www.zyxel.fi	ZyXEL Communications Oy Malminkaari 10 00700 Helsinki Finland
	sales@zyxel.fi	+358-9-4780 8448		
FRANCE	info@zyxel.fr	+33 (0)4 72 52 97 97	www.zyxel.fr	ZyXEL France 1 rue des Vergers Bat. 1 / C 69760 Limonest France
		+33 (0)4 72 52 19 20		
GERMANY	support@zyxel.de	+49-2405-6909-0	www.zyxel.de	ZyXEL Deutschland GmbH. Adenauerstr. 20/A2 D-52146 Wuerselen Germany
	sales@zyxel.de	+49-2405-6909-99		
NORTH AMERICA	support@zyxel.com	+1-800-255-4101 +1-714-632-0882	www.us.zyxel.com	ZyXEL Communications Inc. 1130 N. Miller St. Anaheim CA 92806-2001 U.S.A.
	sales@zyxel.com	+1-714-632-0858	ftp.us.zyxel.com	
NORWAY	support@zyxel.no	+47 22 80 61 80	www.zyxel.no	ZyXEL Communications A/S Nils Hansens vei 13 0667 Oslo Norway
	sales@zyxel.no	+47 22 80 61 81		
SPAIN	support@zyxel.es	+34 902 195 420	www.zyxel.es	ZyXEL Communications Alejandro Villegas 33 1º, 28043 Madrid Spain
	sales@zyxel.es	+34 913 005 345		
SWEDEN	support@zyxel.se	+46 31 744 7700	www.zyxel.se	ZyXEL Communications A/S Sjöporten 4, 41764 Göteborg Sweden
	sales@zyxel.se	+46 31 744 7701		

METHOD	SUPPORT E-MAIL	TELEPHONE*	WEB SITE	REGULAR MAIL
LOCATION	SALES E-MAIL	FAX	FTP SITE	
UNITED KINGDOM	support@zyxel.co.uk	+44 (0) 1344 303044 08707 555779 (UK only)	www.zyxel.co.uk	ZyXEL Communications UK Ltd., 11 The Courtyard, Eastern Road, Bracknell, Berkshire, RG12 2XB, United Kingdom (UK)
	sales@zyxel.co.uk	+44 (0) 1344 303034	ftp.zyxel.co.uk	

* "+" is the (prefix) number you enter to make an international telephone call.

Table of Contents

Copyright	1
Interference Statements and Warnings	2
ZyXEL Limited Warranty	4
Customer Support.....	5
Table of Contents	1
List of Figures	3
List of Tables	5
Preface	7
Chapter 1	
Getting to Know Your Switch	9
1.1 Introduction	9
1.2 Features	9
1.3 Package Contents	10
1.4 Applications	10
1.4.1 Standalone Workgroup	10
1.4.2 Bridging	10
Chapter 2	
Hardware Description and Connection	13
2.1 Rear Panel	13
2.1.1 Rear Panel Power Connection	13
2.2 Front Panel	13
2.2.1 RJ-45 Auto-negotiating Ports	13
2.2.2 Front Panel Connections	14
2.2.3 Front Panel LEDs	14
2.3 Hardware Installation	14
Chapter 3	
Troubleshooting	15
3.1 Introduction	15
3.1.1 PWR LED	15
3.1.2 LINK/ACT LED	15
3.2 Improper Network Cabling and Topology	16

Appendix A
Product Specifications 17
Index 19

List of Figures

Figure 1 ES-1016B 9

Figure 2 ES-1024B 9

Figure 3 Standalone Workgroup Example 10

Figure 4 Bridging Example 11

Figure 5 Rear Panel 13

Figure 6 Front Panel LEDs (ES-1024A) 14

Figure 7 Troubleshooting LINK/ACT LED 15

Figure 8 Troubleshooting Improper Network Cabling and Topology 16

List of Tables

Table 1 Network Cable Types	14
Table 2 The Front Panel LED Descriptions	14
Table 3 Troubleshooting Power LED	15
Table 4 Product Specifications	17

Preface

Congratulations on your purchase of the Dimension Ethernet Switch.

About the Dimension Ethernet Switches

The Dimension switch is a cost effective Fast Ethernet switch ideal for setting up a small workgroup or for bridging two separate networks.

There are two switch models. The ES-1016B comes with 16 10/100M ports and the ES-1024B with 24 10/100M ports.

Related Documentation

- Support Disk

Refer to the included CD for support documents.

- Quick Start Guide

The Quick Start Guide is designed to help you get up and running right away. It contains a detailed easy-to-follow connection diagram and instructions on how to install and connect the hardware in your network.







- ZyXEL Web Site

The ZyXEL download library at www.zyxel.com contains additional support documentation and an online glossary of networking terms.

Syntax Conventions

- For brevity's sake, we will use "e.g.," as a shorthand for "for instance", and "i.e.," for "that is" or "in other words" throughout this manual.
- The ES-1016B/1024B Ethernet Switch may be referred to as the switch in this user's guide. This refers to both models (ES-1016B and ES-1024B) unless specifically identified.
- Unless specified, images of the ES-1024B are used throughout this document. The ES-1016B has 16 available Ethernet ports however the images used in this User's Guide show the 24 available ports that are featured on the ES-1024B. Images that directly relate to the ES-1016B are used when referring to the key differences between the two models.

Graphics Icons Key

Switch 	Computer 	Server 
Printer 	Router 	Switch 

User Guide Feedback

Help us help you. E-mail all User Guide-related comments, questions or suggestions for improvement to techwriters@zyxel.com.tw or send regular mail to The Technical Writing Team, ZyXEL Communications Corp., 6 Innovation Road II, Science-Based Industrial Park, Hsinchu, 300, Taiwan. Thank you!

CHAPTER 1

Getting to Know Your Switch

This chapter describes the key features, benefits and applications of your switch.

1.1 Introduction

The switch is a multi-port switch that can be used to build high-performance switched workgroup networks. The switch is a store-and-forward device that offers low latency for high-speed networking. The switch is designed for workgroups, departments or backbone computing environments for SME (small, medium enterprise) businesses.

Figure 1 ES-1016B

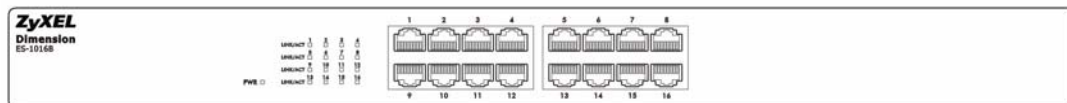
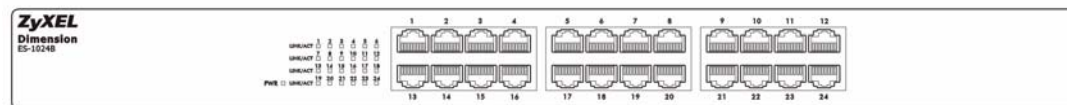


Figure 2 ES-1024B



1.2 Features

The following are the essential features of the switch.

- Conforms to IEEE 802.3, 802.3u, and 802.3x standards.
- Auto-negotiating 10/100Mbps Ethernet RJ-45 ports.
- Auto-sensing crossover for all 10/100Mbps Ethernet RJ-45 ports.
- Supports Back-Pressure-Based flow control on Half-duplex ports.
- Supports Pause-Frame-Based flow control on Full-duplex ports.
- Supports store-and-forward switching.
- Supports automatic address learning.
- Full wire speed forwarding rate.
- Embedded 8K MAC address table providing 8000 MAC addresses entries.
- Power, LK/ACT and FD/COL LEDs.
- Standard 19-inch rack-mount design.

1.3 Package Contents

Compare the contents of your ES package with the checklist below. If any item is missing or damaged, please contact your local dealer.

- An Ethernet switch
- Power cord
- This User's Guide
- Four self-adhesive rubber feet
- Rack mount brackets

1.4 Applications

This section provides two network topology examples in which the switch is used.

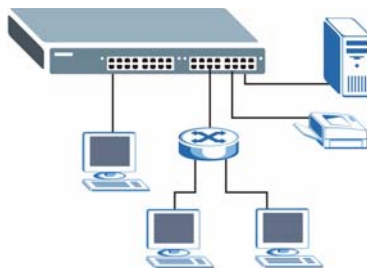
1.4.1 Standalone Workgroup

In this application, the switch is an ideal solution for small networks where rapid growth can be expected in the near future.

The switch can be used standalone for a group of heavy traffic users. You can connect computers directly to the switch's port or connect other switches to the switch.

In this example, all computers can share high-speed applications on the server. To expand the network, simply add more networking devices such as switches, routers, computers, print servers etc.

Figure 3 Standalone Workgroup Example

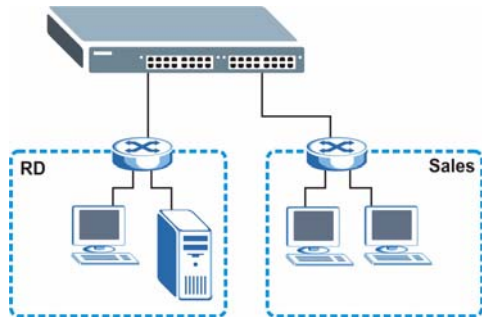


1.4.2 Bridging

With its large address table and high performance, the switch is an ideal solution for department networks to connect to the corporate backbone or for connecting network segments.

The following figure depicts a typical segment bridge application of the switch in an enterprise environment. The two networks (**RD** and **Sales**), the standalone server and the computers can all communicate with each other and share all network resources.

Figure 4 Bridging Example



CHAPTER 2

Hardware Description and Connection

2.1 Rear Panel

The three-pronged power receptacle is located on the rear panel of the switch. Refer to the [Appendix A on page 17](#) for power specification.

Figure 5 Rear Panel



2.1.1 Rear Panel Power Connection

Connect one end of the supplied power cord to the power receptacle on the back of the switch and the other end to the appropriate power source.

2.2 Front Panel

The front panel of the switch includes the auto-negotiating 10Base-T/100Base-TX RJ-45 ports and the LEDs.

2.2.1 RJ-45 Auto-negotiating Ports

The 10Base-T/100Base-TX RJ-45 ports are auto-negotiating and auto-crossover.

An auto-negotiating port can detect and adjust to the optimum Ethernet speed (10/100Mbps) and duplex mode (full duplex or half duplex) of the connected device.

An auto-crossover (auto-MDI/MDI-X) port automatically works with a straight-through or crossover Ethernet cable.

2.2.2 Front Panel Connections

You can use unshielded twisted pair (UTP) or shielded twisted-pair (STP) Ethernet cables for RJ-45 ports. The following table describes the types of network cable used for the different connection speeds.

Note: Make sure the cable length between connections does not exceed 100 meters (328 feet).

Table 1 Network Cable Types

SPEED	NETWORK CABLE TYPE
10 Base-T	100Ω 2-pair UTP/STP Category 3, 4 or 5
100 Base-TX	100Ω 2-pair UTP/STP Category 5

2.2.3 Front Panel LEDs

The LED Indicators give real-time information about the status of the switch. The following table provides descriptions of the LEDs.

Figure 6 Front Panel LEDs (ES-1024A)

		1	2	3	4	5	6
	LINK/ACT	<input type="checkbox"/>	<input type="checkbox"/>	<input type="checkbox"/>	<input type="checkbox"/>	<input type="checkbox"/>	<input type="checkbox"/>
	LINK/ACT	<input type="checkbox"/>	<input type="checkbox"/>	<input type="checkbox"/>	<input type="checkbox"/>	<input type="checkbox"/>	<input type="checkbox"/>
	LINK/ACT	<input type="checkbox"/>	<input type="checkbox"/>	<input type="checkbox"/>	<input type="checkbox"/>	<input type="checkbox"/>	<input type="checkbox"/>
PWR	<input type="checkbox"/> LINK/ACT	<input type="checkbox"/>	<input type="checkbox"/>	<input type="checkbox"/>	<input type="checkbox"/>	<input type="checkbox"/>	<input type="checkbox"/>

The following table describes the LEDs.

Table 2 The Front Panel LED Descriptions

LED	COLOR	STATUS	DESCRIPTION
PWR	Green	On	The switch is on and receiving power.
		Off	The switch is not receiving power.
LINK/ACT	Green	On	The port is connected to an Ethernet network.
		Blinking	The port is receiving or transmitting data.
		Off	The port is not connected to an Ethernet network.

2.3 Hardware Installation

Refer to the Quick Start Guide for hardware installation instructions.

CHAPTER 3

Troubleshooting

This section describes common problems you may encounter with the switch and possible solutions.

3.1 Introduction

Troubleshoot the switch using the LEDs to detect problems.

3.1.1 PWR LED

The PWR LED on the front panel does not light up.

Table 3 Troubleshooting Power LED

STEP	CORRECTIVE ACTION
1	Check the connections from your switch to the power source. Make sure you are using the supplied power cord and that you are using an appropriate power source. Refer to the product specifications.
2	Make sure the power source is turned on and that the switch is receiving sufficient power.
3	If these steps fail to correct the problem, contact your local distributor for assistance.

3.1.2 LINK/ACT LED

The **LINK/ACT** LED does not light up when a device is connected.

Figure 7 Troubleshooting LINK/ACT LED

STEP	CORRECTIVE ACTION
1	Verify that the attached device(s) is turned on and properly connected to your switch.
2	Make sure the network adapters are working on the attached devices.
3	Verify that proper network cable type is used and its length does not exceed 100 meters. For more information on network cable types, see Section 2.2.2 on page 14 .

3.2 Improper Network Cabling and Topology

Improper network cabling or topology setup is a common cause of poor network performance or even network failure.

Figure 8 Troubleshooting Improper Network Cabling and Topology

PROBLEM	CORRECTIVE ACTION
Faulty cables	Using faulty network cables may affect data rates and have an impact on your network performance. Replace with new standard network cables.
Non-standard network cables	Non-standard cables may increase the number of network collisions and cause other network problems that affect your network performance. Refer to Section 2.2.2 on page 14 for more information on network cable types.
Cabling Length	If you use longer cables than are needed, transmission quality may be affected. The network cables should not be longer than the limit of 100 meters.
Too many hubs between the computers in the network	Too many hubs (or repeaters) between the connected computers in the network may increase the number of network collision or other network problems. Remove unnecessary hubs from the network.
A loop in the data path	A data path loop forms when there is more than one path or route between two networked computers. This results in broadcast storms that will severely affect your network performance. Make sure there are no loops in your network topology.

APPENDIX A

Product Specifications

These are the product specifications.

Table 4 Product Specifications

Standard	IEEE802.3 10BASE-T Ethernet IEEE802.3u 100BASE-TX Fast Ethernet IEEE802.3x Flow Control
Protocol	CSMA/CD
Technology	Store-and-Forward switching architecture Supports broadcast storm control
Non-blocking Wire Speed	ES-1016B: 3.2 Gb ES-1024B: 4.8 Gb
Transfer Rate	Ethernet: 10 Mbps (half duplex), 20 Mbps (full duplex) Fast Ethernet: 100 Mbps (half duplex), 200 Mbps (full duplex)
Data Forwarding Rate	14880 pps for 10 Base-T (Ethernet) 148800 pps for 100 Base-T (Fast Ethernet)
Connector	RJ-45; Auto-MDIX on all ports
MAC Address	8K MAC address table
Memory Buffer	1.25 Mbps
Network Cable	10 Base-T: 100Ω 2-pair UTP/STP Cat. 3, 4, 5 100 Base-TX: 100Ω 2-pair UTP/STP Cat. 5
LED	Per port: LINK/ACT Per unit: PWR
Power Supply	100-240 VAC, 50~60Hz 0.24A max.
Temperature	Operating: 0° C~ 50° C (32° F ~ 122° F)
Humidity	Operating: 10% ~ 90% (Non-condensing)
Dimension L x W x H (mm)	440 x 120 x 44
Weight	ES-1016B: 1370 g ES-1024B: 1448 g
EMI & Safety	FCC Class B, CE, C-Tick

Index

Numerics

10 Mbps Ethernet [14](#)
110V AC [3](#)
230V AC [3](#)

A

AC [3](#)
Accessories [3](#)
Airflow [3](#)
Applications [10](#)
 Segment Bridge [10](#)
Authority [2](#)

B

Basement [3](#)

C

Cables, Connecting [3](#)
Cabling Length [16](#)
Changes or Modifications [2](#)
Connecting Cables [3](#)
Copyright [1](#)
Corrosive Liquids [3](#)
Covers [3](#)
Customer Support [5](#)

D

Damage [3](#)
Dampness [3](#)
Danger [3](#)
Data path loop [16](#)
Denmark, Contact Information [5](#)

Dust [3](#)

E

Electric Shock [3](#)
Electrical Pipes [3](#)
Electrocution [3](#)
Europe [3](#)
Exposure [3](#)

F

Faulty cables [16](#)
FCC
 Compliance [2](#)
Finland, Contact Information [5](#)
France, Contact Information [5](#)
Front Panel [13](#)
Front Panel Connections [14](#)

G

Gas Pipes [3](#)
Germany, Contact Information [5](#)

H

High Voltage Points [3](#)

L

LED Descriptions
 LK/ACT [14](#)
 PWR [14](#)
Lightning [3](#)
Liquids, Corrosive [3](#)

M

Modifications [2](#)

N

Network Cable Length Limit [14](#)

Network Cable Types [14](#)

100Mbps [14](#)

10Mbps [14](#)

Non-standard network cables [16](#)

North America [3](#)

North America Contact Information [5](#)

Norway, Contact Information [5](#)

O

Opening [3](#)

P

Package Contents [10](#)

Pipes [3](#)

Pool [3](#)

Power Adaptor [3](#)

Power Cord [3](#)

Power Outlet [3](#)

Power Supply [3](#)

Power Supply, repair [3](#)

Product specification [17](#)

Q

Qualified Service Personnel [3](#)

Quick start guide [7](#)

R

Rear Panel [13](#)

Rear Panel Power Connection [13](#)

Regular Mail [5](#)

Removing [3](#)

Repair [3](#)

Risk [3](#)

Risks [3](#)

S

Safety Warnings [3](#)

Service [3, 4](#)

Service Personnel [3](#)

Shock, Electric [3](#)

Spain, Contact Information [5](#)

Standalone Workgroup [10](#)

Supply Voltage [3](#)

Support Disk [7](#)

Support E-mail [5](#)

Sweden, Contact Information [5](#)

Swimming Pool [3](#)

Syntax Conventions [7](#)

T

Telephone [5](#)

Thunderstorm [3](#)

Troubleshooting

Improper Network Cabling and Topology [16](#)

LK/ACT LED [15](#)

Power LED [15](#)

V

Vendor [3](#)

Ventilation Slots [3](#)

Voltage Supply [3](#)

Voltage, High [3](#)

W

Wall Mount [3](#)

Warnings [3](#)

Water [3](#)

Water Pipes [3](#)

Web Site [5](#)

Wet Basement [3](#)

Worldwide Contact Information [5](#)

Z

ZyXEL Limited Warranty

Note [4](#)