



# POSEIDON 2-31, 3-36, 5-47, 5-53 PE POSEIDON 5-54 DE



**Nilfisk  
ALTO**

*Why Compromise*

Ⓓ	Instruktionsbog .....	3 - 14
Ⓔ	User manual .....	15 - 26
Ⓓ	Betriebsanleitung .....	27 - 38
Ⓕ	Manuel d'instructions .....	39 - 50
Ⓘ	Manuale di istruzioni .....	51 - 62
Ⓔ	Manual de instrucciones .....	63 - 74
Ⓔ	Υχειρίδιο οδηγίων .....	75 - 86
Ⓕ	Manual de Instruções .....	87 - 98
Ⓔ	Руководство .....	99 - 110
Ⓕ	Instrukcja obsługi .....	111 - 122
Ⓒ	Návod k obsluze .....	123 - 134
Ⓔ	Üzemeltetési útmutató .....	135 - 146
Ⓒ	Návod na používanie .....	147 - 158

**Wap  
KEW**

TECHNOLOGIES

# Contents



<b>Symbols</b>	.....	16
<b>1 Important safety notes</b>	.....	16
<b>2 Description</b>	2.1 Intended use.....	19
	2.2 Operating elements .....	18
<b>3 Before starting the pressure washer</b>	3.1 Setting up the pressure washer.....	19
	4.1 Connections .....	19
<b>4 Operation and use</b>	4.2 Start the pressure washer .....	20
	4.3 Using detergents .....	21
<b>5 After using the pressure washer</b>	5.1 Switching off the pressure washer .....	21
	5.2 Disconnecting supply lines .....	21
	5.3 Storing the cleaner (frost-free) .....	22
<b>6 Maintenance</b>	6.1 Maintenance plan .....	22
	6.2 Maintenance work .....	22
<b>7 Troubleshooting</b>	.....	24
<b>8 Further information</b>	8.1 Recycling the pressure washer .....	25
	8.2 Guarantee .....	25
	8.3 Technical data .....	26
	8.4 Declaration of Conformity .....	26



Before starting up your high-pressure washer for the first time, this instruction manual must be read through carefully. Save the instructions for later use.



Safety instructions marked with this symbol must be observed to prevent danger to persons.



This symbol is used to mark safety instructions that must be observed to prevent damage to the machine and its performance.



This symbol indicates tips and instructions to simplify work and to ensure a safe operation.

# 1 Important safety notes



Before using the high-pressure washer, be sure to also read the enclosed operating instructions and keep them within reach at all times.

The high-pressure washer may only be used by persons instructed in its use and who have been expressly authorised to do so.

## General

Use of the high-pressure washer is subject to the applicable local regulations.

In addition to the operating instructions and the binding accident prevention regulations in the country of use, the generally recognised rules for safe working must also be observed.

Any method of use endangering the safety of persons or equipment is forbidden.

## Before use

Before use, check that the high-pressure cleaner is in a safe and proper condition.

Operate the pressure washer only in an upright position!

### Important notes:

Do not connect the pressure washer directly to the public drinking water mains (observe DIN 1988 and EN 1717).

A connection is permitted, however:

- briefly to a pipe interrupter with moving section
- with a free outlet

Water may also be drawn from an open container or from a well or surface water not intended for the drinking water supply. Please use suction set for this. Ensure that neither dirty water nor liquids containing solvents are sucked in.

Please observe the regulations and provisions applicable in your country. Before putting the high-pressure washer into service, carry out a visual check of all the major components.

High-pressure jets can be dangerous if misused. The jet must not be directed at persons, animals, live electrical equipment or the pressure washer itself.

During operation of the washer, recoil forces are produced at the spray lance and, when the lance is held at an angle, a torque is also created. The lance must therefore be held firmly in both hands.

## Risk of injury!

Do not direct the jet towards yourself or towards other persons in order to clean clothes or footwear.

Do not use the washer when other people without protective

clothing are in the working area. Check that cleaning will not result in dangerous substances (e.g. asbestos, oil) being washed off the object to be cleaned and harming the environment.

Do not clean delicate parts made of rubber, fabric, etc. with the round jet. Hold the nozzle at a distance of at least 15 cm when cleaning with the high-pressure flat jet.

Although extremely easy to operate, children should not be allowed to use the pressure washer.

Do not use the high-pressure hose for lifting loads.

Do not continue to use the washer if the quick coupling or high-pressure hose is damaged.

Never use the machine in areas where there is danger of fire or explosion. When using the pressure washer, stand at least 1 m from buildings, etc.

Ensure an adequate air circulation. Do not cover the washer or operate it in inadequately ventilated rooms! The exhaust fumes are dangerous!

Store the pressure washer where it will not be exposed to frost!

Never operate the pressure washer without water. Even brief shortages of water result in severe damage to the pump seals.

### Maintenance and repair

**CAUTION!**  
**Before cleaning and servicing the high pressure washer, always remove the ignition plug cable first.**

Carry out only the maintenance operations described in the operating instructions. Use only original Nilfisk-ALTO spare parts. Do not make any technical modifications to the high pressure washer.

**CAUTION!**  
High pressure hoses, fittings and couplings are important for the safety of the washer. Use only high pressure parts approved by the manufacturer!

**CAUTION!**  
Failure to observe these instructions can endanger your safety.

Please contact the Nilfisk-ALTO service department or an authorised specialist work-shop for all other maintenance or repair work!

### Testing

The machine satisfies IEC/EN 60335-2-79 standards.

The high pressure washer should be examined as needed or at least once a year by a technician to make sure that it is fail-safe.

Our service technicians are at your disposal for assistance and advice.

### Safety device

The high pressure pump is equipped with a safety valve that redirects the by-pass pressure back to the suction side of the pump.

The safety device is set and sealed at the factory and must not be adjusted.

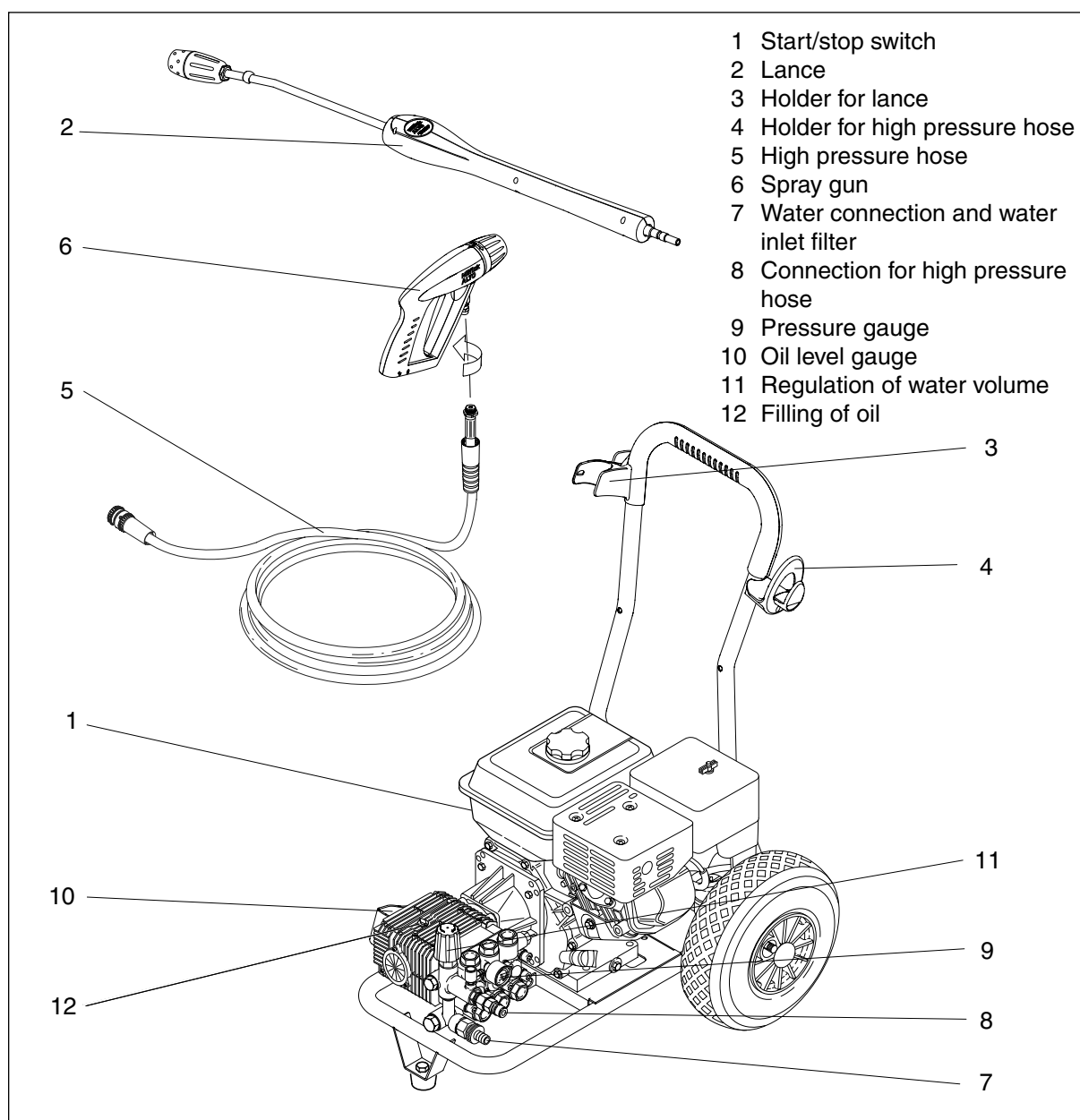
## 2 Description

### 2.1 Intended use

This high pressure washer has been designed for professional use in

- agriculture
- transport industry
- construction industry
- etc.

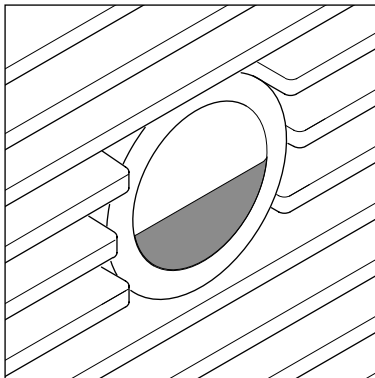
### 2.2 Operating elements



## 3 Before starting the pressure washer

EN

### 3.1 Setting up the pressure washer

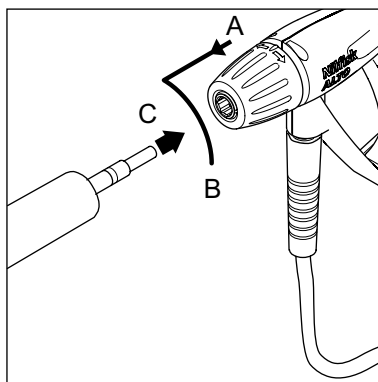


1. Before using the pressure washer for the first time, check it carefully to detect any faults or damage.
2. In the event of any damage contact your Nilfisk-ALTO dealer immediately.
3. Check whether the oil level is in the middle of the oil inspection glass. This also applies to machines with gear.

## 4 Operation and use

### 4.1 Connections

#### 4.1.1 Connecting the lance to the spray gun



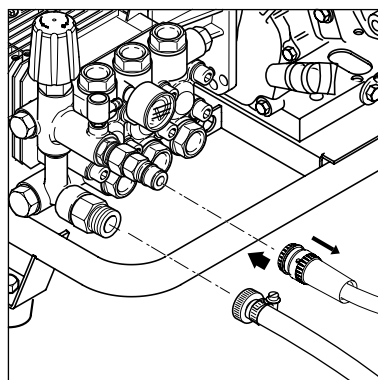
1. Pull the blue quick coupling of the spray gun forward and lock it by turning it to the left.
2. Insert the nipple of the lance into the quick coupling and turn the blue quick coupling grip to the right.
3. Pull the lance (or other accessory) forward to check that it is securely attached to the spray gun.



#### NOTE!

Always remove any dirt from the nipple before connecting the lance to the spray gun.

#### 4.1.2 Connecting the high pressure hose and the water hose



1. Connect the high pressure hose to the high pressure inlet by means of the quick coupling. Use max. 50 m extension hose.
2. Before connecting the water hose to the washer, rinse the water hose briefly to prevent sand and other dirt from entering into the washer.
3. Open the tap.

(continued -->)



**NOTE!**

See chapter 8.3 for required quantity of water and water pressure.

In the case of poor water quality (sand, etc.), we recommend that a fine water filter is fitted in the water inlet.

#### 4.1.3 Fuelling



**WARNING!**

Always shut off the engine and let it cool for at least two minutes before fuelling. Avoid spilling fuel. If you do spill fuel when fuelling, do not start the engine before the spilled fuel has evaporated. If the washer is on a trailer, any fuel spills must be wiped up before the machine is started.

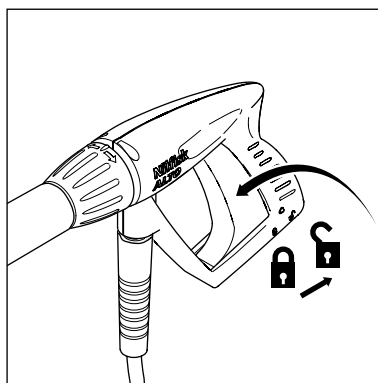
Never expose the machine to an open flame. Smoking is prohibited during fuelling. Also read the operating manual for the fuel engine.

**Note:** Never operate the machine in a closed room; the exhaust fumes are dangerous.

**Follow the safety instructions in chapter 1!**

#### 4.2 Start the washer

##### 4.2.1 Switching on the washer when it is connected to a water supply



1. Start the engine. (See the operating manual for the fuel engine.)
2. Unlock the spray gun and operate it.
3. Lock the safety catch even during short pauses.

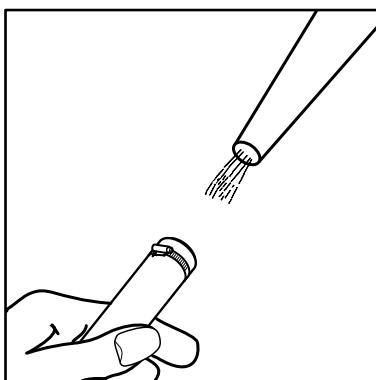


**NOTE!**

Operate the spray gun several times at short intervals to vent the system.

##### 4.2.2 Switching on the washer when it is connected to open tanks (suction mode)

1. Before connecting the suction hose to the washer, fill the hose with water.



2. Start the washer.
3. Unlock the spray gun and activate it.
4. When using this machine in suction mode, first ensure that the system has been bled of air by letting the

machine run without spray lance mounted until all air has escaped.

During work breaks of more than three minutes, switch off the washer.



**NOTE!**

For automatic suction from a tank, watercourse or similar supply, the inlet hose must be filled with water before you start. The suction height depends on the water temperature. Max. suction height (see section 8.3 Technical Data) is reached with cold water (up to 8°C). With 70°C/60°C warm water, the machine must be under or at the water level.

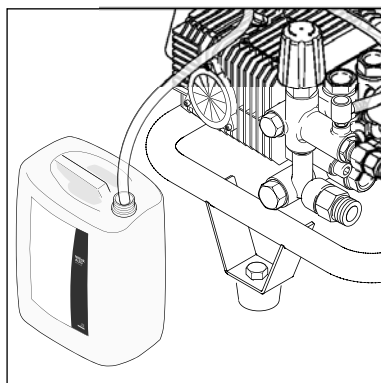
(continued -->)

If the water being suctioned contains particles, a suction filter must be mounted on the end of the hose.

In case of risk of running sands, a sand filter must be attached.

### 4.3 Using detergents

Detergent can be added by means of the detergent injector.



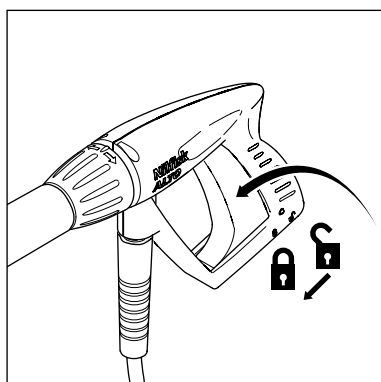
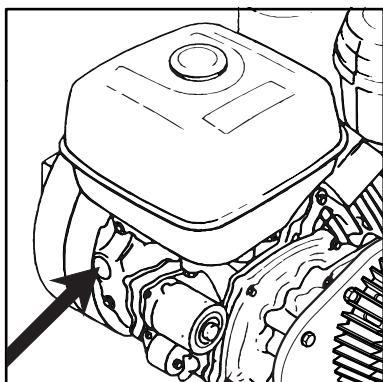
1. Dilute detergent according to the manufacturer's instructions.
2. Set the pressure to the lowest setting on the lance.



**CAUTION!**  
Never allow detergent to dry on the surface to be cleaned as this may cause damage.

## 5 After using the washer

### 5.1 Stop the pressure washer



1. Stop the engine.
2. Close the tap.
3. Operate the spray gun until the washer is depressurized.
4. Lock the safety catch.

### 5.2 Disconnecting supply lines

1. Shut the fuel cock.
2. Remove the water hose from the washer.



### 5.3 Storing the washer (frost-protected)



1. Store the pressure washer in a dry room without danger of frost.

#### IMPORTANT!

If the high-pressure washer is stored in a room with temperatures around or below 0°C, anti-freeze should be drawn into the pump beforehand:

1. Remove the water inlet hose from the washer.
2. Remove the lance.
3. Start the washer and stop it again after max. one minute.

4. Connect the suction hose to the water inlet of the washer and place it in a tank containing anti-freeze.
5. Start the washer.
6. Hold the spray gun over the tank containing anti-freeze and activate it to start suction of anti-freeze.
7. During suction operate the spray gun two or three times.
8. Lift the suction hose from the tank containing anti-freeze and activate the spray gun to pump out the remaining anti-freeze.
9. Stop the washer.

## 6 Maintenance

### 6.1 Maintenance plan

	weekly	every six months or 500 operating hours	as required
6.2.1 Clean water filter	●		
6.2.2 Clean high pressure nozzle			●
6.2.3 Check oil level	●		
6.2.4 Change oil - <b>Note:</b> First time after 50 hours		●	

Maintenance of motor according to separate operating instructions from the engine supplier

### 6.2 Maintenance work

#### 6.2.1 Clean water filter

A water filter is fitted on the water inlet to prevent large particles of dirt from entering into the pump.

1. Unscrew the union nut.
2. Remove the filter and rinse it. Replace damaged filter.
3. Tighten the union nut gently, so as to avoid damaging the gasket.

### 6.2.2 Clean high pressure nozzle



A blocked nozzle causes excessive pump pressure. It must therefore be cleaned immediately.

1. Stop the washer.
2. Remove the lance.
3. Clean the nozzle with a needle.
4. Rinse the lance with water from the nozzle side.

#### **WARNING!**

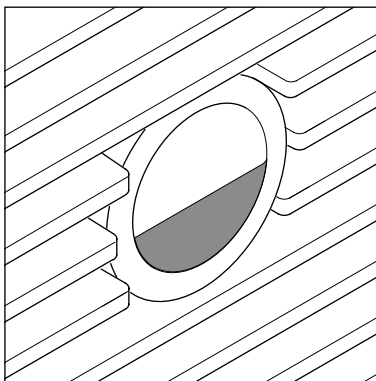
Use the cleaning needle only when the spray lance has been removed.



#### **NOTE!**

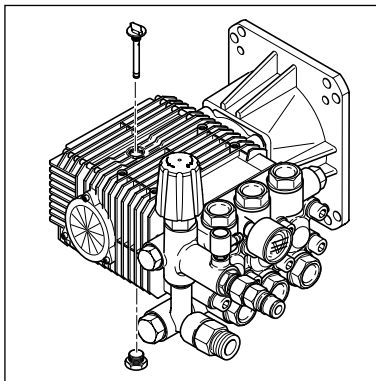
The fuel engine stops automatically if the oil level is low. You can start the petrol engine again once you have added oil (does not apply to POSEIDON 2-31 PE).

### 6.2.3 Checking the oil level



1. Check whether the oil level is in the middle of the oil inspection glass. Top up with oil if necessary (see section 8.3 for type of oil).

### 6.2.4 Changing the oil



1. Before changing the oil, allow the pressure washer to become warm.
2. Unscrew the plugs at the top and the bottom of the pump.
3. Allow the oil to drain into a suitable container (min. 1 l capacity) and dispose of oil in compliance with regulations.
5. Fill pump with fresh oil (see 8.3 for oil type and quantity).
6. Check the oil level (see 6.2.3).

## 7

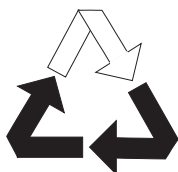
# Troubleshooting

Fault	Cause	Remedy
<b>Pressure drop</b>	> Air in the system	<ul style="list-style-type: none"> <li>• Vent the system by operating the spray gun several times at short intervals. If necessary, dismount the lance (see section 4.2.2).</li> </ul>
	> High-pressure nozzle blocked/worn	<ul style="list-style-type: none"> <li>• Clean/replace the high-pressure nozzle.</li> </ul>
	> Pressure control on the lance is not set correctly	<ul style="list-style-type: none"> <li>• Set the required working pressure.</li> </ul>
	> Engine speed too low	<ul style="list-style-type: none"> <li>• Contact Nilfisk-ALTO Service Department.</li> </ul>
<b>Pressure fluctuations</b>	> Lack of water	<ul style="list-style-type: none"> <li>• Open the tap.</li> </ul>
	> Pump/accessories partially frozen	<ul style="list-style-type: none"> <li>• Thaw machine and accessories.</li> </ul>
	> Water inlet hose is too long or its cross-section too small	<ul style="list-style-type: none"> <li>• Use prescribed size of water inlet hose.</li> </ul>
	> Lack of water caused by blocked water filter	<ul style="list-style-type: none"> <li>• Clean the water filter in the water connection (never operate the machine without water filter mounted!)</li> </ul>
<b>In suction mode</b>	> Lack of water because max. permissible suction height has not been heeded	<ul style="list-style-type: none"> <li>• See chapter 4.2.2.</li> </ul>
	> Water too hot	<ul style="list-style-type: none"> <li>• See chapter 4.2.2.</li> </ul>
	> Pump draws in air (only possible in suction mode)	<ul style="list-style-type: none"> <li>• Check that the suction set is air-tight. Repeat aeration.</li> </ul>
<b>Excess pressure</b>	> Engine's throttle control is defective (accessory)	<ul style="list-style-type: none"> <li>• Give less gas/contact Nilfisk-ALTO Service Department.</li> </ul>
<b>The motor does not start</b>	> Low fuel level	<ul style="list-style-type: none"> <li>• Open fuel cock/fill with fuel.</li> </ul>
	> Low oil level in engine	<ul style="list-style-type: none"> <li>• Fill with oil.</li> </ul>
	> The pump is blocked or frozen	<ul style="list-style-type: none"> <li>• Thaw machine/contact Nilfisk-ALTO Service Department.</li> </ul>

Fault	Cause	Remedy
The motor stops	> Low oil level in engine	• Fill with oil.
When a detergent injector is used	> Injector is dirty or suction hose is blocked	• Clean.
	> Detergent tank is empty	• Fill the detergent tank.
	> The lance is not set to low pressure	• Adjust the lance to low pressure.
	> Low fuel level	• Open fuel cock/fill with fuel.

## 8 Further information

### 8.1 Recycling the pressure washer



If the pressure washer is discarded, make it unusable immediately

1. Dismount the ignition plug.

The pressure washer contains valuable materials that should

be recycled. Contact your local waste disposal site. If you have any queries, please contact your local authorities or your nearest dealer.

### 8.2 Guarantee

Your Nilfisk-ALTO product is guaranteed for 12 months from date of purchase (purchase receipt must be presented) on the following conditions:

- that defects are attributable to flaws or defects in materials or workmanship. (Usual wear and tear as well as misuse are not covered by the guarantee).
- that repairs have not been carried out or attempted by other than Nilfisk-ALTO-trained service staff.
- that only original accessories have been applied.

- that the product has not been exposed to abuse such as knocks, bumps or frost.
- that the instructions in the manual have been carefully observed.

A warranty repair comprises the replacement of defective parts, but it does not cover freight and packaging charges. Besides we refer to national Sale of Goods Act.

Any **illegitimate** guarantee repair will be invoiced. (I.e. malfunctions due to **causes** mentioned in section “**7 Trouble shooting**” of the instruction manual).

### 8.3 Technical data

		POSEIDON 2-31 PE	POSEIDON 3-36 PE	POSEIDON 5-47 PE	POSEIDON 5-53 PE	POSEIDON 5-67 PE	POSEIDON 5-54 DE
Working pressure	bar	140	140	190	200	230	195
Water flow (max)	l/h	700	840	900	1030	1150	1000
Water flow Q <sub>IEC</sub>	l/h	650	750	840	930	1100	950
Max. water inlet temperature	°C	60	60	60	60	70	70
Min./max. water inlet pressure	bar	1/10	1/10	1/10	1/10	1/10	1
Dimensions (LxWxH)	mm	800 x 565 x 1010					
Noise power level, LWA	dB(A)	93	101	105	104	105	105
Thrust	N	24	26	45	46	58	45
Suction height (at max. 8°C)	m	1	1.5	0.5	0.5	1	1
Oil quantity in pump	l	0.18	0.18	0.32	0.32	0.56	0.56
Oil quantity in motor	l	0.6	0.6	1.1	1.1	1.1	1.65
Oil type (motor/pump/gear)		SAE 15-40					
Vibrations		< 2,5 m/s <sup>2</sup>					

We reserve the right to make alterations.

### 8.4 EC Declaration of Conformity

		<b>Declaration of Conformity</b>	
Product:	High Pressure Washer		
Type:	POSEIDON 2-31 PE POSEIDON 3-36 PE POSEIDON 5-47 PE POSEIDON 5-53 PE POSEIDON 5-67 PE POSEIDON 5-54 DE		
Description:	250 bar / 20 MPa Petrol driven Diesel driven		
The design of the unit corresponds to the following pertinent regulations:	EEC Machine Directive EEC EMC Directive	98/37/EEC 2004/108/EEC	
Applied harmonised standards:	EN 2100-1, EN 12100-2 EN 60335-2-79 EN 55012		
Applied national standards and technical specifications:	DIN EN 60335-2-79		
 Dipl.-Ing. Wolfgang Nieuwkamp Test and Approvals		Bellenberg, 01.12.2005	

# Nilfisk ALTO

Why Compromise

<http://www.nilfisk-alto.com>

## HEADQUARTER

### DENMARK

Nilfisk-Advance Group  
Sognevej 25  
DK-2605 Brøndby  
Tel.: +45 4323 8100  
Fax: +45 4343 7700  
E-mail: [mail@nilfisk-advance.dk](mailto:mail@nilfisk-advance.dk)

## SALES COMPANIES

### AUSTRALIA

Nilfisk-ALTO  
48 Egerton St.  
P.O. Box 6046  
Silverwater, N.S.W. 2128  
Tel.: +61 2 8748 5966  
Fax: +61 2 8748 5960

### AUSTRIA

Nilfisk-Advance GmbH  
Nilfisk-ALTO  
Metzgerstrasse 68  
5101 Bergheim/Salzburg  
Tel.: +43 662 456 400-0  
Fax: +43 662 456 400-34  
E-mail: [info@nilfisk-alto.at](mailto:info@nilfisk-alto.at)  
[www.nilfisk-alto.at](http://www.nilfisk-alto.at)

### CANADA

Clarke Canada  
Part of the Nilfisk-Advance Group  
4080 B Sladeview Crescent, unit 1  
Mississauga, Ontario L5L 5Y5  
Tel.: +1 905 569 0266  
Fax: +1 905 569 8586

### CHINA

Nilfisk-Advance (Shenzhen) Ltd.  
Blok 3, Unit 130 1001 Honghua Road  
Int. Commercial & Trade Center  
Futian Free Trade Zone  
518038 Shenzhen  
Tel.: +86 755 8359 7937  
Fax: +86 755 8359 1063

### CZECH REPUBLIC

ALTO Česká Republika s.r.o.  
Zateckých 9  
14000 Praha 4  
Tel.: +420 24 14 08 419  
Fax: +420 24 14 08 439  
E-mail: [info@alto-cz.com](mailto:info@alto-cz.com)

### DENMARK

Nilfisk-ALTO  
Division of Nilfisk-Advance A/S  
Industrivej 1  
9560 Hadsund  
Tel.: +45 7218 2100  
Fax: +45 7218 2105  
E-mail: [salg@nilfisk-alto.dk](mailto:salg@nilfisk-alto.dk)  
E-mail: [service@nilfisk-alto.dk](mailto:service@nilfisk-alto.dk)  
[www.nilfisk-alto.dk](http://www.nilfisk-alto.dk)

Nilfisk-ALTO Food division  
Division of Nilfisk-Advance A/S  
Blytækkervej 2  
9000 Aalborg  
Tel.: +45 7218 2100  
Fax: +45 7218 2099  
E-mail: [scanio.technology@nilfisk-alto.dk](mailto:scanio.technology@nilfisk-alto.dk)  
[www.nilfisk-alto.com](http://www.nilfisk-alto.com)

### FRANCE

Nilfisk-ALTO  
ALTO France SAS  
Aéroparc 1  
19 rue Icare  
67960 Entzheim  
Tel.: +33 3 88 28 84 00  
Fax: +33 3 88 30 05 00  
E-mail: [info@nilfisk-alto.fr](mailto:info@nilfisk-alto.fr)  
[www.nilfisk-alto.com](http://www.nilfisk-alto.com)

### GERMANY

Nilfisk-Advance AG  
Nilfisk-ALTO Business Unit  
Guido-Oberdorfer-Strasse 10  
89287 Bellenberg  
Tel.: +49 0180 5 37 37 37  
Fax: +49 0180 5 37 37 38  
E-mail: [info@nilfisk-alto.de](mailto:info@nilfisk-alto.de)  
[www.nilfisk-alto.de](http://www.nilfisk-alto.de)

### GREECE

Nilfisk-Advance SA  
8, Thoukididou str.  
164 52 Argiroupolis  
Tel.: +30 210 96 33443  
Fax: +30 210 96 52187  
E-mail: [nilfisk-advance@clean.gr](mailto:nilfisk-advance@clean.gr)

### HOLLAND

Nilfisk-ALTO  
Division of Nilfisk-Advance BV  
Camerastraat 9  
3322 BB Almere  
Tel.: +31 36 546 07 60  
Fax: +31 36 546 07 61  
E-mail: [info@nilfisk-alto.nl](mailto:info@nilfisk-alto.nl)  
[www.nilfisk-alto.nl](http://www.nilfisk-alto.nl)

### HONG KONG

Nilfisk-Advance Ltd.  
2001 HK Worsted Mills Ind'l Bldg.  
31-39 Wo Tong Tsui St.  
Kwai Chung  
Tel.: +852 2427 5951  
Fax: +852 2487 5828

### HUNGARY

Nilfisk-Advance Kereskedelmi Kft.  
II. Rákóczi Ferenc út 10  
2310 Szigetszentmiklos-Lakihegy  
Tel.: +36 2447 5550  
Fax: +36 2447 5551  
E-mail: [info@nilfisk-advance.hu](mailto:info@nilfisk-advance.hu)  
Sales: [ertekezes@nilfisk-advance.hu](mailto:ertekezes@nilfisk-advance.hu)  
Service: [service@nilfisk-advance.hu](mailto:service@nilfisk-advance.hu)  
[www.nilfisk-advance.hu](http://www.nilfisk-advance.hu)

### ITALY

Nilfisk-ALTO  
Divisione di Nilfisk-Advance A/S  
Località Novella Terza  
26862 Guardamiglio (LO)  
E-mail: [d.puglia@nilfisk-advance.it](mailto:d.puglia@nilfisk-advance.it)

### JAPAN

Nilfisk-Advance Inc.  
1-6-6 Kita-shinyokohama, Kouhoku-ku  
Yokohama, 223-0059  
Tel.: +8145 548 2571  
Fax: +8145 548 2541

### MALAYSIA

Nilfisk-Advance Sdn Bhd  
Sd 14, Jalan KIP 11  
Taman Perindustrian KIP  
Sri Damansara  
52200 Kuala Lumpur  
Tel.: +60 3 603 6275 3120  
Fax: +60 3 603 6274 6318

### NORWAY

Nilfisk-Advance AS  
Bjørnerudveien 24  
1266 Oslo  
Tel.: +47 22 75 17 70  
Fax: +47 22 75 17 71  
E-mail: [info@nilfisk-alto.no](mailto:info@nilfisk-alto.no)  
[www.nilfisk-alto.no](http://www.nilfisk-alto.no)

### POLAND

Nilfisk-Advance Sp. Z.O.O.  
05-800 Pruszków  
ul. 3-go MAJA 8  
Tel.: +48 22 738 37 50  
Fax: +48 22 738 37 51  
E-mail: [info@nilfisk-alto.pl](mailto:info@nilfisk-alto.pl)  
[www.nilfisk-alto.pl](http://www.nilfisk-alto.pl)

### PORTUGAL

Nilfisk-ALTO  
Division of Nilfisk-Advance Lda.  
Sintra Business Park  
Zona Industrial Da Abrunheira  
Edificio 1, 1º A  
P2710-089 Sintra  
Tel.: +35 121 911 2670  
Fax: +35 121 911 2679  
E-mail: [mkt@nilfisk-advance.es](mailto:mkt@nilfisk-advance.es)

### RUSSIA

Nilfisk-Advance LLC  
Vyatskaya str. 27, bld. 7  
127015 Moscow  
Tel.: +7 495 783 96 02  
E-mail: [vasilieva@nilfisk-alto.ru](mailto:vasilieva@nilfisk-alto.ru)

### SINGAPORE

Nilfisk-Advance Pte. Ltd.  
Nilfisk-ALTO Division  
40 Loyang Drive  
Singapore 508961  
Tel.: +65 6 759 9100  
Fax: +65 6 759 9133  
E-mail: [sales@nilfisk-advance.com.sg](mailto:sales@nilfisk-advance.com.sg)

### SPAIN

Nilfisk-ALTO  
Division of Nilfisk-Advance S.A.  
Torre D'Ara  
Paseo del Rengle, 5 Pl. 10  
08302 Mataró  
Tel.: +34 902 200 201  
Fax: +34 93 757 8020  
E-mail: [mkt@nilfisk-advance.es](mailto:mkt@nilfisk-advance.es)  
[www.nilfisk-alto.com](http://www.nilfisk-alto.com)

### SWEDEN

ALTO Sverige AB  
Member of Nilfisk-Advance Group  
Aminogatan 18, Box 4029  
431 04 Mölndal  
Tel.: +46 31 706 73 00  
Fax: +46 31 706 0@nilfisk-alto.se  
[www.nilfisk-alto.se](http://www.nilfisk-alto.se)

### TAIWAN

Nilfisk-Advance Taiwan Branch  
No. 5, Wan Fang Road  
Taipei  
Tel.: +886 227 002 268  
Fax: +886 227 840 843

### THAILAND

Nilfisk-Advance Co. Ltd.  
89 Soi Chokechai-Ruammitr  
Viphavadee-Rangsit Road  
Layao, Jatuchak, Bangkok 10900  
Tel.: +66 2 275 5630  
Fax: +66 2 691 4079

### UNITED KINGDOM

Nilfisk-ALTO  
Division of Nilfisk-Advance Ltd.  
Bowerbank Way  
Gilwilly Industrial Estate, Penrith  
Cumbria CA11 9BQ  
Tel.: +44 1 768 86 89 95  
Fax: +44 1 768 86 47 13  
E-mail: [sales@nilfisk-alto.co.uk](mailto:sales@nilfisk-alto.co.uk)  
[www.nilfisk-alto.co.uk](http://www.nilfisk-alto.co.uk)

### USA

ALTO Cleaning Systems Inc.  
Part of the Nilfisk-Advance Group  
12249 Nations Ford Rd.  
Pineville, North Carolina 28134  
Tel.: +1 704 971 1240  
Fax: +1 704 971 1241  
E-mail: [info@altocsi.com](mailto:info@altocsi.com)