

Contents

◆ PREPARATION	
■ Safety Precautions	3
■ Name of Each Part	8
■ Remote Control – Buttons and Display	10
■ Inserting the Remote Control Batteries	10
■ Getting Started	11
◆ OPERATION	
■ Selecting Auto Mode	12
■ Selecting Cool Mode	13
■ Selecting Heat Mode	14
■ Selecting Dry Mode	15
■ Selecting Fan Mode	16
■ Selecting the Turbo Function	16
■ Selecting the Energy Saving Function	17
■ Selecting Good Morning Mode	18
■ Adjusting the Airflow Direction	20
■ Selecting Auto Cleaning Function	21
■ Setting the On Timer	22
■ Setting the Off Timer	23
■ Operating Your Air Conditioner Without the Remote Control	24
◆ RECOMMENDATIONS FOR USE	
■ Cleaning the Air Filter on Your Air Conditioner	25
■ Cleaning Deodorizing and Bio filter (Option)	25
■ Temperature and Humidity Ranges	26
■ Operating Recommendations	26
■ Solving Common Problems	27



Correct Disposal of This Product (Waste Electrical & Electronic Equipment)

(Applicable in the European Union and other European countries with separate collection systems)

This marking shown on the product or its literature, indicates that it should not be disposed with other household waste at the end of its working life. To prevent possible harm to the environment or human health from uncontrolled waste disposal, please separate this from other types of waste and recycle it responsibly to promote the sustainable reuse of material resources.

Household users should contact either the retailer where they purchased this product, or their local government office, for details of where and how they can take this item for environmentally safe recycling.

Business users should contact their supplier and check the terms and conditions of the purchase contract. This product should not be mixed with other commercial waste for disposal.

Register your product at www.samsung.com/global/register

Safety Precautions

The following safety precautions are provided to protect the users' safety and prevent property damage. Make sure to read the followings and use the air conditioner properly.

- ▶ Keep this user's manual together with the installation manual in a handy place so that you can find it whenever you need to see it after reading this manual thoroughly.



WARNING

- This indicates the possibility of serious injury or death.



CAUTION

- This indicates the possibility of serious injury or damage to environments when operated incorrectly.

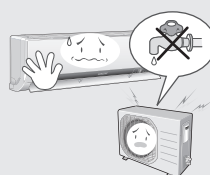
WHEN INSTALLING



- ▶ Do not install the unit in a place where it is exposed to inflammable gas leakage.



- ▶ Do not install the outdoor unit where there's the risk of dropping such as on high outer wall or outside of the terrace.



- ▶ Do not connect the ground to a gas pipe, water pipe, lightning rod or telephone earth.



- ▶ Contact the service center if the air conditioner is under water.



- ▶ The installation must be carried out by a licensed installer or qualified personnel when installing the unit for the first time or reinstalling it.

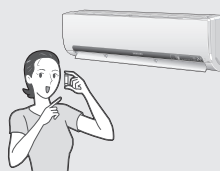
REGARDING POWER SOURCE



- ▶ Do not pull the electric wire or touch the power plug with the wet hands.



- ▶ Install the switch and circuit breaker only for air conditioner.



- ▶ Use the rated current fuse.



- ▶ Do not bend the electric wire by force or weigh down the air conditioner not to be out of order.



- ▶ Use the power source with separate wiring only for air conditioner.



- ▶ If the power plug is damaged, replace it by the manufacturer or qualified personnel to avoid the risk.

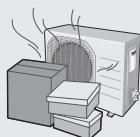


WARNING

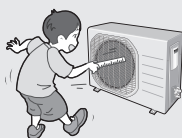
DURING OPERATION



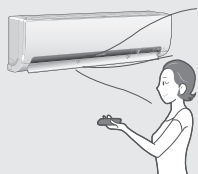
- ▶ Do not attempt to repair, move, modify or reinstall the unit on your own. Make sure that these installations are carried out by qualified personnel to avoid electric shock or fire.



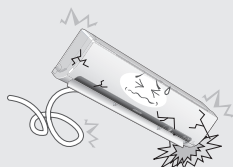
- ▶ Do not place any obstacles in front of the unit. Make sure that the unit is correctly ventilated at all times: Do not place clothing or other materials over it.



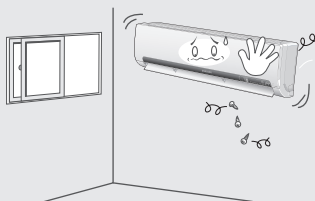
- ▶ Do not insert anything between the air outlet blades because the inner fan may be damaged and could cause injury. Keep children away from the unit.



- ▶ When using a wireless remote control, the distance should not be more than 7 meters from the air conditioner. (If applicable)



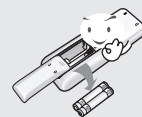
- ▶ The manufacturer declines any liability for damage resulting from modifications or errors in the electrical or hydraulic connections.



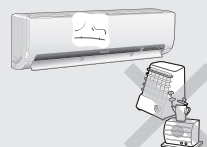
- ▶ Failure to observe the installation instruction, or use of the unit under conditions other than those indicated in the table 'Operating limit' of the unit installation manual, will immediately invalidate the unit warranty.



- ▶ Never spill any kind of liquid into the unit. Should this happen, unplug or main switch off the unit and contact an authorized service center.



- ▶ If the wireless remote control is not used for a long time, remove the batteries. (If applicable)



- ▶ Do not connect the electric heater to the air conditioner or repair it with your discretion.

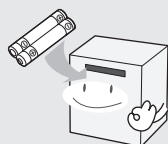


- ▶ Do not place any materials so that children cannot step on it.



WARNING

DISPOSING THE UNIT



- Before throwing out the device, it is necessary to pull back the battery cells and get rid of them safely for recycling reasons.



- When you need to dispose of the unit, consult your dealer. If pipes are removed incorrectly, refrigerant may blow out and come into contact with your skin, causing injury. Releasing refrigerant into the atmosphere also damages the environments.

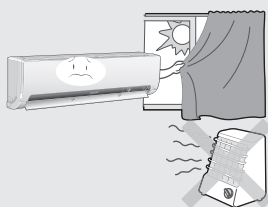


- Please recycle or dispose of the packaging material for this product in an environmentally responsible manner.

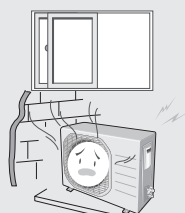


CAUTION

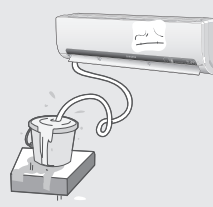
WHEN INSTALLING



- Install the air conditioner avoiding direct sunlight or heater, especially water.



- Install the outdoor unit so as to let the discharged air out properly. Avoid a place that may disturb your neighbor by noise.



- Install the drain hose to let the water run safely and correctly.



CAUTION

REGARDING POWER SOURCE



- ▶ Disconnect the circuit breaker when you don't use the air conditioner for a long time to save energy.

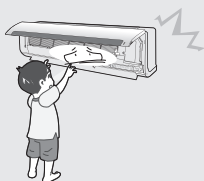


- ▶ Contact the service center or manufacturer if you want to repair the air conditioner.

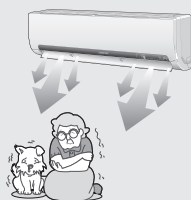


- ▶ Contact the service center after turning off the air conditioner if strange noise is heard, burning smell or smoke blow.

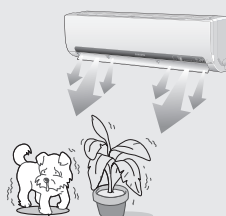
DURING OPERATION



- ▶ Do not open the front grille during operation.



- ▶ Do not use the air conditioner for a long time in a closed room or in a place where there's a baby or an old person.



- ▶ Avoid cold and hot air reaching to person, pet or a plant directly for a long time.



- ▶ Do not step on the air conditioner or put heavy object on it.



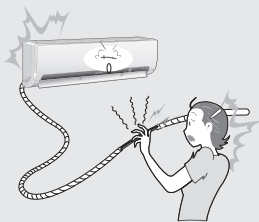
- ▶ Avoid the water from getting into the air conditioner.



- ▶ Do not drink the water from the air conditioner.

CAUTION

DURING OPERATION



- ▶ Do not touch the pipes connected to the air conditioner.

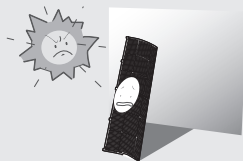


- ▶ Do not use the air conditioner to maintain the machine, food, pet, plant or cosmetics.



- ▶ Do not give excessive shock to the air conditioner.

OTHERS



- ▶ Be sure that the air filter not to be exposed to direct sunlight.



- ▶ Turn off the air conditioner and if the fan stops to operate, clean the air conditioner.



- ▶ Clean the air filter every 2 weeks.



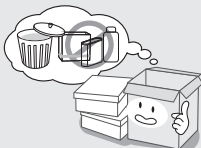
- ▶ Be sure to insert the air filter.



- ▶ The appliance is not intended for use by young children or infirm persons without supervision: Young children should be supervised to ensure that they do not play with the appliance.



- ▶ Do not clean the air conditioner by spraying water directly or with benzene, thinner or alcohol.



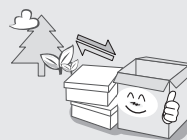
- ▶ Dispose of the packaging material in accordance with the local requirements.



- ▶ The maximum input power & current is measured according to the IEC standard and the input power & current is measured according to the ISO standard.



- ▶ The surface of the heat exchanger is sharp, so be careful of it when cleaning.

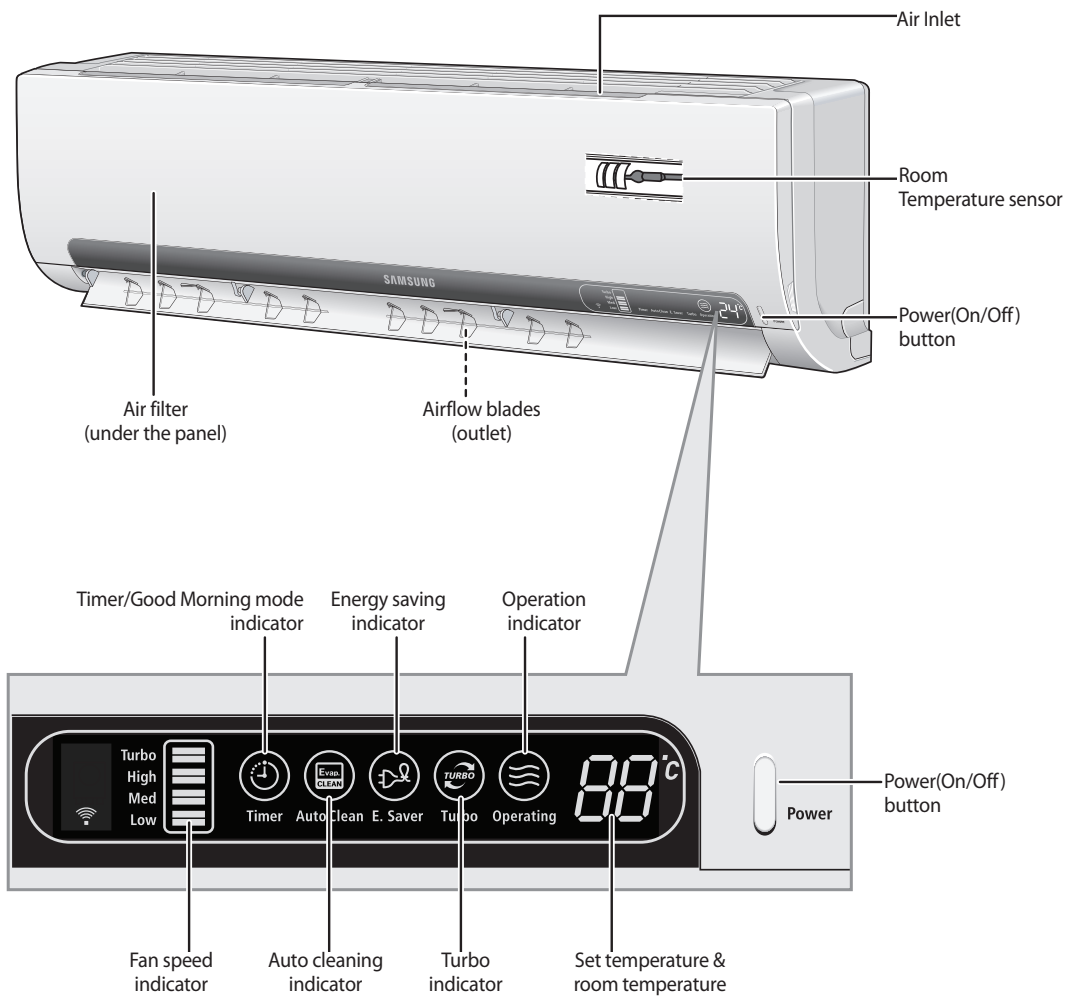


- ▶ All of the manufacturing and packaging materials used for your new appliance are compatible with the environment and can be recycled.

Name of Each Part

The design and shape can be changed according to the model.

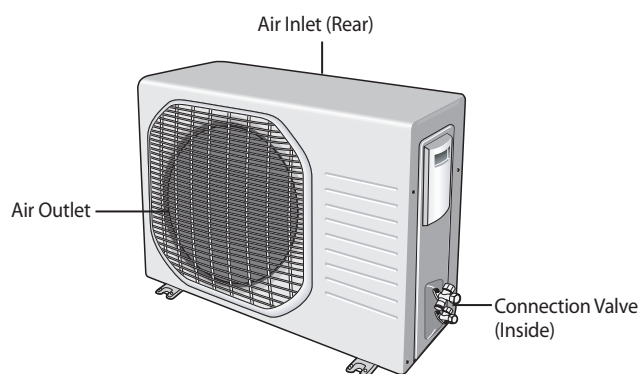
Indoor Unit



Outdoor Unit

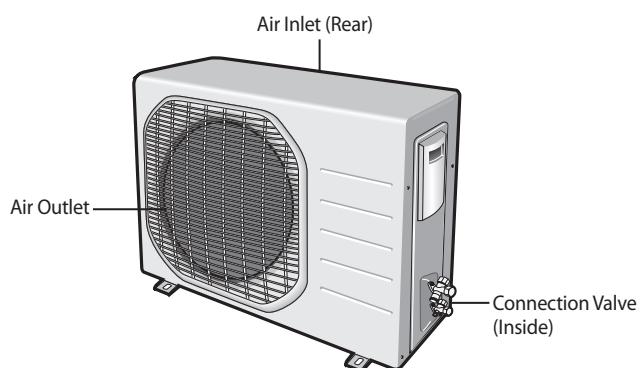
AQ09M** Series

AQ12M** Series



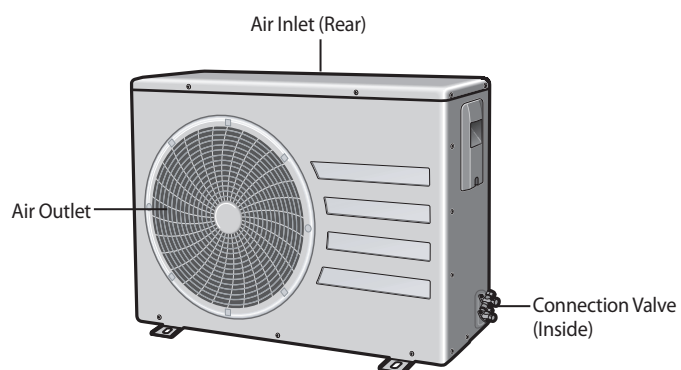
Outdoor Unit

AQ18M** Series

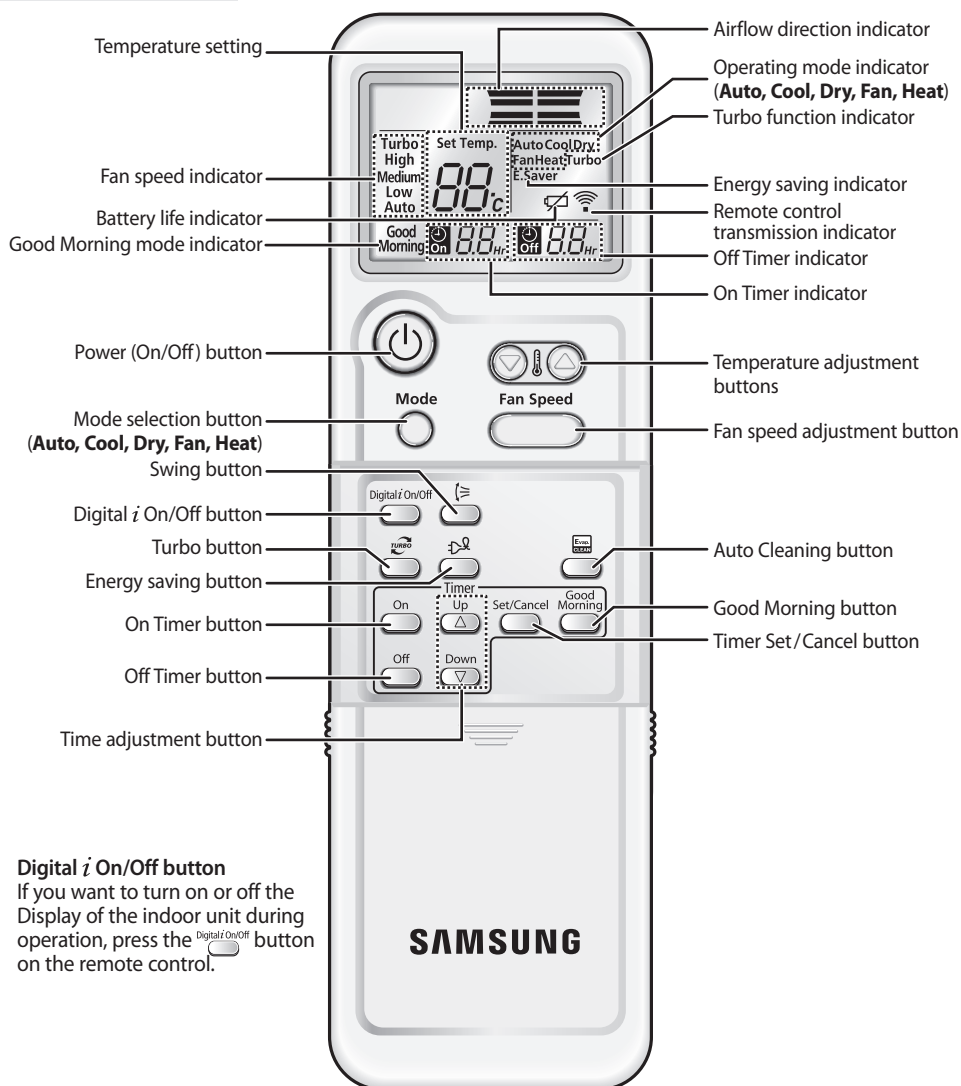


Outdoor Unit

AQ24M** Series

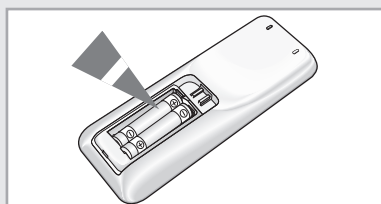
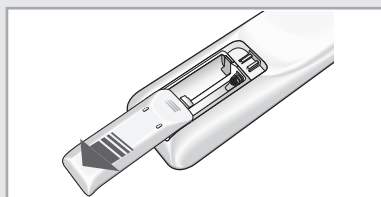


Remote Control - Buttons and Display



Note **Digital i On/Off button**
If you want to turn on or off the Display of the indoor unit during operation, press the **Digital i On/Off** button on the remote control.

Inserting the Remote Control Batteries



You must insert or replace the remote control batteries when:

- ◆ You purchase the air conditioner
- ◆ The remote control does not work correctly

Note

- ◆ Use two AAA, LR03 1.5V batteries.
- ◆ Do not use old and new batteries or different kinds of batteries together.
- ◆ Insert two batteries correctly as indicated by the + and - symbols.




- 1 Remove the battery cover in the rear of the remote control by pushing it with your thumb.
- 2 Insert two batteries, respecting the polarities as indicated by the + and - symbols.
- 3 Close the cover by sliding it back in place.

Getting Started

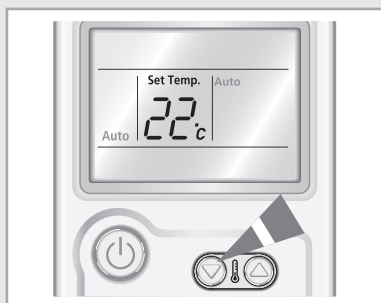
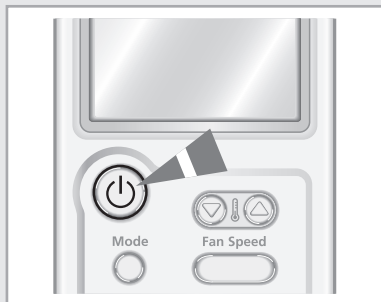
The User's Manual provides you with valuable information about your air conditioner. In order to take full advantage of the air conditioner's features, please read this manual carefully before using.

You have already seen the basic description of the unit on pages from 8 to 10. Starting with the next page, you will find a series of step-by-step procedures for each function available.

The illustrations in the step-by-step procedures use three different symbols:

		
PRESS	PUSH	HOLD DOWN

Selecting Auto Mode



You can select Auto mode if you want to cool or heat your room automatically. You can adjust the temperature in this mode.


- 1 Press the  (On/Off) button.

Result:

- ◆ The operation indicator on the indoor unit lights up.
- ◆ The air conditioner starts up in the mode you selected last.
- ◆ The indoor unit beeps.


- 2 Press the  button on the remote control until **Auto** is displayed.

Result:


- ◆ The indoor unit beeps each time you press the  button.
- ◆ The air conditioner runs in Auto mode.
- ◆ Auto mode cools or heats the room depending on the set temperature.
- ◆ The air conditioner changes from Cool or Heat mode automatically, depending on the current temperature.

Note

You can change modes at any time.

- 3 Press the  button to adjust the temperature until the required temperature is displayed.
You can set the temperature between 16°C and 30°C.

Result:

- ◆ Each time you press the  button:
 - The temperature adjusts by 1°C
 - The indoor unit beeps
- ◆ The fan speed adjusts automatically.

Selecting Cool Mode

You can select Cool mode if you want to cool your room.

You can adjust the temperature and the fan speed when cooling.


- 1 Press the  (On/Off) button.

Result:


- ◆ The operation indicator on the indoor unit lights up.
- ◆ The air conditioner starts up in the mode you selected last.
- ◆ The indoor unit beeps.

- 2 Press the  button on the remote control until **Cool** is displayed.


Result:


- ◆ The indoor unit beeps each time you press the  button.
- ◆ The air conditioner runs in Cool mode.

Note You can change modes at any time.

- 3 Press the  button to adjust the temperature until the required temperature is displayed.
You can set the temperature between 16°C and 30°C.

Result:

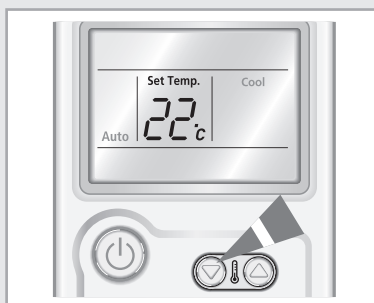
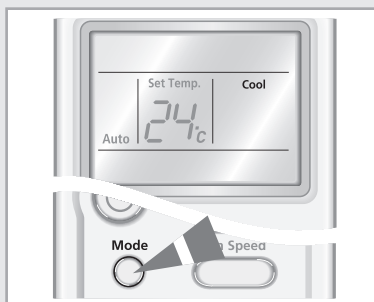
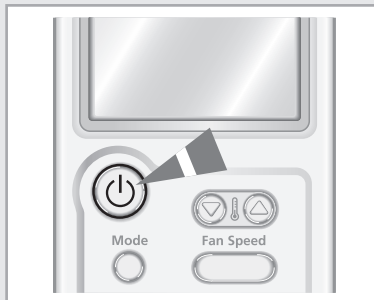
- ◆ Each time you press the  button:
 - The temperature adjusts by 1°C
 - The indoor unit beeps
- ◆ If the room temperature is higher than the selected temperature, the air conditioner starts cooling.
- ◆ If the room temperature reaches the set temperature, the air conditioner stops cooling, but the fan continues to operate.

- 4 Press the  button to select the fan speed until the required setting is displayed.

Auto → Low → Medium → High

Result: Each time you press the  button, the indoor unit beeps.

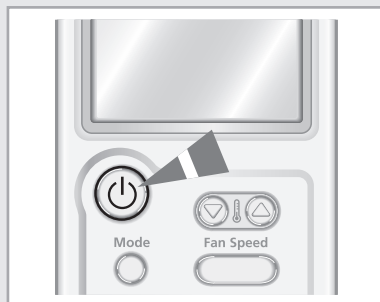
- 5 To control the airflow direction, refer to page 20.



Selecting Heat Mode

You can select Heat mode if you want to heat your room.

You can adjust the temperature and the fan speed when heating.




- 1 Press the  (On/Off) button.

Result:

- ◆ The operation indicator on the indoor unit lights up.
- ◆ The air conditioner starts up in the mode you selected last.
- ◆ The indoor unit beeps.


- 2 Press the  button on the remote control until **Heat** is displayed.

Result:

- ◆ The indoor unit beeps each time you press the  button.
- ◆ The air conditioner runs in Heat mode.


Note


You can change modes at any time.

- 3 Press the  button to adjust the temperature until the required temperature is displayed.

You can set the temperature between 16°C and 30°C.


Result:

- ◆ Each time you press the  button:
 - The temperature adjusts by 1°C
 - The indoor unit beeps
- ◆ If the room temperature reaches the set temperature (selected temperature+5°C), the air conditioner stops heating, but the fan is still operating.
- ◆ The air conditioner starts heating, provided that the room temperature is lower than the desired temperature (selected temperature+3°C).

- 4 Press the  button to select the fan speed until the required setting is displayed.

Auto → Low → Medium → High


Result:



- ◆ Each time you press the  button, the indoor unit beeps.
- ◆ For the first 3~5 minutes, the fan may not operate to prevent cool air from flowing out of the indoor unit. This helps to warm the air in your room sufficiently.

- 5 To control the airflow direction, refer to page 20.



Selecting Dry Mode

Select Dry mode if you want to dehumidify your room.
You can adjust the temperature in this mode.

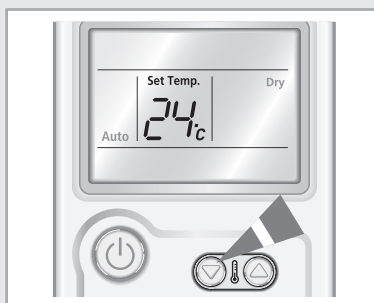
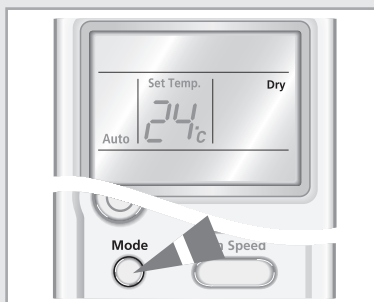
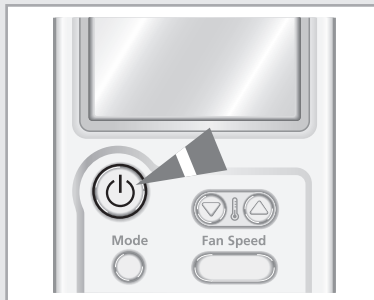
- 1 Press the  (On/Off) button.
Result:
 - ◆ The operation indicator on the indoor unit lights up.
 - ◆ The air conditioner starts up in the mode you selected last.
 - ◆ The indoor unit beeps.

- 2 Press the  button on the remote control until **Dry** is displayed.
Result:
 - ◆ The indoor unit beeps each time you press the  button.
 - ◆ The air conditioner runs in the Dry mode.

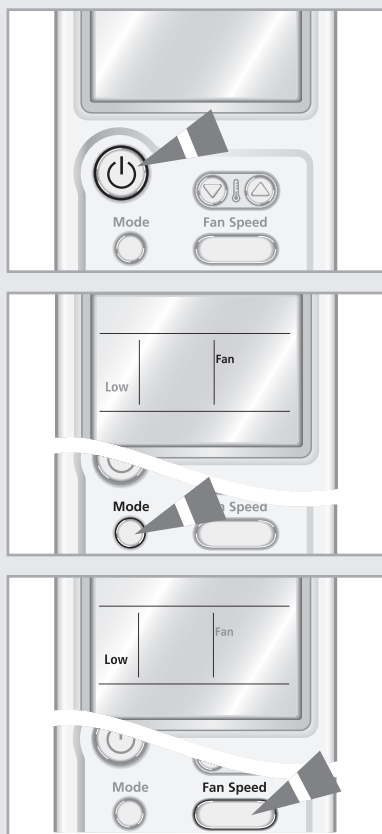
Note You can change modes at any time.

- 3 Press the  button to adjust the temperature until the required temperature is displayed.
 You can set the temperature between 18°C and 30°C.
Result:
 - ◆ Each time you press the  button:
 - The temperature adjusts by 1°C
 - The indoor unit beeps
 - ◆ The air conditioner starts dehumidifying and the fan speed adjusts automatically.

- 4 To control the airflow direction, refer to page 20.



Selecting Fan Mode



Select Fan mode if you want to ventilate your room. It helps to refresh the air in your room. You can adjust the fan speed in this mode.

- 1 Press the (On/Off) button.
Result:
 - ◆ The operation indicator on the indoor unit lights up.
 - ◆ The air conditioner starts up in the mode you selected last.
 - ◆ The indoor unit beeps.

- 2 Press the button on the remote control until **Fan** is displayed.
Result:
 - ◆ The indoor unit beeps each time you press the button.
 - ◆ The air conditioner runs in Fan mode.
 - ◆ The temperature is set automatically.

Note You can change modes at any time.

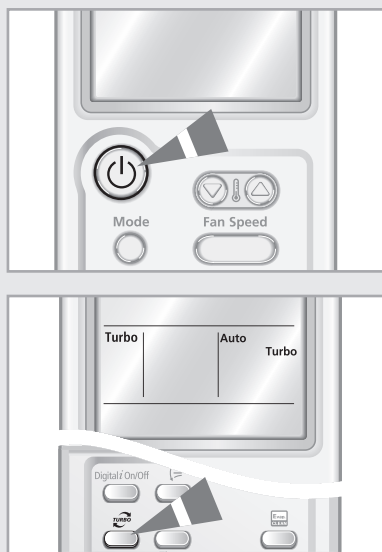
- 3 Press the button to adjust the temperature until the required setting is displayed.

Low → Medium → High

Result: Each time you press the button, the indoor unit beeps.

- 4 To control the airflow direction, refer to page 20.

Selecting the Turbo Function



You can select the Turbo Function if you want to cool or heat your room as quickly as possible. The Turbo function operates for 30 minutes with the maximum settings before returning automatically to the mode and temperature previously selected.

- 1 Press the (On/Off) button.
Result:
 - ◆ The operation indicator on the indoor unit lights up.
 - ◆ The air conditioner starts up in the mode you selected last.
 - ◆ The indoor unit beeps.
- 2 Press the button.
Result:
 - ◆ The temperature and fan settings are adjusted automatically.
 - ◆ The air conditioner cools or heats the room as quickly as possible.
 - ◆ After 30 minutes, the air conditioner is reset automatically to the previous setting.
 - ◆ You can select the Turbo function in Auto, Cool and Heat mode. If you select this function in Dry or Fan mode, the mode changes to Auto mode.

- 3 Press the button again to stop the Turbo Function before the end of the 30-minute period.

Result: The air conditioner is reset automatically to the previous setting.

- 4 To control the airflow direction, refer to page 20.

Selecting the Energy Saving Function

**You can select the Energy Saving Function to save energy when cooling.
The temperature range decreases in order to perform this function.**


- 1 Press the  (On/Off) button.

Result:


- ◆ The operation indicator on the indoor unit lights up.
- ◆ The air conditioner starts up in the mode you selected last.
- ◆ The indoor unit beeps.

- 2 Press the  button.

Result:

- ◆ The indoor unit beeps.
- ◆ The air conditioner runs in the Energy saving function.
- ◆ The outer airflow blade moves up and down.
- ◆ The airflow direction indicator is displayed automatically.
- ◆ To stop the Energy saving function, press the  again.

Note You can select the Energy saving function only in Cool mode.

- 3 Press the  button to adjust the temperature until the required temperature is displayed.
You can set the temperature between 26°C and 30°C.

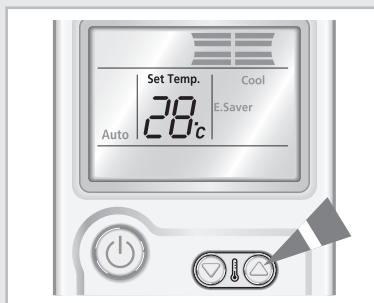
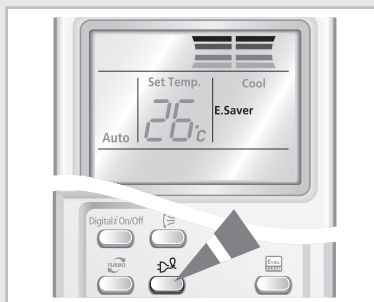
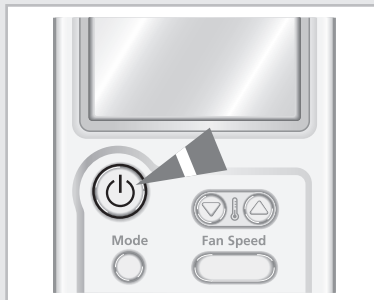
Note If you want to adjust temperature under 26°C, cancel the Energy saving function before adjusting the temperature.

- 4 Press the  to select the fan speed until the required setting is displayed.

Auto → Low → Medium → High

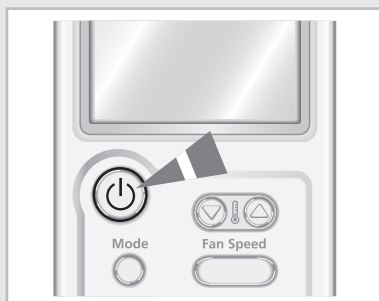
Result: Each time you press the  button, the indoor unit beeps.

- 5 To control the airflow direction, refer to page 20.



Selecting Good Morning Mode

Good Morning mode helps users to fall asleep well after going to bed whether being too hot to sleep or being awakened by coldness. The Good Morning mode can be selected only when the air conditioner is switched on or off in cool/heat mode.




- 1 Press the  (On/Off) button.


Result:

- ◆ The operation indicator on the indoor unit lights up.
- ◆ The air conditioner starts up in the mode you selected last.
- ◆ The indoor unit beeps.



- 2 Press the  button to select **cool** or **heat** mode.

Result:

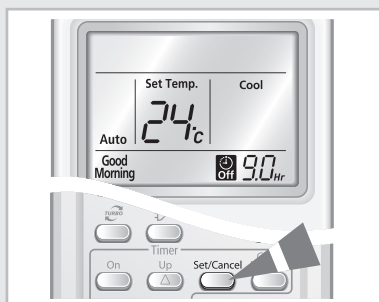
- ◆ The indoor unit beeps each time you press the  button.
- ◆ The air conditioner runs in cool or heat mode.





- 3 Press the  button.





Result:

- ◆ The timer indicator is displayed.
- ◆ The Off timer is blinking on the remote control.





- 4 To set the Good Morning Off timer, press the   buttons once or more times until the required Off time is displayed.


Result:


- ◆ The Good Morning mode will be automatically stopped in 8 hours if the operation time is not set.
- ◆ You can set the Off timer by pressing the   buttons to turn off the Good Morning mode automatically at the appointed time within a range of 30 minutes to 12 hours.
- ◆ Each time the   buttons are pressed, the time is increased by 30 minutes or 1 hour. Good Morning mode will be stopped at the appointed off time.

- 5 Press the  button.

Result: The remaining time is displayed.

Note In the case of selecting Good Morning mode or adjusting the extra time for Good Morning mode, you should press the  button within 10 seconds. If you do not press the  button within 10 seconds, Good Morning mode will be canceled automatically.

- 6 Press the  button to adjust the temperature until the desired temperature is displayed. You can set the temperature between 16°C and 30°C.

Result: Each time you press the  button;
 - The temperature adjusts by 1°C
 - The indoor unit beeps

In cool mode

Good Morning mode keeps the skin temperature at the best during the 3 stages such as, Falling Asleep Stage → Sound Sleep Stage → Wake Up Stage in order.

① Falling Asleep Stage :

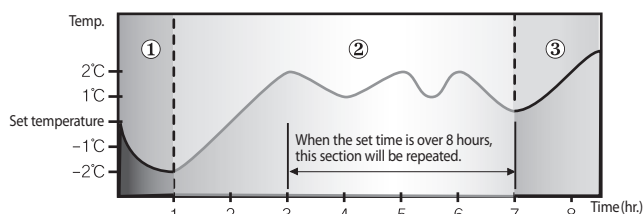
This stage supports the environment to quickly cool down. Together with comfortable intermittent air, you will be able to fall asleep quickly.

② Sound Sleep Stage :

This stage helps users to take deep sleep and keep the healthy skin by controlling wavy temperature control and insensible air stream.

③ Wake Up Stage :

This stage supports comfortable intermittent air to the room to raise human body temperature for refreshing wake up.

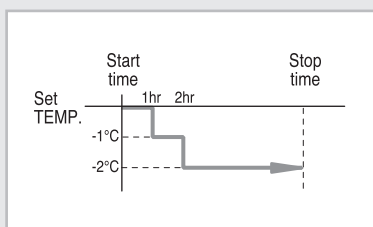


* The above temperature graph might be indicated differently from the temperature indicator of indoor unit depending on the user's location.

- ▶ The recommended temperature is set between 25°C and 27°C, and 26°C is the most ideal temperature for comfortable sleep.
- ▶ Airflow blades (left and right swing) and fan speed are controlled automatically as the above 3 stages in Good Morning mode.
- ▶ Set Off timer in Good Morning mode over 5 hours. You feel disturbed sleep if the Good Morning is set too short or long because the basic off timer is set for 8 hours.
- ▶ If the Good Morning mode is set less than 4 hours, the operation will be stopped after the set time. If the Good Morning mode is set over 5 hours, it will run as Wake Up stage for the last one hour before stop.

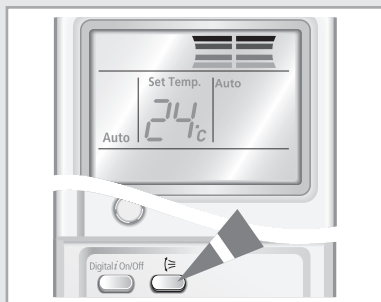
In heat mode

- ▶ The temperature decreases by 1°C every hour. After a decrease of 2°C, the temperature is maintained.
- ▶ You can set the airflow blades (left and right swing) and fan speed separately during Good Morning mode.






Adjusting the Airflow Direction

Adjust the airflow direction to circulate the air according to various needs. By adjusting the airflow direction, the efficiency of the air conditioner can be increased.



Adjusting the Airflow Direction Vertically

You can adjust the airflow direction vertically. The outer airflow blade moves up and down to increase the efficiency of the cooling or heating operation.

- 1 Press the  button until the required direction is set.
Result: The outer blade is adjusted vertically.
- 2 Press the  button again to move the blade up and down automatically during operation.
- 3 Press the  button again to stop the blade moving up and down.

Note

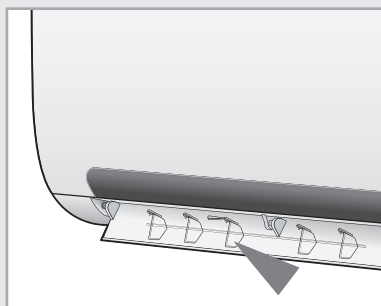
If you turn the air conditioner... Then the blade...

Off	is closed completely.
On	set to the default position.

Adjusting the Airflow Direction Horizontally


You can adjust airflow direction horizontally manually. The inner blades with small fins move the air in the desired direction.




- 1 Adjust the inner blades by moving them left or right.
 - ◆ Make sure do not touch the inner blades during operation. It may cause injury on your fingers.



Selecting the Auto Cleaning Function

You can select the Auto Cleaning Function if you want to sterilize the air conditioner or remove mold. You can set this function even when the air conditioner is turned off.


- 1 Press the  (On/Off) button.
Result:
 - ◆ The operation indicator on the indoor unit lights up.
 - ◆ The air conditioner starts up in the mode you selected last.
 - ◆ The indoor unit beeps.

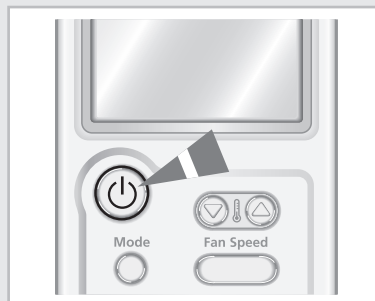
- 2 Press the  button.
Result:
 - ◆ The  indicator on the indoor unit lights up and the Auto Cleaning function is set.
 - ◆ When you turn the air conditioner off, it operates the Auto Cleaning function for 30 minutes. After 30 minutes, the air conditioner turns off.
 - ◆ If you press the  button when the air conditioner is turned off, the air conditioner operates the Auto Cleaning Function for 30 minutes.

When the air conditioner is turned

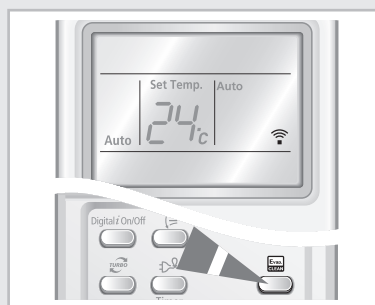
	Mode	Operating time
On	Auto, Cool, Dry	30 minutes
	Heat, Fan	15 minutes
Off		30 minutes

Note The Auto Cleaning indicator is displayed only on the indoor unit.

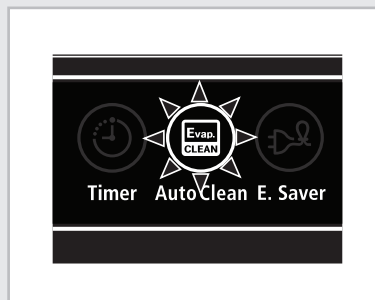
- 3 Press the  button again to stop the Auto cleaning function before the end of the 30-minute period.



Remote Control



Control Panel





Setting the On Timer

You can set the On Timer to turn on the air conditioner automatically at the appointed time within a range of 30 minutes to 24 hours.



- 1 Press the  button .




- 2 Press the  or  buttons until the desired time is displayed to set the On Timer. You can set the time between 0.5 hour and 24 hours.



- 3 Press the  button to complete the setting.

Result:

- ◆ The remaining time is displayed.
- ◆ The timer indicator stops blinking.
- ◆ The selected mode and the temperature on the display disappear after 10 seconds.
- ◆ The air conditioner turns on automatically at the appointed time and the On Timer setting disappears.

- 4 Press the  button until the desired mode is displayed at the top of the remote control to select the mode in advance.

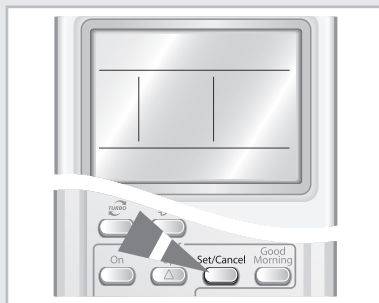
Result:

The air conditioner operates in the selected mode when it is turned on.

Note


- ◆ The most recently used function is set between On and Off Timer to turn on/off the air conditioner and Good Morning mode.

To Cancel the On Timer







- 1 Press the  button to cancel the On Timer.

Note





If you press the  button, both the On Timer and the Off Timer are canceled.

Setting the Off Timer

You can set the Off Timer to turn off the air conditioner automatically at the appointed time within a range of 30 minutes to 24 hours.



- 1 Press the  button .
 - 2 Press the  or  buttons until the desired time is displayed to set the Off Timer. You can set the time between 0.5 hour and 24 hours.
 - 3 Press the  button to complete the setting.
- Result:**
- ◆ The remaining time is displayed.
 - ◆ The timer indicator stops blinking.
 - ◆ The air conditioner turns off automatically at the appointed time and the Off Timer setting disappears.

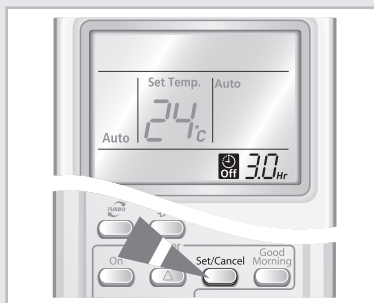
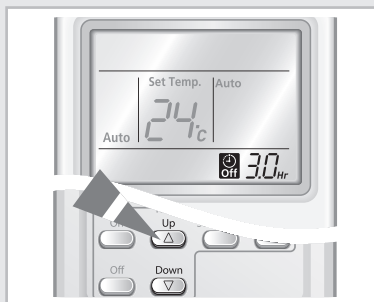
Example If you would like to turn the air conditioner on after 2 hours and to operate it for 2 hours during non-operation:

1. Press the  button.
2. Press the  or  buttons until '2.0 Hr' is displayed.
3. Press the  button.
4. Press the  button.
5. Press the  or  buttons until '4.0 Hr' is displayed.
6. Press the  button.

Note If you would like to turn on the air conditioner and then to turn off it automatically at the appointed time by using On/Off Timer during operation, you should set the On Timer longer than the Off Timer.

Caution Make sure that the air conditioner will not continue to run after On Timer setting is confirmed.

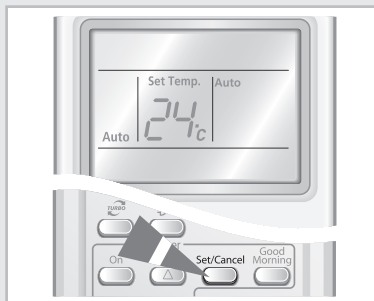
- Note**
- ◆ You can check or change the mode and/or the temperature by pressing the  button or the  button after setting the Off Timer.
 - ◆ The most recently used function is set between On and Off Timer to turn on/off the air conditioner and Good Morning mode.
 - ◆ If you would like to turn off the air conditioner and then to turn on it again automatically at the appointed time by using On/Off Timer during non-operation, you should set the Off Timer longer than the On Timer.



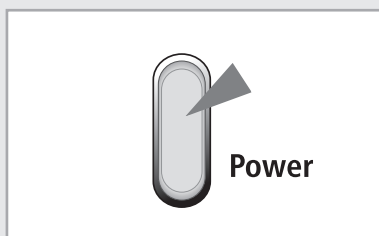
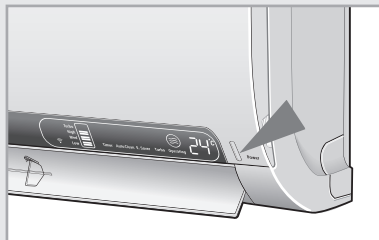
To Cancel the Off Timer

- 1 Press the  button to cancel the Off Timer.

Note If you press the  button, both the On Timer and the Off Timer are canceled.



Operating Your Air Conditioner Without the Remote Control



You can operate your air conditioner directly without the remote control.

- 1 To turn the air conditioner on, press the ON/OFF switch on the right side of the indoor unit.

Result:

- ◆ The Operation indicator on the indoor unit lights up.
- ◆ The indoor unit beeps.
- ◆ The air conditioner starts up in the appropriate mode for the room temperature. The air conditioner changes the Cool or Heat mode automatically depending on the current temperature during operation.

Room Temperature	Operating Mode
Lower than 24°C	Heating
Higher than 24°C	Cooling

- 2 To turn the air conditioner off, press the On/Off button again.

Note

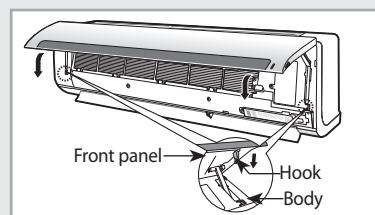
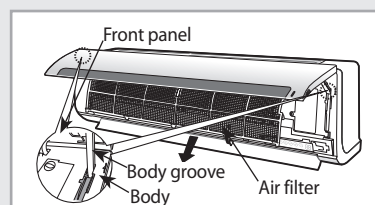
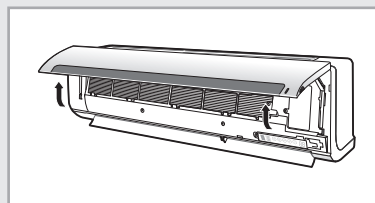
Even if you turned the air conditioner on with the On/Off button, you can control it with the remote control.

Cleaning Air Filter on Your Air Conditioner

For the best use of your air conditioner, you must clean it every 2 weeks regularly to remove the dust that accumulates on the air filter.

CAUTION Before cleaning your air conditioner, ensure that you have switched off the breaker used for the unit.

- 1 Open the front panel by pulling tabs on the lower right and left sides of the indoor unit.
- 2 Detach the front panel by pulling it forwards.
- 3 Hold the edge of the air filter under the front panel and pull to release.
- 4 Remove all dust on the air filter with a vacuum cleaner or brush.
- 5 When you finish, insert the top of the filter into the slot and fix it to 5 tabs or 3 tabs of the panel.
- 6 Clean the front panel with a damp cloth and mild detergent (do NOT use benzene, solvents or other chemicals).
- 7 Reassemble the air filter and the front panel.

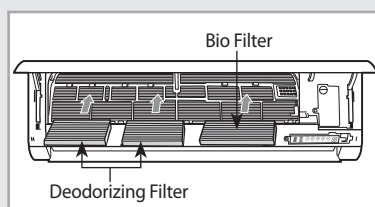


Note If you have not used the air conditioner for a while, select the Fan mode for 3 to 4 hours to dry the inside of the air conditioner.

Cleaning Deodorizing and Bio filter (Option)

There are Deodorizing and Bio filters inside your air conditioner. They remove odours and dust in your room. You should clean the filters every 3 months.

- 1 Open the upper front panel by pulling the lower right and left tabs of the panel.
- 2 Pull out the deodorizing and Bio filter.
- 3 Wash the filters with clean water, then dry them in the shade.
- 4 Insert the filters in their place.
- 5 Close the front panel.



Temperature and Humidity Ranges

If you check the following tables, you can use your air conditioner more efficiently.

If the air conditioner is used at... Then...

Heating capacity	The air conditioner may stop operating for the reason of protection.
Low temperatures	Water may leak and some malfunction may occur if the heat exchanger freezes.
Protection mechanism	Water may condense and drip from the surface of the indoor unit if you don't use the air conditioner for an extended period of time.

Operation	Outdoor Temperature	Indoor Temperature	Indoor Humidity
Heating	0°C to 24°C approx.	27°C or less	-
Cooling	21°C to 43°C approx.	16°C to 32°C approx.	80% or less
Dehumidifying	18°C to 43°C approx.	16°C to 32°C approx.	-

※ *If the outdoor temperature is as low as 0°C, the heating capacity drops up to 70~80% depending on the operating condition.*

If you use the air conditioner in temperatures over 32°C (indoor temperature), the cooling capacity may drop.




Operating Recommendations

When you use your air conditioner, it is recommended that you read the following:

Topic	Recommendation
Heating capacity	The heat pump inside the air conditioner absorbs heat from outside air and brings it indoors. If the temperature of the outside air drops, the air conditioner heats less. If the room is not warm enough, use an additional heating appliance.
Warm air circulation	The air conditioner circulates warm air to heat your room. It will take some time to warm the air in your room entirely after the air conditioner turns on. Therefore, turn the air conditioner on in advance.
Frost	When you select the Heat mode, frost may form in the outdoor unit due to low temperature and high humidity. If this happens: ◆ The heating operation is stopped. ◆ The air conditioner defrosts automatically for about 7 minutes. After about 7 minutes, the air conditioner starts operating again normally.
High indoor and outdoor temperatures	If both the indoor and outdoor temperatures are high when you select the Heat mode, the fan and the compressor of the outdoor unit may stop periodically. This is normal; wait until the air conditioner turns on again.
Power failure	If a power failure occurs when the air conditioner is operating, the air conditioner will turn off. When the power returns, the air conditioner will start up again automatically.
Protection mechanism	When the air conditioner is started immediately after being plugged in or stopped, the normal operation starts up after 3 minutes for the reason of protection.

Solving Common Problems

**Before contacting the after-sales service, perform the following simple checks.
They may save you the time and expense of an unnecessary call.**

Problem	Explanation/Solution
The air conditioner does not operate at all.	<ul style="list-style-type: none"> ◆ Check if power is on and operate the air conditioner again. ◆ Check if the circuit breaker is switched off. ◆ Check if Off Timer is set.
The temperature is not adjusted.	<ul style="list-style-type: none"> ◆ Check if you selected the Fan mode.
The air conditioner does not operate in the HEAT mode.	<ul style="list-style-type: none"> ◆ Check if the air conditioner is cooling only model. ◆ Check if the remote control is for cooling only model.
The cool(warm) air does not come out from the air conditioner.	<ul style="list-style-type: none"> ◆ Check if set temperature higher(lower) than current temperature. ◆ Check if you selected the Fan mode. Select the Cool, Heat, Auto or Dry mode. ◆ Check if the air filter is blocked by dirt. Clean the air filter regularly. ◆ Check if there is cover on the outdoor unit or any obstacle. Remove the cover or obstacle. ◆ Check if you installed the air conditioner under direct sunlight. ◆ The window or door may be opened. ◆ Check if you turn on the air conditioner just now. It takes about 3 minutes to cool or heat the room. ◆ Check if the drain pipe is too long.
The fan speed is not adjusted.	<ul style="list-style-type: none"> ◆ In Auto or Dry mode, the fan speed is selected automatically.
The remote control does not operate.	<ul style="list-style-type: none"> ◆ Check if the battery is discharged. Replace the battery. ◆ Check if the remote control sensor is blocked. ◆ Check if the air conditioner is placed near strong light.
The Timer is not set.	<ul style="list-style-type: none"> ◆ Check if you pressed the  button after selecting time.
Odor is permeated in the room during operation.	<ul style="list-style-type: none"> ◆ Check if you use the air conditioner in smoky area or there is a smell. Ventilate the room or select the Fan mode for 1~2 hours.
The indoor unit indicator flashes.	<ul style="list-style-type: none"> ◆ Press the  button to turn on the air conditioner again. Switch the circuit breaker off and switch on it again.
Strange sound is heard from the air conditioner.	<ul style="list-style-type: none"> ◆ The sound is heard when the refrigerant gas flow is changed depending on the use of the air conditioner. ◆ When you press the  button, noise may be heard that the air conditioner sense the airflow blade.
Water drops from the outdoor unit connection part.	<ul style="list-style-type: none"> ◆ Water may form due to the difference of the temperature.



Contact SAMSUNG WORLD WIDE

If you have any comments or questions regarding a Samsung product, contact the SAMSUNG customer care center.

Country	Customer Care Center ☎	Web Site
BELGIUM	02 201 2418	www.samsung.com/be
CZECH REPUBLIC	844 000 844	www.samsung.com/cz
DENMARK	38 322 887	www.samsung.com/dk
FINLAND	09 693 79 554	www.samsung.com/fi
FRANCE	08 25 08 65 65 (€0,15/min)	www.samsung.com/fr
GERMANY	01805 - 121213 (€0,14/min)	www.samsung.de
HUNGARY	06 40 985 985	www.samsung.com/hu
ITALIA	800 SAMSUNG(7267864)	www.samsung.com/it
LUXEMBURG	02 261 03 710	www.samsung.lu
NETHERLANDS	0900 20 200 88 (€0,10/min)	www.samsung.com/nl
NORWAY	231 627 22	www.samsung.com/no
POLAND	0 801 801 881	www.samsung.com/pl
PORTUGAL	80 8 200 128	www.samsung.com/pt
SLOVAKIA	0850 123 989	www.samsung.com/sk
SPAIN	902 10 11 30	www.samsung.com/es
SWEDEN	08 585 367 87	www.samsung.com/se
U.K	0870 SAMSUNG (7267846)	www.samsung.com/uk
Ireland	0818 717 100	www.samsung.com/uk



USER'S MANUAL

AQ09M*B Series
AQ12M*B Series
AQ18M*B Series
AQ24M*B Series

ENGLISH

ESPAÑOL

FRANÇAIS

ITALIANO

PORTUGUÊS

DEUTSCH

ΕΛΛΗΝΙΚΑ

Split - type Air Conditioner (Cooling and Heating)

