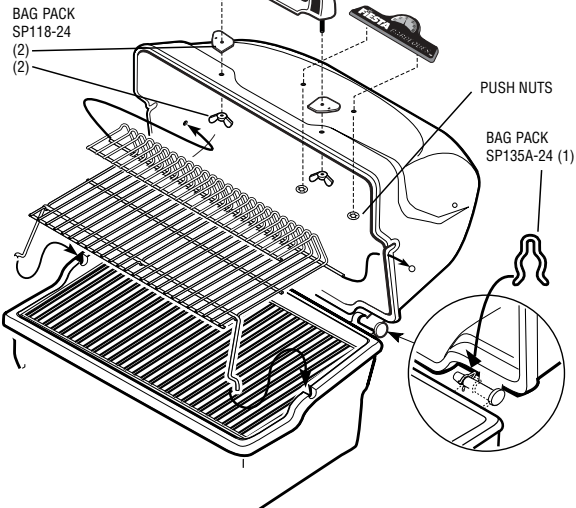
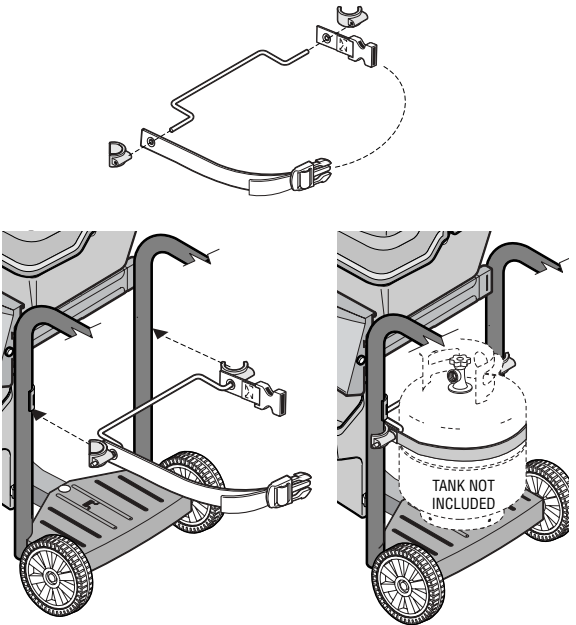


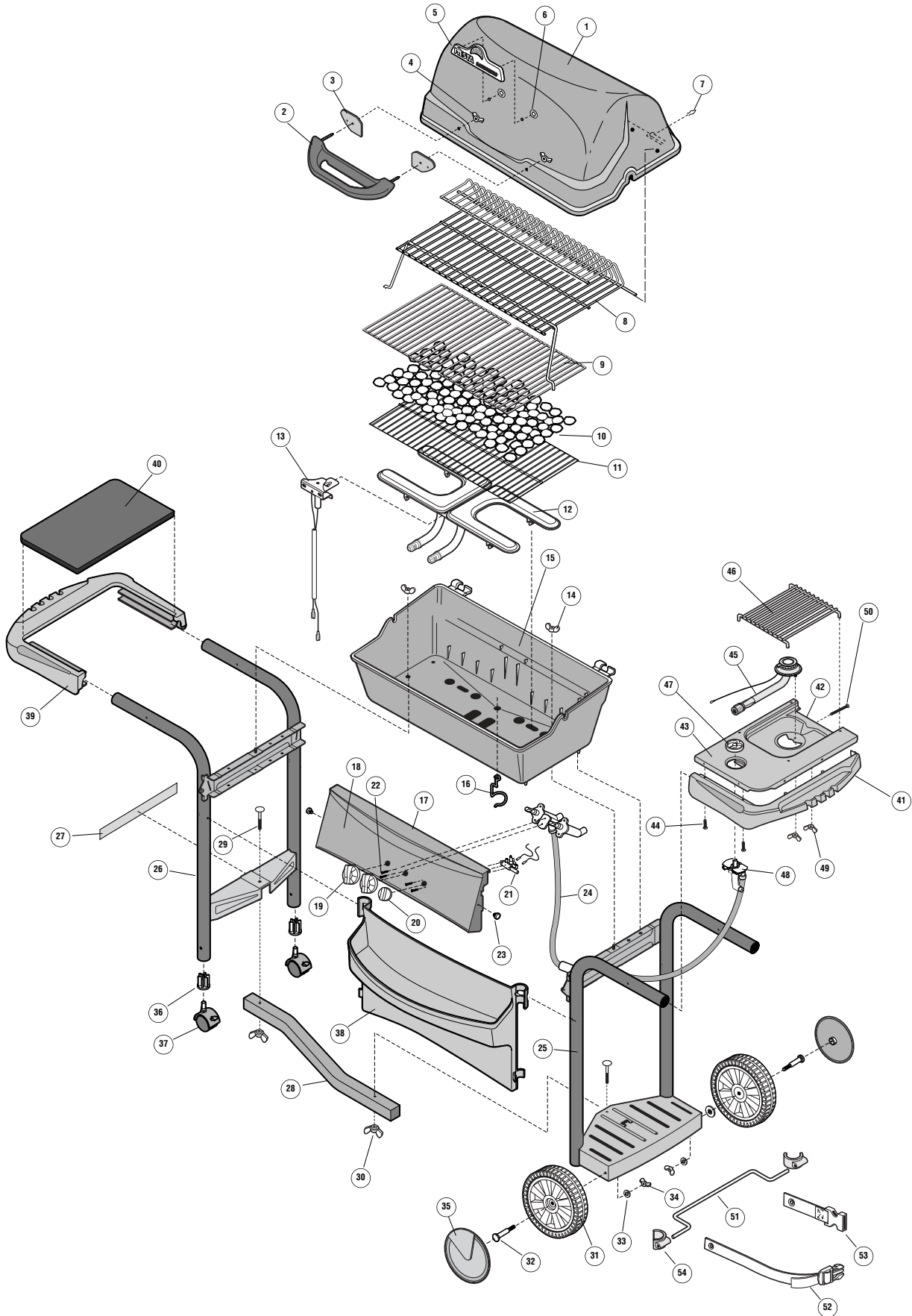
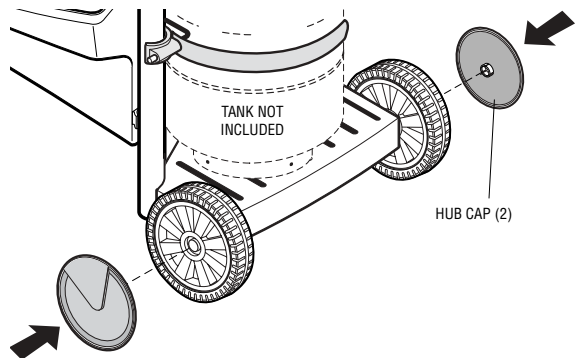
5_B



WARNING: Before proceeding with the following steps, ensure you have read: L.P. Gas Cylinder • Hose and Regulator Sections of the **USE AND CARE INSTRUCTIONS**



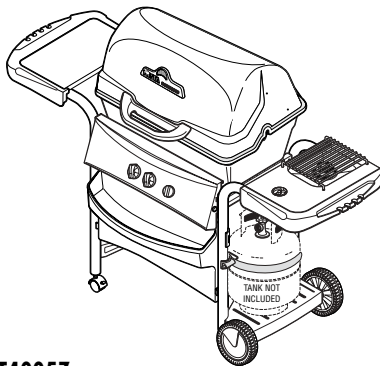
IMPORTANT: Ensure hose assembly does not contact the casting, or any other parts which will get hot.



EXPLODED LAYOUT

DESCRIPTION	ITEM #	PART #	QTY
DYNASTY COVER	1	SM64-1B	1
HANDLE	2	SP43-19	1
GASKET (BAG PACK SP118-24)	3	SP7-14	2
#10-24 WING NUT (BAG PACK SP118-24)	4	SP24-16	2
TEMPERATURE LOGO GAUGE	5	SP24-30	1
PUSH NUT LOGO GAUGE	6	SP33-16	2
COVER CLIP (BAG PACK SP135A-24)	7	SP4-15	1
CANTILEVER WARMING RACK	8	SP97-3	1
PORCELAIN COOK GRILLS	9	SP5-3	2
LAVA ROCK	10	SP2-28	1
LAVA GRILL	11	SP109-3	1
"H" BURNER STAINLESS STEEL	12	SM207-12	1
- COLLECTOR BOX - ELECTRODE - GROUND WIRE	13	SP40-20	1
CASTING LOCK (BAG PACK SP135A-24)	14	SP25-16	2
BASE	15	SM36-2B	1
GREASE CUP CLIP	16	SP6-15	1
CONSOLE	17	SM36-31B	1
CONSOLE DECAL	18		1
KNOB	19	SP7-7	2
ROTARY IGNITOR KNOB	20	SP5A-7	1
ROTARY IGNITOR	21	SP33-20	1
#8-32 X 3/8" TYPE C SCREW	22	SP2-21	4
CONSOLE LOCK (BAG PACK SP135A-24)	23	SP47-18	2
VALVE HOSE	24	SM353-4	1
RIGHT HAND LADDER ASSEMBLY	25	SM375-42B	1
LEFT HAND LADDER ASSEMBLY	26	SM372-42B	1
SERIAL RATING LABEL	27		1
BEAM	28	SM49-8B	1
STEP BOLT (BAG PACK SP135A-24)	29	SP49-18	2
BEAM TAPER WING NUT (BAG PACK SP135A-24)	30	SP26-16	2
WHEEL	31	SP17-22	2
WHEEL BOLT (BAG PACK SP135A-24)	32	SP65-18	2
WASHER (BAG PACK SP135A-24)	33	SP2-17	2
1/4-20 WING NUT (BAG PACK SP135A-24)	34	SP2-16	2
HUB CAP	35	SP21-33P	2
CASTER PLUG	36	SP5-34B	2
CASTOR	37	SP8A-22	2
FRONT PANEL	38	SP28A-9P	1
RESIN TRIM	39	SP27-9P	1
MDF SHELF INSERT	40	SP39-9B	1
SIDE BURNER FACTORY ASSEMBLY			1
SIDE BURNER TRIM	41	SP47-9P	1
SIDE BURNER BASE	42	SM41A-2B	1
SIDE BURNER DECAL	43		1
#8-18 X 1/2" SCREW	44	SP37-21	2
SIDE BURNER	45	SP52-12	1
SIDE BURNER GRILL	46	SP138-3	1
SIDE BURNER KNOB	47	SP9-7	1
VALVE BRACKET	48	SP22-6	1
#10-24 WING NUT (BAG PACK SP135A-24)	49	SP18-16	2
#10-24 X 1 3/4" SCREW (BAG PACK SP135A-24)	50	SP57-18	1
TANK WIRE	51	SP110-3	1
MALE TANK STRAP	52	SP23-15	1
FEMALE TANK STRAP	53	SP24-15	1
TANK CLIP	54	SP31-15	2

FIESTA
Express
NO TOOLS REQUIRED!



MODEL XT40057

THIS GRILL IS FOR OUTDOOR USE ONLY

CAUTION:
Read and follow all Safety Statements, Assembly Instructions, and Use and Care Manual Directions before attempting to assemble and cook.

Installer / assembler:
Leave these instructions with consumer.
To Consumer:
Keep this manual for future reference.

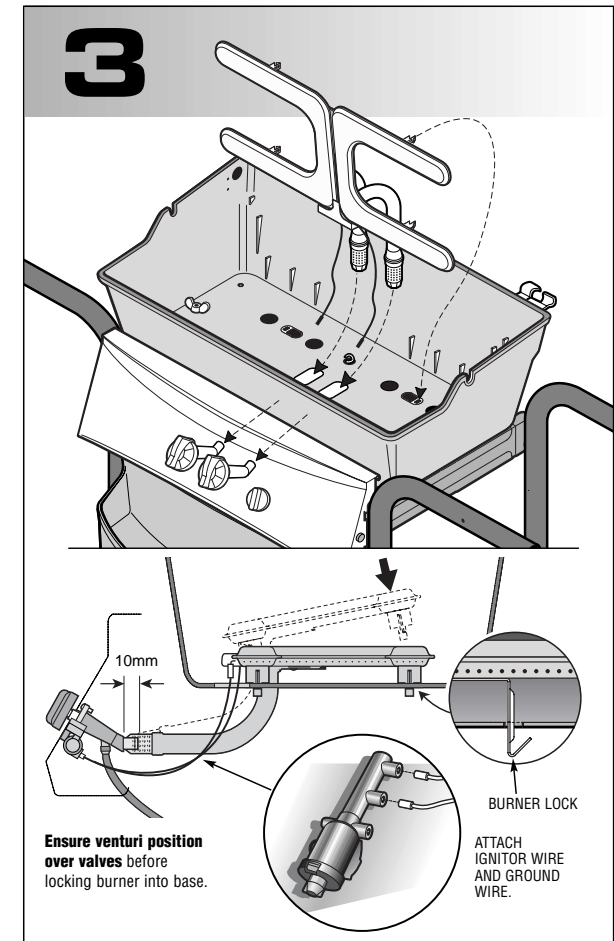
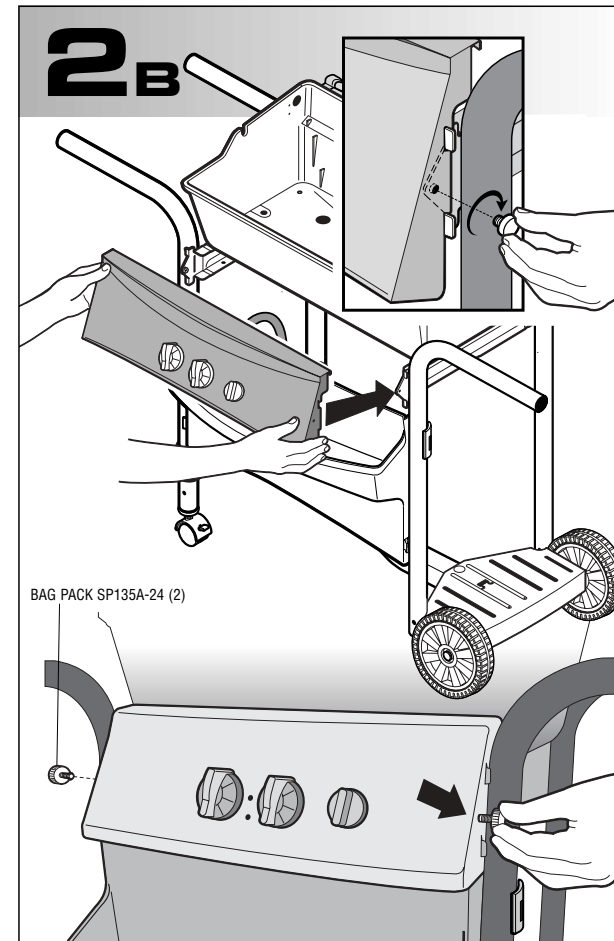
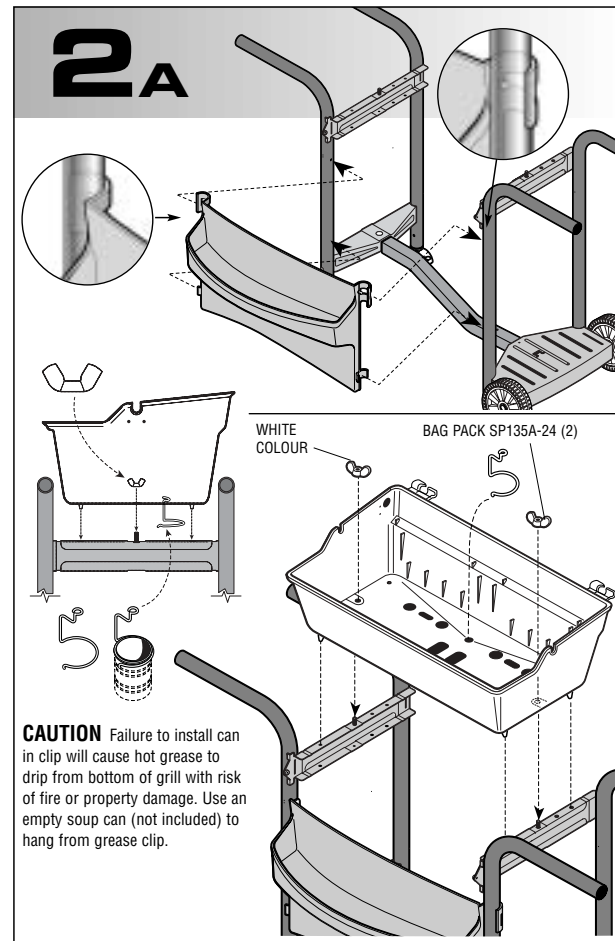
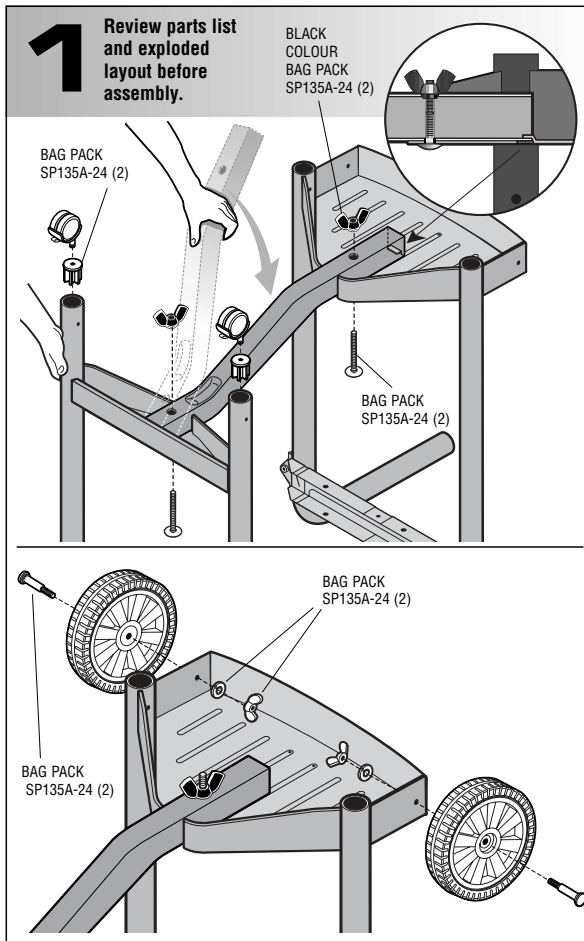
WARNING

- Failure to follow all manufacturer's instructions could result in serious personal injury and/or property damage.

CAUTION

- Some parts may contain sharp edges -especially as noted in manual! Wear protective gloves if necessary.

SP911-37



SEE USE & CARE MANUAL FOR IMPORTANT SAFETY INSTRUCTIONS BEFORE USING.

