



## Be sure to keep for safety !

■ Read this safety instructions thoroughly and carefully before using. Please keep this user guide at hand for future reference.



WARNING

Indicates the possibility of danger of death or serious injury



CAUTION

Indicates the possibility of risk of personal injury or material damage

### Other Signs



DO NOT remove or disassemble!



NO., DO NOT...



Be sure to unplug from receptacle(outlet/mains)!



Be sure to keep and follow!



**Notice** If the supply cord is damaged, it must be replaced by the manufacturer or its service agent or a simmiliary qualified person in order to avoid a hazard.

### WARNING



Never let power cord be crushed by refrigerator itself or other (heavy) objects. Never bend power cord excessively.

- If cord is damaged or peeled, it can be a cause of fire and electric shock.



Do not plug several appliances into same wall outlet (receptacle).

- It can be a cause of overheating and/or fire. Use an exclusive grounding receptacle for the refrigerator.



Never hold the power cord or plug with wet hands.

- There is a risk of electric shock.



Never use damaged power cord or plug, loose receptacle.

- There is a risk of fire, electric shock or serious injury.





Be sure to ground. Check if your wall outlet is grounding (earthed) one.

- There is a risk of electric shock hazards.



Never unplug by pulling only the power cord wire. Always grip the plug firmly.

WARNING	
 <p><b>Let the cord from the plug outlet be directed Downwards.</b></p> <ul style="list-style-type: none"> <li>• If it directed up, the cord near the plug is bent and can be damaged, which can cause electric shock or fire.</li> </ul>	 <p><b>Do not install refrigerator on a wet floor or in a place with much humidity moisture.</b></p> <ul style="list-style-type: none"> <li>• Electric insulation gets weakened, resulting in a risk of electric shock hazards.</li> </ul>
 <p><b>Never let the power cord touch or pass over heating appliances.</b></p> <ul style="list-style-type: none"> <li>• Power cord can be damaged, resulting in a risk of electric shock hazards.</li> </ul>	 <p><b>Check if plug is loose from the wall outlet.</b></p> <ul style="list-style-type: none"> <li>• Electric insulation gets weakened, resulting in a risk of electric shock hazards.</li> </ul>
 <p><b>Never pour or spray water into the refrigerator (both interior and exterior).</b></p> <ul style="list-style-type: none"> <li>• Electric insulation gets weakened, resulting in a risk of electric shock hazards.</li> </ul>	 <p><b>Do not place containers with water or liquid on top of refrigerator.</b></p> <ul style="list-style-type: none"> <li>• Water can be poured into the refrigerator and can cause electric shock hazards or damage.</li> </ul>
 <p><b>Do not let children hang on the refrigerator doors.</b></p> <ul style="list-style-type: none"> <li>• Refrigerator can fall and do harm to them.</li> </ul>	 <p><b>Do not move or remove compartment shelves/pockets while foods and containers are on them.</b></p> <ul style="list-style-type: none"> <li>• Hard container (of glass, metal etc.) can fall to hurt you and can break shelf glass and interior parts.</li> </ul>
 <p><b>Never repair or disassemble or amend refrigerator on your own</b></p> <ul style="list-style-type: none"> <li>• There is a risk of personal injury or damage to the refrigerator. It is recommended that any service be carried out by a qualified person.</li> </ul>	 <p><b>Never store any flammable gas or liquid in the refrigerator.</b></p>
 <p><b>Never use flammable gas, benzene, thinner, gasoline, spray etc. near the refrigerator.</b></p> <ul style="list-style-type: none"> <li>• There is a risk of fire, explosion and personal injury or damage.</li> </ul>	 <p><b>If a gas leak found near the refrigerator or in the kitchen, ventilate it immediately without touching power plug or refrigerator.</b></p>

WARNING	
 <p><b>Do not store medicine, academic research samples which require strict temperature control in the refrigerator.</b></p>	 <p><b>Never insert fingers or hands into the bottom of refrigerator, especially into the bottom back.</b></p> <ul style="list-style-type: none"> <li>• You can be hurt by sharp metal edges or can receive an electric shock.</li> </ul>
 <p><b>Do not change fuse or light bulb on your own. Call the service agent to change them.</b></p>	 <p><b>When you find the power cord damaged or cut, call the service agent immediately.</b></p>
 <p><b>When you get rid of your old refrigerator, be sure to remove the door packings first.</b></p> <ul style="list-style-type: none"> <li>• Children can be entrapped and suffocated in an abandoned refrigerator. Leave it "just a few days!" is very dangerous.</li> </ul>	
CAUTION	
 <p><b>Be sure to unplug when the refrigerator is not used for a long time.</b></p>	 <p><b>Never touch foods and containers especially of metal with wet hands in the freezer compartment.</b></p> <ul style="list-style-type: none"> <li>• You can be hurt by chilblains or cold burn.</li> </ul>
 <p><b>Never eat any decayed or deteriorated food at all.</b></p> <ul style="list-style-type: none"> <li>• Foods stored too long in the refrigerator can be decayed or deteriorated .</li> </ul>	 <p><b>Never place bottles and containers of glass in the freezer compartment.</b></p> <ul style="list-style-type: none"> <li>• Glass containers and bottles can be broken so can hurt you.</li> </ul>
 <p><b>When moving the refrigerator (layed or tilted), more than 2 persons are required to hold it. ( One to hold top back handles, the other, bottom holder. ) If other parts gripped, it is very dangerous and likely to slip.</b></p>	 <p><b>Be sure to turn up the wheel first before moving the refrigerator.</b></p> <ul style="list-style-type: none"> <li>• The wheels can damage or scratch the floor. If you move it a long distance, never forget to fasten the interior parts tightly with tapes.</li> <li>• The parts can shake to break each other.</li> </ul>

## Installation Guide

⚠ Read these safety instructions carefully before use and follow precautions for your safety.

### ⚠ Precautions in installation and power connection

- To prevent fire, electric shock or leakage
  - ❑ Never install the refrigerator on a wet, watery floor or where water can easily gather.
- ❑ Check the following before power connection.
  - Connect power plug only to a grounding wall receptacle (an earthed mains).
  - Do not plug refrigerator power together with other appliances to a same receptacle(socket).
- ❑ Do not use an adapter plug or an extension cord.
- ❑ Do not let power cord be crushed down by other (heavy) objects .
  - If you hear strange noise or strong chemical odor or find smog etc. from the refrigerator after power plugin, pull out the plug immediately and call the service.
  - Wait about 5 minutes before you plugin again in order to prevent any damage to the compressor and electrical devices of refrigerator.
  - Wait 2-3 hours until the inside gets cold enough after first power plugin, then store foods in. (There can be some peculiar smell of plastic parts at initial operation of refrigerator after plugin. The smell fades away as refrigerator works and doors are opened and closed.)

### ⚠ Precautions in use

- To prevent personal injury, fire, electric shock etc. read this user guide carefully before use and keep it at hand for any reference.

### ■ Accessories



Egg case

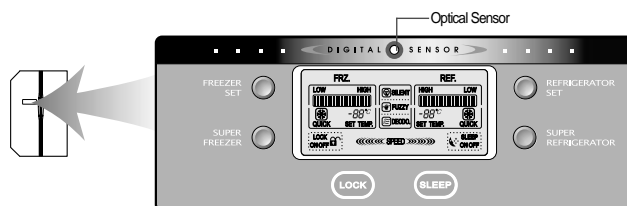


Egg cradle



User guide

## Control Panel



Optical Sensor in the top center of the panel senses the amount of light surrounding the refrigerator. When it decides that it is dark (night), Silence Mode starts. Refrigerator works on in minimum operation condition, so it makes little or less working noise. [Notice] Do not let the Optical Sensor be covered by memo sheet (Post-it) etc.



It shows that the digital control system is working the refrigerator. (The icon is always on while the refrigerator is working.)



As long as the refrigerator is working deodorization is always on.



Children may push any button on the panel for fun, resulting in disorder of temperature and function of refrigerator. Press this button to lock out this case and to keep temperature and function setting.



If you fill the refrigerator with much foods or in case of frequent door openings, Speed Mode starts automatically to maintain optimal condition of temperature.



If you need total silence from the refrigerator just push sleep button. This mode works for maximum 12 hours and then it returns to the previously set mode. When you want to stop the mode, just push the button again and it also returns to the previously set mode



- Interior lights of refrigerator turn off when the doors are open for more than 10 minutes.
- In case either freezer or refrigerator door is open for more than a minute, door alarm rings for 5 minutes with 1 minute interval.

### LCD Background Light

The LCD light turns on in the following case to help you control the panel easily ;

- When the refrigerator is plugged in
- When you push a button (The backlight light turns on first, then button mode is activated.)
- When you open the door

※ If you push a button when the backlight is off, only the backlight turns on and it does not affect any other button mode.

The LCD light turns off in the following case to save energy consumption ;

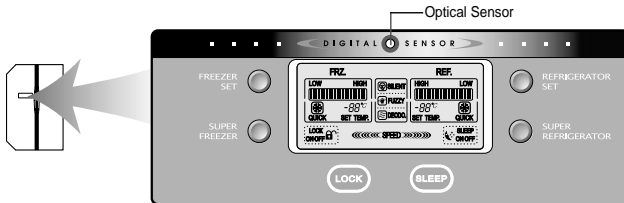
- 1 minute after power plug in
- 10 seconds after the door is closed
- No other button is pushed for more than 1 minute after button selection

※ When you look at LCD display from side or down, not from front, the display (letters, icons and signs) can look faded or dim.



## Temperature Control

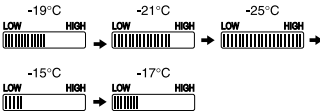
※ When this refrigerator is first plugged in, the temperature mode is set to [Middle].



### Freezer Compartment

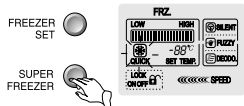
Push the FREEZER SET. button and the setting temperature changes as the figure shows.

>>> Sequential Temperature Change <<<



### Faster Freezing...

When you want faster freezing, push the SUPER FREEZER. button, then "QUICK" icon turns on and the mode starts. Just push the button once again when you want to stop the mode.

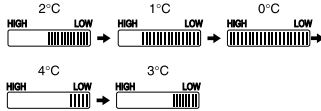


- Note**
- The inside temperature can vary according to door openings, amount of foods, surrounding temperature etc.
  - The mode ends automatically and it returns to the previously set mode.
- For example) The refrigerator is working on [LOW Mode]. → [SUPER FREEZER.] starts and ends. → Returns to [LOW Mode] again.

### Refrigerator Compartment

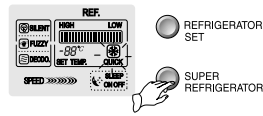
Push the REFRIGERATOR SET. button and the setting temperature changes as the figure shows.

>>> Sequential Temperature Change <<<



### Faster Cooling or Refrigeration

When you want faster refrigerating, push the SUPER REFRIGERATOR. button, then "QUICK" icon turns on and the mode starts. Just push the button once again when you want to stop the mode.



- Note**
- The inside temperature can vary according to door openings, amount of foods, surrounding temperature etc.
  - The mode ends automatically and it returns to the previously set mode.
- For example) The refrigerator is working on [LOW Mode]. → [SUPER REFRIGERATOR.] starts and ends. → Returns to [LOW Mode] again.

**Notice** Foods in the refrigerator can be frozen if the ambient temperature of refrigerator is below 5°C.

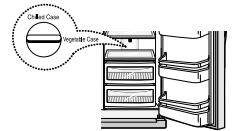
6



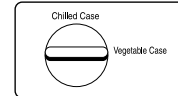
## How to use interior parts

### Vegetable Case & Chilled Case

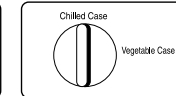
- The first case or drawer of the refrigerator compartment can be used either as a vegetable case or as a chilled case for your convenience. The temperature in the chilled case is somewhat lower than the vegetable one, so you can keep food more fresh.



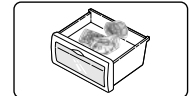
■ For Vegetable Case



■ For Chilled Case



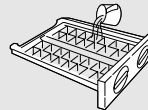
■ Be sure to check the handle bar direction



- If you store vegetables and fruits in the chilled room mode, they can be frozen.
- If you store fish in the chilled room mode for a long time, it can deteriorate. Store it in the freezer compartment.
- Do not place foods close to the cold air spout, for it can weaken cold air circulation.

### Ice Cubes Maker

- 1 Pull out ice cubes maker and fill with pure water.



- Do not pour water too much, for the ice cubes made get sticky and do not to separate easily.
- Keep in mind not to go beyond the water line with an arrow mark when filling with water.

- 2 When ice cubes are ready, turn the handle clockwise to separate.

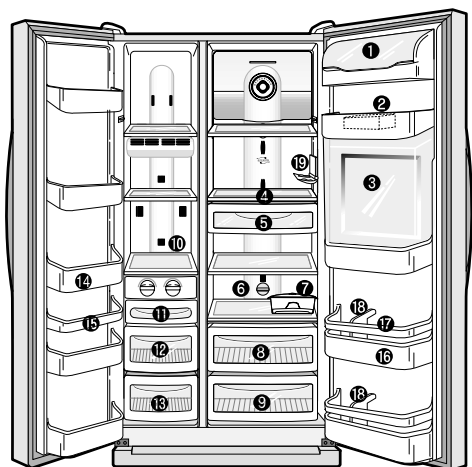


- If ice cubes are not to fall easily, turn it to the end several times.
- Do not turn the separation handle if the ice cubes are not ready, for they gets sticky on the ice tray and case.

- 3 Do not use ice cubes case to make big ice block, for it can be broken. Pull out the case, clean and dry it if not used (for a long time).

7

## ■ Interior Parts



### 1 Dairy Pocket

For storing dairy products such as butter and cheese



### 2 Small Pocket

For storing small packed foods

### 3 Refreshment Pocket

(Refreshment Pocket Models Only)  
For frequently used cans, drink water, beverages

### 4 Refrigerator Shelf (tempered glass)

For storing common foods



### 5 Chilled Case

For storing foods temporarily that is ready to cook (meat, fish...)



### 6 Switch Handle for Chilled Room or Vegetable

## Notice

- Do not touch or hold with wet hands foods (foods container) in the freezer compartment.  
⇒ There is a risk of chilblains (cold burn)
- Do not store medicine, academic research samples etc. in the refrigerator.
- Do not store vegetables in the chilled room, for they can be frozen.

## Note

- Egg case can be placed on a refrigerator shelf as you like.

### 7 Movable Egg Case

Place the case for your convenience.  
(Do not use the case for storing ice cubes nor place in the freezer compartment.)

### 8 Vegetable Case & Chilled Case

Refer to page 7.

### 9 Fruit Case

For storing fruits



### 10 Freezer Shelf (tempered glass)

For storing frozen foods such as meat, fish, ice-cream...



### 11 Ice cubes maker & Ice cubes case

when the ice cubes are ready, turn the handle clockwise to separate.  
⇒ page 7.



### 12 Drying Case of Freezer

for storing dried foods for so long (dried squid, dried anchovy etc.)



### 13 Meat case of Freezer

for storing meat, fish, chicken with foil cover or vinyl wrap



### 14 Freezer Pocket

for storing frozen foods  
(Do not store ice cream or long stored foods on the top freezer pocket.)

### 15 Freezer Small Pocket

for storing small frozen foods

### 16 Refrigerator Pocket

for storing refrigerating foods, milk, juice, beer bottle etc.

### 17 Refrigerator Pocket Guide

to prevent (tall) foods on the pocket from falling

### 18 Bottle Guide

to retain tall bottles from sliding and falling

### 19 Wine Bottle Support

## Food Storage Tips



Wash foods before storing.



Divide and separate foods into smaller pieces as possible.



Place watery foods or foods with much moisture in front of shelves (close to door side).  
● they are placed close to the cold air spout, they can be frozen.



Warm or hot foods should be cooled down enough before storing to reduce power consumption and to enhance refrigeration performance.



Be careful in storing such tropical fruit as bananas, pineapples, tomatoes, for they can easily be deteriorated in lower temperature.



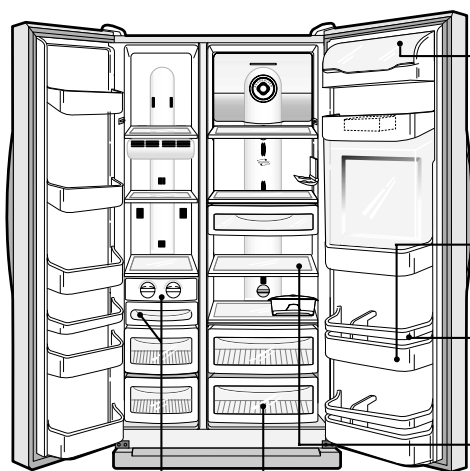
Keep enough space between the foods as possible. If too tight or too close, cold air circulation is hindered, resulting in poor refrigeration.



Never forget to cover or wrap foods to prevent odor of foods.

## Care & Cleaning

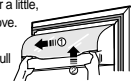
Be sure to  
unplug first !



### Pockets guide

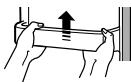
#### Dairy Pocket

- Dairy Pocket Cover ; Open the cover a little, hold both ends and push left to remove.
- Dairy Pocket ; Hold both ends and pull upward to remove.



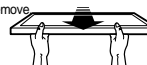
#### Freezer & Refrigerator Pockets

- Hold both end and pull up.
- 4th and 5th pocket
- ① Removing ; Remove Pocket Guide first, then Pocket.
- ② Replacing ; Replace Pocket first, then Pocket Guide.



#### Freezer & Refrigerator Shelves

- Open the doors fully, then pull the shelves forward to remove.



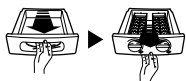
#### Vegetable Case & Fruit Case

- Pull forward and lift up a little to remove.



#### Ice cubes maker & Ice cubes case

- Refer to page 7.



**Note** Never use any other electrical appliances together in the inside of refrigerator for fear of electric shock or fire.

### Notice

- Clean the interior at least once a month for sanitary food storage, deodorization.
- Be sure to unplug before cleaning or when not using for so long time.
- In case a power failure is predicted, store no more foods, make ice block and place it on the top refrigerator shelf. It can keep the inside cool for about 2-3 hours. (Do not open the doors frequently ; minimize door openings.)

10

## How to Clean

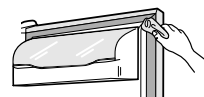
### Interior Parts

- Use cloth with water and mild(neutral) detergent to clean.



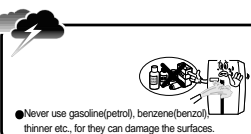
### Door Packing

- Use cloth with mild(neutral) detergent.



### Back (Machine Room)

- Remove dust on grill with a vacuum cleaner at least once a year.

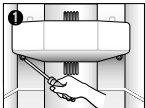


11

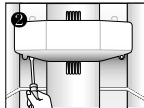
## How To change Interior Light Bulb

The lamp shall be replaced only by a service agent or similarly qualified person.

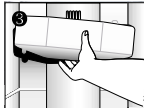
### Change of Freezer Lights



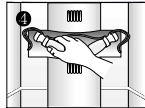
Remove screw caps bottom of light cover with a tiny tip screw driver.



Remove 2 screws of light cover.



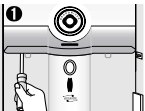
Hold the bottom of light cover and pull forward to remove.



Change the light bulb.  
※Follow the reverse order of disassembling after changing the light.

### Change of Refrigerator Lights

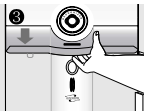
#### Refrigerator Top Lights



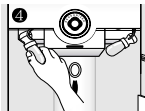
Remove screw caps bottom of light cover with a small tip screw driver.



Remove screws of light cover.

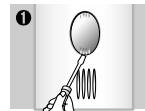


Hold the bottom of cover and pull forward to remove.



Change the light bulbs.  
※Follow the reverse order of disassembling when assembling back.

#### Refrigerator Bottom Lights



Snap out the bottom hook of light cover with a flat tip screw driver.



Hold down the light cover to pull out.



Change the light bulb.  
※Follow the reverse order after changing the light.





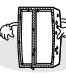



## Before You Call for Service...

Please checkup the following troubleshooting tips before you call for service !

Problem	Checkup Point	Action
It never gets cold inside. Freezing & refrigerating is not so good.	<ol style="list-style-type: none"> <li>Is the refrigerator unplugged ?</li> <li>Is the temperature set to [Low Mode] ?</li> <li>Is the refrigerator under direct sunlight or is any heat appliance placed near it ?</li> <li>Is the space between refrigerator back and the wall too close ?</li> </ol>	<ol style="list-style-type: none"> <li>Plug the refrigerator.</li> <li>Set the temperature mode to Middle or High.</li> <li>Move to a place where there is no direct sunlight, no heat appliances around.</li> <li>Keep sufficient space (more than 10cm) between refrigerator back and the wall.</li> </ol>
Foods in the refrigerator get frozen.	<ol style="list-style-type: none"> <li>Is temperature set to [Strong] ?</li> <li>Is surround temperature too low ?</li> <li>Is foods with much moisture stored close to the cold air spout ?</li> </ol>	<ol style="list-style-type: none"> <li>Set the temperature to [Middle] or [Low].</li> <li>Foods can be frozen if ambient temperature is below 5 °C. Move to a place where the temperature is over 5 °C.</li> <li>Place foods with moisture on the shelves close to the doors.</li> </ol>
Strange sound from the refrigerator	<ol style="list-style-type: none"> <li>Is floor beneath the refrigerator uneven ?</li> <li>Is the space between refrigerator back and the wall too close ?</li> <li>Does other stuff touch the refrigerator ?</li> </ol>	<ol style="list-style-type: none"> <li>Move the refrigerator to a level and even floor.</li> <li>Keep sufficient space.</li> <li>Remove any object a way which touches the refrigerator.</li> </ol>
Odor or disgusting smell from the inside	<ol style="list-style-type: none"> <li>Is food stored uncovered or unwrapped ?</li> <li>Are the shelves and pockets stained with foods stuff ?</li> <li>Is food stored too long ?</li> </ol>	<ol style="list-style-type: none"> <li>Be sure to cover and wrap the foods.</li> <li>Clean them regularly. Once smell gets soaked to those parts, it is not easy to remove.</li> <li>Do not store foods for so long. Refrigerator is neither a perfect nor a permanent foods keeper.</li> </ol>

## Something strange ? Don't worry. Here is the answer.

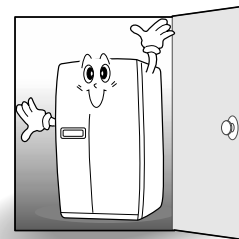
Case	Explanation
<b>Heat</b> Front and side of refrigerator feels warm or hot. 	● Pipes (refrigerant vessel) are placed beneath the surface to prevent moisture forming on it.
<b>Door is sticky</b> Doors are not to open easily. 	● When you close the door and then open again immediately, the door is not easy to open. Warm air rushes into the inside to make the pressure difference. In this case wait for a minute, then it will open easily.
<b>Strange Sound</b> It sounds like water is flowing from the refrigerator. 	● When the compressor starts to run or stops, refrigerant which makes the inside cold flowing in the pipes can make such a sound. ● Defrosted water can also make such a sound. (This refrigerator adopts an automatic defrosting system.)
Something cracking or click sound. 	● Inside parts shrink and/or expand due to temperature change —When the inside gets cold or when the door is open —such sound can be made.
Humming or buzz sound.	● Compressor or fans for cold air circulation can make such working sound. (If the refrigerator is not level, the sound can be louder.)
<b>Frost &amp; Dew</b> Dew or frost on the wall and/or food container surface in the freezer and refrigerator compartment. 	Frost and/or dew can be made in the following cases : ● High temperature and/or high humidity around the refrigerator ● When doors are open too long ● Foods with much moisture are stored uncovered or unwrapped ※ You can see the same appearance when cold water is poured in a glass cup and dew is forming on the surface of it.
Dew on the interior lights cover 	● The light bulb radiates heat while it is on, so when doors are open too long, dew can form on the light cover due to temperature difference.
Dew on the cabinet surface	● In case it is highly humid around the refrigerator, moisture in the air sticks to the surface to form the dew.

14

## Installation Preparation

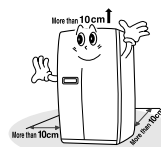
● Check if the refrigerator can pass a doorway or enter a door first. ● .....

MODEL NO.	Dimensions( including Door Handles)
FRS-3031	(Width*Depth*Height) 928mm * 816mm * 1808mm

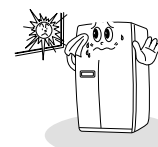


● Find a suitable place to install. ● .....

※ Sufficient space from refrigerator back to the wall for free air ventilation



※ Avoid direct sunlight.



● Once the installation place is ready follow the installation instructions.  
 If surround temperature of refrigerator is low (below 5℃), foods can be frozen or the refrigerator can work in abnormal way.

15



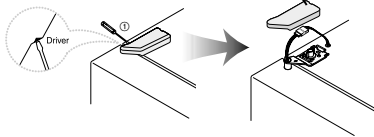


If the refrigerator can not enter the door, follow these steps.

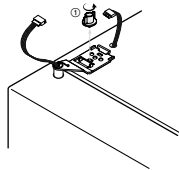
### Removing Freezer Door

\*Remove front bottom cover first, if it is attached.

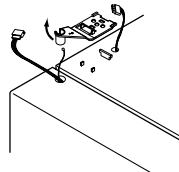
- 1 Unscrew top hinge cover with a screw driver.  
Insert a thin screw driver into the side groove of the cover to remove.



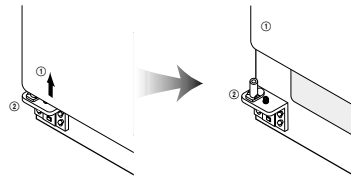
- 2 Turn top hinge fastener counterclockwise 3-4 times.  
Disconnect the harness wires.



- 3 Lift up the front of hinge to remove. ( After the hinge is removed the door can fall down forward. Be careful !)



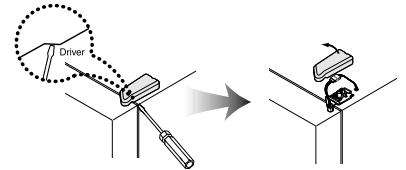
- 4 Lift the door straight up to remove.



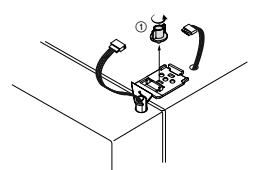
16

### Removing Refrigerator Door

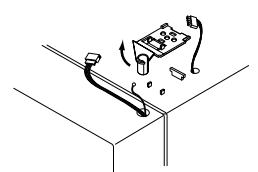
- 1 Unscrew top hinge cover with a screw driver.  
Insert a thin screw driver into the side groove of the cover to remove.



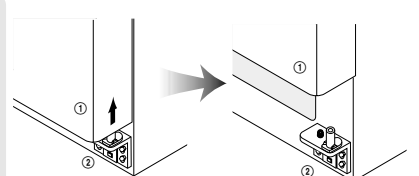
- 2 Turn top hinge fastener counterclockwise 3-4 times.  
Disconnect harness wires.



- 3 Lift up the front of hinge to remove. ( After the hinge is removed the door can fall down forward. Be careful !)



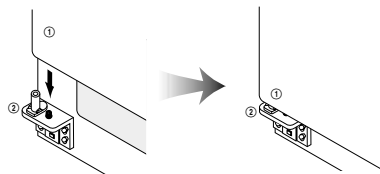
- 4 Lift the door straight up to remove.



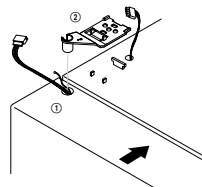
17

## Replacing Freezer Door

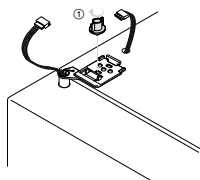
- 1 Insert the bottom hole of freezer door straight to the bottom hinge pin.



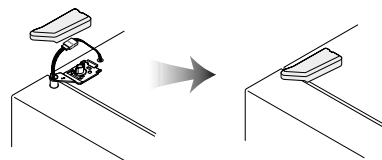
- 2 Let the top of door close to the cabinet and insert the top hinge pin to the top hole of freezer door.  
(Insert the back of hinge to the groove of protrusion first, then front to the top hole of door.)



- 3 Turn the hinge fastener tightly to the end. Connect harness wirings and screw ground wire.



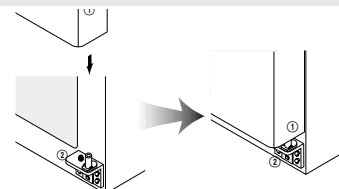
- 4 Click and screw the top hinge cover.



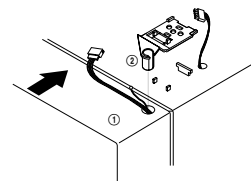
18

## Replacing Refrigerator Door

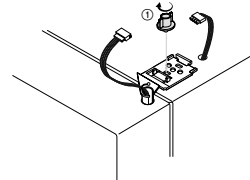
- 1 Insert the bottom hole of refrigerator door straight to the bottom hinge pin.



- 2 Let the top of door close to the cabinet and insert the top hinge pin to the top hole of freezer door.  
(Insert the back of hinge to the groove of protrusion first, then front to the top hole of door.)



- 3 Turn the hinge fastener tightly to the end. Connect harness wirings and screw ground wire.  
Click and screw the top hinge cover.



19

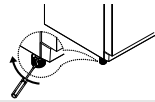


## Refrigerator Leveling & Door Adjustment ( If needed. )

Refrigerator must be level in order to maintain optimal performance and desirable front appearance.  
(If the floor beneath the refrigerator is uneven, freezer and refrigerator doors look unbalanced.)

### In case freezer door is lower than refrigerator door... ..

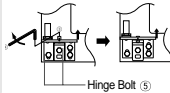
- 1 Insert a screw driver (flat tip) into a groove of the left wheel (bottom of freezer) and turn it clockwise until the door is balanced. (clockwise to raise freezer door ; counterclockwise to lower)  
※ Unless the freezer door is balanced by step 1, then follow the next steps.



- 2 Open the doors, unscrew the front cover and remove, if it is attached.



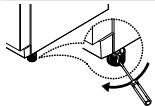
- 3 Loosen 3 hinge bolts(1 on the left + 2 on the right) a little. (Do not unfasten them completely.) Insert a hexagonal wrench into the groove of adjusting nut and turn clockwise until the door is level.



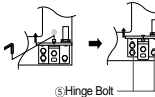
- 4 Once the door is balanced, fasten the hinge bolts tightly and screw the front cover.

### In case refrigerator door is lower than freezer door... ..

- 1 Insert a screw driver (flat tip) into a groove of the right wheel (bottom of refrigerator) and turn it clockwise until the door is balanced. (clockwise to raise refrigerator door ; counterclockwise to lower)  
※ Unless the refrigerator door is balanced by step 1, then follow the next steps.



- 2 Loosen 3 hinge bolts(2 on the left + 1 on the right) a little. (Do not unfasten them completely.) Insert a hexagonal wrench into the groove of adjusting nut and turn clockwise until the door is level.



- 3 Once the door is balanced, fasten the hinge bolts tightly.

## Front Cover

After installation and/or door leveling, fasten front cover with screws.(Remove the screws on the front bottom panel first.  
Click and screw the cover)



### Notice

• The front of refrigerator needs to be higher just a little than the back for easy door closing, but if the wheel is raised too much for door balance, i.e. front of refrigerator is too higher than the back, it can be difficult to open the door.

## USER GUIDE

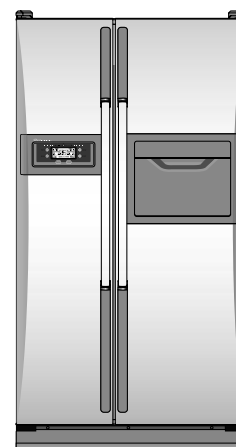


**CFC-Free**

- FRS-3031IAL
- FRS-3031WAL
- FRS-3031EAL
- FRS-3031CAL

### CONTENTS

Be sure to keep for safety .....	1~3
Installation Guide .....	4
Control Panel .....	5
Temperature Control .....	6
How to use interior Parts .....	7~9
Care & Cleaning .....	10~11
How To change Interior Light Bulb ...	12
Before You Call for Service....	13
Something strange? Don't worry. Here is the answer.....	14
Installation Preparation .....	15
If the refrigerator can not enter the door, follow these steps .....	16~19
Refrigerator Leveling & Door Adjustment(if needed.) .....	20



Read this user guide thoroughly and carefully before using  
for your safety and optimal performance of refrigerator.

Code: S201-17

Side by Side **Refrigerator**